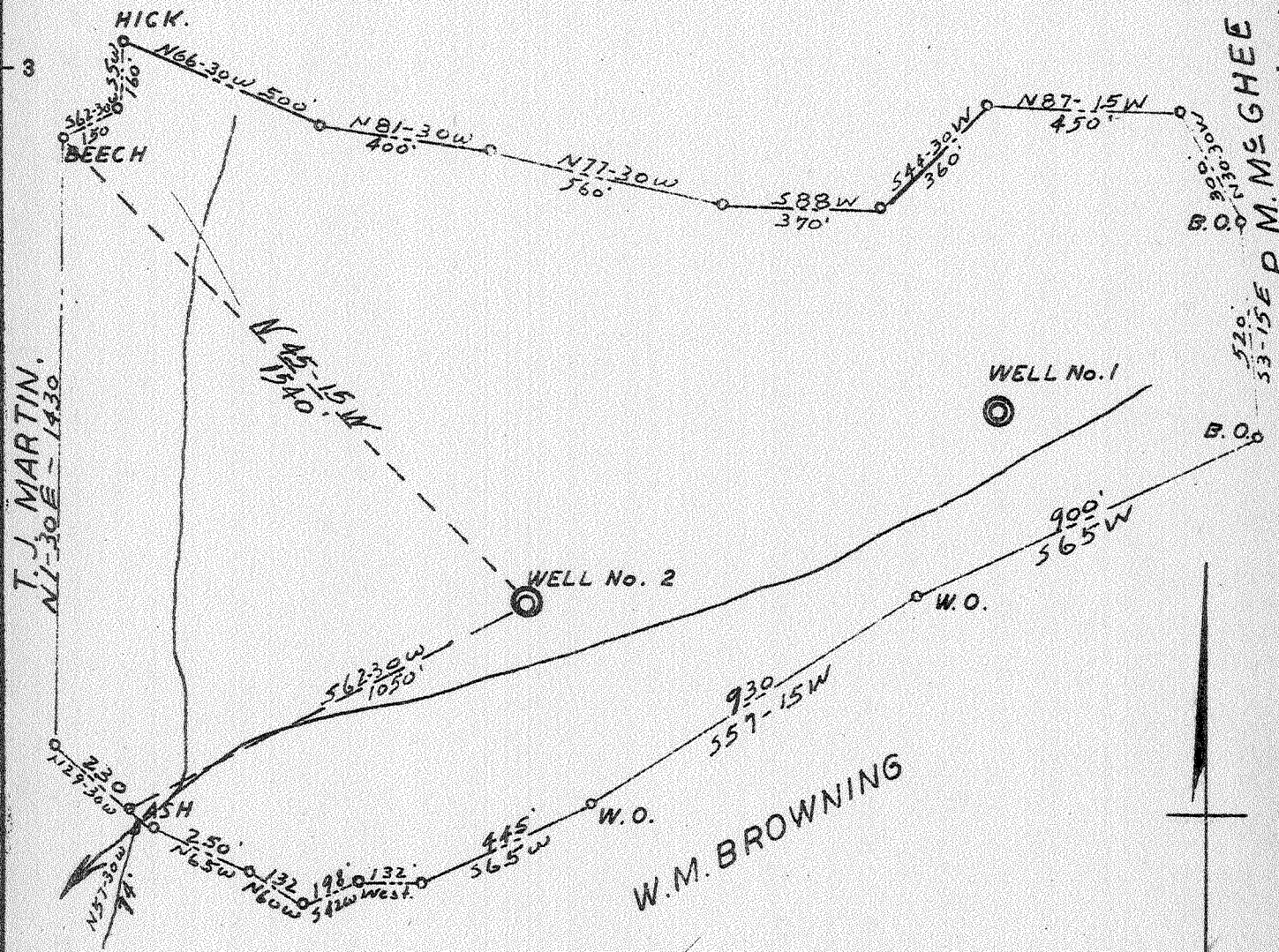


Latitude 38 20

Longitude 82 00

H.L. STICKLER



New Location
 Drill Deeper
 Abandonment

JUL 27 1942

4.52 W
 2.01

Company SOVEREIGN GAS CO.
 Address BOX 424 HUNTINGTON, W.VA.
 Farm WM. BROWNING
 Tract 1 Acres 75 Lease No. 1
 Well (Farm) No. 2 Serial No. _____
 Elevation (Spirit Level) 640
 Quadrangle MILTON
 County LINCOLN District CARROLL
 Engineer S. V. HAWORTH
 Engineer's Registration No. 224
 File No. _____ Drawing No. _____
 Date 7-1-42 Scale 1" = 500'

STATE OF WEST VIRGINIA
 DEPARTMENT OF MINES
 OIL AND GAS DIVISION
 CHARLESTON

WELL LOCATION MAP
 FILE NO. LIN-329A

+ Denotes location of well on United States Topographic Maps, scale 1 to 62,500, latitude and longitude lines being represented by border lines as shown.

- Denotes one inch spaces on border line of original tracing.

"IMPERIAL" TRACING CLOTH
 K & E CO., N. Y.

WM. BROWNING No. 2 - SOVEREIGN GAS CO. - LIN-329-A