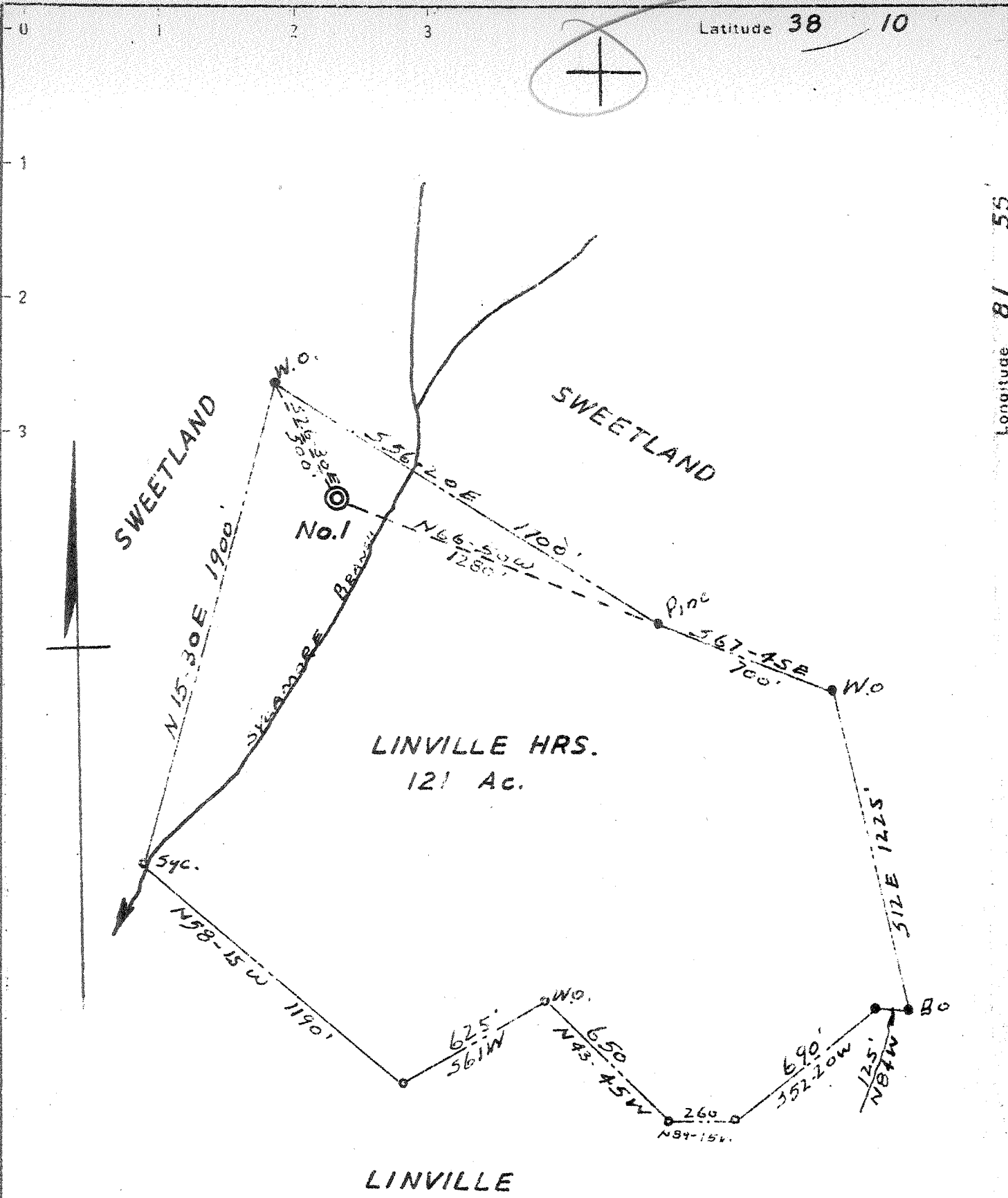
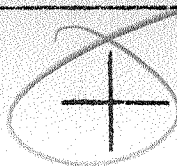


Latitude 38 10

Longitude 81 55



New Location

Drill Deeper

Abandonment

0.49 S  
3.09 W

Company CUMBERLAND GAS CORP.

Address CHARLESTON W. VA.

Farm HENRY LINVILLE HRS.

Tract 1 Acres 121 Lease No. 1

Well (Farm) No. 1 Serial No. 56

Elevation (Spirit Level) 860 (BAR)

Quadrangle MADISON

County LINCOLN District JEFFERSON

Engineer S.V. HAWORTH

Engineer's Registration No. 224

File No. \_\_\_\_\_ Drawing No. \_\_\_\_\_

Date AUG. 24-42 Scale 1" = 500'

STATE OF WEST VIRGINIA  
DEPARTMENT OF MINES  
OIL AND GAS DIVISION  
CHARLESTON

WELL LOCATION MAP  
FILE NO. LIN-347-A

+ Denotes location of well on United States Topographic Maps, scale 1 to 62,500, latitude and longitude lines being represented by border lines as shown.

- Denotes one inch spaces on border line of original tracing.