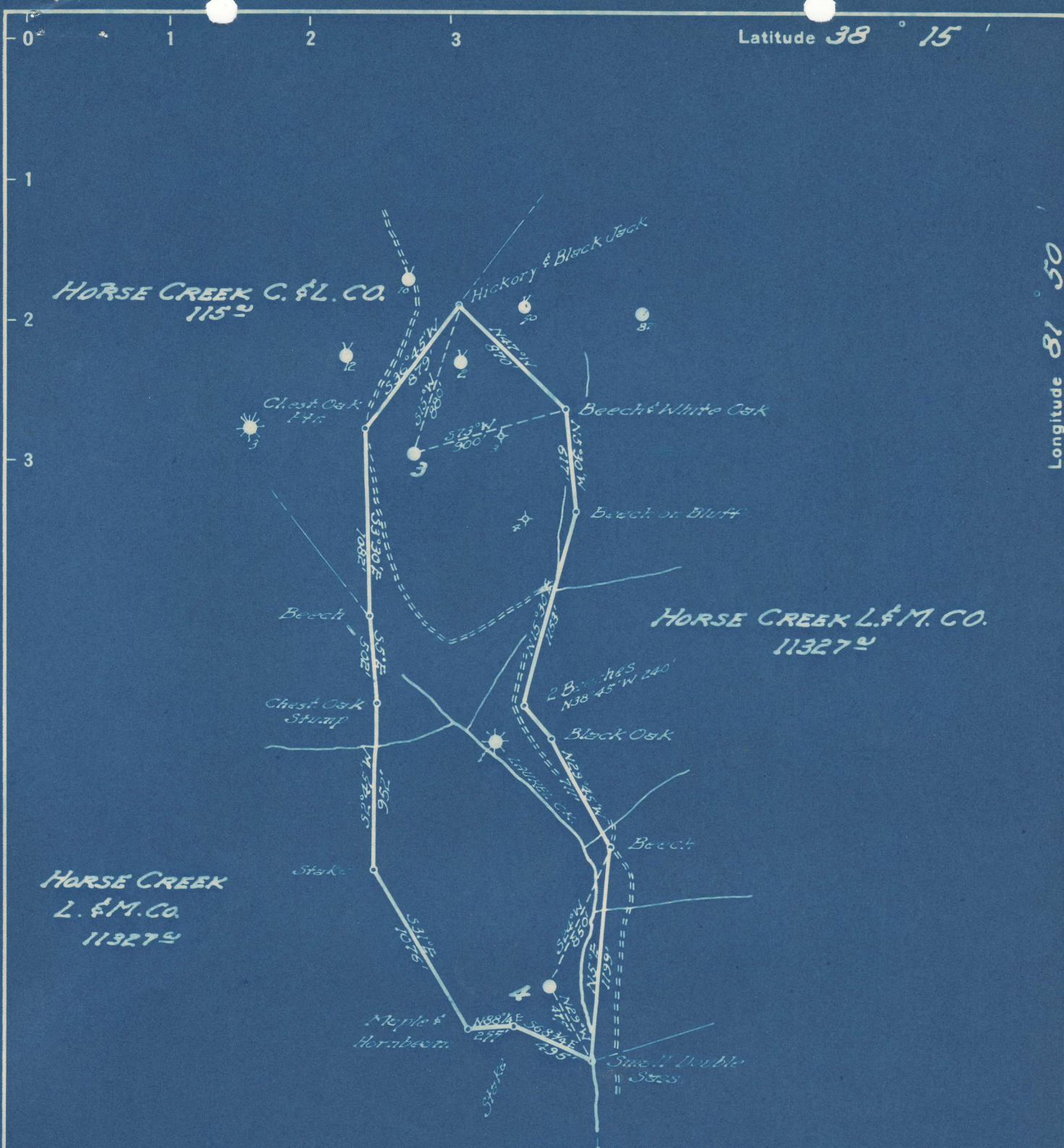


Latitude 38° 15'

Longitude 81° 50'



| | | |
|----|------|---|
| #3 | 3.02 | S |
| | 4.08 | W |
| #4 | 3.61 | S |
| | 3.90 | W |

New Location
 Drill Deeper
 Abandonment

Company UNITED FUEL GAS CO.
 Address CHARLESTON, W.VA.
 Farm A.C. PAULEY
 Tract _____ Acres 95 Lease No. 75072
 Well (Farm) No. 3, 4 Serial No. F2505
 Elevation (Spirit Level) 3-1200, 4-905
 Quadrangle MADISON
 County LINCOLN District DUVAL
 Engineer _____
 Engineer's Registration No. 662 **NC**
 File No. 464749 Drawing No. _____
 Date 3-8-49 Scale 1"=800'

STATE OF WEST VIRGINIA
 DEPARTMENT OF MINES
 OIL AND GAS DIVISION
 CHARLESTON

WELL LOCATION MAP

FILE NO. LIN-639-A-#3
LIN-640-A-#4

+ Denotes location of well on United States Topographic Maps, scale 1 to 62,500, latitude and longitude lines being represented by border lines as shown.
 - Denotes one inch spaces on border line of original tracing.

A. C. PAULEY NO. 4 WELL.

6400

Duval District, Lincoln County, W. Va.
 By United Fuel Gas Co., Box 1273, Charleston, 25, W. Va.
 Abandoned under permit Lin-.....-A?
 On 95 acres, on Laurel Creek.
 Elevation, 905' L.
 Minerals owned by Roscoe E. Pauley et al., Sod, W. Va.
 Drilling completed June 11, 1919.
 Shot June 12, 1919, at 2298-2314', with 40 qts.
 Oil, 2 bbls., 1st 24 hrs.
 5³/₁₆" casing, 1640'; 2" tubing, 2320'; all left in.
 Oil well. Record to Dept. of Mines March 10, 1949.
 Record to RCT from Mrs. Griffith September 27, 1949. Old File No. 1049.

| | Top. | Bottom. |
|----------------|------|---------|
| Salt Sand | 850 | 950 |
| Slate | 950 | 1050 |
| Salt Sand | 1050 | 1200 |
| Slate | 1200 | 1225 |
| Salt Sand | 1225 | 1450 |
| Red rock | 1450 | 1580 |
| Little Lime | 1580 | 1608 |
| Pencil Cave | 1608 | 1612 |
| Big Lime | 1612 | 1812 |
| Big Injun Sand | 1812 | 1862 |
| Slate | 1862 | 2277 |
| Brown shale | 2277 | 2297 |
| Berea Sand | 2297 | 2318 |
| Total depth | | 2320 |



STATE OF WEST VIRGINIA
DEPARTMENT OF MINES
OIL AND GAS DIVISION

1049

WELL RECORD
ABANDONMENT

Permit No. 640-A Oil or Gas Well Oil
(KIND)

Company United Fuel Gas Co.
Address P. O. Box 1273, Charleston 25, W. Va.
Farm A. C. Pauley Acres 95
Location (waters) Laurel Creek
Well No. 4 Elev. 905
District Duval County Lincoln
The surface of tract is owned in fee by _____
Address _____
Mineral rights are owned by Roscoe E. Pauley, et al
Sod, Address West Virginia
Drilling commenced Not Given
Drilling completed 6-11-19
Date Shot 6-12-19 From 2298 To 2314
With 40 Quarts
Open Flow _____ /10ths Water in _____ Inch
_____ /10ths Merc. in _____ Inch
Volume _____ Cu. Ft.
Rock Pressure _____ lbs. _____ hrs.
Oil 2 _____ bbls., 1st 24 hrs.
Fresh water _____ feet _____ feet
Salt water _____ feet _____ feet

| Casing and Tubing | Used in Drilling | Left in Well | Packers |
|-------------------|------------------|--------------|----------------------|
| Size | | | |
| 16 | | | Kind of Packer _____ |
| 13 | | | |
| 10 | | | Size of _____ |
| 8 1/4 | | | |
| 6 5/8 | | | Depth set _____ |
| 5 3/16 | 1640 | 1640 | |
| 3 | | | Perf. top _____ |
| 2 Tubing | | 2320 | Perf. bottom _____ |
| Liners Used | | | Perf. top _____ |
| | | | Perf. bottom _____ |

CASING CEMENTED _____ SIZE _____ No. Ft. _____ Date _____
COAL WAS ENCOUNTERED AT _____ FEET _____ INCHES
_____ FEET _____ INCHES _____ FEET _____ INCHES
_____ FEET _____ INCHES _____ FEET _____ INCHES

| Formation | Color | Hard or Soft | Top | Bottom | Oil, Gas or Water | Depth Found | Remarks |
|-------------|-------|--------------|------|--------|-------------------|-------------|---------|
| Salt Sand | | | 850 | 950 | | | |
| Slate | | | 950 | 1050 | | | |
| Salt Sand | | | 1050 | 1200 | | | |
| Slate | | | 1200 | 1225 | | | |
| Salt Sand | | | 1225 | 1450 | | | |
| Red Rock | | | 1450 | 1580 | | | |
| Little Lime | | | 1580 | 1608 | | | |
| Pencil Cave | | | 1608 | 1612 | | | |
| Big Lime | | | 1612 | 1812 | | | |
| Big Injun | | | 1812 | 1862 | | | |
| Slate | | | 1862 | 2277 | | | |
| Brown Shale | | | 2277 | 2297 | | | |
| Berea | | | 2297 | 2318 | | | |
| Total Depth | | | | 2320' | | | |

