

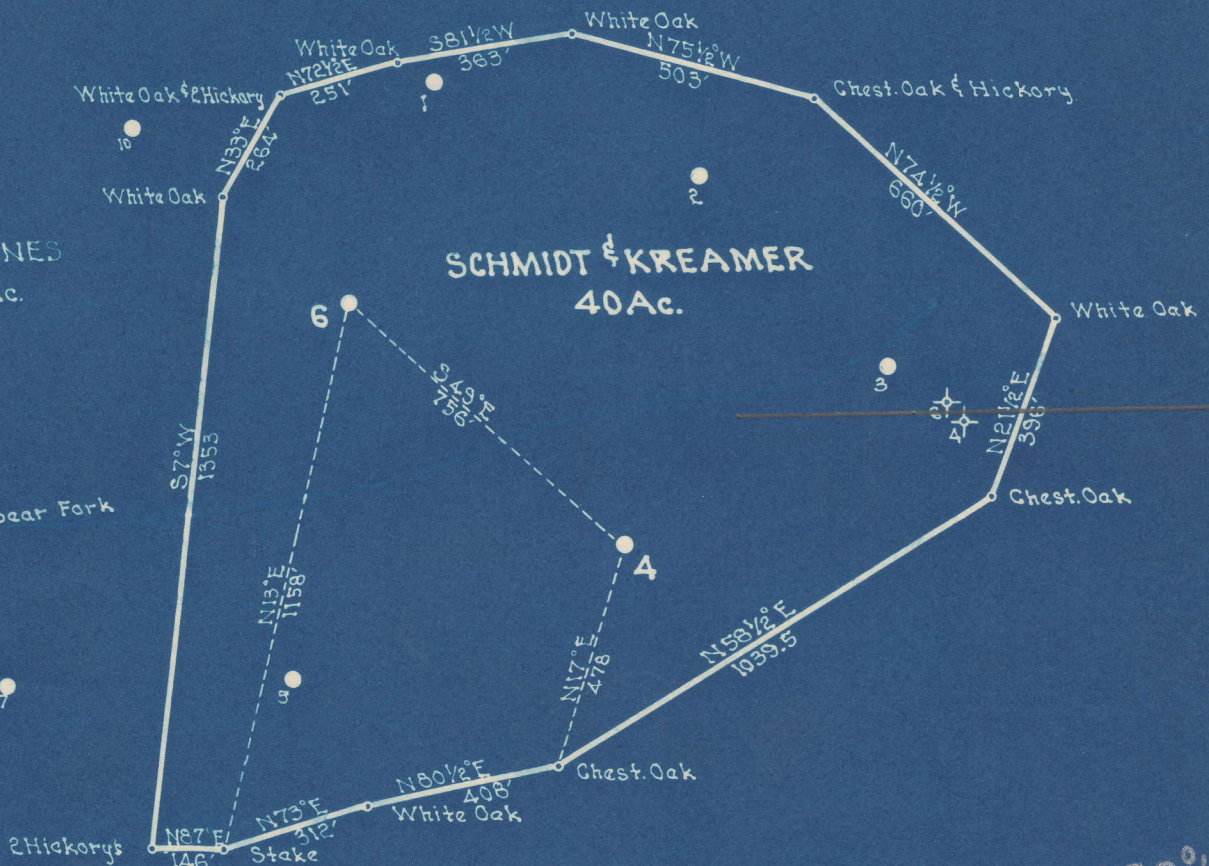
Latitude 38° 20'

Longitude 81° 55'

B. F. CURNES  
108 Ac.

SCHMIDT & KREAMER  
40 Ac.

Branch of Bear Fork



#4 | 0.06 S of 38°15'  
1.59 W
#6
1.68 W

- New Location
- Drill Deeper
- Abandonment

Company UNITED FUEL GAS CO.  
 Address CHARLESTON, W.VA.  
 Farm SCHMIDT & KREAMER  
 Tract Acres 40 Lease No. 71130  
 Well (Farm) No. 466 Serial No. F-9711  
 Elevation (Spirit Level) 4-959.9, 6-826.  
 Quadrangle SAINT ALBANS  
 County LINCOLN District DUVAL  
 Engineer W. Moore  
 Engineer's Registration No. 662  
 File No. 44-51 Drawing No. \_\_\_\_\_  
 Date 8-24-49 Scale 1"=400'

STATE OF WEST VIRGINIA  
 DEPARTMENT OF MINES  
 OIL AND GAS DIVISION  
 CHARLESTON

*MODISON #4*

WELL LOCATION MAP  
 FILE NO. LIN-700-A-#4  
LIN-701-A-#6

+ Denotes location of well on United States Topographic Maps, scale 1 to 62,500, latitude and longitude lines being represented by border lines as shown.

- Denotes one inch spaces on border line of original tracing.



SCHMIDT & KREMER NO. 6 WELL.

701A

Duval District, Lincoln County, W. Va.  
By United Fuel Gas Co., Box 1273, Charleston, W. Va.  
Abandoned under permit Lin-.....-A?  
On.....acres.  
Elevation, .....' L.  
Drilling commenced Oct. 28, 1915; completed Nov. 30, 1915.  
Shot Dec. 1, 1915, with 80 qts.  
6 $\frac{5}{8}$ " casing, 1640'; 5 $\frac{3}{16}$ " 1628'; all left in.  
O.W.S. packer, Hook wall, 5 $\frac{3}{16}$  x 6 $\frac{5}{8}$  x 10, set at 1628', 1-8-1936.  
Oil well. Record to Dept. of Mines stamped Apr. 18, 1949.  
Record to RCT from Mrs. Griffith July 10, 1949. Old File No. 925.

	Top.	Bottom.
Salt Sand	960	- 1597
Little Lime	1597	- 1627
Pencil Cave	1627	- 1633
Big Lime	1633	- 1813
Big Injun Sand	1813	- 1875
Brown shale	2287	- 2307
Berea Sand	2307	- 2327
Total depth		2327





Camp No Inspection

975

STATE OF WEST VIRGINIA DEPARTMENT OF MINES OIL AND GAS DIVISION

WELL RECORD

Permit No. 701-A

Oil or Gas Well (KIND)

Company United Fuel Gas Company
Address P. O. Box 1273 - Charleston, W. Va.
Farm Schmidt & Kromer Acres
Location (waters)
Well No. 6 Elev.
District Marshall County Lincoln
The surface of tract is owned in fee by
Mineral rights are owned by
Drilling commenced October 20, 1915
Drilling completed November 30, 1915
Date Shot 12/1/1915 From To
With 80 qts.
Open Flow /10ths Water in Inch
/10ths Merc. in Inch
Volume Cu. Ft.
Rock Pressure lbs. hrs.
Oil bbls., 1st 24 hrs.
Fresh water feet feet
Salt water feet feet

Table with columns: Casing and Tubing, Used in Drilling, Left in Well, Packers. Includes rows for sizes 16, 13, 10, 8 1/4, 6 5/8, 5 3/16, 3, 2 and packer types.

Table with columns: CASING CEMENTED, SIZE, No. Ft., Date. Includes rows for COAL WAS ENCOUNTERED AT with measurements in feet and inches.

Table with columns: Formation, Color, Hard or Soft, Top, Bottom, Oil, Gas or Water, Depth Found, Remarks. Lists geological formations like Salt Sand, Little Lime, Pencil Cave, Big Lime, Big Injan, Brown Shale, Berea Sand.

PACKER RECORD
O.W.S. Rock Wall 5-3/16" x 6-5/8" x 10" set at 1625' 1/8/1936

