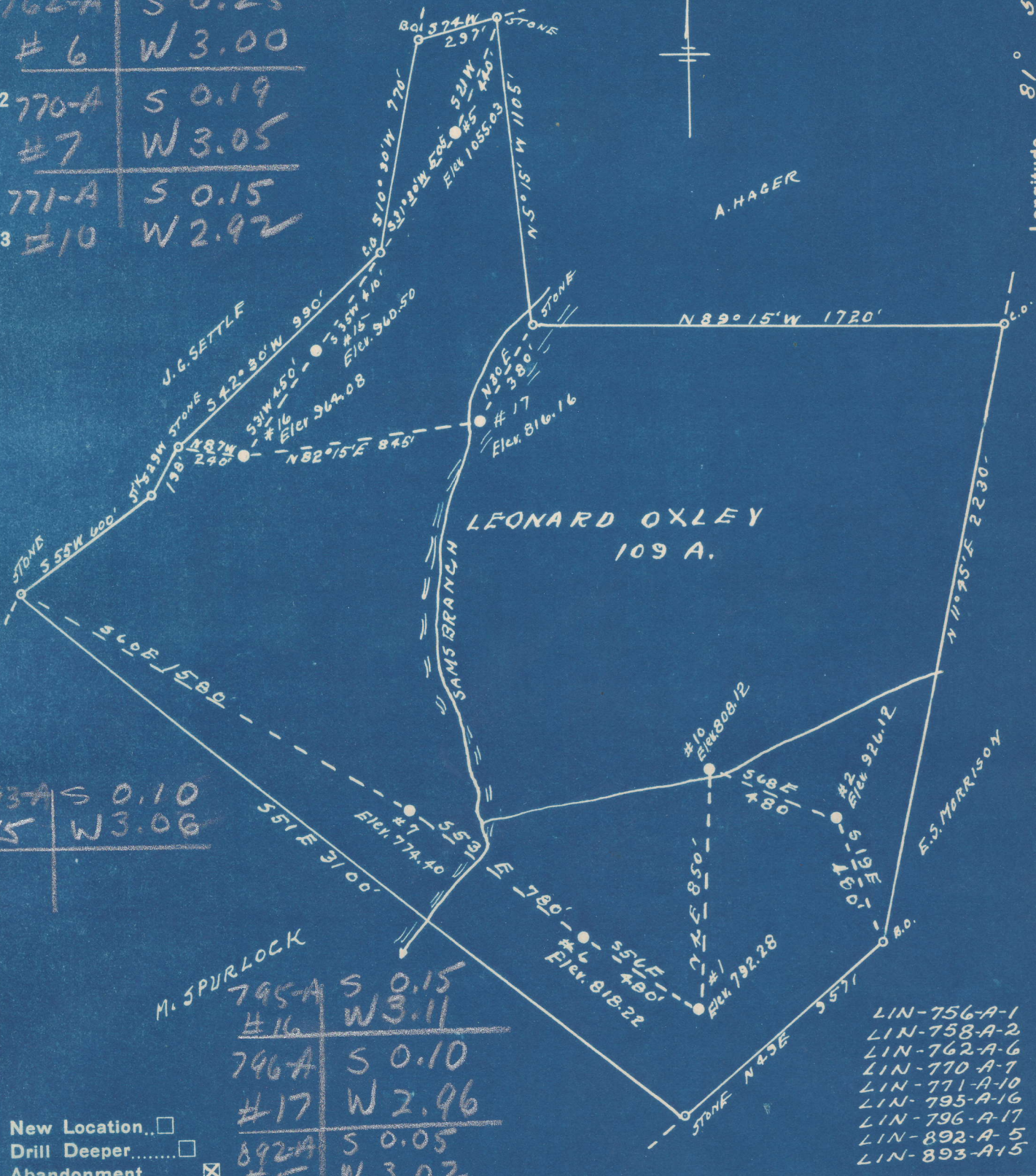


Latitude 38° 15'

Longitude 81° 55'

0	1	2	3
756-A	S 0.29		
#1	W 2.96		
758-A	S 0.18		
1 #2	W 2.87		
762-A	S 0.25		
#6	W 3.00		
2 770-A	S 0.19		
#7	W 3.05		
771-A	S 0.15		
3 #10	W 2.92		



893-A	S 0.10
#15	W 3.06

795-A	S 0.15
#16	W 3.11
796-A	S 0.10
#17	W 2.96
892-A	S 0.05
#5	W 3.02

New Location...
 Drill Deeper...
 Abandonment...

- LIN-756-A-1
- LIN-758-A-2
- LIN-762-A-6
- LIN-770-A-7
- LIN-771-A-10
- LIN-795-A-16
- LIN-796-A-17
- LIN-892-A-5
- LIN-893-A-15

Company G. S. H. SUPPLY CO.
 Address TULSA, OKLA.
 Farm LEONARD OXLEY
 Tract _____ Acres 100 Lease No. _____
 Well (Farm) No. 910-15-16-17 Serial No. _____
 Elevation (Spirit Level) SEE ABOVE
 Quadrangle MADISON
 County LINCOLN District DUVAL
 Engineer L. F. Dye
 Engineer's Registration No. 804 **NW**
 File No. _____ Drawing No. _____
 Date 3-31-49 Scale 1" = 500'

STATE OF WEST VIRGINIA
 DEPARTMENT OF MINES
 OIL AND GAS DIVISION
 CHARLESTON

WELL LOCATION MAP
 FILE NO. _____

+ Denotes location of well on United States Topographic Maps, scale 1 to 62,500, latitude and longitude lines being represented by border lines as shown.

- Denotes one inch spaces on border line of original tracing.

Duval District, Lincoln County, W. Va.
Big Creek Oil & Dev. Co.
3/4 mile northwest of Yawkey.
Elevation, 945'.

758A

	Top.	Bottom.	Thickness.
Surface	0	- 11	11
Red rock	11	- 30	19
Sand	30	- 75	45
Shells and slate	75	- 180	105
Sand	180	- 240	60
Sand, shells, and slate	240	- 325	85
Sand	325	- 420	95
Slate	420	- 450	30
Sand	450	- 490	40
Slate	490	- 515	25
Sand	515	- 560	45
Slate	560	- 575	15
Sand	575	- 610	35
Slate	610	- 615	5
Sand	615	- 680	65
Slate	680	- 830	150
Sand	830	- 845	15
Slate	845	- 860	15
Sand	860	- 870	10
Slate	870	- 900	30
Sand	900	- 915	15
Slate	915	- 980	65
Sand	980	- 995	15
Slate	995	- 1030	35
Lime	1030	- 1045	15
Slate	1045	- 1070	25
Salt Sand (some water, 1100'; hole full/	1070	- 1665	595
Black lime	1665	- 1707	42
Pencil Cave	1707	- 1710	3
Big Lime	1710	- 1860	150
Big Injun Sand	1860	- 1928	68
Berea shale	1928	- 2409	481
Berea Sand (oil)	2409	- 2432	23



STATE OF WEST VIRGINIA
DEPARTMENT OF MINES
OIL AND GAS DIVISION

917

WELL RECORD

Permit No. 758-A or Plat 756-A Oil or Gas Well X (KIND)

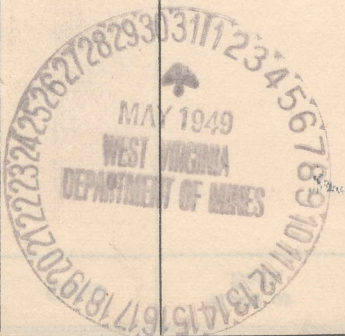
Company G.S.-H. SUPPLY CO.
Address Box 895, Tulsa, Okla.
Farm L. Oxley Acres 100
Location (waters) _____
Well No. 2 Elev. 926.12
District Duval County Lincoln
The surface of tract is owned in fee by _____
Address _____
Mineral rights are owned by _____
Address _____

Drilling commenced _____
Drilling completed _____
Date Shot 10-20-09 From _____ To _____
With 90 qts.
Open Flow /10ths Water in _____ Inch
/10ths Merc. in _____ Inch
Volume _____ Cu. Ft.
Rock Pressure _____ lbs. _____ hrs.
Oil _____ bbls., 1st 24 hrs.
Fresh water _____ feet _____ feet
Salt water _____ feet _____ feet

Casing and Tubing	Used in Drilling	Left in Well	Packers
Size			
16			Kind of Packer
13			
10			Size of
8 1/4			
6 5/8		1720	Depth set
5 3/16		1764	
3			Perf. top
2		2426	Perf. bottom
Liners Used			Perf. top
			Perf. bottom

CASING CEMENTED _____ SIZE _____ No. Ft. _____ Date _____
COAL WAS ENCOUNTERED AT _____ FEET _____ INCHES
_____ FEET _____ INCHES FEET _____ INCHES
_____ FEET _____ INCHES FEET _____ INCHES

Formation	Color	Hard or Soft	Top	Bottom	Oil, Gas or Water	Depth Found	Remarks
Salt sand			1070	1665			
Little lime			1665	1707			
Pencil cave			1707	1710			
Big lime			1710	1860			
Big Injun			1860	1928			
Berea			2409	2432			



JUL 10 1949