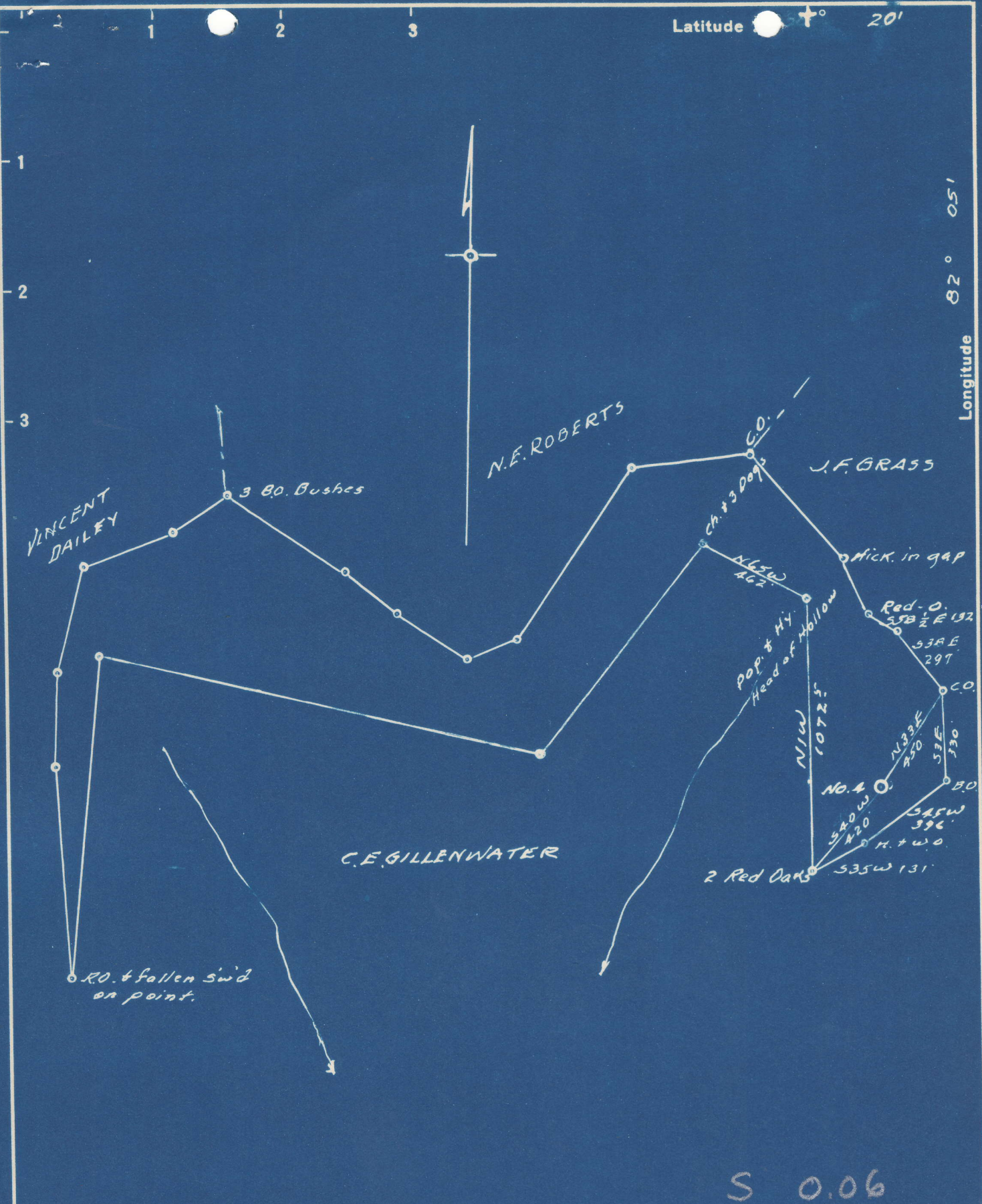


Latitude  $36^{\circ} 20'$

Longitude  $82^{\circ} 05'$



S 0.06  
W 1.28

New Location   
 Drill Deeper   
 Abandonment

Company G.L. MEABON  
 Address HUNTINGTON, WV, VA.  
 Farm C.E. GILLENWATER  
 Tract \_\_\_\_\_ Acres 38 Lease No. \_\_\_\_\_  
 Well (Farm) No. 4 Serial No. \_\_\_\_\_  
 Elevation (Spirit Level) 1125  
 Quadrangle MILTON  
 County LINCOLN District CARROLL  
 Engineer Basil S. Burgess  
 Engineer's Registration No. 469  
 File No. \_\_\_\_\_ Drawing No. \_\_\_\_\_  
 Date 9-28-50 Scale 1" = 500'

STATE OF WEST VIRGINIA  
 DEPARTMENT OF MINES  
 OIL AND GAS DIVISION  
 CHARLESTON

**WELL LOCATION MAP**  
 FILE NO. LIN-930-A

+ Denotes location of well on United States Topographic Maps, scale 1 to 62,500, latitude and longitude lines being represented by border lines as shown.

- Denotes one inch spaces on border line of original tracing.





1150

STATE OF WEST VIRGINIA  
DEPARTMENT OF MINES  
OIL AND GAS DIVISION

WELL RECORD

Permit No. Ab R m - 930 - 82

Oil or Gas Well Oil  
(KIND)

Company G.L. Meabon  
 Address Huntington, W. Va.  
 Farm C. E. Gillenwater Acres 38  
 Location (waters) Mud River  
 Well No. 4 Elev. 1125  
 District Carroll County Lincoln  
 The surface of tract is owned in fee by John Ashworth  
 Address Hamlin  
 Mineral rights are owned by C.E. Gillenwater  
 Address Hamlin, W. Va.  
 Drilling commenced Not Known  
 Drilling completed Not Known  
 Date Shot From To  
 With With one hundred lbs. Gelatin  
 Open Flow /10ths Water in Inch  
 /10ths Merc. in Inch  
 Volume Cu. Ft.  
 Rock Pressure lbs. hrs.  
 Oil 2 bbls., 1st 24 hrs.  
 Fresh water feet feet  
 Salt water feet feet

Casing and Tubing	Used in Drilling	Left in Well	Packers
Size			Kind of Packer
16			
13			
10			Size of
8 1/4			
6 1/2	865	865	Depth set
5 3/16			
3			Perf. top
2	1040	1040	Perf. bottom
Liners Used			Perf. top
			Perf. bottom

CASING CEMENTED SIZE No. Ft. Date  
 COAL WAS ENCOUNTERED AT FEET INCHES  
 FEET INCHES FEET INCHES  
 FEET INCHES FEET INCHES

Formation	Color	Hard or Soft	Top	Bottom	Oil, Gas or Water	Depth Found	Remarks
Sand			00	40			
Bl Slate			40	60			
Slate			60	170			
Sand			170	200			
Slate			200	225			
Sand			225	235			
Slate			235	450			
Sand			450	480			
Slate			480	515			
Sand			515	575			
Slate and Shell			575	626			
Sand			626	648			
Slate			648	652			
Sand			652	730			
Slate			730	755			
Sand			755	775			
Slate			775	820			
Sand			820	882			
Slate			882	925			
Sand			925	945			
Lime			945	980			
Slate			980	990			
Sand			990	995			
Slate			995	1027			
Salt Sand			1027	1048			
Total			1048				

