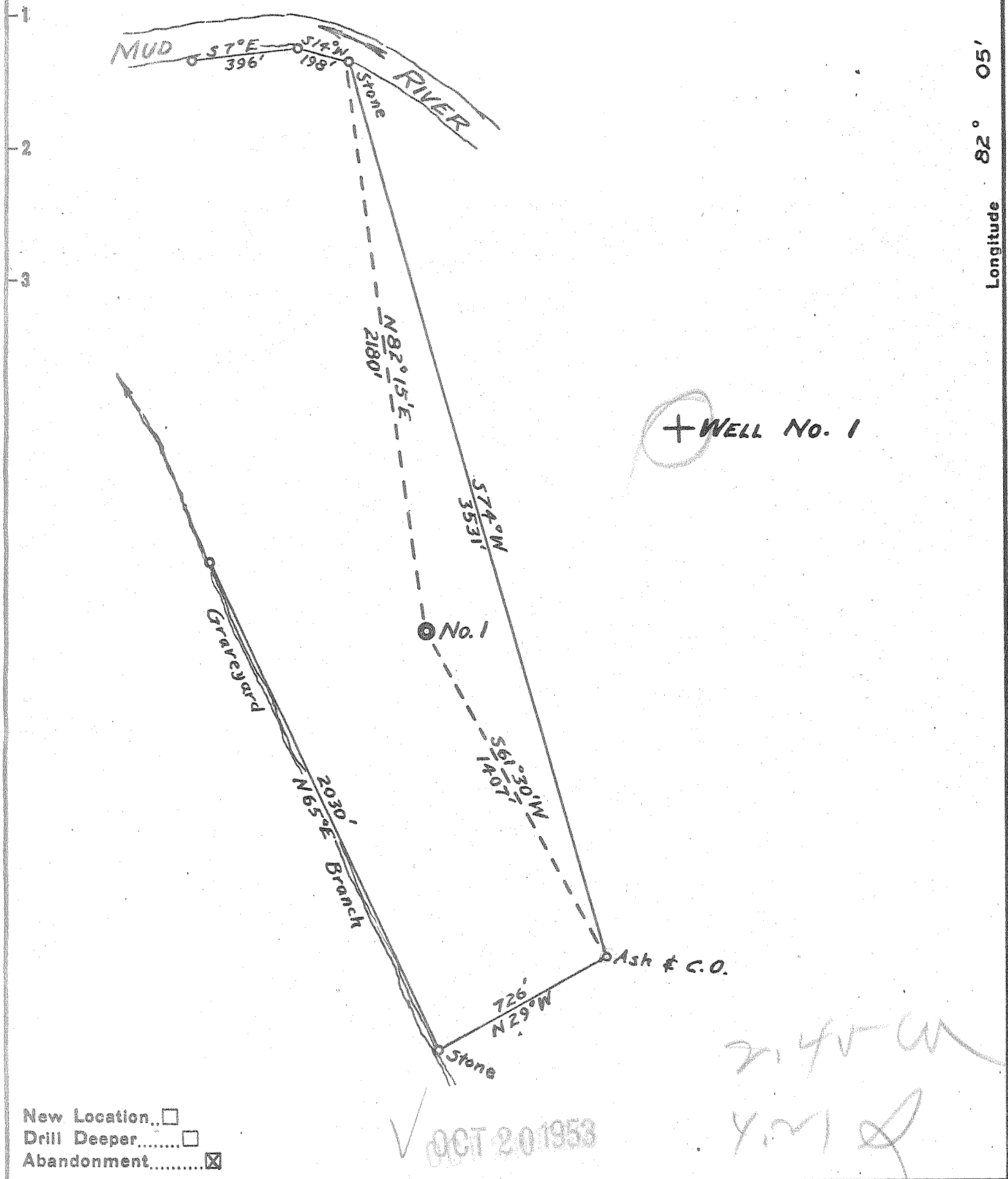


Latitude 38° 20'

Longitude 82° 05'



New Location...

Drill Deeper.....

Abandonment.....

Company W.C. KINGERY & G.H. SUMMERSON

Address HAMLIN, W. VA.

Farm HENRY R. LUCAS

Tract _____ Acres 64 Lease No. _____

Well (Farm) No. 1 Serial No. _____

Elevation (Spirit Level) 830

Quadrangle MILTON

County LINCOLN District CARROLL

Engineer F. M. Chambers

Engineer's Registration No. 771

File No. WJG-25 Drawing No. _____

Date 9-21-53 Scale 1" = 500'

STATE OF WEST VIRGINIA
DEPARTMENT OF MINES
OIL AND GAS DIVISION
CHARLESTON

WELL LOCATION MAP
FILE NO. LIN-1095-A

+ Denotes location of well on United States Topographic Maps, scale 1 to 62,500, latitude and longitude lines being represented by border lines as shown.

- Denotes one inch spaces on border line of original tracing.

HENRY R. LUCAS No. 1 - KINGERY & SUMMERSON - LIN-1095-A