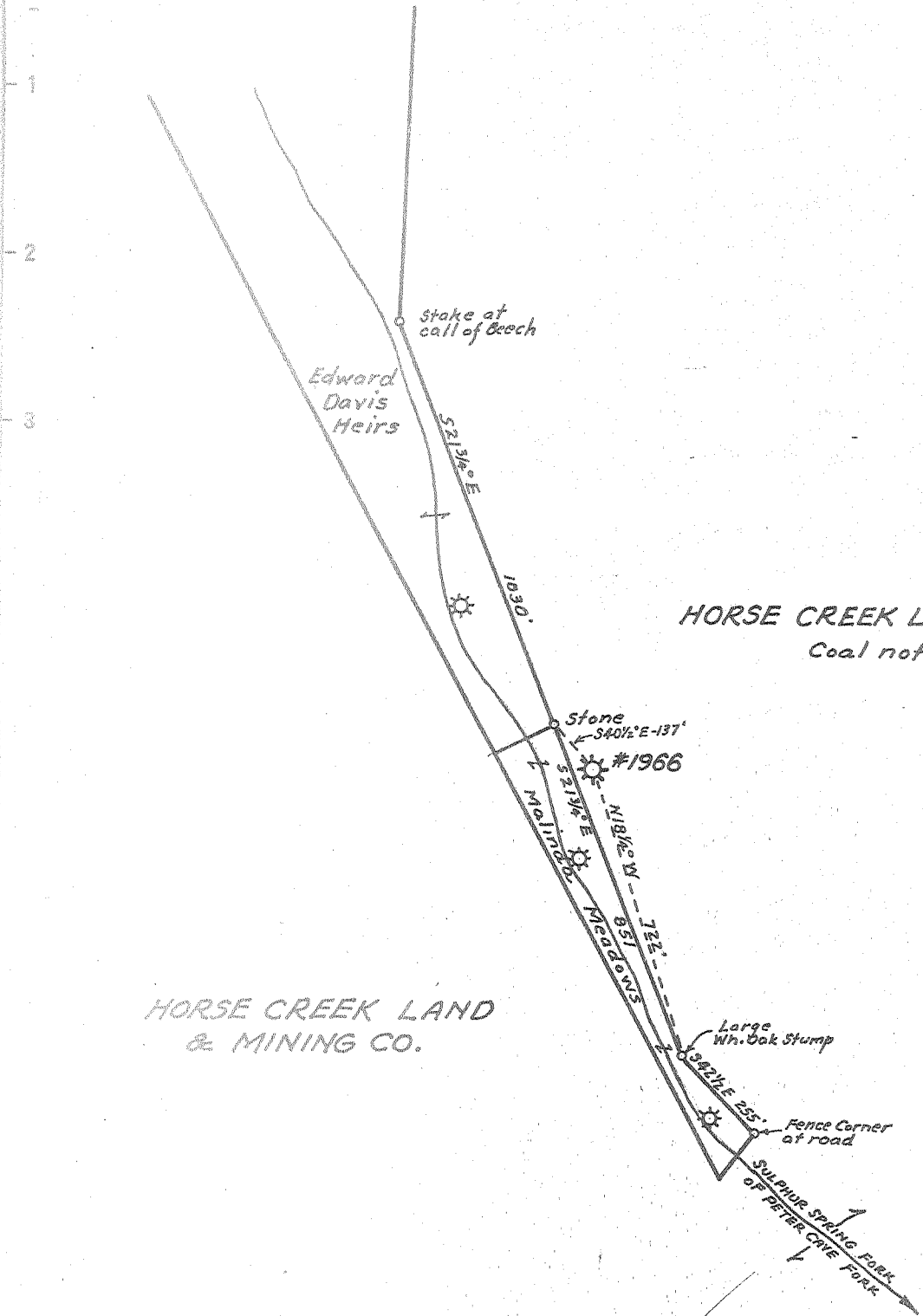


Latitude 38° 15'

Longitude 81° 55'



HORSE CREEK LAND & MINING CO.
Coal not operated.

HORSE CREEK LAND
& MINING CO.



New Location
 Drill Deeper
 Abandonment

~~OCT 3 1954~~
 OCT 6 1954

1.17 60
 5.57 80

Company	UNITED FUEL GAS CO.
Address	CHARLESTON, W.VA.
Farm	HORSE CREEK LAND & MINING CO.
Tract	Acres 11324 Lease No. 4976
Well (Farm) No.	10 Serial No. 1966
Elevation (Spirit Level)	875.3
Quadrangle	MADISON
County	LINCOLN District DUVAL
Engineer	Paul E. Joselino
Engineer's Registration No.	669
File No.	44-47 Drawing No.
Date	8-20-54 Scale 1"=400'

STATE OF WEST VIRGINIA
 DEPARTMENT OF MINES
 OIL AND GAS DIVISION
 CHARLESTON

WELL LOCATION MAP
 FILE NO. LIN-1109-A

+ Denotes location of well on United States Topographic Maps, scale 1 to 62,500, latitude and longitude lines being represented by border lines as shown.

- Denotes one inch spaces on border line of original tracing.

HORSE CREEK L. & M. Co. No. 10 (1966) - U. F. G. Co. - LIN-1109-A



STATE OF WEST VIRGINIA
DEPARTMENT OF MINES
OIL AND GAS DIVISION

1474

WELL RECORD

Oil or Gas Well Gas
(KIND)

Quadrangle Madison
Permit No. 1094
Company UNITED FUEL GAS CO.
Address P.O. Box 1273, Charleston 25, W. Va.
Farm Horse Creek Land & Mining Co. Acres 11,324
Location (waters) Sulphur Spring Fk. of Peter Cave Fk.
Well No. 1966 Elev. 875.3'
District Duval County Lincoln
The surface of tract is owned in fee by _____
Address _____
Mineral rights are owned by Horse Crk. Ld. & Mining Co.
1510 Kan. Valley Bldg. Address Charleston, W. Va.
Drilling commenced 8-6-28
Drilling completed 9-25-28
Date Shot _____ From _____ To _____
With _____

Casing and Tubing	Used in Drilling	Left in Well	Packers
Size			Kind of Packer
16			Anchor
13			Size of
10		469'	3x5-3/16x16
8 1/4		1622-4"	Depth set
6 5/8		2307-7"	1908'
5 3/16			Perf. top
3			Perf. bottom
2			Perf. top
Liners Used			Perf. bottom

Open Flow _____ /10ths Water in _____ Inch
8 /10ths Merc. in 2 Inch
Volume 440,000 Cu. Ft.
Rock Pressure 480# lbs. _____ hrs.
Oil _____ bbls., 1st 24 hrs.
Fresh water 70 feet 90 feet
Salt water 800 feet 830 feet

CASING CEMENTED _____ SIZE _____ No. Ft. _____ Date _____
COAL WAS ENCOUNTERED AT 20 FEET 24 INCHES
435 FEET 36 INCHES FEET INCHES
FEET INCHES FEET INCHES

Formation	Color	Hard or Soft	Top	Bottom	Oil, Gas or Water	Depth Found	Remarks
Surface			0	8	Water 70-90		
Sand			8	20	Water - Hole full 800-830		
Coal			20	22	Gas 14/10 W in 2" 2241'		
Slate			22	70			
Sand			70	100	Gas 6/10 Merc. in 2" 2247'		
Lime Shells			100	200			
Slate			200	235	Gas 8/10 Merc. in 2" 2252'		
Sand			235	295	Hole reduced 1662'		
Slate			295	435			
Coal			435	438			
Slate			438	495			
Lime Shells			495	620			
Sand			620	660			
Slate & Shells			660	770			
Salt Sand			770	930			
Slate & Shells			930	970	1662 Hole reduced		
Salt Sand			970	1080			
Lime			1080	1210			
Salt Sand			1210	1390			
Slate			1390	1395			
Pink Rock			1395	1400			
Lime			1400	1490			
Red Rock			1490	1496			
Slate & Shells			1496	1525			
Little Lime			1525	1555			
Pencil Cave			1555	1559			
Big Lime			1559	1747			
Red Injun			1747	1772			
Weir Shells			1772	1970			
Slate & Shells			1970	2221			
Brown Shale			2221	2240			
Berea Sand			2240	2265			
Slate & Lime			2265	2285			
Total depth			2285'				

RECEIVED
SEP 1954
WEST VIRGINIA
DEPT. OF MINES

JAN. 23 1958

