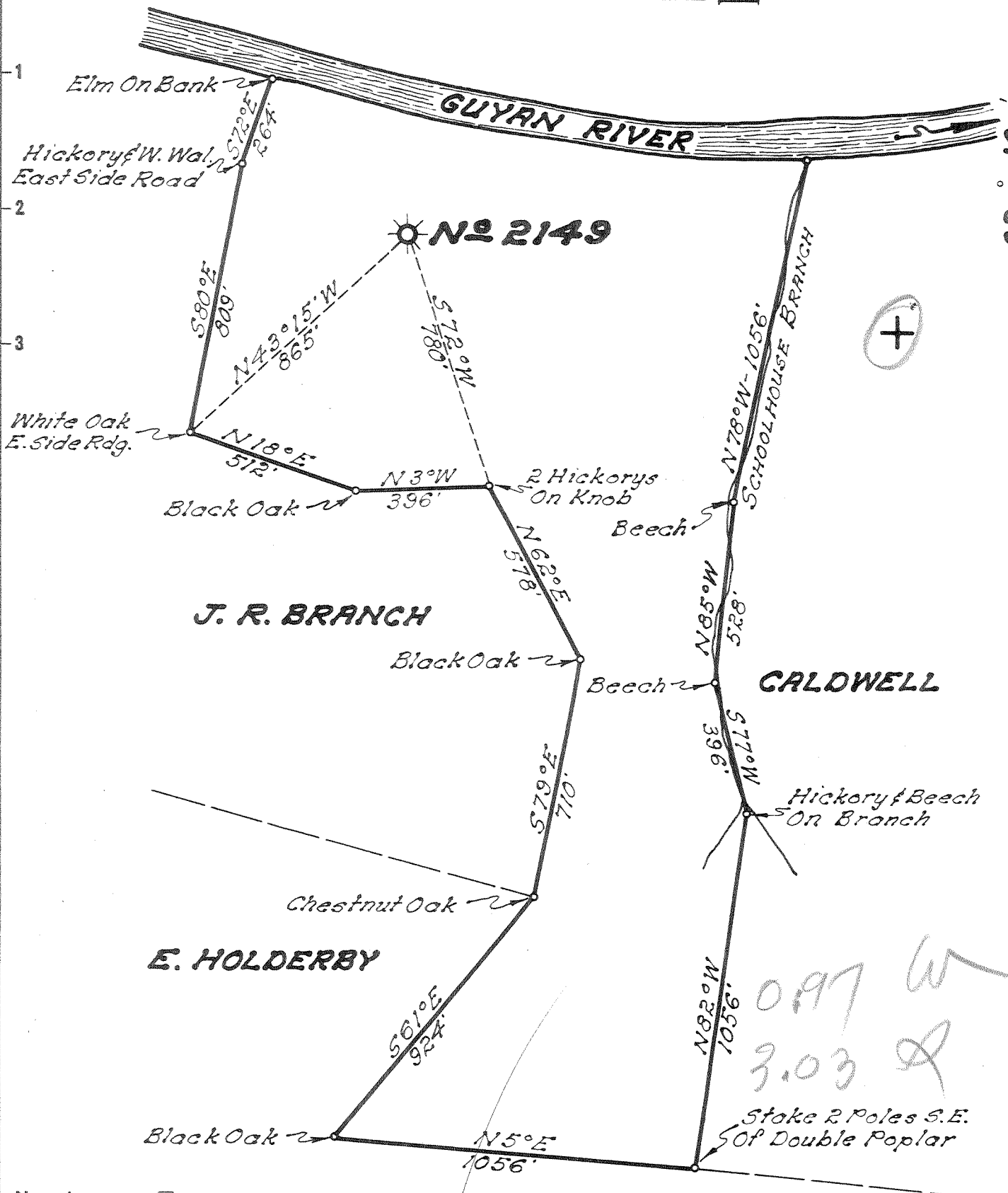


Latitude 38° 15'

Longitude 82° 10'



New Location...
 Drill Deeper...
 Abandonment...

DEC - 6 1954

Company UNITED FUEL GAS CO.
 Address CHARLESTON, W. VA.
 Farm J. R. BRANCH
 Tract _____ Acres 75 Lease No. 24622
 Well (Farm) No. 1 Serial No. 2149
 Elevation (Spirit Level) 614.64
 Quadrangle MIDKIFF
 County LINCOLN District SHERIDAN
 Engineer Seybert A. Howell
 Engineer's Registration No. 2529
 File No. 30-32-49 Drawing No. _____
 Date 11-15-54 Scale 1" = 400'

STATE OF WEST VIRGINIA
 DEPARTMENT OF MINES
 OIL AND GAS DIVISION
 CHARLESTON

WELL LOCATION MAP
 FILE NO. LIN-1121-A

+ Denotes location of well on United States Topographic Maps, scale 1 to 62,500, latitude and longitude lines being represented by border lines as shown.

- Denotes one inch spaces on border line of original tracing.

J. R. BRANCH No. 1 (2149) - U. F. G. Co.,

LIN-1121-A