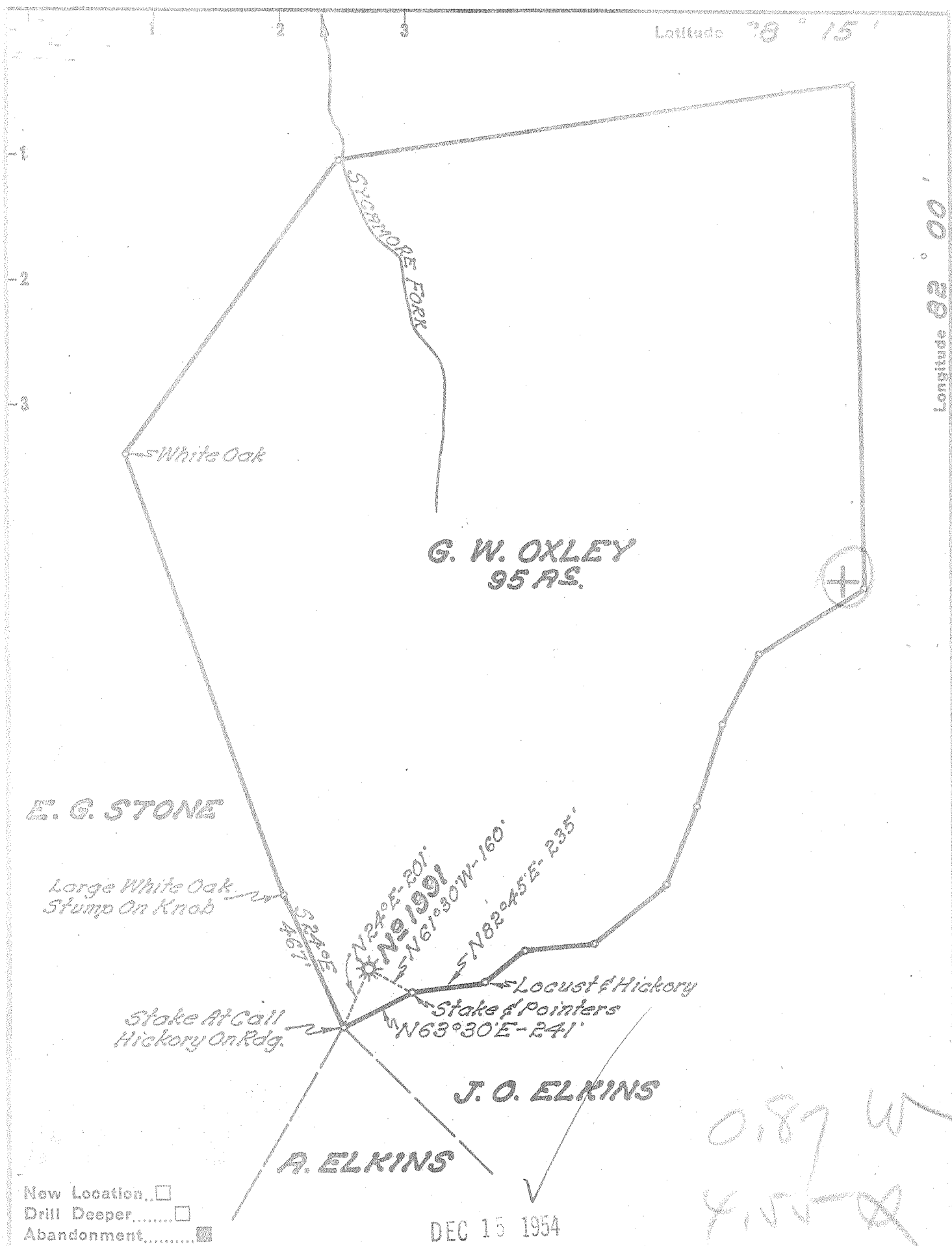


Latitude 38° 15'

Longitude 82° 00'



New Location
 Drill Deeper
 Abandonment

DEC 15 1954

0.87 W
 4.55

Company UNITED FUEL GAS CO.
 Address CHARLESTON, W. VA.
 Farm G. W. OXLEY
 Tract _____ Acres 95 Lease No. 24448
 Well (Farm) No. _____ Serial No. 1991
 Elevation (Spirit Level) 1145.0
 Quadrangle MIDKIFF
 County LINCOLN District UNION
 Engineer Seybert & Fentell
 Engineer's Registration No. 2529
 File No. 40-47 Drawing No. _____
 Date 11-12-54 Scale 1"=400'

STATE OF WEST VIRGINIA
 DEPARTMENT OF MINES
 OIL AND GAS DIVISION
 CHARLESTON

WELL LOCATION MAP
 FILE NO. LIN-1131-R

+ Denotes location of well on United States Topographic Maps, scale 1 to 62,500, latitude and longitude lines being represented by border lines as shown.

- Denotes one inch spaces on border line of original tracing.



STATE OF WEST VIRGINIA
DEPARTMENT OF MINES
OIL AND GAS DIVISION

1394

Quadrangle Midkiff

WELL RECORD

Permit No. 11754

Oil or Gas Well Gas
(KIND)

Company United Fuel Gas Co.
Address P. O. Box 1273, Charleston 25, W. Va.
Farm G. W. Oxley Acres 95
Location (waters) Sycamore Fork
Well No. 1991 Elev. 1145'
District Union County Lincoln
The surface of tract is owned in fee by _____
Address _____
Mineral rights are owned by Bertha Stone, et al
Address Bernie, W. Va.
Drilling commenced 12-5-28
Drilling completed 1-7-29
Date Shot 1-9-29 From _____ To _____
With 40 ots.
Open Flow 9 /10ths Water in 2 Inch
_____ /10ths Merc. in _____ Inch
Volume 143,040 Cu. Ft.
Rock Pressure 465 lbs. 48 hrs.
Oil _____ bbls., 1st 24 hrs.
Fresh water _____ feet _____ feet
Salt water _____ feet _____ feet

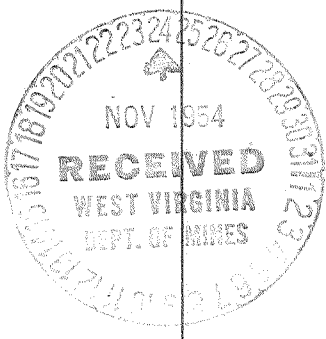
Casing and Tubing	Used in Drilling	Left in Well	Packers
Size			Kind of Packer
16			<u>Anchor</u>
13			Size of
10		<u>18' 7"</u>	<u>3" x 6-5/8"</u>
8 1/4	<u>286'</u>		Depth set
6 5/8		<u>1885'</u>	<u>2206'</u>
5 3/16		<u>2640'</u>	Perf. top
3			Perf. bottom
2			Perf. top
Liners Used			Perf. bottom

CASING CEMENTED _____ SIZE _____ No. Ft. _____ Date _____

COAL WAS ENCOUNTERED AT 407 FEET 36 INCHES
_____ FEET _____ INCHES _____ FEET _____ INCHES
_____ FEET _____ INCHES _____ FEET _____ INCHES

Formation	Color	Hard or Soft	Top	Bottom	Oil, Gas or Water	Depth Found	Remarks
Surface				15			
Sand & Slate			15	407			
Coal			407	410			
Sand & Slate			410	1125			
Salt Sand			1125	1360			
Sand & Slate			1360	1685			
Maxon Sand			1685	1748			
Slate & Sand			1748	1813			
Little Lime			1813	1843			
Pencil Cave			1843	1860			
Big Lime			1860	2060			
Red Rock			2060	2075			
Big Injun Sand			2075	2090			
Slate & Shells			2090	2195			
Big Shell			2195	2265			
Slate & Shale			2265	2540			
Berea Sand			2540	2566			
Slate & Shells			2566	2616			
Total depth			2616'				

Gas from 2543' to 2555'



JAN 7 1955

