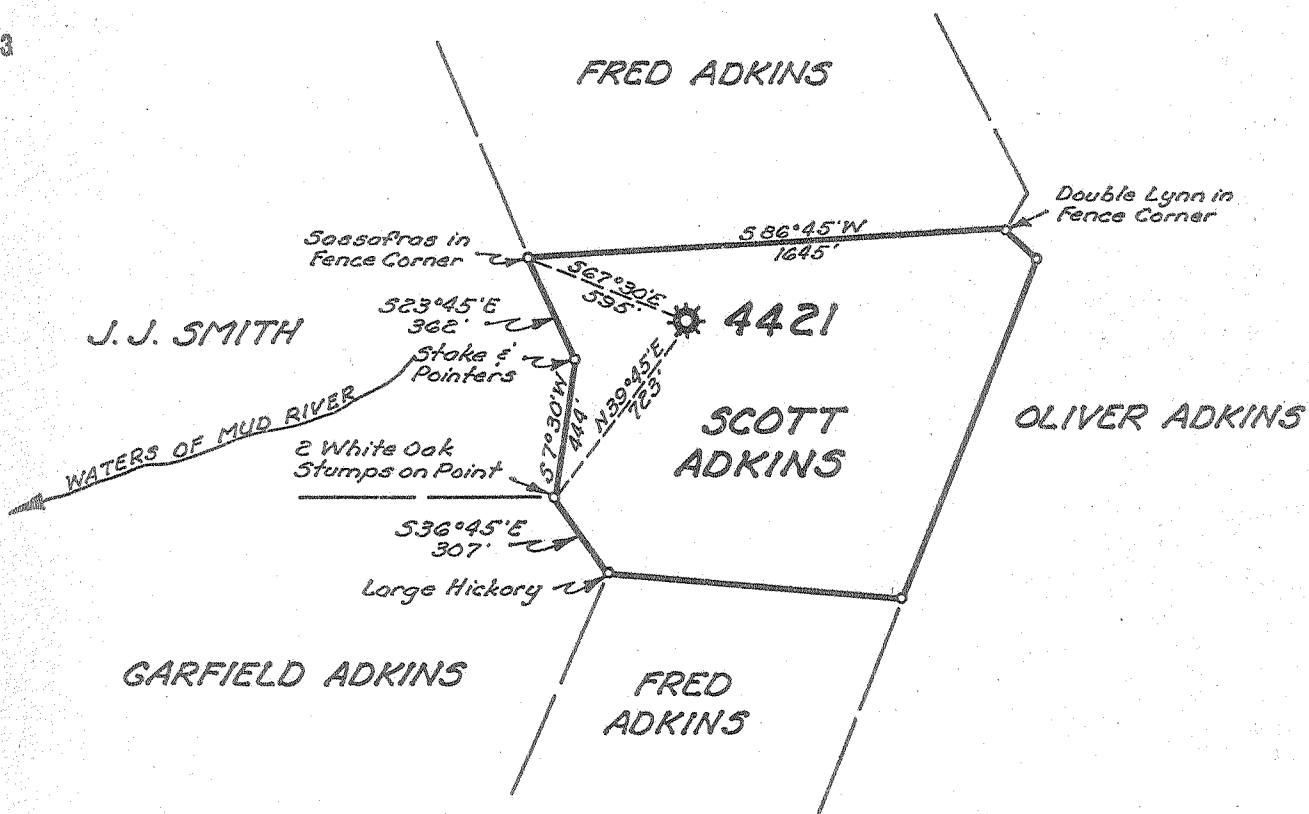


Latitude $38^{\circ} 15'$

Longitude $82^{\circ} 05'$



New Location
 Drill Deeper
 Abandonment

MAY 9 1955

Handwritten:
 ✓
 O.W.W.
 37A

Company UNITED FUEL GAS CO.
 Address CHARLESTON, W. VA.
 Farm SCOTT ADKINS
 Tract _____ Acres 40 Lease No. 34734
 Well (Farm) No. _____ Serial No. 4421
 Elevation (Spirit Level) 926.10'
 Quadrangle MIDKIFF
 County LINCOLN District UNION
 Engineer Hubert R. Renell
 Engineer's Registration No. 2529
 File No. 36-47 Drawing No. _____
 Date 4-12-55 Scale 1" = 660'

STATE OF WEST VIRGINIA
 DEPARTMENT OF MINES
 OIL AND GAS DIVISION
 CHARLESTON

WELL LOCATION MAP
 FILE NO. LIN-1140-A

+ Denotes location of well on United States Topographic Maps, scale 1 to 62,500, latitude and longitude lines being represented by border lines as shown.

- Denotes one inch spaces on border line of original tracing.

Handwritten at bottom: SCOTT ADKINS No. 4421 — U.F.G. Co. — LIN-1140-A



STATE OF WEST VIRGINIA
DEPARTMENT OF MINES
OIL AND GAS DIVISION

1468

Quadrangle Midkiff

Permit No. 1140 A

WELL RECORD

Oil or Gas Well Gas
(KIND)

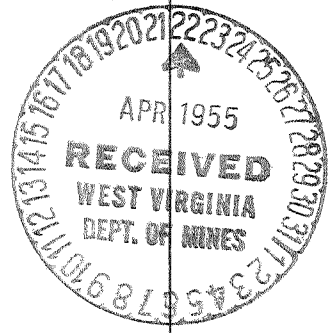
Company UNITED FUEL GAS COMPANY
Address P.O. Box 1273, Charleston 25, W. Va.
Farm Scott Adkins Acres 40
Location (waters) Mud River
Well No. 4421 Elev. 926.10'
District Union County Lincoln
The surface of tract is owned in fee by _____
Address _____
Mineral rights are owned by Scott Adkins
Address Sias, W. Va.
Drilling commenced 5-31-23
Drilling completed 7-2-23
Date Shot _____ From _____ To _____
With _____
Open Flow _____ /10ths Water in _____ Inch
_____ /10ths Merc. in _____ Inch
Volume 700,000 Cu. Ft.
Rock Pressure _____ lbs. _____ hrs.
Oil _____ bbls., 1st 24 hrs.
Fresh water _____ feet _____ feet
Salt water _____ feet _____ feet

| Casing and Tubing | Used in Drilling | Left in Well | Packers |
|-------------------|------------------|--------------|----------------|
| Size | | | |
| 16 | | | Kind of Packer |
| 13 | | | No record |
| 10 | | 10' | Size of |
| 8 1/4 | 170' | | 2x6-5/8" |
| 6 3/4 | | 1578' | Depth set |
| 5 3/16 | | | 1618' |
| 3 | | | Perf. top |
| 2 | | 2306' | Perf. bottom |
| Liners Used | | | Perf. top |
| | | | Perf. bottom |

CASING CEMENTED _____ SIZE _____ No. Ft. _____ Date _____

COAL WAS ENCOUNTERED AT _____ FEET _____ INCHES
_____ FEET _____ INCHES _____ FEET _____ INCHES
_____ FEET _____ INCHES _____ FEET _____ INCHES

| Formation | Color | Hard or Soft | Top | Bottom | Oil, Gas or Water | Depth Found | Remarks |
|----------------|-------|--------------|-----------------|--------|-------------------|-------------|--------------------|
| Salt Sand | | | 880 | 1175 | | | |
| Slate | | | 1175 | 1205 | | | |
| Sand | | | 1205 | 1310 | | | |
| Lime | | | 1310 | 1325 | | | |
| Sand | | | 1325 | 1420 | | | |
| Little Lime | | | 1528 | 1553 | | | |
| Pencil Cave | | | 1553 | 1558 | | | |
| Big Lime | | | 1558 | 1735 | | Show of gas | 1658' Oil at 1723' |
| Red Rock | | | 1735 | 1740 | | | |
| Slate | | | 1740 | 1759 | | | |
| Big Injun Sand | | | 1759 | 1780 | Gas 1757-1767' | | |
| Slate | | | 1780 | 1818 | | | |
| Lime | | | 1880 | 1910 | | | |
| Slate | | | 1910 | 2234 | | | |
| Brown Shale | | | 2234 | 2254 | | | |
| Berea Sand | | | 2254 | 2270 | Gas in Berea | 2256-2267 | |
| Slate | | | 2295 | | | | |
| Total depth | | | 2295' | | | | |



JAN 23 1956

