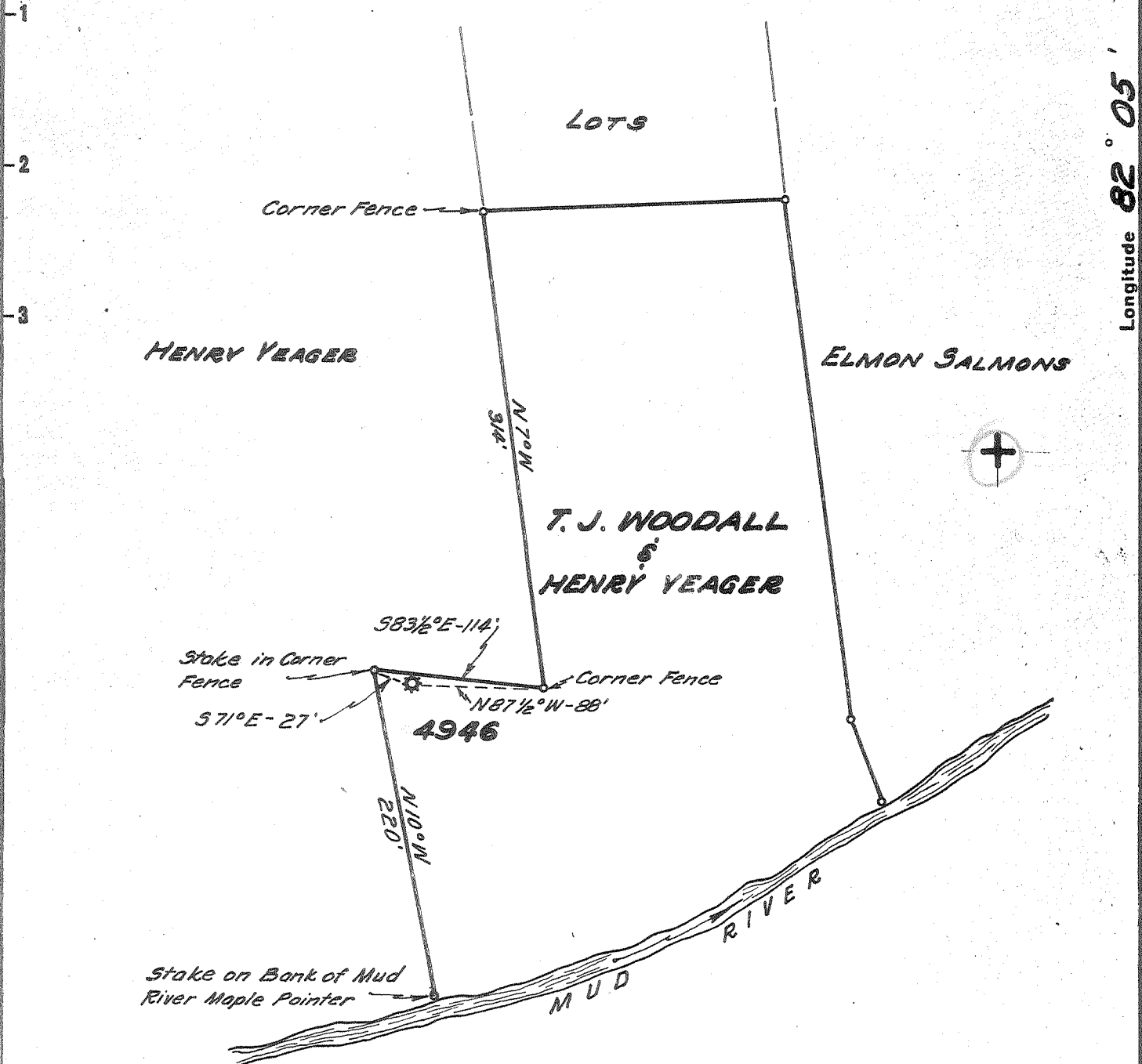


Latitude 38° 20'

Longitude 82° 05'



MILO BIRD

0.94 W
4.0 R

New Location...
 Drill Deeper.....
 Abandonment.....

JUN 20 1955

Company UNITED FUEL GAS CO.
 Address CHARLESTON, W. VA.
 Farm T.J. WOODALL & HENRY YEAGER
 Tract _____ Acres 4 Lease No. 43387
 Well (Farm) No. _____ Serial No. 4946
 Elevation (Spirit Level) 632.6
 Quadrangle MILTON
 County LINCOLN District CARROLL
 Engineer Paul E. Joachims
 Engineer's Registration No. 669
 File No. 36-53 Drawing No. _____
 Date 5-9-55 Scale 1"=100'

STATE OF WEST VIRGINIA
 DEPARTMENT OF MINES
 OIL AND GAS DIVISION
 CHARLESTON

WELL LOCATION MAP
 FILE NO. LIN-1158-A

+ Denotes location of well on United States Topographic Maps, scale 1 to 62,500, latitude and longitude lines being represented by border lines as shown.

- Denotes one inch spaces on border line of original tracing.



STATE OF WEST VIRGINIA
DEPARTMENT OF MINES
OIL AND GAS DIVISION

1443

Quadrangle Milton

Permit No. 1158-A

WELL RECORD

Oil or Gas Well Gas
(KIND)

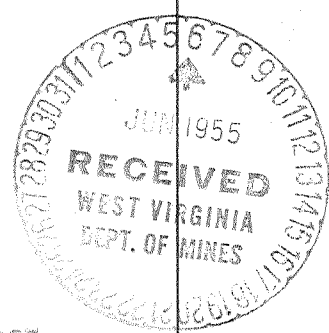
Company UNITED FUEL GAS COMPANY
 Address P.O. Box 1273, Charleston 25, W. Va.
 Farm T.J. Woodall & Henry Yeager Acres 4
 Location (waters) Mud River
 Well No. 4946 Elev. 638.6'
 District Carroll County Lincoln
 The surface of tract is owned in fee by _____
 Address _____
 Mineral rights are owned by Will Holley
 Address Hamlin, W. Va.
 Drilling commenced May 29, 1924
 Drilling completed July 3, 1924
 Date Shot 7-3-24 From _____ To _____
 With 30 qts.
 Open Flow 30 /10ths Water in 2 Inch
 _____ /10ths Merc. in _____ Inch
 Volume 231,000 Cu. Ft.
 Rock Pressure _____ lbs. _____ hrs.
 Oil _____ bbls., 1st 24 hrs.
 Fresh water _____ feet _____ feet
 Salt water _____ feet _____ feet

| Casing and Tubing | Used in Drilling | Left in Well | Packers |
|-------------------|------------------|--------------|----------------|
| Size | | | Kind of Packer |
| 16 | | | |
| 13 | | | |
| 10 | | | Size of |
| 8 1/2 | | 217' | |
| 6 5/8 | | | Depth set |
| 5 3/16 | | 1540' | |
| 3 | | | Perf. top |
| 2 | | 1972' | Perf. bottom |
| Liners Used | | | Perf. top |
| | | | Perf. bottom |

CASING CEMENTED _____ SIZE _____ No. Ft. _____ Date _____

COAL WAS ENCOUNTERED AT _____ FEET _____ INCHES
 _____ FEET _____ INCHES _____ FEET _____ INCHES
 _____ FEET _____ INCHES _____ FEET _____ INCHES

| Formation | Color | Hard or Soft | Top | Bottom | Oil, Gas or Water | Depth Found | Remarks |
|-------------|-------|--------------|-------|--------|-------------------|-------------|---------|
| Surface | | | 0 | 64 | | | |
| Sand | | | 64 | 120 | | | |
| Slate | | | 120 | 150 | | | |
| Sand | | | 150 | 375 | | | |
| Slate | | | 375 | 520 | | | |
| Sand | | | 520 | 560 | | | |
| Slate | | | 560 | 620 | | | |
| Sand | | | 620 | 650 | | | |
| Slate | | | 650 | 715 | | | |
| Salt Sand | | | 715 | 1090 | | | |
| Slate | | | 1090 | 1135 | | | |
| Maxon Sand | | | 1135 | 1180 | | | |
| Slate | | | 1180 | 1195 | | | |
| Sand | | | 1195 | 1210 | | | |
| Slate | | | 1210 | 1220 | | | |
| Little Lime | | | 1220 | 1235 | | | |
| Pencil Cave | | | 1235 | 1245 | | | |
| Big Lime | | | 1245 | 1432 | | | |
| Brake | | | 1432 | 1452 | | | |
| Big Lime | | | 1452 | 1492 | | | |
| Slate | | | 1492 | 1502 | | | |
| Squaw Sand | | | 1502 | 1517 | | | |
| Slate | | | 1517 | 1950 | | | |
| Berea Sand | | | 1950 | 1968 | | | |
| Total depth | | | 1972' | | | | |



AUG 12 1955

