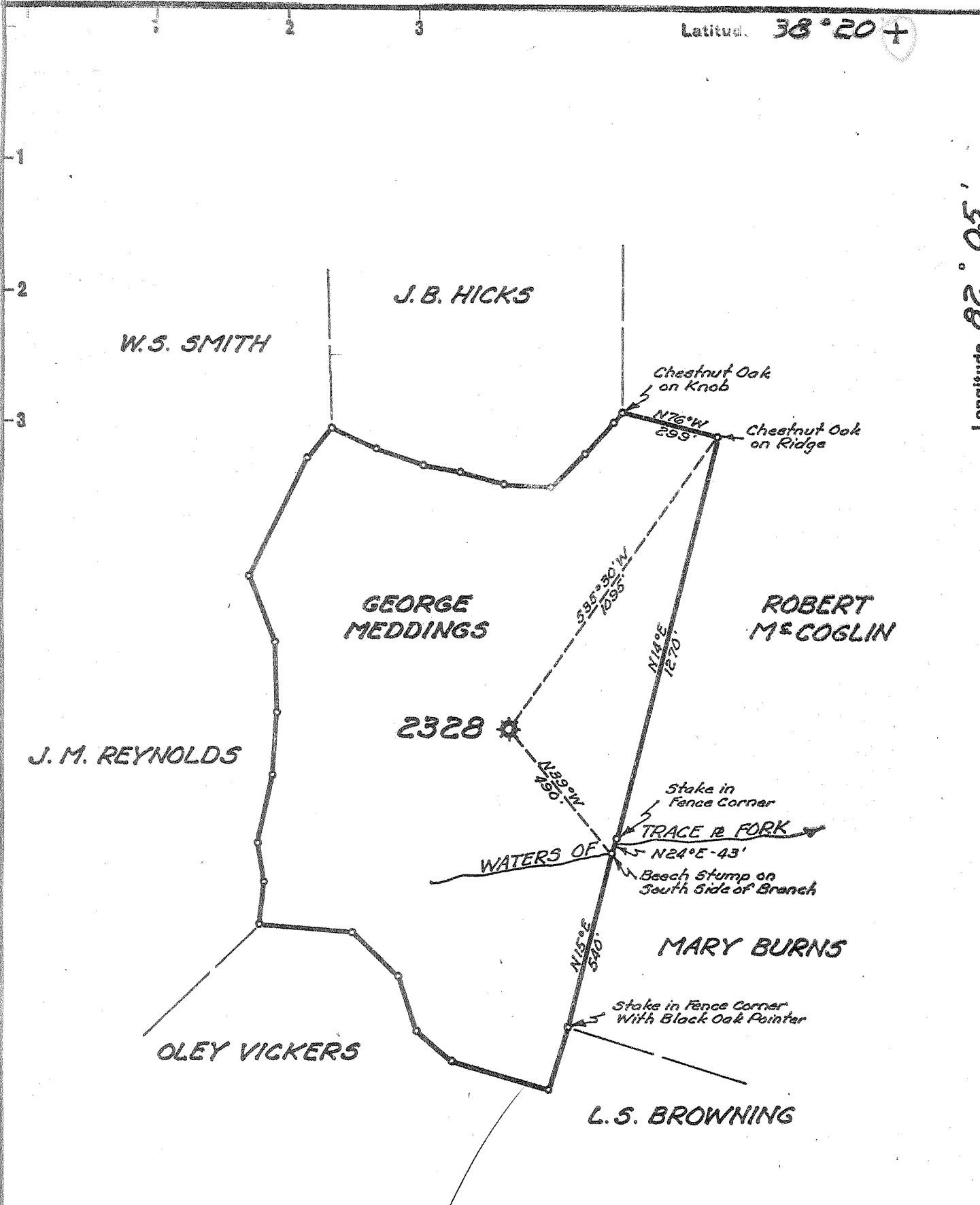


Latitude  $38^{\circ}20'$

Longitude  $82^{\circ}05'$



New Location..   
 Drill Deeper.....   
 Abandonment.....

✓ JUL 5 1955

Company UNITED FUEL GAS CO.  
 Address CHARLESTON, W.VA.  
 Farm GEORGE MEDDINGS  
 Tract \_\_\_\_\_ Acres 44 Lease No. 24632  
 Well (Farm) No. \_\_\_\_\_ Serial No. 2328  
 Elevation (Spirit Level) 868.0'  
 Quadrangle MILTON  
 County LINCOLN District CARROLL  
 Engineer Paul E. Harrison  
 Engineer's Registration No. 669  
 File No. 36-57 Drawing No. \_\_\_\_\_  
 Date 5-18-55 Scale 1"=400'

STATE OF WEST VIRGINIA  
 DEPARTMENT OF MINES  
 OIL AND GAS DIVISION  
 CHARLESTON

**WELL LOCATION MAP**  
 FILE NO. LIN-1183-A

✦ Denotes location of well on United States Topographic Maps, scale 1 to 62,500, latitude and longitude lines being represented by border lines as shown.

— Denotes one inch spaces on border line of original tracing.

GEORGE MEDDINGS No. 2328 — U.F.G. Co., — LIN-1183-A



STATE OF WEST VIRGINIA  
DEPARTMENT OF MINES  
OIL AND GAS DIVISION

14.76

Quadrangle Milton  
Permit No. 1183A

WELL RECORD

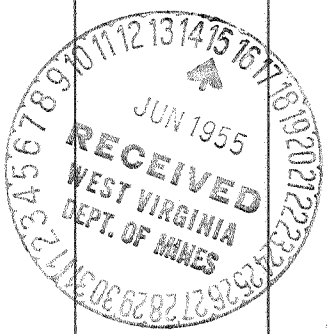
Oil or Gas Well Gas  
(KIND)

Company UNITED FUEL GAS CO.  
 Address P.O. Box 1273, Charleston 25, W. Va.  
 Farm George Meddings Acres 50  
 Location (waters) Trace Fork  
 Well No. 2328 Elev. 868'  
 District Carroll County Lincoln  
 The surface of tract is owned in fee by \_\_\_\_\_  
 Address \_\_\_\_\_  
 Mineral rights are owned by Della Burdette  
Box 170 Address Pt. Pleasant, W.Va.  
 Drilling commenced 1-9-19  
 Drilling completed 3-14-19  
 Date Shot \_\_\_\_\_ From \_\_\_\_\_ To \_\_\_\_\_  
 With \_\_\_\_\_  
 Open Flow \_\_\_\_\_ /10ths Water in \_\_\_\_\_ Inch  
 \_\_\_\_\_ /10ths Merc. in \_\_\_\_\_ Inch  
 Volume 1,000,000 Cu. Ft.  
 Rock Pressure \_\_\_\_\_ lbs. \_\_\_\_\_ hrs.  
 Oil \_\_\_\_\_ bbls., 1st 24 hrs.  
 Fresh water \_\_\_\_\_ feet \_\_\_\_\_ feet  
 Salt water \_\_\_\_\_ feet \_\_\_\_\_ feet

Casing and Tubing	Used in Drilling	Left in Well	Packers
Size			Kind of Packer
16			
18			
10		20'8"	Size of
8 1/4	266'1"		
6 3/4		1411'	Depth set
5 3/16		314'9"	
3			Perf. top
2		2242'2"	Perf. bottom
Liners Used			Perf. top
			Perf. bottom

CASING CEMENTED \_\_\_\_\_ SIZE \_\_\_\_\_ No. Ft. \_\_\_\_\_ Date \_\_\_\_\_  
 COAL WAS ENCOUNTERED AT \_\_\_\_\_ FEET \_\_\_\_\_ INCHES  
 \_\_\_\_\_ FEET \_\_\_\_\_ INCHES FEET \_\_\_\_\_ INCHES  
 \_\_\_\_\_ FEET \_\_\_\_\_ INCHES FEET \_\_\_\_\_ INCHES

Formation	Color	Hard or Soft	Top	Bottom	Oil, Gas or Water	Depth Found	Remarks
Earth			0	137			
Sand			137	160			
Slate			160	355			
Sand			355	525			
Slate & Sand			525	829			
2nd Salt Sand			935	1349			
Break			1349	1354			
Maxon			1354	1395			
Little Lime			1395	1423			
Pencil Cave			1423	1427			
Big Lime			1427	1607			
Slate			1607	1619			
Big Injun			1619	1669			
Slate			1669	1677			
Squaw			1677	1720			
Slate & Shells			1720	1728			
Berea			2173	2192			
Total depth			2235'				



AUG 12 1955

