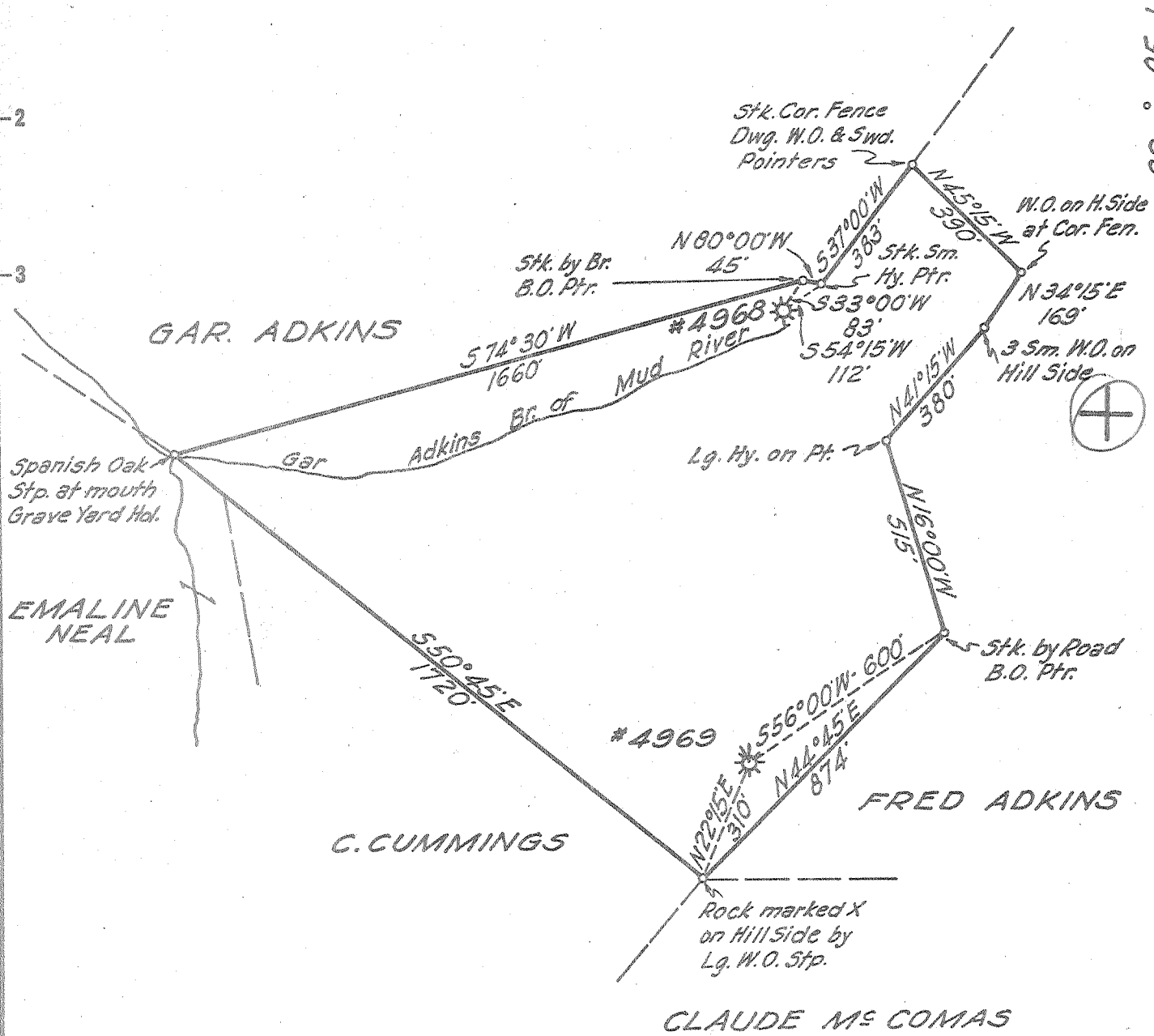


Latitude 38° 15'

Longitude 82° 05'



New Location
 Drill Deeper
 Abandonment

JUN 17 1957

8.48 W
 4.1 L

Company	UNITED FUEL GAS CO.
Address	CHARLESTON, W. VA.
Farm	LELIA ADKINS
Tract	Acres 4 1/4 Lease No. 43405
Well (Farm) No.	Serial No. 4968
Elevation (Spirit Level)	785.0 B
Quadrangle	MIDKIFF
County	LINCOLN District UNION
Engineer	May E. Jackson
Engineer's Registration No.	669
File No.	36-47 Drawing No.
Date	5-21-57 Scale 1"=400'

STATE OF WEST VIRGINIA
 DEPARTMENT OF MINES
 OIL AND GAS DIVISION
 CHARLESTON

WELL LOCATION MAP
 FILE NO. LIN-1242-A

+ Denotes location of well on United States Topographic Maps, scale 1 to 62,500, latitude and longitude lines being represented by border lines as shown.
 - Denotes one inch spaces on border line of original tracing.