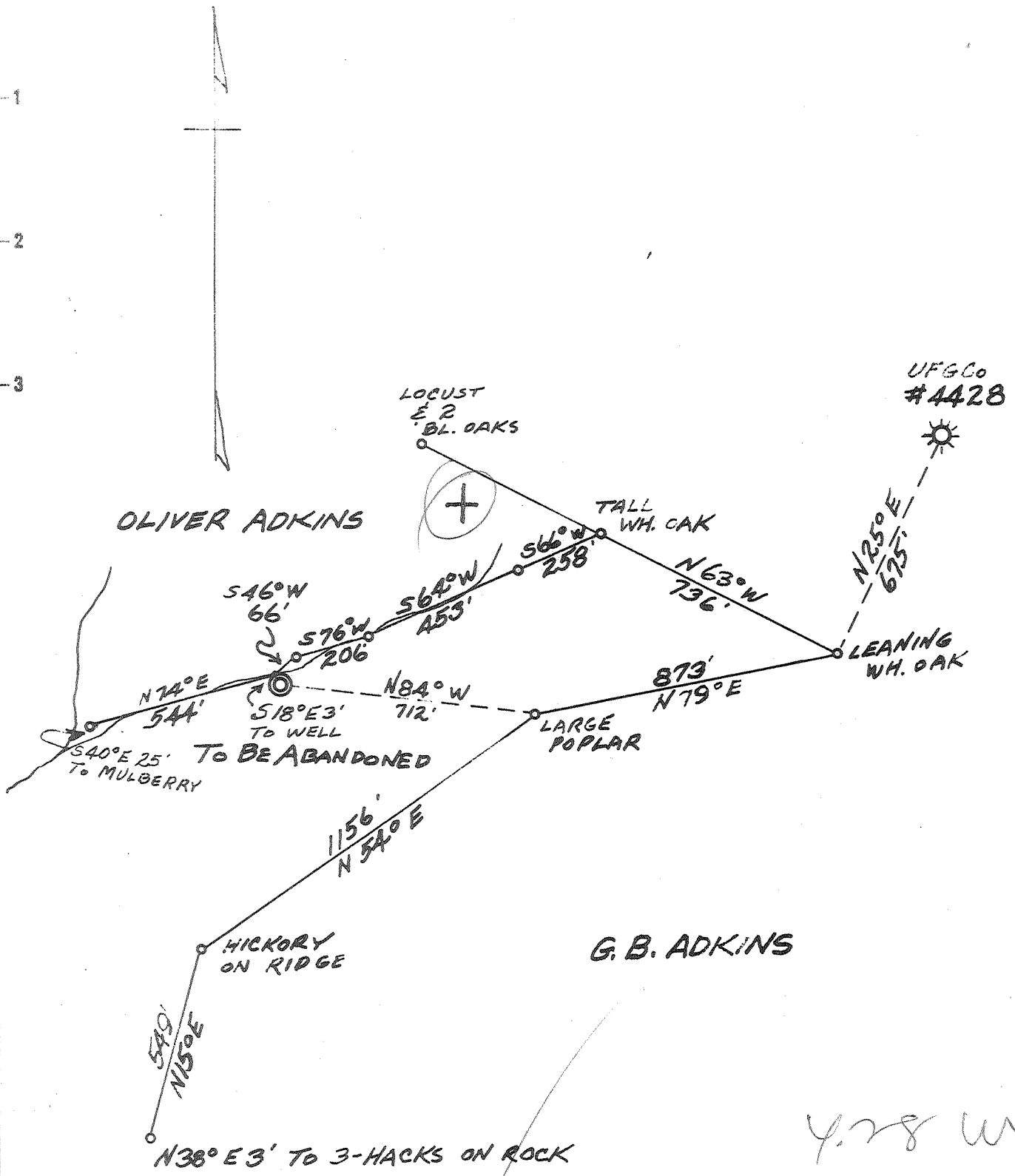


Latitude 30 15

Longitude 82° 00'



- New Location
- Drill Deeper
- Abandonment

SEP 6 1959

ELMER CUMMINGS HEIRS (SURFACE)
SWEETLAND LAND & MIN. Co (MINERAL)

4.28 W
4.03

Company ROY E McCOMAS
 Address HUNTINGTON, W.VA.
 Farm ELMER CUMMINGS HEIRS
 Tract 401 Acres 158.25 Lease No. _____
 Well (Farm) No. 4 Serial No. _____
 Elevation (Spirit Level) 812'
 Quadrangle MIDKIFF
 County LINCOLN District UNION
 Engineer COPY FROM G.C. EWING
 Engineer's Registration No. 309
 File No. _____ Drawing No. _____
 Date AUG. 1959 Scale 1" = 400'

STATE OF WEST VIRGINIA
DEPARTMENT OF MINES
OIL AND GAS DIVISION
CHARLESTON

WELL LOCATION MAP

FILE NO. LIN-1264-A

- + Denotes location of well on United States Topographic Maps, scale 1 to 62,500, latitude and longitude lines being represented by border lines as shown.
- Denotes one inch spaces on border line of original tracing.

ELMER CUMMINGS HEIRS No. 4 ROY E McCOMAS LIN-1264-A