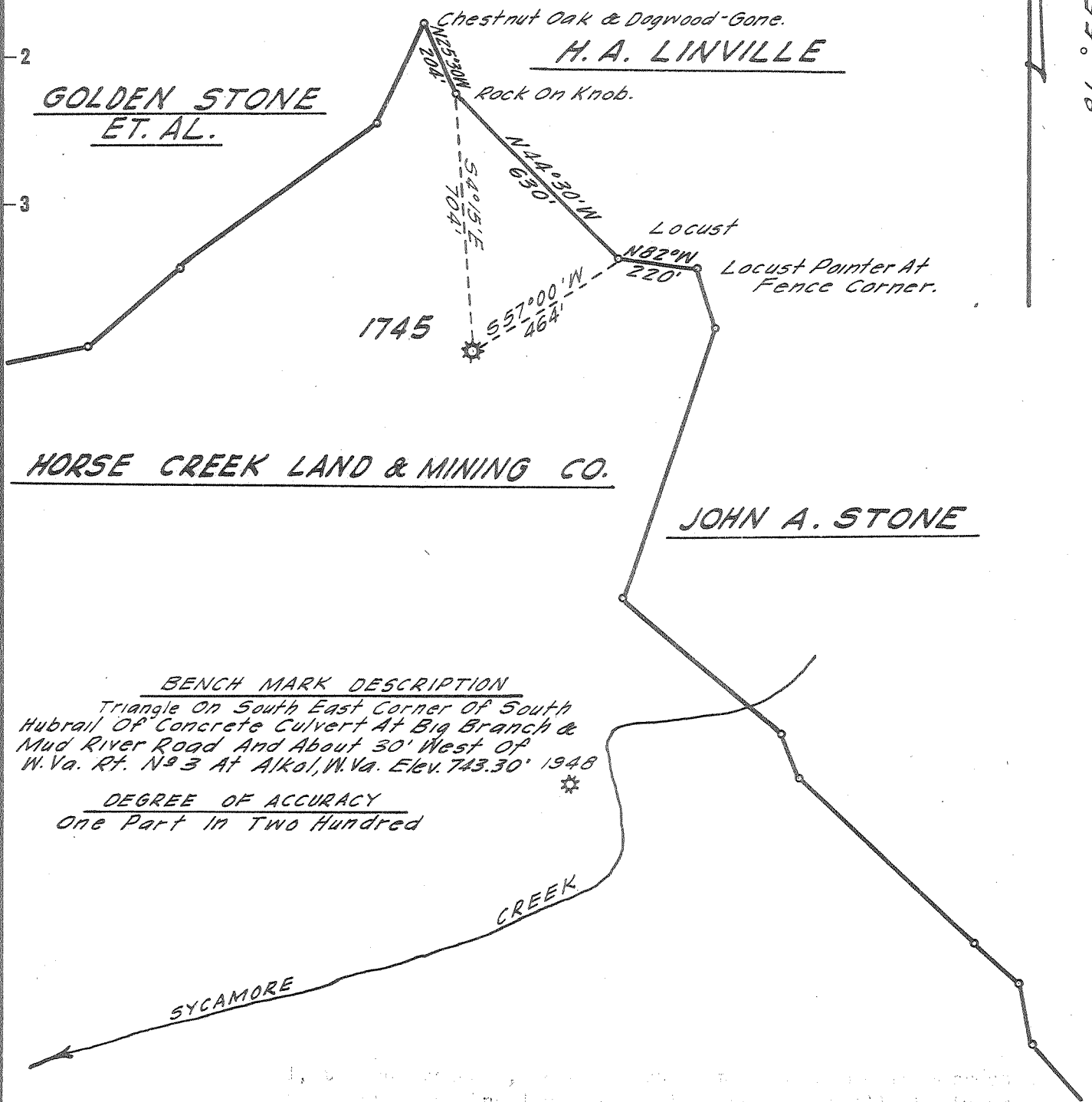


Latitude 38° 10'

Longitude 81° 55'

+ 1.01 S  
2.87 W



GOLDEN STONE  
ET. AL.

Chestnut Oak & Dogwood-Gone.  
H. A. LINVILLE

Rock On Knob.

1745

Locust  
Locust Pointer At  
Fence Corner.

HORSE CREEK LAND & MINING CO.

JOHN A. STONE

BENCH MARK DESCRIPTION

Triangle On South East Corner Of South  
Hubrail Of Concrete Culvert At Big Branch &  
Mud River Road And About 30' West Of  
W. Va. Rt. No 3 At Alkal, W. Va. Elev. 743.30' 1948

DEGREE OF ACCURACY

One Part In Two Hundred

- New Location
- Drill Deeper
- Abandonment

*Seibert R. Russell*

Company UNITED FUEL GAS CO.  
 Address CHARLESTON W. VA.  
 Farm HORSE CRK. LAND & MINING CO.  
 Tract \_\_\_\_\_ Acres 11,324 Lease No. 4976  
 Well (Farm) No. \_\_\_\_\_ Serial No. 1745  
 Elevation (Spirit Level) 1077.48'  
 Quadrangle MADISON-WC  
 County LINCOLN District JEFFERSON  
 Engineer Seibert R. Russell  
 Engineer's Registration No. 2529  
 File No. 42-45 Drawing No. \_\_\_\_\_  
 Date MARCH 5, 1965 Scale 1" = 400'

STATE OF WEST VIRGINIA  
DEPARTMENT OF MINES  
OIL AND GAS DIVISION  
CHARLESTON

**WELL LOCATION MAP**  
FILE NO. LIN-1311-A

+ Denotes location of well on United States  
Topographic Maps, scale 1 to 62,500, lat-  
itude and longitude lines being represented  
by border lines as shown.

- Denotes one inch spaces on border line  
of original tracing.