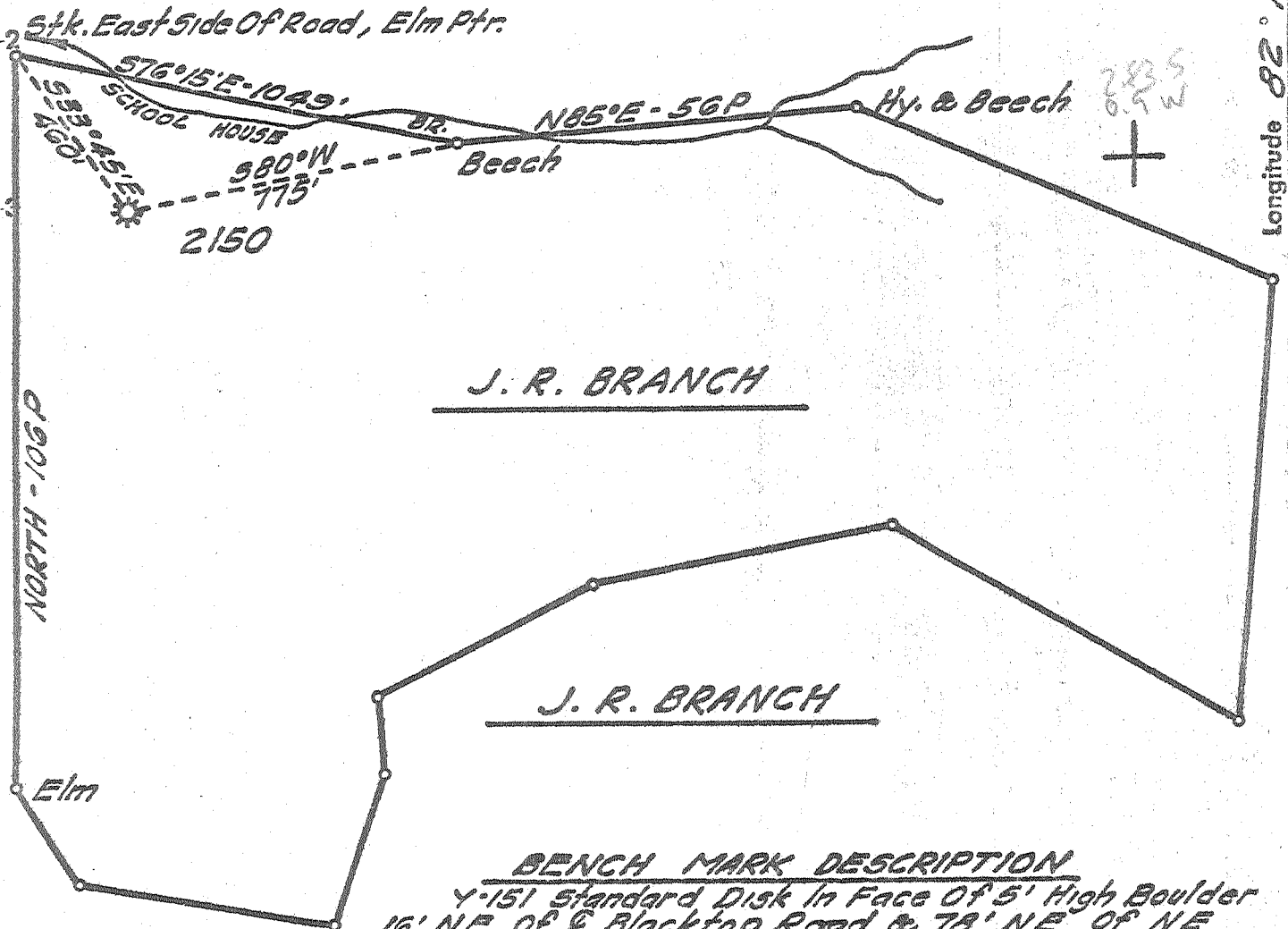


Latitude 38° 15'

C. W. EVANS, ET. AL.



BENCH MARK DESCRIPTION  
 4.151 Standard Disk In Face Of 5' High Boulder  
 16' NE OF E Blacktop Road & 78' NE OF NE  
 Rail of C.O., 0.85 Mi. South From Branchland  
 Station & 0.35 Mi. South Of Mile Post 23.  
 Elev. 613.17'

ACCURACY One Part In 200

- Fracture Before 6/5/29
- New Location
- Drill Deeper
- Redrill
- Abandonment

I, the undersigned, hereby certify that this map is correct to the best of my knowledge and belief and shows all the information required by Paragraph 5 of the Rules and Regulations of the Oil and Gas Section of the Mining Laws of West Virginia.  
 The accuracy of this survey is within the limits and as prescribed in Paragraph 5 by the Oil and Gas Division of the Department of Mines Regulations.

Company UNITED FUEL GAS CO.  
 Address CHARLESTON, W. VA.  
 Farm J. R. BRANCH  
 Tract \_\_\_\_\_ Acres 75 Lease No. 24622  
 Well (Farm) No. \_\_\_\_\_ Serial No. 2150  
 Elevation (Spirit Level) 693.23'  
 Quadrangle MIDKIFF NW  
 County LINCOLN District SHERIDAN  
 Engineer Adrian E. Headman  
 Engineer's Registration No. 2330  
 File No. 32-49 Drawing No. \_\_\_\_\_  
 Date OCT. 2, '70 Scale 1" = 400'

STATE OF WEST VIRGINIA  
 DEPARTMENT OF MINES  
 OIL AND GAS DIVISION  
 CHARLESTON

WELL LOCATION MAP  
 FILE NO. LIN-1356 (A)

+ Denotes location of well on United States Topographic Maps, scale 1 to 62,500 latitude and longitude lines being represented by border lines as shown.  
 - Denotes one inch spaces on border line of original tracing.