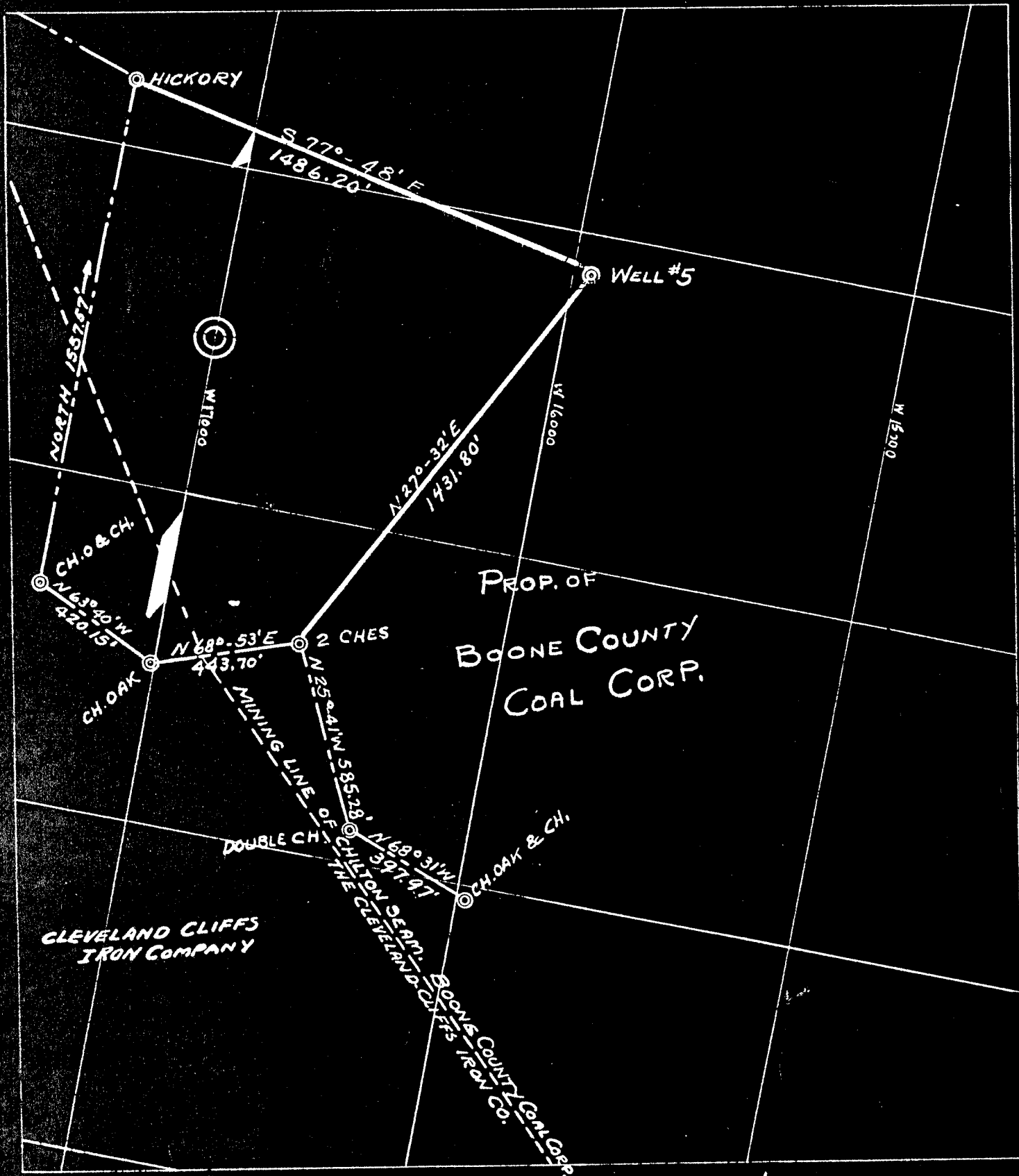


Plat of the Proposed Location of Well No. 5 of the Clendenin Gasline Co. of Clendenin, W. Va. on the Boone County Coal Corp. Farm, consisting of 18000 Acres Located in Logan District Logan County.



Engineer's Certificate.

LOG-2

I, the undersigned, hereby certify that this Map is correct and shows all the information to the best of my knowledge and belief, required by the oil and gas section of the Mining Laws of West Virginia.

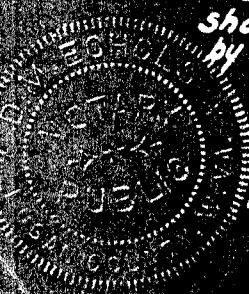
R. Schell
Engineer.

Acknowledge before me a Notary Public

this 13 day of July 1924.

D. W. Echols

my Commission expires June 7, 1934



Boone County Coal Corporation No. 5 Well.

Logan District, Logan County, W. Va.
 By Carbide & Carbon Chemicals Corporation.

Log-A on map.

Dry hole.

Located 1.32 mi. S. of 37° 55' and 2.83 mi. W. of 81° 50'—C—Logan
 Quadrangle.

On south side of Beech Creek.

3.3 mi. N. W. of Seng; 2.6 mi. N. E. of Ethel; 3.5 mi. S. W. of
 Sharples.

	Top.	Bottom.	Thickness.	Elevation (top)
Big Lime -----	2565	2752	187	—1195
Big Injun Sand-----	2752	2822	70	—1332
Berea Sand -----	3266	3292	26	—1896
Corniferous Lime-----	5380	5490	110	—4010
Oriskany Sand -----	5490±			—4120
Lime -----	5490	5830	440	

Thickness, Devonian Shales, 2088 feet.

Total depth, 5958'.

Remarks: Lost tools May 9, 1930 (broke cable).

Hole full water, 1690'. Oil show and water in Berea (3277-85').

Gas in black shale at 5192'; blew tools up hole 10' and stuck them.

Gas show, 12 M. at 5490'.

*2011
50'*

DEEP WELL

DEEP WELL

By Clendenin Gasline Co., by C. R. Barton.
 Elevation, 1370'.
 Space between coal seams were of slate and sand
 62' coal, 15 seams.
 Well was shot at 5195-5380, and 3270-3292'.
 Salt water at 1690'.
 Dry hole.
 Completion reported to Dept. of Mines July 1, 1930.
 Preliminary data sheet missing.

LOGAN 2

was (Logan 'A')

*Clendenin 75
 31.55 1.355
 81.52 680*

	Top.	Bottom.	Thickness
Surface	0		
Coal	47	50	3
Coal	111	116	5
Coal	144	149	5
Coal	272	276	4
Coal	305	310	5
Coal	367	372	5
Coal	430	435	5
Coal	465	469	4
Coal	477	483	6
Coal	538	541	3
Coal	630	634	4
Coal	668	670	2
Coal	706	710	4
Coal	744	848	4
Coal	753	756	3
Slate and sand	756	1360	604
Gas Sand	1360	1497	137
Break	1497	1500	3
Slate	1500	1650	150
Salt Sand (water, 1690')	1650	2034	384
Red rock and slate	2034	2440	406
Maxton Sand	2440	2478	38
Black lime	2478	2510	32
Little Lime	2510	2565	55
Big Lime	2565	2752	187
Big Injun Sand	2752	2822	70
Slate and shells	2822	3248	426
Coffee shale	3248	3266	18
Berea Sand (show of oil, 3277-3285')	3266	3292	26
Slate and shell	3292	4375	1083
Brown shale	4375	4395	20
Black lime	4395	4440	45
Brown shale	4440	4795	355
Gray shale	4795	5080	285
Brown shale	5080	5095	15
Lime, gray (pocket of gas at 5192')	5095	5192	97
Black shale	5192	5380	188
Lime	5380	5958	578
Total depth		5958	

*5095
 1870
 3292*

A

Logan District, Logan County, W. Va.
By Carbide & Carbon Chemicals Corporation (Glendonin Gasoline Co.),
Box W, South Charleston, W. Va.

On head of Beech Creek, 3.3 mi. S. 65° W. of Sharples, 3.3 mi. N. W. of
Seng, 5.2 mi. S. W. of Clothier, and 2.6 mi. N. E. of Ethel.

Began August 8, 1929; completed 1930. Completion reported to Dept. of
Mines July 1, 1930. Broke cable and lost tools May 9, 1930.

Elevation, 1370'.

Well was shot at 5195-5380' and 3270-3292'.

Water at 1690'. Dry hole.

1.28 mi. S. of 37° 55' and 4.43 mi. N. of 37° 50' - 0 - Logan Quadrangle.
Record published on pp. 269-270, Deep-Well Records, 1936 (Vol. VII).

	Top.	Bottom.
Coal (Glenra. 1370')	47	50
Coal (Glenra. 1204')	111	116
Coal, Coalburg (Glenra. 1221')	144	149
Coal, Buffalo Creek (Glenra. 1094')	272	276
Coal, Minifrede (Glenra. 1060')	305	310
Coal, Chilton "A" (Glenra. 998')	367	372
Coal, Chilton (Glenra. 935')	430	435
Coal, Little Chilton (Glenra. 901')	465	469
Coal, Hershaw (Glenra. 887')	477	483
Coal, Dingess (Glenra. 879')	538	541
Coal, Williamson (Glenra. 776')	630	634
Coal (Glenra. 700')	668	670
Coal, Cedar Grove (Glenra. 660')	706	710
Coal, Lower Cedar Grove (Glenra. 671')	744	748
Coal, Alma (Glenra. 608')	762	765
Sand, Upper Nuttall (El. +10')	1360	1497
Break (shale)	1497	1500
Sand, Lower Nuttall (El. -130')	1500	1560
Unrecorded (water, 1690'; hole full)	1560	1875
Salt Sand (Raleigh) (El. 505')	1875	2034
Red rock and slate (El. 664')	2034	2440
Sand, Maxton (El. 1070')	2440	2478
Lime, black (El. 1108')	2478	2510
Little Lime (Glenray) (El. 1140')	2510	2565
Big Lime (El. 1195')	2565	2752
Sand, Big Injun (El. 1382')	2752	2822
Slate and shells	2822	3248
Coffee Shale	3248	3266
Sand, Berea (about 2" of oil on top of water in bucket--2 bailers after standing 48 hrs.) (El. 1896')	3266	3292
Shale, brown - shale & shells 3292-4375	3292	4395
Lime, black, hard 4375-4395	4395	4440
Shale, brown	4440	4795
Lime shells, green; and gray shale	4795	5080
Shale, brown	5080	5095
Shale, black (with layers of limy forma- tion, $\frac{1}{2}$ " to $\frac{1}{4}$ " thick--calcite)	5095	5192
Shale, black (gas, 5192'; blew tools up hole 10' and tuck them) (El. 3822')	5192	5380
Lime, gray, hard, Dorniferous, Helderberg, Bossardville, etc. (gas show, 5490', at horizon of Oriskany Sand; 1/10 W. in 1" --12,000 cu. ft.) (El. 4010')	5380	5830

(OVER)

Field 246

LOG-2

BOONE COUNTY COAL CORPORATION NO. 5 WELL (Continued).

	Top.	Bottom.
Shale, brown, and lime shells (slightly gritty at 5830-5855')	5830	5880
Unrecorded, to bottom	5880	5958

"The record above shows 15 seams of coal with a total thickness of 62 feet. It is quite probable some of the thicknesses are excessive. A notation on the record states the 'space between coal veins were of slate and sand'. In another record of this well, the lowest coal is given as 753-756' instead of 762-765' as above recorded. In this record the Salt Sand is given as from 1650-2034' with slate occupying the interval from 1500-1650' where the Lower Nuttall Sand is given above. Red rock and slate are given from 2034-2440'. The oil show in the Berea is given as 3277-3285', with slate and shell coming below the Berea from 3292-4375' and brown shale from 4375-4395', 20' thick. The other figures appear to agree on the two records."

WEST VIRGINIA DEPARTMENT OF MINES

Oil and Gas Section

PRELIMINARY DATA SHEET NO. 1

File No. 209-2 Well No. 5

Clendenin Gasoline Company, of 437 East Ave., South
Charleston, W. Va. on ththe Boone County Coal Corp. Farm
containing 18000 acres. Location.....

Logan District, in Logan County, West Virginia.

The surface of the above tract is owned in fee by Boone County Coal Corp.
of Sharples, W. Va. address, and the mineral rights are owned by

Clendenin Gasoline Co of 437 East Ave., South Charleston,

The oil and gas privileges are held under lease by the above named company, and this well is drilled under
permit No..... issued by the West Virginia Department of Mines, Oil and Gas Section,

July 26, 1929.

Elevation of surface at top of well, 1370. Spirit Barometric.

The number of feet of the different sized casings used in the well.

feet	size	csq.	feet	size	Wood conductor.
<u>35'-5"</u>	<u>13 1/2"</u>	<u>2600'-00"</u>	<u>6 5/8"</u>		
<u>793'-0"</u>	<u>10"</u>				
<u>2086'-0"</u>	<u>8 1/4"</u>				

..... packer of..... size, set at.....
..... packer of..... size, set at.....

..... in casing perforated at..... feet to..... feet.

..... in casing perforated at..... feet to..... feet.

Coal was encountered at 47 feet; thickness 36 inches, and at 111
feet; thickness 60 inches; and at 144 feet; thickness 60 inches.

Liners were used as follows: (Give details) None.

Coal was also found as follows:

272'-276', 305'-310', 367'-372', 430'-435', 465'-469',
477'-483', 538'-541', 630'-634', 668'-670', 706'-710', 744'-748',
753'-756'.

July 5, 1930.

Date.

Approved Clendenin Gasoline Co. Owner.

By John M. Sphar (Title) Supt.



Log-2

Log-2

COMPLETION DATA SHEET NO. 2

FORMATION RECORD

NAME	COLOR	CHARACTER	OIL, GAS OR WATER	TOP	BOTTOM	THICK-NESS	TOTAL DEPTH	REMARKS
Surface				0				Elev. 1370
Coal				47	50	3		
Coal				111	116	5		
Coal				144	149	5		
Coal				272	276	4		
Coal				305	310	5		
Coal				367	372	5		
Coal				430	435	5		Space between Coal Veins were of Slate and Sand
Coal				465	469	4		
Coal				477	483	6		
Coal				538	541	3		
Coal				630	634	4		
Coal				668	670	2		
Coal				706	710	4		
Coal				744	748	4		
Coal				753	756	3		
Slate & Sand				756	1360	604		
Gas Sand				1360	1497	137		
Break				1497	1500	3		
Slate			Water	1500	1650	150		
Salt Sand			1690	1650	2034	384		
Red Rock) and Slate)				2034	2440	406		
Maxon				2440	2478	38		
Black Lime				2478	2510	32		
Little Lime				2510	2565	55		
Big Lime				2565	2752	187		
Big Injun				2752	2822	70		
Slate &) Shells)				2822	3248	426		
Coffee Shale				3248	3266	18		
Berea		Sq.Ft.	Show of Oil 3277 to 3285.	3266	3292	26		
Slate &) Shell)				3292	4375	1083		
Brown Shale				4375	4395	20		
Black Lime				4395	4440	45		
Brown Shale				4440	4795	355		
Gray Shale				4795	5080	285		
Brown Shale				5080	5095	15		
Lime	Gray		Pocket of gas at 5192	5095	5192	97		
Black Shale				5192	5380	188		
Lime				5380	5958	578	5958	

62' coal

Well was ~~not shot~~ shot at 5195 to 5380 feet; well was shot at 3270 to 3292 feet

Salt ~~fresh~~ water at 1690 feet; Salt fresh water at feet.

Well was ~~producing~~ dry hole.

July 1, 1930
Date

Clendenin Gasoline Co.
Approved by C.R. Barton
Owner

NOTE: All bottom formations must be noted as indicated above and all key-rocks and oil and gas sands must be recorded under their proper geological names in the district as well as any local names for which strata that may be common to the district.

Plugged 7-2-30

Log-2