

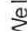

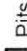
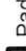



Diversified Gas & Oil Corporation
 100 Diversified Way
 Pikeville KY, 41051

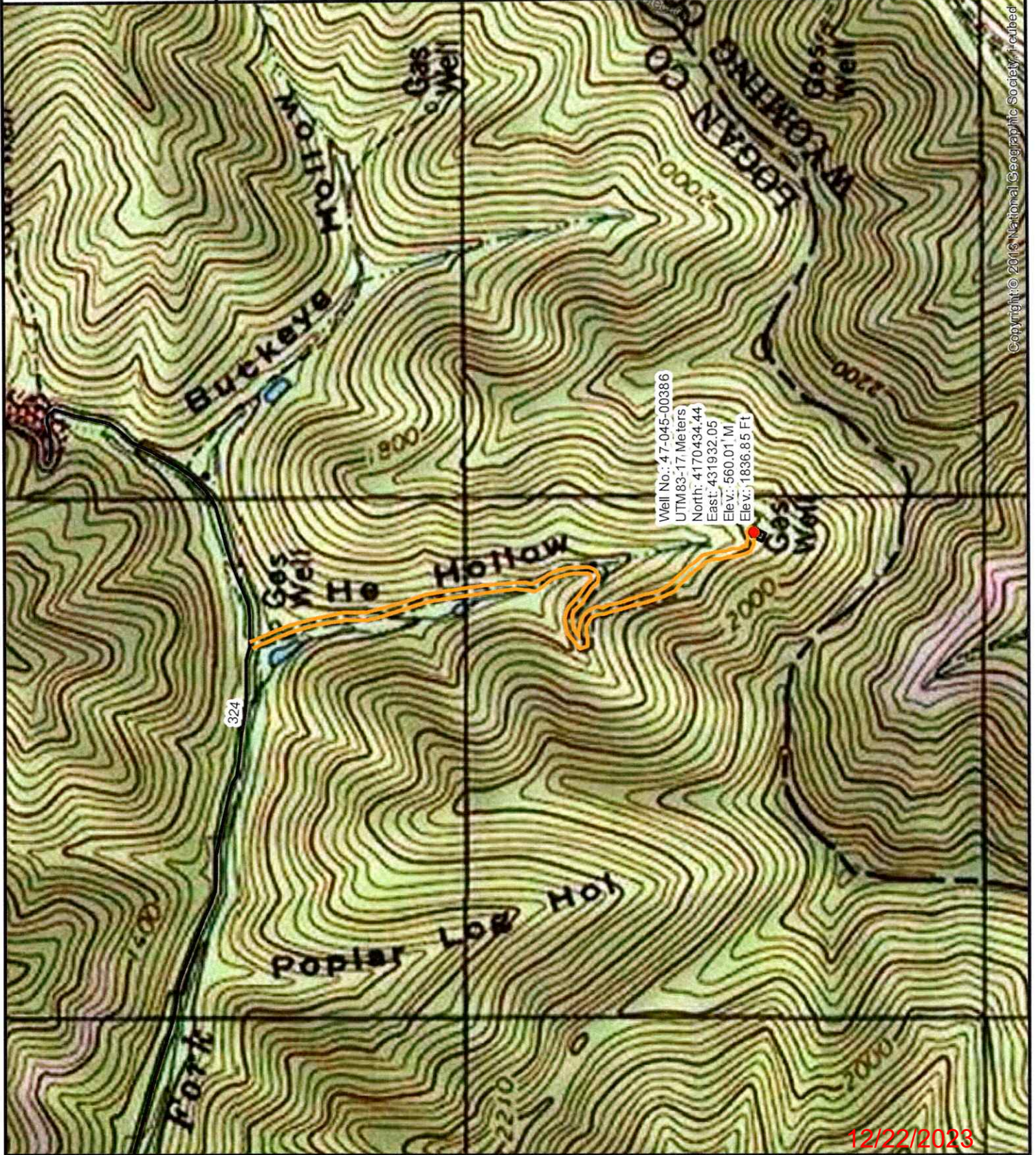
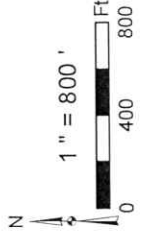
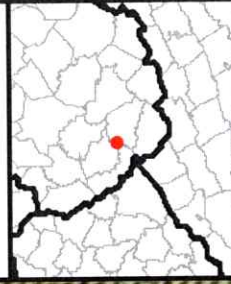
47-045-00386

Plugging Map

Legend

-  Well
-  Access Road
-  Pits
-  Pad
-  Public Roads

RECEIVED
 Office of Oil and Gas
 DEC 11 2023
 WV Department of
 Environmental Protection



Copyright © 2012 National Geographic Society. Reprinted

12/22/2023



Diversified Gas & Oil Corporation
 100 Diversified Way
 Pikeville KY, 41051

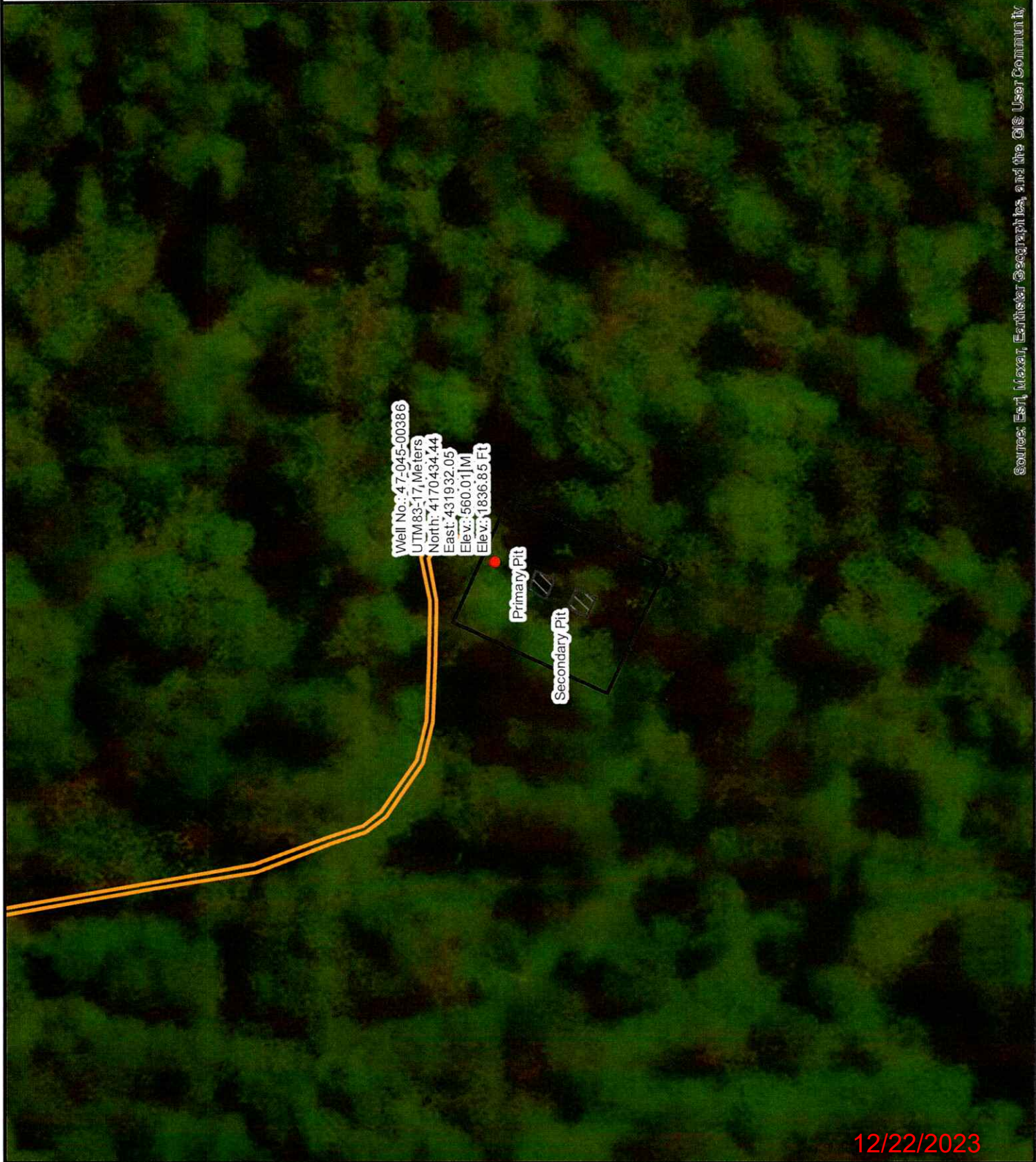
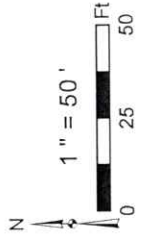
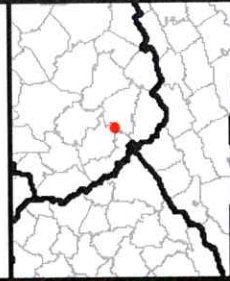
47-045-00386

Plugging Map

Legend

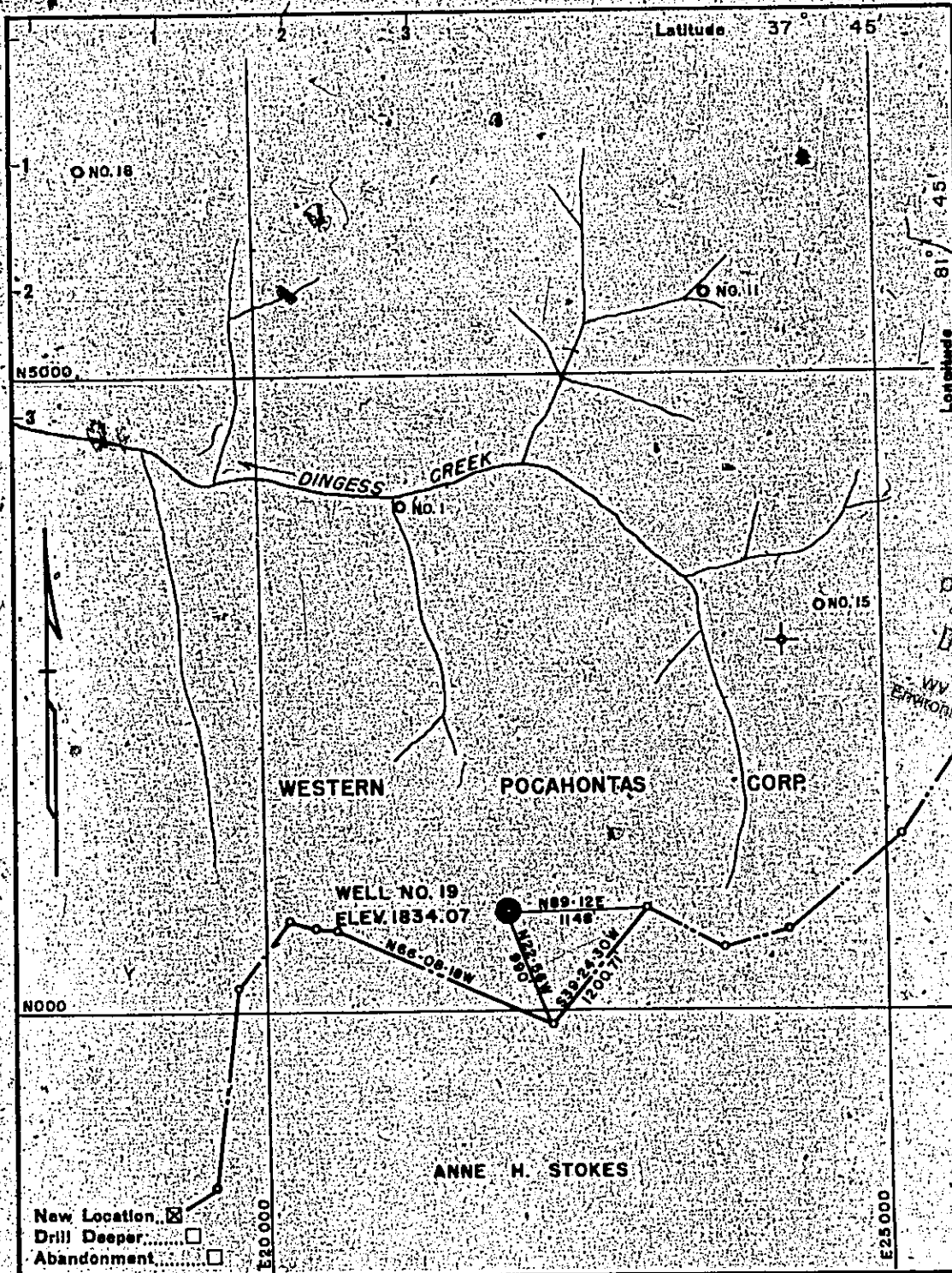
- Well
- Access Road
- Pits
- Pad
- Public Roads

RECEIVED
 Office of Oil and Gas
 DEC 11 2023
 WV Department of
 Environmental Protection



Source: Esri, Maxar, Earthstar Geographies, and the GIS User Community

12/22/2023



RECEIVED
 Office of Oil and Gas
 DEC 1 2023
 WV Department of
 Environmental Protection

New Location
 Drill Deeper
 Abandonment

Company <u>WESTERN POCAHONTAS CORP.</u>	
Address <u>BOX 509, HUNTINGTON, W. VA.</u>	
Farm <u>NEWBERRY LANDS OF W.P.C.</u>	
Tract	Acres <u>3793.06</u> Lease No.
Well (Farm) No. <u>13</u>	Serial No. <u>19</u>
Elevation (Spirit Level) <u>1834.07</u>	
Quadrangle <u>GILBERT</u>	
County <u>LOGAN</u>	District <u>TRIADELPHIA</u>
Engineer <u>[Signature]</u>	
Engineer's Registration No. <u>881</u>	
File No.	Drawing No.
Date <u>FEB. 23, 1954</u> Scale <u>1" = 1000'</u>	

STATE OF WEST VIRGINIA
 DEPARTMENT OF MINES
 OIL AND GAS DIVISION
 CHARLESTON

WELL LOCATION MAP
 FILE NO. LOG-386

+ Denotes location of well on United States Topographic Maps, scale 1 to 62,500, latitude and longitude lines being represented by border lines as shown.

- Denotes one inch spaces on border line of original tracing.

12/22/2023