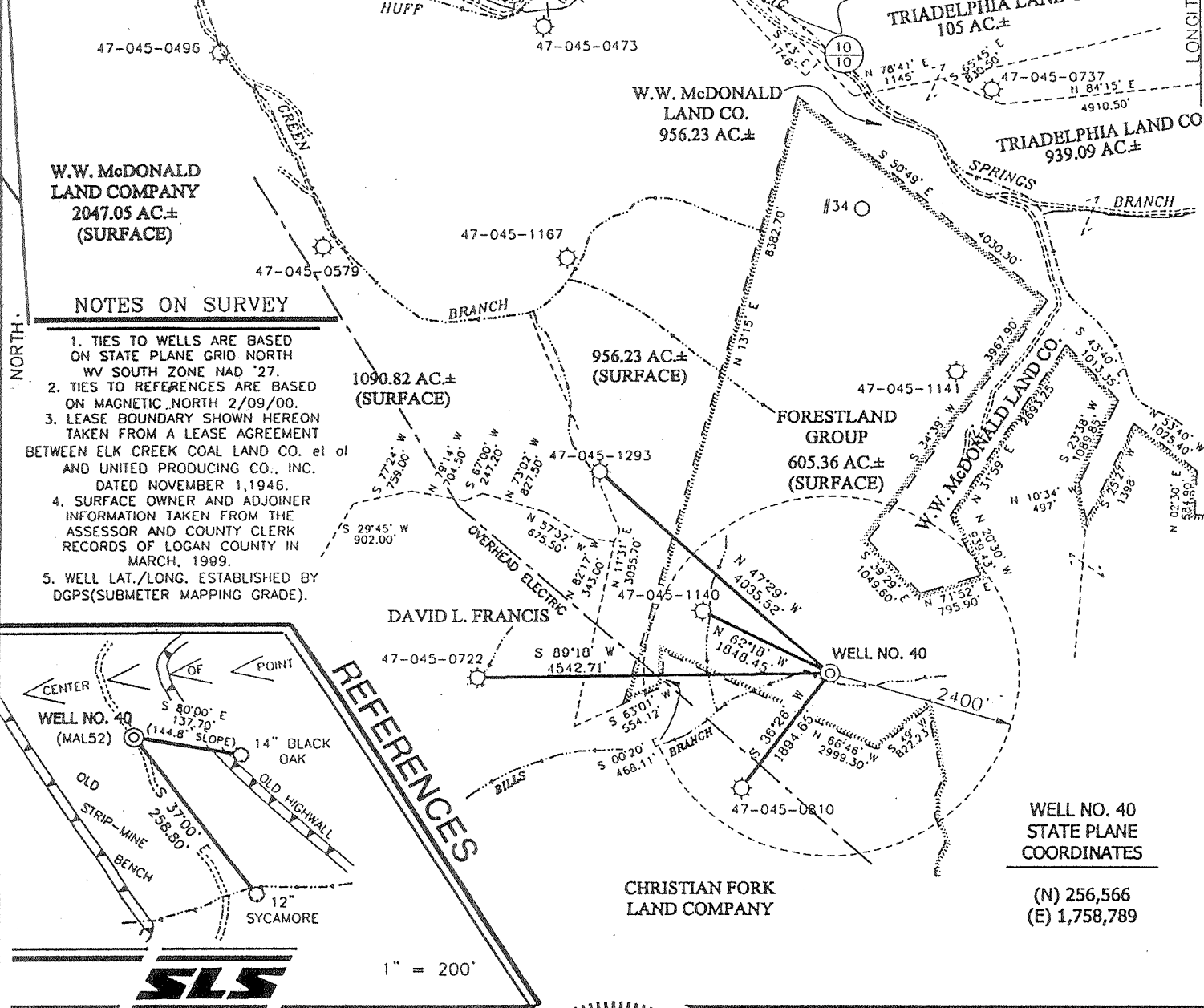


# ELK CREEK COAL LAND COMPANY LEASE

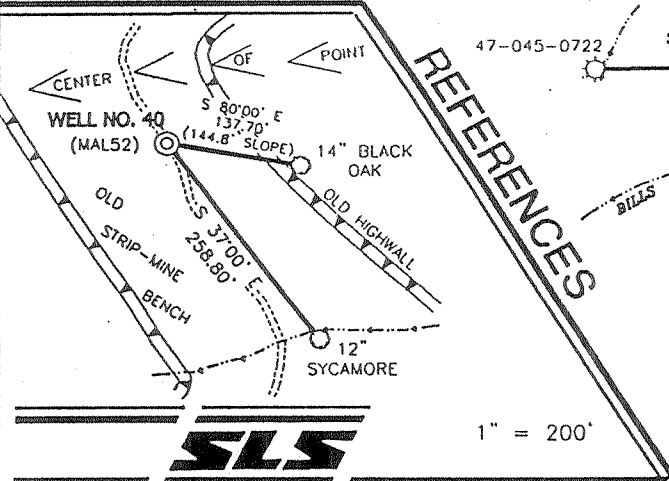
## 7,600 ACRES ±

### WELL NO. 40



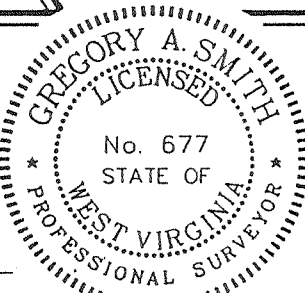
#### NOTES ON SURVEY

1. TIES TO WELLS ARE BASED ON STATE PLANE GRID NORTH WV SOUTH ZONE NAD '27.
2. TIES TO REFERENCES ARE BASED ON MAGNETIC NORTH 2/09/00.
3. LEASE BOUNDARY SHOWN HEREON TAKEN FROM A LEASE AGREEMENT BETWEEN ELK CREEK COAL LAND CO. et al AND UNITED PRODUCING CO., INC. DATED NOVEMBER 1, 1946.
4. SURFACE OWNER AND ADJOINER INFORMATION TAKEN FROM THE ASSESSOR AND COUNTY CLERK RECORDS OF LOGAN COUNTY IN MARCH, 1999.
5. WELL LAT./LONG. ESTABLISHED BY DGPS (SUBMETER MAPPING GRADE).



**WELL NO. 40 STATE PLANE COORDINATES**

(N) 256,566  
(E) 1,758,789



I THE UNDERSIGNED, HEREBY CERTIFY THAT THIS PLAT IS CORRECT TO THE BEST OF MY KNOWLEDGE AND BELIEF AND SHOWS ALL THE INFORMATION REQUIRED BY LAW AND THE REGULATIONS ISSUED AND PRESCRIBED BY THE DEPARTMENT OF ENERGY.

P.S. 677 *Gregory A. Smith*

(+) DENOTES LOCATION OF WELL ON UNITED STATES TOPOGRAPHIC MAPS.

DATE FEBRUARY 29, 2000

OPERATORS WELL NO. ELK CREEK #40


API WELL NO. 47-045-01370

STATE COUNTY PERMIT

MINIMUM DEGREE OF ACCURACY 1 / 2500 FILE NO. 3944P40 (84-54)

PROVEN SOURCE OF ELEVATION SPOT ELEVATION @ MOUTH OF MOORE FORK 864' SCALE 1" = 2000'

STATE OF WEST VIRGINIA  
DIVISION OF ENVIRONMENTAL PROTECTION  
OFFICE OF OIL AND GAS



WELL TYPE : OIL  GAS  LIQUID INJECTION  WASTE DISPOSAL  IF "GAS" PRODUCTION  STORAGE  DEEP  SHALLOW

LOCATION : ELEVATION 1483' WATERSHED BILLS BRANCH OF GUYANDOTTE RIVER

DISTRICT TRIADELPHIA COUNTY LOGAN QUADRANGLE MALLORY 7.5'

SURFACE OWNER FORESTLAND GROUP ACREAGE 605.36

ROYALTY OWNER ISLAND CREEK COAL COMPANY LEASE ACREAGE 7.600

PROPOSED WORK : LEASE NO. 05658

DRILL  CONVERT  DRILL DEEPER  REDRILL  FRACTURE OR STIMULATE  PLUG OFF OLD FORMATION  PERFORATE NEW FORMATION  PLUG AND ABANDON  CLEAN OUT AND REPLUG  OTHER

PHYSICAL CHANGE IN WELL (SPECIFY) \_\_\_\_\_ TARGET FORMATION DEVONIAN SHALE

ESTIMATED DEPTH 6000'

WELL OPERATOR EASTERN STATES OIL AND GAS, INC. DESIGNATED AGENT ROBERT ALLEY

ADDRESS P.O. BOX 2347 CHARLESTON, WV 25328 ADDRESS P.O. BOX 2347 CHARLESTON, WV 25328

DEEP WELL 66 266 JUL 07 2000

State of West Virginia  
Division of Environmental Protection  
Section of Oil and Gas

Reviewed AC

Well Operator's Report of Well Work

Farm Name: Island Creek Coal Co

Operator Well No.: Elk Creek Coal 40

LOCATION: Elevation: 1,483.00

Quadrangle: Mallory

District: Triadelphia

County: Logan

Latitude: 2450 Feet South of Deg. 37 Minutes 42 Seconds 30  
Longitude: 140 Feet West of Deg. 81 Minutes 50 Seconds 0

Company: EASTERN STATES OIL & GAS, INC.  
P.O. Box 2347, 1710 Pennsylvania Avenue  
Charleston, WV 25328

Agent: ROBERT ALLEY

Inspector: Ofie Helmick

Permit Issued: 7/5/00

Well work commenced: 11/03/00

Well work completed: 12/04/00

Verbal Plugging

Permission granted on:

Rotary Rig X Cable Rig \_\_\_\_\_

Total Depth 5770' feet

Fresh water depths (ft) 78'

Salt water depths (ft) 1541'

Casing & Tubing Size	Used in Drilling	Left in Well	Cement Fill Up Cu. Ft.
13-3/8"	32'	32'	GRTD
9-5/8"	497'	497'	201 FT³
7"	2754'	2754'	495 FT³
4-1/2"	5724'	5724'	422 FT³

Is coal being mined in area?

Coal Depths (ft): 78', 91', 575', 675', 764', 952'

OPEN FLOW DATA

Producing formation L. Shale, U. Shale, Berea, Big Lime

Pay Zone Depth (ft): \_\_\_\_\_ See Attach for details

Gas: Initial open flow 21 Bbl/d

Final open flow 1210 Final open flow: \_\_\_\_\_

Time of open flow between initial and final tests \_\_\_\_\_ Hours

Static rock pressure 520 psig (surface pressure) after \_\_\_\_\_ Hours

Second producing formation \_\_\_\_\_

Pay Zone Depth (ft): \_\_\_\_\_

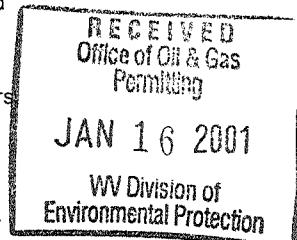
Gas: Initial open flow \_\_\_\_\_ MCF/d Oil: Initial open flow \_\_\_\_\_ Bbl/d

Final open flow: \_\_\_\_\_ MCF/d Final open flow: \_\_\_\_\_

Time of open flow between initial and final tests \_\_\_\_\_ Hours

Static rock pressure \_\_\_\_\_ psig (surface pressure) after \_\_\_\_\_ Hours

NOTE: ON BACK OF THIS FORM PUT THE FOLLOWING: 1) DETAILS OF PERFORATED INTERVALS, FRACTURING OR STIMULATING, PHYSICAL CHANGE, ETC. 2) THE WELL LOG WHICH IS A SYSTEMATIC DETAILED GEOLOGICAL RECORD OF ALL FORMATIONS, INCLUDING COAL ENCOUNTERED BY THE WELLBORE.



For: BLAZER ENERGY CORPORATION

By: [Signature]  
Date: 1/2/01

FEB 23 2001

106 1370

**EQUITABLE PRODUCTION COMPANY**  
**WR-35 COMPLETION REPORT - Attachment**  
**Well Treatment Summary**

Well: Elk Creek Coal 40

API# 47-045-01370

Date	11/30/2000	11/30/2000	11/30/2000	11/30/2000		
Type Frac						
Acid, N <sub>2</sub> , Foam, Water	N <sup>2</sup>	N <sup>2</sup>	N <sup>2</sup>	Acid/N <sup>2</sup>		
Zone Treated	L. Shale	U. Shale	Berea	Big Lime		
# Perfs	40	40	21	18		
From - To:	4831-5700	3787-4760	3622-3642	2942-3052		
BD Pressure @ psi	3002	3057	2665	1848		
ATP psi	3026	2833	2369	1937		
Avg. Rate, B=B/M, S= SCF/M	51,299 S	51,863 S	51,616 S	13 B 13,700 S		
Max. Treat Press psi	3306	3571	2665	3513		
ISIP psi	2692	2884	2020	1168		
	Final	Final	Final			
Frac Gradient	.62	.77	.63	.51		
10 min S-I Pressure	1826	1624	1440	1196		
Material Volume						
Sand-sks						
Water-bbl						
SCF N <sub>2</sub>	927,870*	690,425	588,772			
Acid-gal	700 gal 7.5%	800 gal 7.7%	350 gal 15%	3000 gal 15%		
NOTES:						

TOP	BASE	FORMATION	REMARKS*
0	30	Cond	
30	78	Sand	
78	82	Coal	
82	91	Sand	
91	95	Coal	
95	575	Sand	
575	579	Coal	
579	675	Sand	
675	678	Coal	
678	764	Sand	
764	767	Coal	
767	807	Sand	
807	891	Sandy Shale	
891	952	Sand	
952	956	Coal	
956	1214	Sandy Shale	
1214	1887	Salt Sand	
2176	2275	U Maxton	Hole damp @ 1541'
2347	2490	M Maxton	GT @ 2008', 2568', 2693'=NS
2589	2634	L Maxton	
2674	2738	L Lime	
2747	3074	Big Lime	GT @ 2848', 3003', 3143', 3299'=NS
3157	3184	U Weir	
3214	3256	L Weir	
3590	3616	Sunbury	
3616	3649	Berea	
3928	3960	Gordon	GT @ 3703'=15 mcf, 3921', 4886', 5570'=21 mcf
4676	5136	L Huron	
5136	5500	Java/Angola	
5500	5754	Rhinestreet	
5754		Onondaga	
5770		TD	GT @ TD=15 mcf

