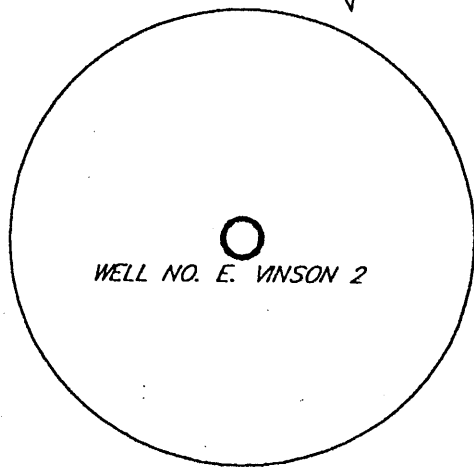
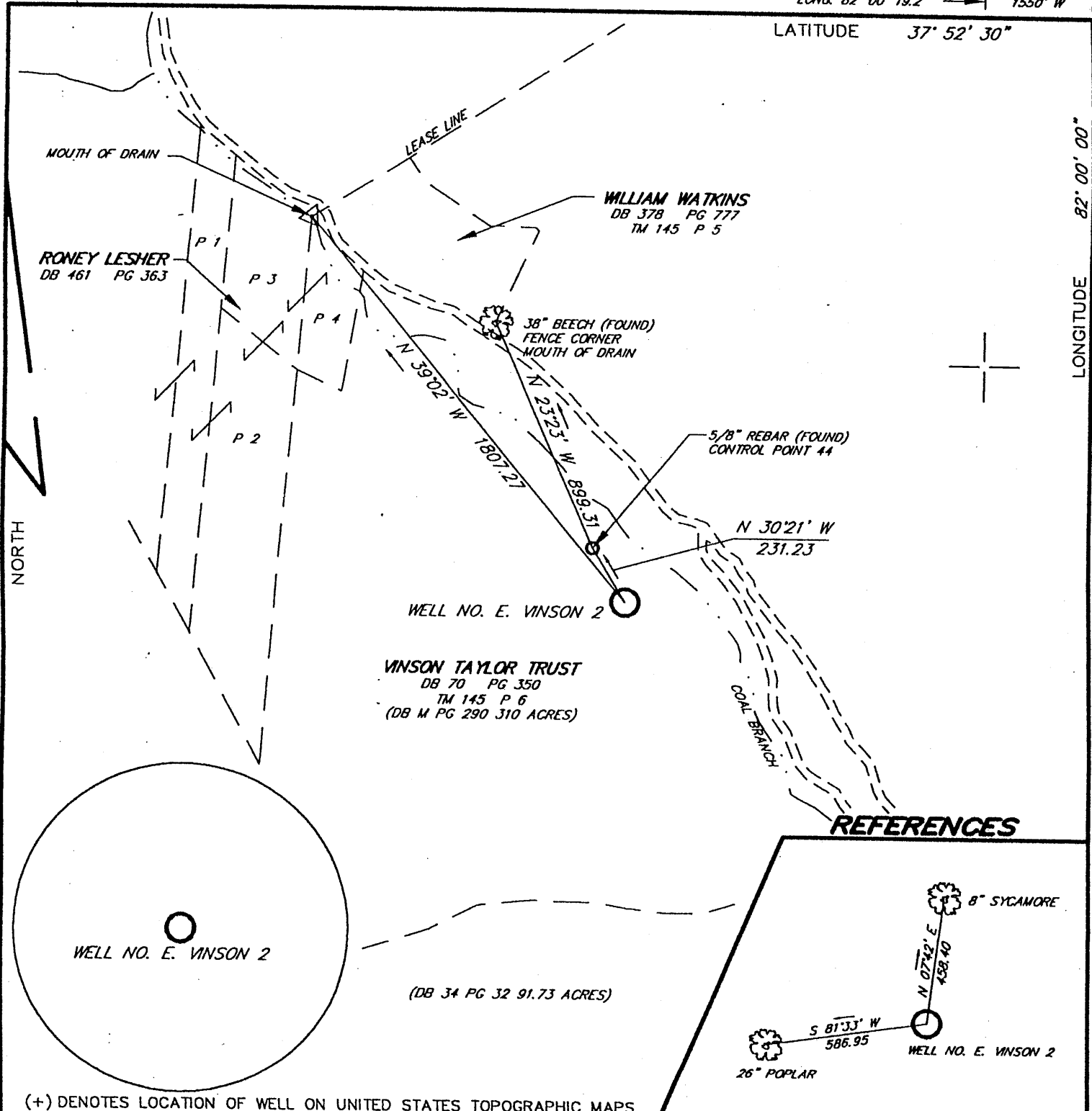


810 11/8/03

LONG. 82° 00' 19.2" → 1550' W

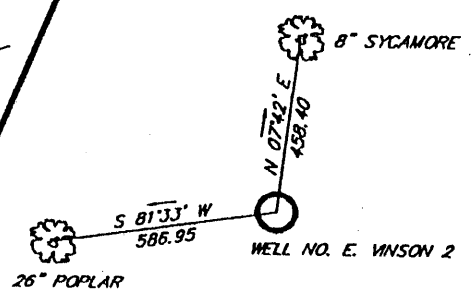
LATITUDE 37° 52' 30"



VINSON TAYLOR TRUST
 DB 70 PG 350
 TM 145 P 6
 (DB M PG 290 310 ACRES)

(DB 34 PG 32 91.73 ACRES)

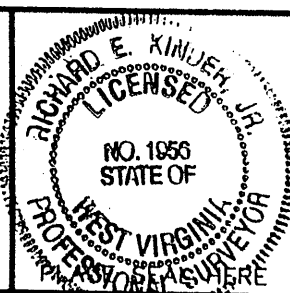
REFERENCES



(+) DENOTES LOCATION OF WELL ON UNITED STATES TOPOGRAPHIC MAPS

FILE NO. 01057
 DRAWING NO. _____
 SCALE 1" = 500'
 MINIMUM DEGREE OF ACCURACY 1 : 2500
 PROVEN SOURCE OF ELEVATION SPOT ON KNOB (1762)
SOUTHWEST OF LOCATION

I THE UNDERSIGNED, HEREBY CERTIFY THAT THIS PLAT IS CORRECT TO THE BEST OF MY KNOWLEDGE AND BELIEF AND SHOWS ALL THE INFORMATION REQUIRED BY LAW AND THE REGULATIONS ISSUED AND PRESCRIBED BY THE DEPARTMENT OF ENVIRONMENTAL PROTECTION.
 (SIGNED) _____
 R.P.E. _____ I.L.S. 1956



STATE OF WEST VIRGINIA
 DEPARTMENT OF ENVIRONMENTAL PROTECTION
OIL AND GAS DIVISION



DATE NOVEMBER 12, 2003
 OPERATOR'S WELL NO. E. VINSON NO. 2
 API WELL NO. _____
047-045-01602
 STATE COUNTY PERMIT

WELL TYPE: OIL ___ GAS ___ LIQUID INJECTION ___ WASTE DISPOSAL ___
 (IF "GAS,") PRODUCTION ___ STORAGE ___ DEEP ___ SHALLOW ___
 LOCATION: ELEVATION 966.5 WATERSHED COAL BRANCH
 DISTRICT ISLAND CREEK COUNTY LOGAN
 QUADRANGLE HOLDEN 7.5'

SURFACE OWNER VINSON TAYLOR TRUST ACREAGE 965.98
 OIL & GAS ROYALTY OWNER EDWIN N. VINSON ET AL. LEASE ACREAGE 1489
 LEASE NO. _____

PROPOSED WORK: DRILL ___ CONVERT ___ DRILL DEEPER ___ REDRILL ___ FRACTURE OR STIMULATE ___ PLUG OFF OLD FORMATION ___ PERFORATE NEW FORMATION ___ OTHER PHYSICAL CHANGE IN WELL (SPECIFY) _____

PLUG AND ABANDON ___ CLEAN OUT AND REPLUG ___
 TARGET FORMATION _____ ESTIMATED DEPTH _____
 WELL OPERATOR CABOT OIL & GAS CORPORATION DESIGNATED AGENT THOMAS S. LIBERATORE
 ADDRESS 900 LEE ST. E SUITE 1500 ADDRESS 900 LEE ST. E SUITE 500
CHARLESTON, WV 25301 CHARLESTON, WV 25301

FORM WW-6

LONGITUDE 82° 00' 00"

COUNTY NAME 166

PERMIT 1602

6-6 (274) Logan-Holden-Dinas

State of West Virginia
Division of Environmental Protection
Section of Oil and Gas
Well Operator's Report of Well Work

brp

Farm Name: Taylor - Vinson Trust Operator Well No.: E. Vinson #2

LOCATION: Elevation: 967' Quadrangle: Holden
District: Island Creek County: Logan
Latitude: 5100' feet South of 37° DEG. 52' MIN. 30" SEC.
Longitude: 1550' feet West of 82° DEG. 00' MIN. 00" SEC.

Company: Cabot Oil & Gas Corporation
900 Lee Street East, Suite 500
Charleston, WV 25301

Casing & Tubing Size	Used in Drilling	Left In Well	Cement Fill Up Cu. Ft.
13-3/8"	46	46	
9-5/8"	441	441	203
7"	1723	1723	338
4-1/2"		4039	295
Squeezed 4-1/2" Casing @ 2050			59
2-3/8"		3917	

Agent: Thomas S. Liberatore
Inspector: Ralph Triplett
Permit Issued: 12/16/2003
Well Work Commenced: March 25, 2004
Well Work Completed: April 18, 2004
Verbal Plugging: _____
Permission granted on: _____
Rotary X Cable _____
Total Depth (feet) 4088
Fresh Water Depths (ft) 466
Salt Water Depths (ft) 850
Is coal being mined in area (Y/N) ? Y
Coal Depths (ft) 187-192, 1185-1190

OPEN FLOW DATA

Producing Formation DEVONIAN SHALE Pay Zone _____
Depth (ft) 3580 - 3957
Gas: Initial Open Flow 40 MCF/d Oil: Initial Open Flow 0 Bbl/d
Final Open Flow 610 COMMINGLED MCF/d Final Open Flow 0 Bbl/d
Time of open flow between initial and final tests 9 Hours
Static rock pressure 380 psig surface pressure after 60 Hours

Second Producing Formation BEREA Pay Zone 2540 - 2550
INJUN Depth (ft) 2044 - 2066
Gas: Initial Open Flow ODOR MCF/d Oil: Initial Open Flow 0 Bbl/d
Final Open Flow 610 COMMINGLED MCF/d Final Open Flow 0 Bbl/d
Time of open flow between initial and final tests 9 Hours
Static rock pressure 380 psig surface pressure after 60 Hours

NOTE: ON BACK OF THIS FORM PUT THE FOLLOWING: 1.) DETAILS OF PERFORATED INTERVALS, FRACTURING OR STIMULATING, PHYSICAL CHANGE, ETC. 2.) THE WELL LOG WHICH IS SYSTEMATIC DETAILED GEOLOGICAL RECORD OF ALL FORMATIONS, INCLUDING COAL ENCOUNTERED BY THE WELLBORE

For: **CABOT OIL & GAS CORPORATION**

By: W. A. [Signature] Drilling Superintendent
Date: 4/28/04

RECEIVED
Office of Oil & Gas
Office of Chief
JUN 18 2004
WV Department of
Environmental Protection
JUN 25 2004

106 1602

STAGE	PERFS	ACID 15% HCl	FOAM	SAND (lbs)	NITROGEN (scf)	BDP	ATP	MTP	ISIP
1-Devonian Shale	3580-3957 (30)	300 gal.			800,000	1796	2467	3227	1514
2-Berea	2450-2550 (40)	500 gal.	75Q	45,600	275,000	1298	1382	1459	1275
3-Injun	2044-2066 (48)	500 gal.	75Q	45,500	220,000	1255	1336	1478	1348

<u>FORMATION</u>	<u>TOP</u>	<u>BOTTOM</u>	<u>REMARKS</u>
BREATHITT	SURFACE	680	
SALT SAND	680	1325	
PENNINGTON	1325	1728	
LITTLE LIME	1728	1780	
BIG LIME	1780	1994	
INJUN	1994	2069	
BORDEN SHALE	2069	2510	
WEIR	2140	2200	
COFFEE SHALE ? Beres?	2510	2539	
DEVONIAN SHALE	2539	2553	
	2553	4088	TD

2960
 947
 3867