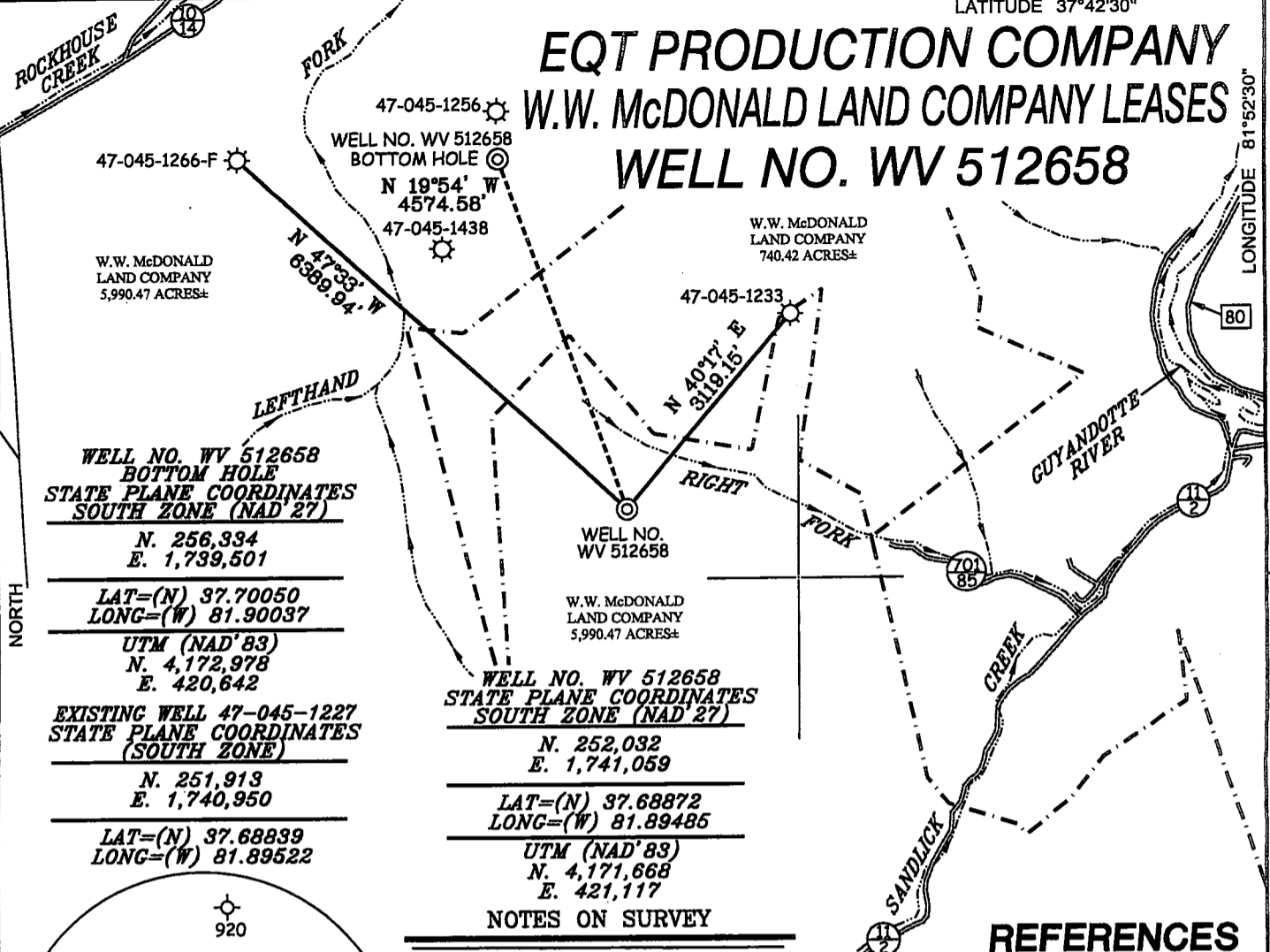


# EQT PRODUCTION COMPANY W.W. McDONALD LAND COMPANY LEASES WELL NO. WV 512658



**WELL NO. WV 512658  
BOTTOM HOLE  
STATE PLANE COORDINATES  
SOUTH ZONE (NAD 27)**

N. 256,334  
E. 1,739,501

LAT=(N) 37.70050  
LONG=(W) 81.90037

UTM (NAD'83)  
N. 4,172,978  
E. 420,642

EXISTING WELL 47-045-1227  
STATE PLANE COORDINATES  
(SOUTH ZONE)

N. 251,913  
E. 1,740,950

LAT=(N) 37.68839  
LONG=(W) 81.89522

**WELL NO. WV 512658  
STATE PLANE COORDINATES  
SOUTH ZONE (NAD 27)**

N. 252,032  
E. 1,741,059

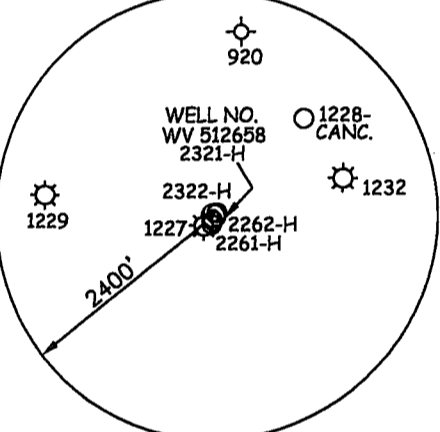
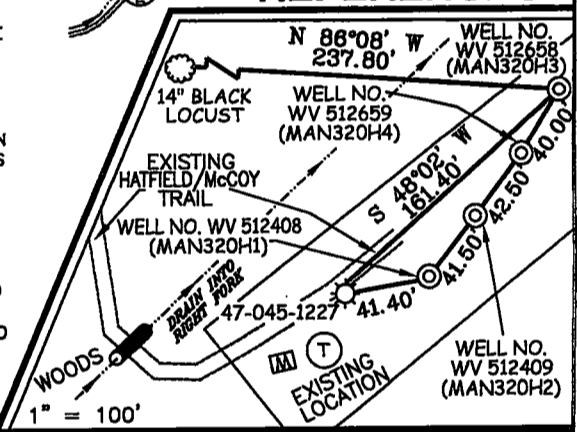
LAT=(N) 37.68872  
LONG=(W) 81.89485

UTM (NAD'83)  
N. 4,171,668  
E. 421,117

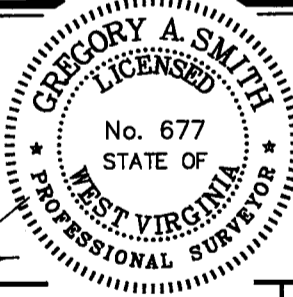
### NOTES ON SURVEY

1. TIES TO WELLS AND CORNERS ARE BASED ON GRID NORTH FOR THE WV STATE PLANE COORDINATE SYSTEM SOUTH ZONE NAD '27.
2. TIES TO REFERENCES ARE BASED ON MAGNETIC NORTH 08/18/09.
3. LEASE BOUNDARY SHOWN HEREON TAKEN FROM A PLAT DATED JANUARY 02, 1997 AS PREPARED BY SLS FOR A.P.I. NO. 47-045-1237.
4. SURFACE OWNER AND ADJOINER INFORMATION TAKEN FROM THE ASSESSOR AND COUNTY CLERK RECORDS OF LOGAN COUNTY IN JULY, 2009.
5. WELL LAT./LONG. (NAD'27) ESTABLISHED BY DGPS (SUBMETER MAPPING GRADE).
6. ORIGINAL PLAT DATED 09/11/09 REVISED 03/10/10 TO EXTEND HORIZONTAL LEG & CHANGE BOTTOM HOLE COORDINATES, ETC. PLAT REVISED 6/29/10 TO SWITCH TOP HOLE SITE WITH WV 512659.

### REFERENCES



I THE UNDERSIGNED, HEREBY CERTIFY THAT THIS PLAT IS CORRECT TO THE BEST OF MY KNOWLEDGE AND BELIEF AND SHOWS ALL THE INFORMATION REQUIRED BY LAW AND THE REGULATIONS ISSUED AND PRESCRIBED BY THE DIVISION OF ENVIRONMENTAL PROTECTION.



(+) DENOTES LOCATION OF WELL ON UNITED STATES TOPOGRAPHIC MAPS.

DATE JUNE 29, 20 10

OPERATORS WELL NO. WV 512658

API WELL NO. 47-045-02321H

STATE COUNTY PERMIT

**CANCELLED** Revised

MINIMUM DEGREE OF ACCURACY 1/2500 FILE NO. 3850P512658R2 (283-60)

PROVEN SOURCE OF ELEVATION DGPS (SUBMETER MAPPING GRADE) SCALE 1" = 2,000'

STATE OF WEST VIRGINIA  
DIVISION OF ENVIRONMENTAL PROTECTION  
OFFICE OF OIL AND GAS

WELL TYPE: OIL  GAS  INJECTION  LIQUID WASTE DISPOSAL  IF "GAS" PRODUCTION  STORAGE  DEEP  SHALLOW

LOCATION: ELEVATION 1,432' WATERSHED RIGHT FORK OF SANDLICK CREEK

DISTRICT TRIADELPHIA COUNTY LOGAN QUADRANGLE MAN 7.5'

SURFACE OWNER W.W. McDONALD LAND COMPANY ACREAGE 5,990.47±

ROYALTY OWNER W.W. McDONALD LAND COMPANY LEASE ACREAGE 8,890.505± & 1,537.52±

PROPOSED WORK: DRILL  CONVERT  DRILL DEEPER  REDRILL  FRACTURE OR STIMULATE  PLUG OFF OLD

FORMATION  PERFORATE NEW FORMATION  PLUG AND ABANDON  CLEAN OUT AND REPLUG  OTHER

PHYSICAL CHANGE IN WELL (SPECIFY) \_\_\_\_\_ TARGET FORMATION LOWER HURON/SILTSTONE

ESTIMATED DEPTH 4,860' (TOTAL VERTICAL DEPTH)

WELL OPERATOR EQT PRODUCTION COMPANY DESIGNATED AGENT REX C. RAY

ADDRESS 1710 PENNSYLVANIA AVENUE CHARLESTON, WV 25302 ADDRESS 1710 PENNSYLVANIA AVENUE CHARLESTON, WV 25302