

COLE AND CRANE REAL ESTATE TRUST LEASE

13,292.15 ACRES ±

WELL NO. WV 512116

COLE AND CRANE REAL ESTATE TRUST
P/O 2,686.24 ACRES ±

CHESTNUT OAK & HICKORY IN LOW GAP (CALLED FOR)

BOTTOM HOLE WELL NO. WV 512116

WELL NO. WV 512116

47-045-0770

NOTES ON SURVEY

1. TIES TO WELLS AND CORNERS ARE BASED ON GRID NORTH FOR THE WV STATE PLANE COORDINATE SYSTEM SOUTH ZONE NAD '27.
2. TIES TO REFERENCES ARE BASED ON MAGNETIC NORTH 12/03/09.
3. LEASE BOUNDARY SHOWN HEREON TAKEN FROM A MAP SHOWING "PROPERTY OF COLE AND CRANE REAL ESTATE TRUST" DATED JANUARY 1925 BY W.C. McCALL, ENGINEER.
4. SURFACE OWNER AND ADJOINER INFORMATION TAKEN FROM THE ASSESSOR AND COUNTY CLERK RECORDS OF LOGAN COUNTY IN JULY, 2010.
5. WELL LAT./LONG. (NAD'27) ESTABLISHED BY DGPS(SUBMETER MAPPING GRADE).

Cancelled

EXISTING WELL 47-045-1536
STATE PLANE COORDINATES
SOUTH ZONE (NAD'27)

N. 266,921
E. 1,690,294

LAT=(N) 37.72813
LONG=(W) 82.07086

BOTTOM HOLE WELL NO. WV 512116
STATE PLANE COORDINATES
SOUTH ZONE (NAD'27)

N. 271,972
E. 1,685,452

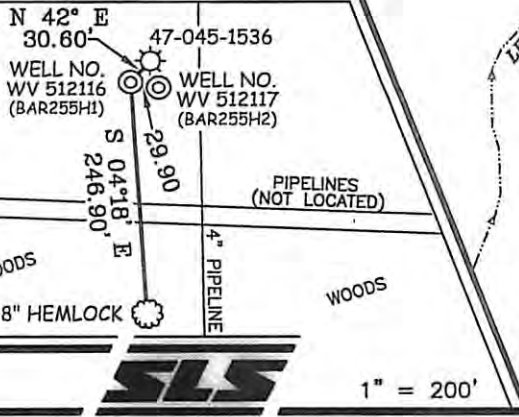
LAT=(N) 37.74185
LONG=(W) 82.08781

UTM (NAD'83)
N. 4,177,741
E. 404,172

FUND 8 DOMESTIC LLC
111.20 ACRES ±
(SURFACE)

COLE AND CRANE REAL ESTATE TRUST
19,801.944 ACRES ±
(SURFACE)

REFERENCES



WELL NO. WV 512116
STATE PLANE COORDINATES
SOUTH ZONE (NAD'27)

N. 266,898
E. 1,690,274

LAT=(N) 37.72807
LONG=(W) 82.07093

UTM (NAD'83)
N. 4,176,195
E. 405,641

I THE UNDERSIGNED, HEREBY CERTIFY THAT THIS PLAT IS CORRECT TO THE BEST OF MY KNOWLEDGE AND BELIEF AND SHOWS ALL THE INFORMATION REQUIRED BY LAW AND THE REGULATIONS ISSUED AND PRESCRIBED BY THE DIVISION OF ENVIRONMENTAL PROTECTION.

P.S. 677 *Gregory A. Smith*



(+) DENOTES LOCATION OF WELL ON UNITED STATES TOPOGRAPHIC MAPS.
 DATE AUGUST 27, 20 10
 OPERATORS WELL NO. WV 512116
 API WELL NO. 47-045-023824
 STATE COUNTY PERMIT

MINIMUM DEGREE OF ACCURACY 1/2500 FILE NO. 3796P512116 (289-45)
 PROVEN SOURCE OF ELEVATION DGPS (SUBMETER MAPPING GRADE) SCALE 1" = 2000'

STATE OF WEST VIRGINIA
 DIVISION OF ENVIRONMENTAL PROTECTION
 OFFICE OF OIL AND GAS



WELL TYPE: OIL GAS LIQUID INJECTION WASTE DISPOSAL IF "GAS" PRODUCTION STORAGE DEEP SHALLOW

LOCATION: ELEVATION 1,297' WATERSHED LEFT FORK OF PINE CREEK

DISTRICT ISLAND CREEK COUNTY LOGAN QUADRANGLE BARNABUS 7.5'

SURFACE OWNER COLE & CRANE REAL ESTATE TRUST ACREAGE 19,801.944±

ROYALTY OWNER COLE & CRANE REAL ESTATE TRUST LEASE ACREAGE 13,292.15±

PROPOSED WORK: LEASE NO. 080574

DRILL CONVERT DRILL DEEPER REDRILL FRACTURE OR STIMULATE PLUG OFF OLD

FORMATION PERFORATE NEW FORMATION PLUG AND ABANDON CLEAN OUT AND REPLUG OTHER

PHYSICAL CHANGE IN WELL (SPECIFY) _____ TARGET FORMATION LOWER HURON
 ESTIMATED DEPTH 4,800' (TOTAL VERTICAL DEPTH)

WELL OPERATOR EQT PRODUCTION COMPANY DESIGNATED AGENT REX C. RAY
 ADDRESS 1710 PENNSYLVANIA AVE ADDRESS 1710 PENNSYLVANIA AVE
CHARLESTON, WV 25302 CHARLESTON, WV 25302