



West Virginia Department of Environmental Protection
Office of Oil and Gas
WELL LOCATION FORM: GPS

API: 47-049-00427 - P WELL NO.: WV 655826 (1353)

FARM NAME: Haught

RESPONSIBLE PARTY NAME: EQT Production Company, Inc.

COUNTY: Marion DISTRICT: Paw Paw

QUADRANGLE: Grant Town 7.5'

SURFACE OWNER: Naomi Nebera

ROYALTY OWNER: E. T. Bluegrass Apollo Division

UTM GPS NORTHING: 4382422

UTM GPS EASTING: 565500 GPS ELEVATION: 341 m (1119 ft)

The Responsible Party named above has chosen to submit GPS coordinates in lieu of preparing a new well location plat for a plugging permit or assigned API number on the above well. The Office of Oil and Gas will not accept GPS coordinates that do not meet the following requirements:

1. Datum: NAD 1983, Zone: 17 North, Coordinate Units: meters, Altitude: height above mean sea level (MSL) – meters.
2. Accuracy to Datum – 3.05 meters
3. Data Collection Method:
Survey grade GPS : Post Processed Differential
Real-Time Differential
Mapping Grade GPS : Post Processed Differential
Real-Time Differential
4. Letter size copy of the topography map showing the well location.

I the undersigned, hereby certify this data is correct to the best of my knowledge and belief and shows all the information required by law and the regulations issued and prescribed by the Office of Oil and Gas.

Ben B. Slaughter P.S.
Signature Title
7-21-09
Date

RECEIVED
Office of Oil & Gas
APR 08 2010
West Virginia Department of
Environmental Protection

Topo Quad: Grant Town 7.5'

Scale: 1" = 2000'

County: Marion

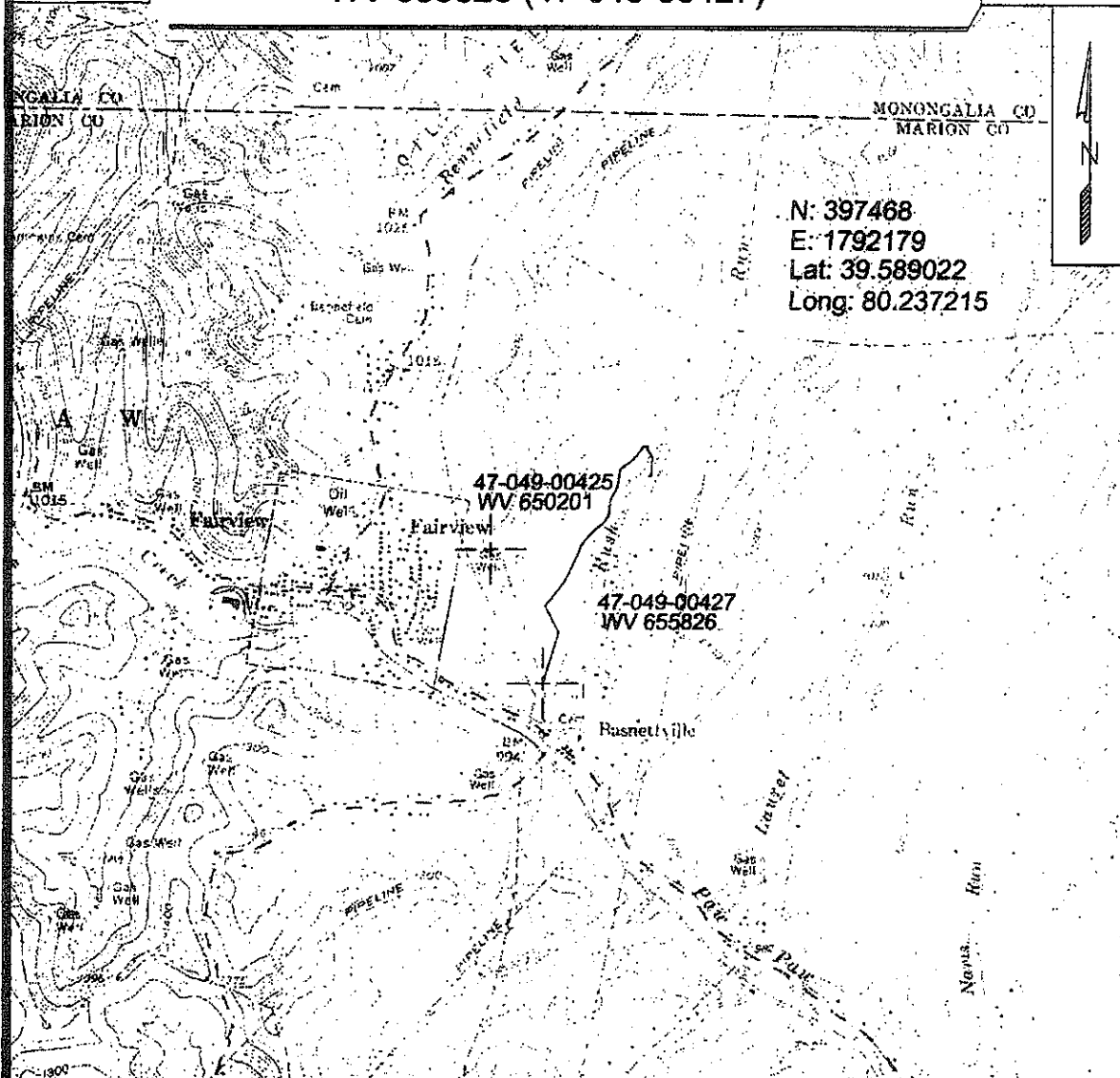
Date: July 16, 2009 49-00427P

District: Paw Paw

Project No: 74-18-00-08

WV 655826 (47-049-00427)

Topo



N: 397468
 E: 1792179
 Lat: 39.589022
 Long: 80.237215



SURVEYING AND MAPPING SERVICES PERFORMED BY:
ALLEGHENY SURVEYS, INC.
 1-800-482-8606
 P.O. BOX 438
 BIRCH RIVER, WV 26610
 PH: (304) 649-8606
 FAX: (304) 649-8608

PREPARED FOR:

EQT Production Co. Inc.
 1710 Pennsylvania Ave.
 Charleston, WV 25302

RECEIVED
 Office of Oil & Gas

APR 05 2012

WV Department of
 Environmental Protection