

WW-7
8-30-06




West Virginia Department of Environmental Protection
Office of Oil and Gas
WELL LOCATION FORM: GPS

API: 4704900921 WELL NO.: EA Blackshere 12
FARM NAME: EA Blackshere
RESPONSIBLE PARTY NAME: Diversified Production, LLC
COUNTY: Marion DISTRICT: Mannington
QUADRANGLE: Mannington 7.5'
SURFACE OWNER: Larry E. & Gabriele E. Frye
ROYALTY OWNER: Clarence A. Sams
UTM GPS NORTHING: 4378427.73
UTM GPS EASTING: 558650.50 GPS ELEVATION: 1269.28'

The Responsible Party named above has chosen to submit GPS coordinates in lieu of preparing a new well location plat for a plugging permit or assigned API number on the above well. The Office of Oil and Gas will not accept GPS coordinates that do not meet the following requirements:

- Datum: NAD 1983, Zone: 17 North, Coordinate Units: meters, Altitude: height above mean sea level (MSL) – meters.
- Accuracy to Datum – 3.05 meters
- Data Collection Method:
Survey grade GPS : Post Processed Differential
Real-Time Differential
Mapping Grade GPS : Post Processed Differential
Real-Time Differential
- Letter size copy of the topography map showing the well location.**

I the undersigned, hereby certify this data is correct to the best of my knowledge and belief and shows all the information required by law and the regulations issued and prescribed by the Office of Oil and Gas.


Signature

Chris Veazey - Permitting Supervisor
Title

01/23/24
Date

RECEIVED
Office of Oil and Gas

JAN 29 2024

WV Department of
Environmental Protection



Diversified Gas & Oil Corporation
 100 Diversified Way
 Pikeville KY, 41051

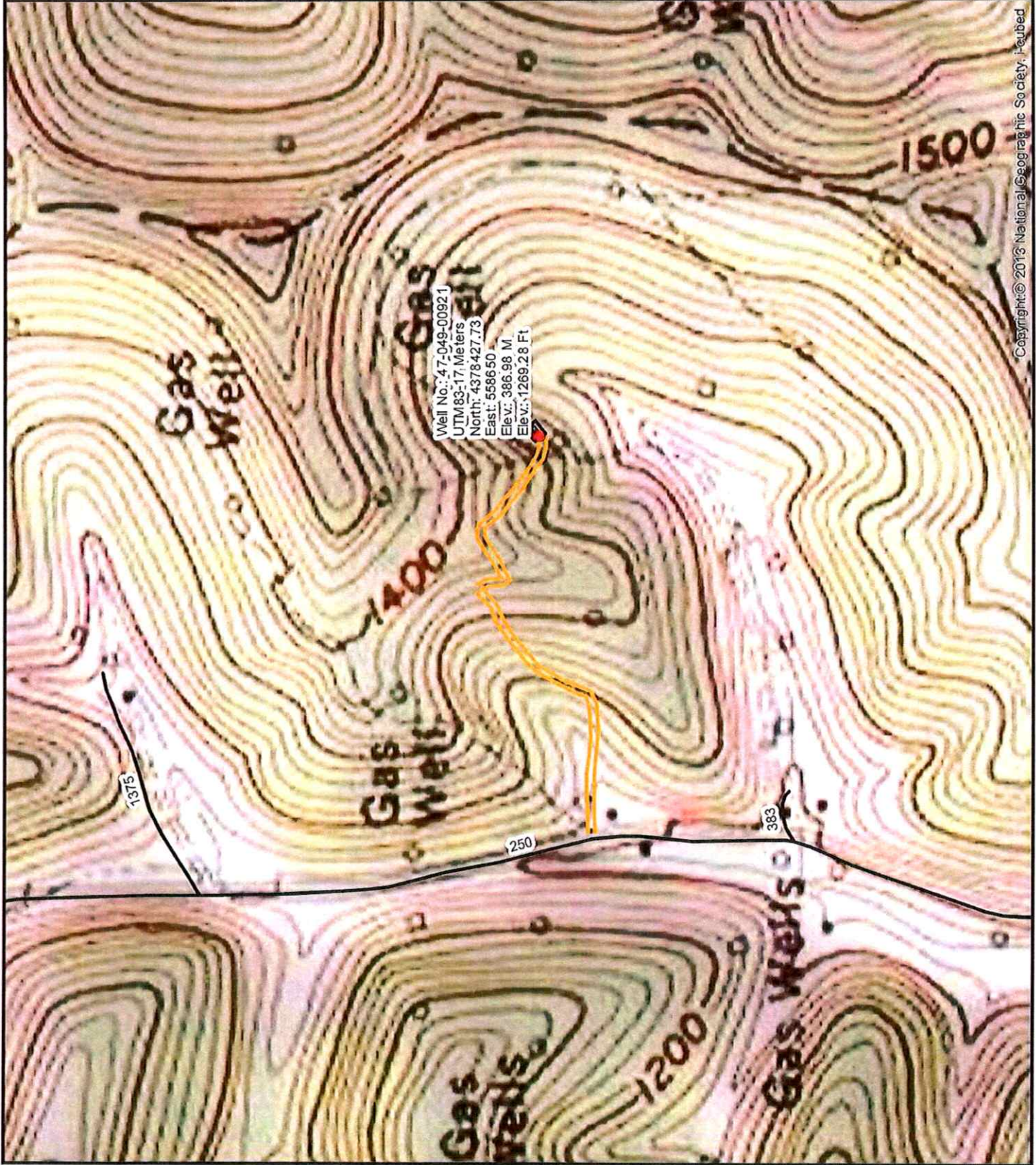
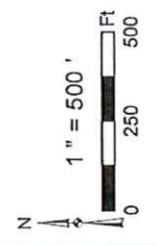
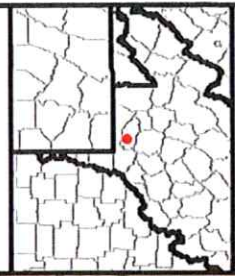
47-049-00921

Plugging Map

Legend

- Well
- Access Road
- Pits
- Pad
- Public Roads

RECEIVED
 Office of Oil and Gas
JAN 29 2024
 WV Department of
 Environmental Protection



Copyright © 2018 National Geographic Society, Inc.