



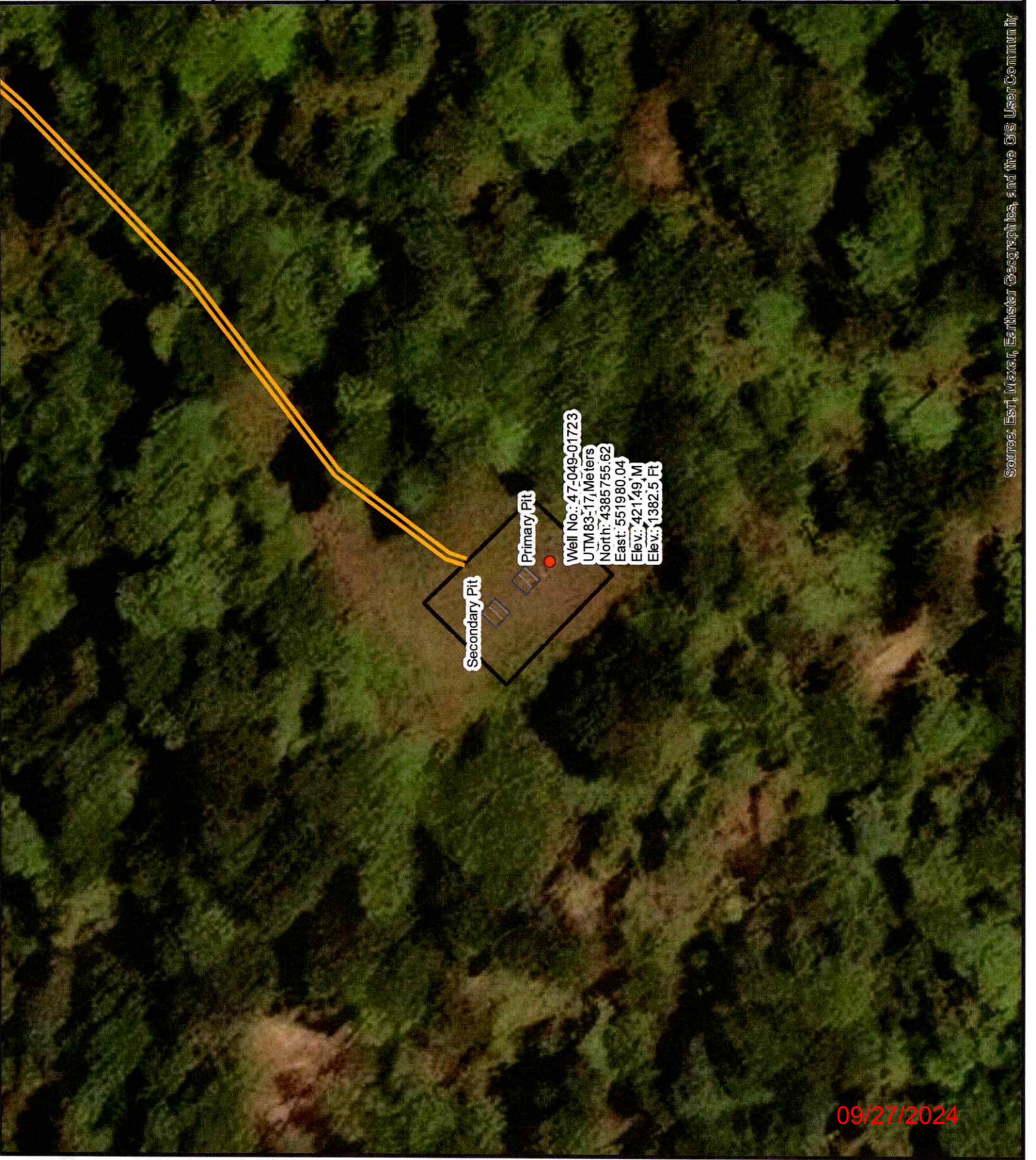
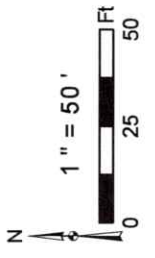
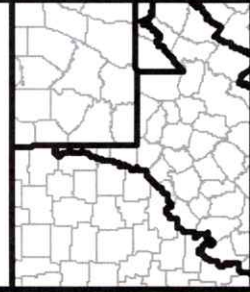
Diversified Gas & Oil Corporation
100 Diversified Way
Pheville KY, 41051

47-049-01723

Well Plugging Map

Legend

- Well
- Access Road
- Pits
- Pad
- Public Roads



Sources: Esri, Maxar, Earthstar Geographics, and the GIS User Community

09/27/2024



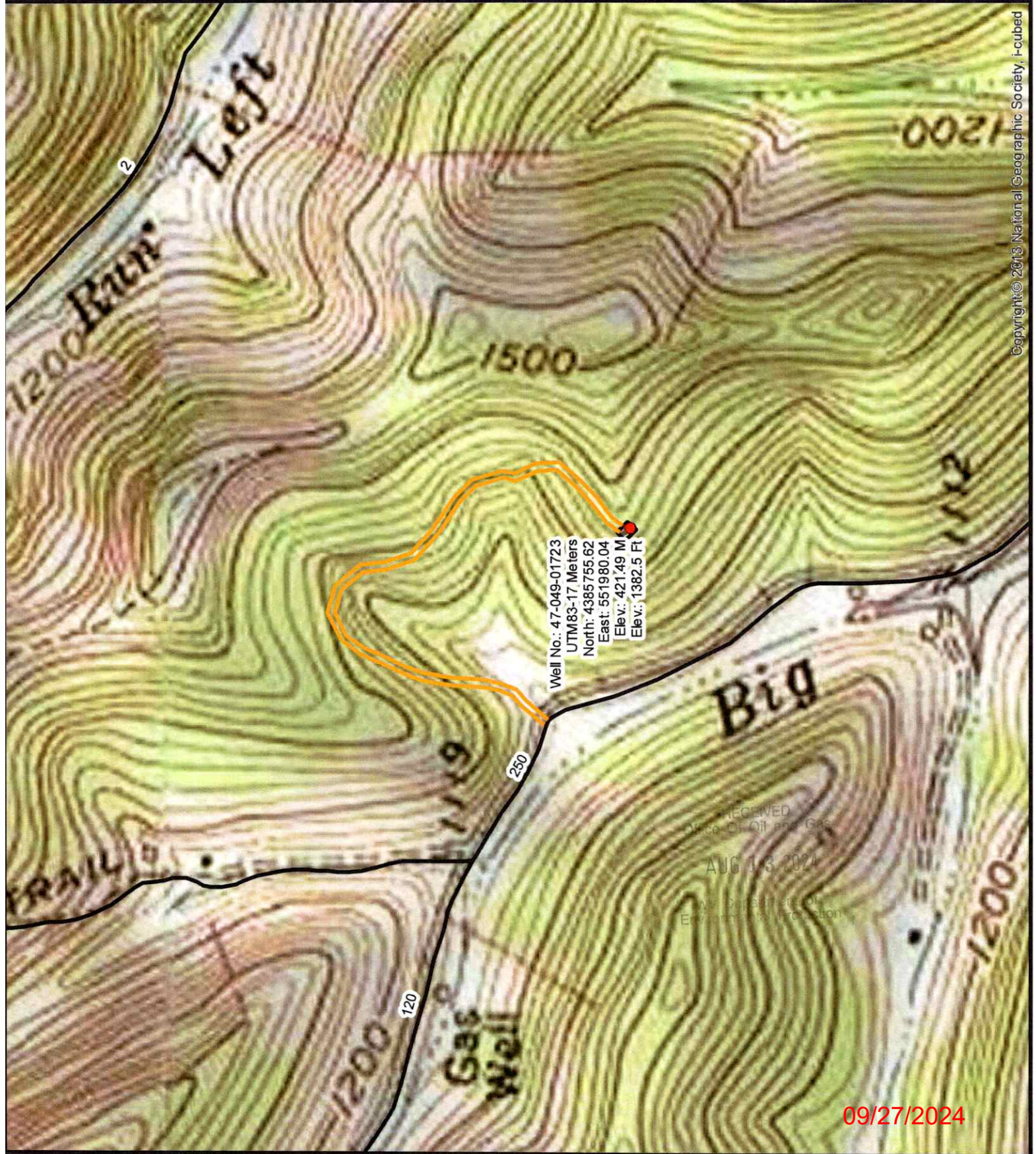
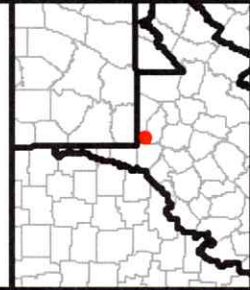
Diversified Gas & Oil Corporation
 100 Diversified Way
 Pheville KY, 41051

47-049-01723

Well Plugging Map

Legend

- Well
- Access Road
- ▨ Pits
- Pad
- Public Roads



WW-7
8-30-06



West Virginia Department of Environmental Protection
Office of Oil and Gas
WELL LOCATION FORM: GPS

API: 4704901723 WELL NO.: 6-D-1

FARM NAME: Postlewait

RESPONSIBLE PARTY NAME: Diversified Production, LLC

COUNTY: Marion DISTRICT: Mannington

QUADRANGLE: Mannington 7.5'

SURFACE OWNER: Carl A. & Charlotte S. Postlewait

ROYALTY OWNER: Carl A. & Charlotte Postletwait

UTM GPS NORTHING: 4385755.62

UTM GPS EASTING: 551980.04 GPS ELEVATION: 1382.5'

The Responsible Party named above has chosen to submit GPS coordinates in lieu of preparing a new well location plat for a plugging permit or assigned API number on the above well. The Office of Oil and Gas will not accept GPS coordinates that do not meet the following requirements:

- Datum: NAD 1983, Zone: 17 North, Coordinate Units: meters, Altitude: height above mean sea level (MSL) – meters.
- Accuracy to Datum – 3.05 meters
- Data Collection Method:

Survey grade GPS : Post Processed Differential
Real-Time Differential

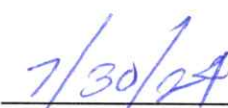
Mapping Grade GPS : Post Processed Differential
Real-Time Differential

- Letter size copy of the topography map showing the well location.**

I the undersigned, hereby certify this data is correct to the best of my knowledge and belief and shows all the information required by law and the regulations issued and prescribed by the Office of Oil and Gas.


Signature

Chris Veazey - Director of Administration
Title


Date

09/27/2024

RECEIVED
Office Of Oil and Gas
AUG 13 2024
WV Department of
Environmental Protection