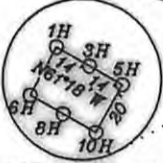
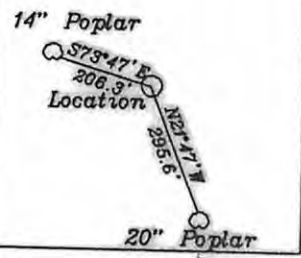
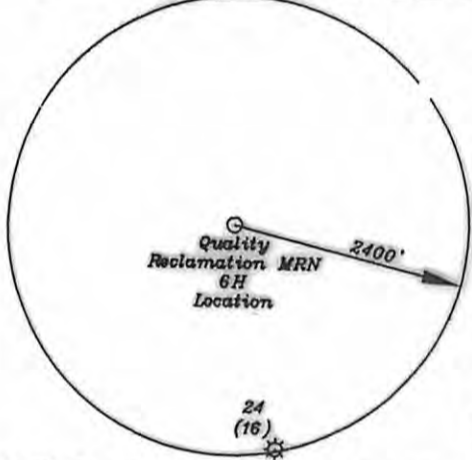


References



- A2- American Bituminous Power 126.8 Ac. TM.27-42
- R- Consolidation Coal Co. 6 Ac. TM.26-8
- S- Bragg 21.954 Ac. TM.26-9 & 10
- T- M.Bragg 3.02 Ac. TM.26-9.1 & 9.2
- U- Moore 2o Ac. TM.27-13
- V- Robbins 9.47 Ac. TM.27-17
- W- Horizon Ventures WV Inc. 41.74 Ac. p/o TM. 27A-1
- X- Monongahela Power Co. 1.79 Ac. TM.27A-3
- Y- Horizon Ventures WV Inc. 39.39 Ac. p/o TM. 27A-1
- Z- American Bituminous Power 35 Ac. TM. 27-33

NUMBER	DIRECTION	DISTANCE
L1	S64°29'W	1,007.8'
L2	N61°36'W	879.1'
L3	N27°00'W	1,815.1'
L4	S18°24'E	500.0'



Top Hole
NAD 27-39.573304 N, 80.161412 W
UTM NAD 83 (meters)-4380745.0 N, 572043.0 E
State Plane NAD 27-391606.5 N, 1813556.5 E

KOP
NAD 27-39.573393 N, 80.165199 W
UTM NAD 83 (meters)-4380751.8 N, 571717.6 E
State Plane NAD 27-391646.8 N, 1812489.3 E

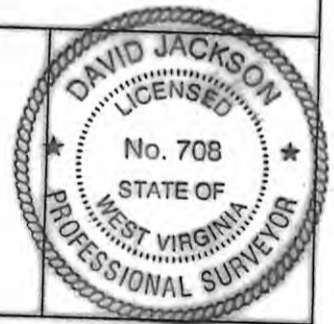
Bottom Hole
NAD 27-39.555202 N, 80.157189 W
UTM NAD 83 (meters)-4378739.4 N, 572424.4 E
State Plane NAD 27-385004.5 N, 1814698.5 E

Notes: Ties to wells and corners are based on State Plane Grid North-WV North Zone NAD 27.

FILE NO. _____
DRAWING NO. 1
SCALE 1" = 2000'
MINIMUM DEGREE OF ACCURACY 1 in 2500
PROVEN SOURCE OF ELEVATION GPS
submeter unit

I THE UNDERSIGNED, HEREBY CERTIFY THAT THIS PLAT IS CORRECT TO THE BEST OF MY KNOWLEDGE AND BELIEF AND SHOWS ALL THE INFORMATION REQUIRED BY LAW AND THE REGULATIONS ISSUED AND PRESCRIBED BY THE DEPARTMENT OF ENERGY.

(SIGNED) David L Jackson
R.P.E. _____ L.L.S. 708



STATE OF WEST VIRGINIA
Division of Environmental Protection
OFFICE OF OIL AND GAS

DATE March 29, 2012
OPERATOR'S WELL NO. Quality Reclamation MRN 6H
API WELL NO. _____

WELL TYPE: OIL ___ GAS X LIQUID INJECTION ___ WASTE DISPOSAL ___
(IF "GAS") PRODUCTION X STORAGE ___ DEEP ___ SHALLOW X
LOCATION: ELEVATION 1229.6' WATER SHED Arnett Run
DISTRICT Paw Paw COUNTY Marion
QUADRANGLE Grant Town 7 1/2'
SURFACE OWNER Quality Reclamation ACREAGE 226.071 ac.
OIL & GAS ROYALTY OWNER James W. Ice et al LEASE ACREAGE 427.004 ac
LEASE NO. 1-244449-001 & 002 (TM.23/3), FA022997-0001 (TM.27/31, 31.1 & 33 - TM 27A/1 Tract W), 1-303134-001 & 002 (TM.27A/1 Tracts Y & A1), 1-290215-001 thru 004 (TM 27/42)

CANCELLED

PROPOSED WORK: DRILL X CONVERT ___ DRILL DEEPER ___ REDRILL ___ FRACTURE OR STIMULATE ___ PLUG OFF OLD FORMATION ___ PERFORATE NEW FORMATION X OTHER PHYSICAL CHANGE IN WELL (SPECIFY) _____
PLUG AND ABANDON ___ C.EAN OUT AND REPLUG ___
TARGET FORMATION Marcellus ESTIMATED DEPTH 7550'+ Horizontal Leg
WELL OPERATOR Chesapeake Appalachia, L.L.C. DESIGNATED AGENT Eric B. Gillespie
ADDRESS P.O. Box 18496 Oklahoma City, OK 73154-0496 ADDRESS P.O. Box 6070 Charleston, WV 25362