

Actual Wellpath Report

Wright 2H AWP Proj: 12992'

Page 1 of 8



REFERENCE WELLPATH IDENTIFICATION

Operator	TRANS ENERGY Inc.	Slot	Slot 02
Area	Marion County, WV	Well	Wright 2H
Field	Marion	Wellbore	Wright 2H AWB
Facility	Wright Pad		

REPORT SETUP INFORMATION

Projection System	NAD27 / Lambert West Virginia SP, Northern Zone (4701), US feet	Software System	WellArchitect® 4.0.1
North Reference	Grid	User	Stewdenk
Scale	0.999941	Report Generated	12/1/2014 at 1:50:53 PM
Convergence at slot	0.60° West	Database Source file	WA_Eastern/Wright_2H_AWB.xml

WELLPATH LOCATION

	Local coordinates		Grid coordinates		Geographic coordinates	
	North[ft]	East[ft]	Easting[US ft]	Northing[US ft]	Latitude	Longitude
Slot Location	2.72	-14.76	1735579.51	397672.63	39° 35' 16.987" N	80° 26' 17.679" W
Facility Reference Pt			1735594.27	397669.91	39° 35' 16.962" N	80° 26' 17.490" W
Field Reference Pt			1738625.59	396770.37	39° 35' 08.382" N	80° 25' 38.652" W

WELLPATH DATUM

Calculation method	Minimum curvature	H&P 285 (KB) to Facility Vertical Datum	1522.00ft
Horizontal Reference Pt	Slot	H&P 285 (KB) to Mean Sea Level	1522.00ft
Vertical Reference Pt	H&P 285 (KB)	H&P 285 (KB) to Mud Line at Slot (Slot 02)	29.00ft
MD Reference Pt	H&P 285 (KB)	Section Origin	N 0.00, E 0.00 ft
Field Vertical Reference	Mean Sea Level	Section Azimuth	350.00°

RECEIVED
Office of Oil and Gas

AUG 30 2017

WV Department of
Environmental Protection

Actual Wellpath Report

Wright 2H AWP Proj: 12992'

Page 2 of 8



OPERATING WELL PATH DATA COLLECTION

Operator	TRANS ENERGY Inc.	Slot	Slot 02
Area	Marion County, WV	Well	Wright 2H
Field	Marion	Wellbore	Wright 2H AWP
Facility	Wright Pad		

WELLPATH DATA (174 stations) † = interpolated/extrapolated station															
MD [ft]	Inclination [°]	Azimuth [°]	TYD [ft]	Vert Sect [ft]	North [ft]	East [ft]	Grid East [US ft]	Grid North [US ft]	Latitude	Longitude	Closure Dist [ft]	Closure Dir [°]	DLS [°/100ft]	Build Rate [°/100ft]	Turn Rate [°/100ft]
0.00†	0.000	161.270	0.00	0.00	0.00	0.00	1735579.51	397672.63	39°35'16.987"N	80°26'17.679"W	0.00	0.000	0.00	0.00	0.00
29.00	0.000	161.270	29.00	0.00	0.00	0.00	1735579.51	397672.63	39°35'16.987"N	80°26'17.679"W	0.00	0.000	0.00	0.00	0.00
1281.00	0.370	161.270	1280.99	-4.00	-3.83	1.30	1735580.81	397668.80	39°35'16.949"N	80°26'17.661"W	4.04	161.270	0.03	0.03	0.00
1509.00	0.970	189.370	1508.99	-4.31	-4.15	1.29	1735580.80	397668.48	39°35'16.946"N	80°26'17.662"W	4.34	162.743	2.38	2.14	100.36
1543.00	2.070	193.990	1542.98	-5.14	-5.03	1.09	1735580.60	397667.60	39°35'16.958"N	80°26'17.664"W	5.15	167.733	3.25	3.24	13.59
1374.00	3.380	196.460	1373.94	-6.47	-6.45	0.70	1735580.21	397666.18	39°35'16.923"N	80°26'17.669"W	6.49	173.813	4.24	4.23	7.97
1403.00	4.370	198.940	1402.87	-8.20	-8.31	0.10	1735579.61	397664.32	39°35'16.905"N	80°26'17.676"W	8.31	179.324	3.46	3.41	8.55
1457.00	4.620	197.690	1456.77	-10.55	-10.84	-0.74	1735578.77	397661.79	39°35'16.880"N	80°26'17.687"W	10.87	183.896	0.79	0.74	-3.68
1469.00	4.880	196.280	1468.66	-12.91	-13.38	-1.51	1735578.00	397659.25	39°35'16.855"N	80°26'17.696"W	13.46	186.447	0.89	0.81	-4.41
1498.00	4.680	197.380	1497.56	-15.07	-15.69	-2.21	1735577.30	397656.94	39°35'16.832"N	80°26'17.705"W	15.84	188.021	0.76	-0.69	3.79
1533.00	4.740	195.080	1532.44	-17.64	-18.45	-3.01	1735576.50	397654.18	39°35'16.804"N	80°26'17.715"W	18.69	189.277	0.57	0.17	-6.57
1564.00	5.310	196.160	1563.32	-20.09	-21.06	-3.75	1735575.76	397651.57	39°35'16.779"N	80°26'17.724"W	21.39	190.084	1.86	1.84	3.48
1592.00	5.700	194.400	1591.19	-22.52	-23.65	-4.45	1735575.06	397648.98	39°35'16.753"N	80°26'17.732"W	24.07	190.660	1.52	1.39	-6.29
1686.00	5.970	191.660	1684.71	-31.32	-32.96	-6.60	1735572.91	397639.67	39°35'16.661"N	80°26'17.758"W	33.62	191.524	0.41	0.29	-2.91
1781.00	6.540	191.360	1779.16	-40.79	-42.94	-8.63	1735570.88	397629.69	39°35'16.562"N	80°26'17.783"W	43.80	191.366	0.39	0.39	-0.32
1876.00	6.720	187.860	1873.54	-50.97	-53.59	-10.43	1735569.08	397619.04	39°35'16.456"N	80°26'17.805"W	54.60	191.009	0.58	0.40	-3.68
1970.00	6.250	184.940	1966.94	-61.13	-64.12	-11.62	1735567.89	397608.51	39°35'16.352"N	80°26'17.818"W	65.17	190.269	0.63	-0.52	-3.11
2064.00	6.070	176.980	2060.40	-70.99	-74.17	-11.79	1735567.72	397598.47	39°35'16.253"N	80°26'17.819"W	75.10	189.036	0.92	-0.17	-8.47
2159.00	6.790	183.610	2154.81	-81.44	-84.79	-11.88	1735567.63	397587.85	39°35'16.148"N	80°26'17.819"W	85.62	187.979	1.09	0.76	6.98
2253.00	6.600	171.860	2248.17	-92.24	-95.68	-11.47	1735568.04	397576.95	39°35'16.040"N	80°26'17.812"W	96.37	186.833	1.47	-0.20	-12.50
2347.00	3.240	161.250	2341.81	-100.26	-103.55	-9.85	1735569.66	397569.09	39°35'15.963"N	80°26'17.791"W	104.02	185.434	3.69	-3.57	-11.29
2442.00	2.330	130.940	2436.70	-104.42	-107.36	-7.53	1735571.98	397565.28	39°35'15.925"N	80°26'17.760"W	107.62	184.011	1.79	-0.96	-31.91
2536.00	1.730	80.380	2530.65	-105.91	-108.37	-4.69	1735574.83	397564.27	39°35'15.916"N	80°26'17.724"W	108.47	182.476	1.93	-0.64	-53.79
2630.00	1.270	345.490	2624.63	-104.88	-107.12	-3.55	1735575.96	397565.51	39°35'15.928"N	80°26'17.710"W	107.18	181.896	2.37	-0.49	-100.95
2725.00	1.820	314.730	2719.60	-102.65	-105.10	-4.94	1735574.57	397567.53	39°35'15.948"N	80°26'17.728"W	105.22	182.689	1.09	0.58	-35.54
2819.00	1.170	261.350	2813.57	-101.45	-104.25	-7.00	1735572.51	397568.38	39°35'15.956"N	80°26'17.754"W	104.49	183.841	1.49	-0.69	-53.60
2913.00	0.620	172.310	2907.56	-101.94	-104.90	-7.88	1735571.63	397567.74	39°35'15.950"N	80°26'17.765"W	105.20	184.296	1.40	-0.59	-94.72
2934.00	0.680	178.470	2928.36	-102.18	-105.14	-7.86	1735571.65	397567.50	39°35'15.947"N	80°26'17.765"W	105.43	184.276	0.44	0.29	29.53
3070.00	0.650	202.310	3064.55	-103.63	-106.66	-8.13	1735571.38	397565.98	39°35'15.932"N	80°26'17.768"W	106.97	184.361	0.20	-0.02	17.53
3165.00	0.370	198.290	3159.55	-104.33	-107.45	-8.43	1735571.08	397565.19	39°35'15.924"N	80°26'17.772"W	107.78	184.488	0.30	-0.29	-4.23

RECEIVED
Office of Oil and Gas

AUG 30 2017

WV Department of
Environmental Protection

Actual Wellpath Report

Wright 2H AWP Proj: 12992'

Page 3 of 8



REFERENCE DATA (WELL IDENTIFICATION)

Operator	TRANS ENERGY Inc.	Slot	Slot 02
Area	Marion County, WV	Well	Wright 2H
Field	Marion	Wellbore	Wright 2H AWP
Facility	Wright Pad		

WELLPATH DATA (174 stations)

MD [ft]	Inclination [°]	Azimuth [°]	TVD [ft]	Vert Sect [ft]	North [ft]	East [ft]	Grid East [US ft]	Grid North [US ft]	Latitude	Longitude	Closure Dist [ft]	Closure Dir [°]	DLS ["/100ft]	Build Rate ["/100ft]	Turn Rate ["/100ft]
3259.00	0.510	167.790	3253.54	-105.04	-108.14	-8.44	1735571.07	397564.49	39°35'15.917"N	80°26'17.772"W	108.47	184.463	0.29	0.15	-32.45
3354.00	0.220	106.000	3348.54	-105.54	-108.61	-8.18	1735571.33	397564.03	39°35'15.913"N	80°26'17.768"W	108.92	184.305	0.47	-0.31	-65.64
3448.00	0.420	178.060	3442.54	-105.96	-109.00	-7.99	1735571.52	397563.63	39°35'15.909"N	80°26'17.766"W	109.50	184.193	0.44	0.21	76.66
3542.00	0.150	211.250	3536.54	-106.39	-109.45	-8.04	1735571.47	397563.18	39°35'15.905"N	80°26'17.767"W	109.75	184.203	0.33	-0.29	35.31
3637.00	0.410	244.560	3631.54	-106.58	-109.70	-8.41	1735571.10	397562.93	39°35'15.902"N	80°26'17.771"W	110.03	184.386	0.31	0.27	35.06
3731.00	0.450	283.850	3725.53	-106.52	-109.76	-9.08	1735570.43	397562.88	39°35'15.901"N	80°26'17.780"W	110.14	184.727	0.31	0.04	41.80
3825.00	0.560	291.750	3819.53	-106.13	-109.50	-9.86	1735569.65	397563.13	39°35'15.904"N	80°26'17.790"W	109.95	185.146	0.14	0.12	8.40
3920.00	0.540	266.900	3914.53	-105.83	-109.35	-10.74	1735568.77	397563.28	39°35'15.905"N	80°26'17.801"W	109.88	185.609	0.25	-0.02	-26.16
4014.00	0.510	215.970	4008.52	-106.07	-109.72	-11.43	1735568.08	397562.92	39°35'15.902"N	80°26'17.810"W	110.31	185.946	0.48	-0.03	-54.18
4108.00	0.250	253.440	4102.52	-106.38	-110.11	-11.87	1735567.64	397562.52	39°35'15.898"N	80°26'17.815"W	110.75	186.153	0.37	-0.28	39.86
4203.00	0.250	174.990	4197.52	-106.61	-110.38	-12.05	1735567.46	397562.26	39°35'15.895"N	80°26'17.818"W	111.04	186.231	0.33	0.00	-82.58
4297.00	0.250	150.760	4291.52	-107.01	-110.76	-11.93	1735567.58	397561.87	39°35'15.891"N	80°26'17.816"W	111.40	186.149	0.11	0.00	-25.78
4391.00	0.330	81.310	4385.52	-107.21	-110.90	-11.56	1735567.95	397561.74	39°35'15.890"N	80°26'17.811"W	111.50	185.953	0.36	0.09	-73.67
4486.00	0.390	79.830	4480.52	-107.21	-110.80	-10.98	1735568.53	397561.83	39°35'15.891"N	80°26'17.804"W	111.35	185.657	0.06	0.06	-1.77
4580.00	0.220	64.850	4574.52	-107.17	-110.67	-10.50	1735569.01	397561.97	39°35'15.892"N	80°26'17.798"W	111.17	185.419	0.20	-0.18	-15.94
4674.00	0.180	340.910	4668.52	-106.97	-110.45	-10.38	1735569.13	397562.18	39°35'15.894"N	80°26'17.796"W	110.94	185.370	0.29	-0.04	-89.50
4768.00	0.290	334.180	4762.51	-106.60	-110.10	-10.53	1735568.98	397562.54	39°35'15.898"N	80°26'17.798"W	110.60	185.465	0.12	0.12	-7.16
4863.00	0.440	286.520	4857.51	-106.20	-109.78	-10.99	1735568.52	397562.86	39°35'15.901"N	80°26'17.804"W	110.33	185.716	0.34	0.16	-50.17
4957.00	0.140	290.310	4951.51	-105.99	-109.64	-11.44	1735568.07	397563.00	39°35'15.902"N	80°26'17.810"W	110.23	185.958	0.32	-0.32	4.03
5052.00	0.100	282.850	5046.51	-105.89	-109.58	-11.63	1735567.88	397563.06	39°35'15.903"N	80°26'17.812"W	110.20	186.060	0.05	-0.04	-7.85
5146.00	0.070	298.230	5140.51	-105.83	-109.53	-11.76	1735567.75	397563.10	39°35'15.903"N	80°26'17.814"W	110.16	186.130	0.04	-0.03	16.36
5240.00	0.380	335.900	5234.51	-105.49	-109.22	-11.94	1735567.57	397563.41	39°35'15.906"N	80°26'17.816"W	109.87	186.239	0.35	0.33	40.07
5335.00	0.330	259.290	5329.51	-105.19	-108.99	-12.34	1735567.17	397563.65	39°35'15.909"N	80°26'17.822"W	109.68	186.459	0.47	-0.05	-80.64
5383.00	1.400	195.810	5377.50	-105.72	-109.58	-12.63	1735566.88	397563.06	39°35'15.903"N	80°26'17.825"W	110.30	186.577	2.68	2.23	-132.25
5429.00	2.650	171.720	5423.47	-107.29	-111.17	-12.63	1735566.88	397561.47	39°35'15.887"N	80°26'17.825"W	111.88	186.484	3.23	2.72	-52.57
5480.00	3.150	166.790	5474.41	-109.86	-113.70	-12.14	1735567.37	397558.94	39°35'15.862"N	80°26'17.818"W	114.35	186.096	1.09	0.98	-9.67
5523.00	4.260	161.330	5517.32	-112.62	-116.36	-11.36	1735568.15	397556.27	39°35'15.836"N	80°26'17.808"W	116.92	185.577	2.71	2.58	-12.70
5574.00	4.610	159.630	5568.17	-116.51	-120.08	-10.04	1735569.47	397552.56	39°35'15.799"N	80°26'17.791"W	120.50	184.781	0.73	0.69	-3.53
5618.00	4.520	158.760	5612.03	-119.95	-123.35	-8.80	1735570.71	397549.29	39°35'15.767"N	80°26'17.774"W	123.67	184.080	0.26	-0.20	-1.98
5712.00	5.300	152.520	5705.68	-127.72	-130.66	-5.45	1735574.06	397541.98	39°35'15.695"N	80°26'17.731"W	130.77	182.390	1.00	0.83	-6.64

RECEIVED
Office of Oil and Gas

AUG 30 2017

WV Department of
Environmental Protection

Actual Wellpath Report

Wright 2H AWP Proj: 12992'

Page 4 of 8



REFERENCE WELLPATH IDENTIFICATION

Operator	TRANS ENERGY Inc.	Slot	Slot 02
Area	Marion County, WV	Well	Wright 2H
Field	Marion	Wellbore	Wright 2H AWP
Facility	Wright Pad		

WELLPATH DATA (174 stations)

ID [ft]	Inclination [°]	Azimuth [°]	TVD [ft]	Vert Sect [ft]	North [ft]	East [ft]	Grid East [US ft]	Grid North [US ft]	Latitude	Longitude	Closure Dist [ft]	Closure Dir [°]	DLS [°/100ft]	Build Rate [°/100ft]	Turn Rate [°/100ft]
5761.00	7.240	151.530	5754.39	-132.81	-135.38	-2.94	1735576.57	3975537.26	39°35'15.649"N	80°26'17.698"W	135.41	181.243	3.97	3.96	-2.02
5806.00	8.770	154.130	5798.95	-138.80	-140.96	-0.09	1735579.42	3975531.68	39°35'15.594"N	80°26'17.661"W	140.96	180.036	3.49	3.40	5.78
5856.00	9.750	157.080	5848.29	-146.59	-148.29	3.22	1735582.73	3975524.55	39°35'15.522"N	80°26'17.618"W	148.32	178.755	2.18	1.96	5.90
5901.00	9.600	157.980	5892.65	-153.98	-155.28	6.11	1735585.62	3975517.36	39°35'15.453"N	80°26'17.580"W	155.40	177.745	0.47	-0.33	2.00
5946.00	10.430	163.730	5936.97	-161.70	-162.67	8.66	1735588.17	3975509.97	39°35'15.380"N	80°26'17.546"W	162.90	176.952	2.89	1.84	12.78
5995.00	9.870	159.120	5985.20	-170.23	-170.85	11.40	1735590.91	3975501.79	39°35'15.300"N	80°26'17.510"W	171.23	176.182	2.01	-1.14	-9.41
6039.00	12.150	165.790	6028.39	-178.55	-178.86	13.88	1735593.39	397493.78	39°35'15.221"N	80°26'17.477"W	179.40	175.562	5.93	5.18	15.16
6089.00	14.140	166.840	6077.08	-189.90	-189.91	16.57	1735596.07	397482.73	39°35'15.112"N	80°26'17.442"W	190.63	175.015	4.01	3.98	2.10
6135.00	16.380	172.530	6121.46	-201.99	-201.81	18.69	1735598.20	397470.83	39°35'14.995"N	80°26'17.413"W	202.68	174.709	5.85	4.87	12.37
6184.00	17.630	177.620	6168.32	-216.25	-216.08	19.89	1735599.40	397456.56	39°35'14.854"N	80°26'17.396"W	216.99	174.740	3.96	2.55	10.39
6234.00	18.930	183.650	6215.80	-231.64	-231.74	19.69	1735599.20	397440.90	39°35'14.699"N	80°26'17.396"W	232.58	175.143	4.59	2.60	12.06
6278.00	19.930	183.960	6257.29	-245.85	-246.34	18.72	1735598.23	397426.30	39°35'14.554"N	80°26'17.407"W	247.06	175.654	2.38	2.27	0.70
6327.00	19.860	187.710	6303.37	-261.89	-262.92	17.03	1735596.54	397409.72	39°35'14.390"N	80°26'17.426"W	263.48	176.295	2.61	-0.14	7.65
6372.00	16.970	187.220	6346.06	-275.44	-277.02	15.18	1735594.68	397395.63	39°35'14.251"N	80°26'17.448"W	277.43	176.864	6.43	-6.42	-1.09
6415.00	17.090	185.010	6387.17	-287.54	-289.54	13.84	1735593.34	397383.11	39°35'14.127"N	80°26'17.465"W	289.87	177.264	1.53	0.28	-5.14
6467.00	16.460	187.140	6436.96	-301.96	-304.46	12.25	1735591.76	397368.19	39°35'13.980"N	80°26'17.481"W	304.71	177.696	1.69	-1.21	4.10
6535.00	18.050	185.410	6501.90	-321.32	-324.51	10.06	1735589.57	397348.14	39°35'13.781"N	80°26'17.507"W	324.66	178.224	2.46	2.34	-2.54
6579.00	19.920	184.860	6543.50	-335.14	-338.76	8.78	1735588.29	397333.89	39°35'13.640"N	80°26'17.521"W	338.88	178.515	4.27	4.25	-1.25
6629.00	21.410	184.040	6590.29	-352.23	-356.35	7.42	1735586.93	397316.30	39°35'13.466"N	80°26'17.536"W	356.43	178.807	3.04	2.98	-1.64
6723.00	21.950	182.930	6677.64	-386.00	-391.02	5.31	1735584.82	397281.64	39°35'13.123"N	80°26'17.559"W	391.05	179.222	0.72	0.57	-1.18
6818.00	22.020	186.280	6765.73	-420.40	-426.45	2.46	1735581.97	397246.21	39°35'12.773"N	80°26'17.590"W	426.46	179.670	1.32	0.07	3.53
6912.00	21.960	188.700	6852.89	-453.96	-461.34	-2.15	1735577.38	397211.32	39°35'12.428"N	80°26'17.644"W	461.35	180.265	0.97	-0.06	2.57
7006.00	22.060	189.270	6940.04	-487.27	-496.14	-7.63	1735571.88	397176.52	39°35'12.083"N	80°26'17.710"W	496.20	180.881	0.25	0.11	0.61
7101.00	22.060	189.660	7028.09	-520.91	-531.33	-13.50	1735566.01	397141.33	39°35'11.735"N	80°26'17.780"W	531.50	181.455	0.15	0.00	0.41
7167.00	21.970	185.860	7089.28	-544.46	-553.83	-16.84	1735562.67	397116.83	39°35'11.492"N	80°26'17.819"W	556.09	181.735	2.16	-0.14	-5.76
7195.00	22.000	183.890	7115.24	-554.59	-566.27	-17.73	1735561.78	397106.39	39°35'11.389"N	80°26'17.829"W	566.55	181.793	2.64	0.11	-7.04
7231.00	20.270	182.330	7148.82	-567.23	-579.23	-18.44	1735561.07	397093.43	39°35'11.261"N	80°26'17.857"W	579.53	181.824	5.05	-4.81	-4.33
7261.00	16.650	182.000	7177.27	-576.52	-588.73	-18.80	1735560.71	397083.94	39°35'11.167"N	80°26'17.840"W	589.63	181.829	12.07	-12.07	-1.10
7289.00	12.850	182.090	7204.35	-583.49	-595.85	-19.06	1735560.45	397076.82	39°35'11.097"N	80°26'17.842"W	596.15	181.832	15.57	-15.57	0.32
7326.00	8.900	183.100	7240.67	-590.30	-602.82	-19.36	1735560.15	397069.85	39°35'11.028"N	80°26'17.845"W	603.13	181.840	10.69	-10.68	2.73

RECEIVED
Office of Oil and Gas

AUG 30 2017

WV Department of
Environmental Protection

Actual Wellpath Report

Wright 2H AWP Proj: 12992'

Page 5 of 8



REVISIONS BY DATE AND DESCRIPTION

Operator	TRANS ENERGY Inc.	Slot	Slot 02
Area	Marion County, WV	Well	Wright 2H
Field	Marion	Wellbore	Wright 2H AWB
Facility	Wright Pad		

WELLPATH DATA (174 stations)

MD [ft]	Inclination [°]	Azimuth [°]	TVD [ft]	Vert Sect [ft]	North [ft]	East [ft]	Grid East [US ft]	Grid North [US ft]	Latitude	Longitude	Closure Dist [ft]	Closure Dir [°]	DLS [°/100ft]	Build Rate [°/100ft]	Turn Rate [°/100ft]
7355.00	5.440	183.800	7269.44	-595.82	-606.43	-19.57	1735559.94	397066.23	39°35'10.992"N	80°26'17.848"W	606.75	181.849	11.93	-11.93	2.41
7383.00	2.076	197.940	7297.38	-595.56	-608.24	-19.82	1735559.69	397064.43	39°35'10.974"N	80°26'17.850"W	608.56	181.866	12.39	-12.04	50.50
7418.00	1.660	209.280	7332.37	-595.73	-608.52	-20.40	1735559.11	397064.15	39°35'10.971"N	80°26'17.858"W	608.86	181.921	8.82	-1.17	318.11
7451.00	7.180	336.130	7365.26	-593.37	-606.33	-21.61	1735557.96	397066.34	39°35'10.993"N	80°26'17.874"W	606.71	182.041	17.42	16.73	81.36
7478.00	9.330	334.910	7391.98	-589.61	-602.80	-23.22	1735556.29	397069.86	39°35'11.027"N	80°26'17.895"W	603.25	182.206	7.99	7.96	-4.52
7512.00	11.120	330.710	7425.44	-585.86	-597.45	-25.99	1735553.52	397075.22	39°35'11.080"N	80°26'17.931"W	598.01	182.491	5.70	5.26	-12.55
7543.00	13.820	331.480	7455.70	-577.52	-591.59	-29.25	1735550.29	397081.08	39°35'11.138"N	80°26'17.973"W	592.31	182.828	8.73	8.71	2.48
7572.00	16.570	332.330	7483.69	-570.30	-584.88	-32.80	1735546.71	397087.79	39°35'11.204"N	80°26'18.019"W	585.80	183.210	9.51	9.48	2.93
7606.00	18.570	334.560	7516.10	-560.46	-575.70	-37.38	1735542.13	397096.97	39°35'11.294"N	80°26'18.079"W	576.91	183.715	6.21	5.88	6.56
7638.00	20.200	336.740	7546.29	-550.17	-566.02	-41.73	1735537.76	397106.65	39°35'11.389"N	80°26'18.136"W	567.56	184.218	5.37	5.09	6.81
7666.00	21.460	338.940	7572.46	-540.44	-556.80	-45.50	1735534.01	397115.87	39°35'11.480"N	80°26'18.185"W	558.65	184.672	5.30	4.50	7.86
7701.00	23.040	341.790	7604.85	-527.37	-544.31	-49.94	1735529.57	397128.35	39°35'11.603"N	80°26'18.244"W	546.60	185.242	5.47	4.51	8.14
7733.00	24.680	343.290	7634.11	-514.54	-531.97	-53.82	1735525.76	397140.70	39°35'11.724"N	80°26'18.295"W	534.68	185.777	5.46	5.13	4.69
7761.00	26.930	343.570	7659.32	-502.43	-520.28	-57.29	1735522.22	397152.38	39°35'11.839"N	80°26'18.341"W	523.43	186.284	8.05	8.04	1.00
7795.00	31.200	343.270	7689.03	-486.03	-504.46	-62.01	1735517.51	397168.20	39°35'11.995"N	80°26'18.403"W	508.25	187.008	12.57	12.56	-0.88
7827.00	35.400	343.330	7715.77	-468.58	-487.63	-67.05	1735512.46	397185.03	39°35'12.161"N	80°26'18.470"W	492.22	187.830	13.13	13.12	0.19
7855.00	38.410	343.950	7738.16	-451.87	-471.50	-71.79	1735507.73	397201.16	39°35'12.320"N	80°26'18.532"W	476.94	188.657	10.83	10.75	2.21
7890.00	41.150	344.540	7765.05	-429.59	-449.95	-77.86	1735501.65	397222.71	39°35'12.532"N	80°26'18.613"W	456.64	189.818	7.96	7.83	1.69
7921.00	43.790	345.690	7787.92	-408.74	-429.72	-83.23	1735496.28	397242.93	39°35'12.732"N	80°26'18.684"W	437.71	190.962	8.88	8.52	3.71
7949.00	46.440	346.770	7807.68	-388.95	-410.46	-87.95	1735491.56	397262.20	39°35'12.922"N	80°26'18.747"W	419.77	192.094	9.85	9.46	3.86
7985.00	49.170	346.660	7831.85	-362.32	-384.50	-94.08	1735485.43	397288.15	39°35'13.178"N	80°26'18.829"W	395.84	193.739	7.59	7.58	-0.31
8015.00	52.440	346.500	7850.81	-339.12	-361.89	-99.48	1735480.04	397310.76	39°35'13.400"N	80°26'18.901"W	375.31	195.370	10.91	10.90	-0.53
8044.00	55.490	346.420	7867.87	-315.71	-339.09	-104.97	1735474.55	397333.56	39°35'13.625"N	80°26'18.974"W	354.97	197.200	10.52	10.52	-0.28
8080.00	59.430	346.190	7887.23	-285.43	-309.61	-112.15	1735467.36	397363.04	39°35'13.916"N	80°26'19.070"W	329.30	199.912	10.96	10.94	-0.64
8112.00	63.190	346.490	7902.59	-257.42	-282.34	-118.78	1735460.74	397390.31	39°35'14.185"N	80°26'19.158"W	306.31	202.816	11.78	11.75	0.94
8138.00	66.760	347.100	7913.58	-233.91	-259.41	-124.16	1735455.36	397413.24	39°35'14.411"N	80°26'19.230"W	287.59	205.577	13.89	13.73	2.35
8175.00	70.560	348.110	7927.05	-199.48	-225.75	-131.55	1735447.97	397446.89	39°35'14.742"N	80°26'19.329"W	261.29	210.230	10.58	10.27	2.73
8206.00	73.250	348.270	7936.67	-170.03	-196.91	-137.58	1735441.94	397476.73	39°35'15.027"N	80°26'19.409"W	240.21	214.941	8.69	8.68	0.52
8233.00	76.470	349.190	7943.73	-143.98	-171.36	-142.67	1735436.85	397501.28	39°35'15.279"N	80°26'19.478"W	222.98	219.781	12.37	11.93	3.41
8269.00	80.320	350.080	7950.97	-108.72	-136.67	-149.01	1735430.51	397535.96	39°35'15.621"N	80°26'19.563"W	202.20	227.473	10.97	10.69	2.47

RECEIVED
Office of Oil and Gas

AUG 30 2017

WV Department of
Environmental Protection

Actual Wellpath Report

Wright 2H AWP Proj: 12992'

Page 6 of 8



EXTENSION MAP AREA FIELD ASSESSMENT

Operator	TRANS ENERGY Inc.	Slot	Slot 02
Area	Marion County, WV	Well	Wright 2H
Field	Marion	Wellbore	Wright 2H AWB
Facility	Wright Pad		

WELLPATH DATA (174 stations)

MD [ft]	Inclination [°]	Azimuth [°]	TVD [ft]	Vert Sect [ft]	North [ft]	East [ft]	Grid East [US ft]	Grid North [US ft]	Latitude	Longitude	Closure Dist [ft]	Closure Dir [°]	DLS [°/100ft]	Build Rate [°/100ft]	Turn Rate [°/100ft]
8298.00	82.900	350.300	7955.20	-80.03	-108.41	-153.90	1735425.62	397564.23	39°35'15.900"N	80°26'19.630"W	188.25	234.840	8.93	8.90	0.76
8327.00	86.000	350.900	7958.00	-51.18	-79.93	-158.61	1735420.91	397592.70	39°35'16.181"N	80°26'19.694"W	177.62	243.254	10.89	10.69	2.07
8361.00	89.970	351.520	7959.20	-17.21	-46.36	-163.80	1735415.72	397626.27	39°35'16.512"N	80°26'19.764"W	176.24	254.197	11.82	11.68	1.82
8422.00	90.220	353.420	7959.10	43.73	14.11	-171.80	1735407.72	397686.74	39°35'17.109"N	80°26'19.875"W	172.38	274.696	3.14	0.41	3.11
8517.00	90.000	352.500	7958.91	138.60	108.39	-183.44	1735396.08	397781.02	39°35'18.039"N	80°26'20.036"W	213.07	300.578	1.00	-0.23	-0.97
8611.00	89.910	349.790	7958.99	232.57	201.26	-197.91	1735381.61	397873.88	39°35'18.956"N	80°26'20.233"W	282.27	315.481	2.88	-0.10	-2.88
8706.00	90.030	350.780	7959.04	327.57	294.90	-213.94	1735365.58	397967.51	39°35'19.879"N	80°26'20.450"W	364.33	324.040	1.05	0.13	1.04
8801.00	89.880	352.820	7959.11	422.52	388.92	-227.49	1735352.03	398061.53	39°35'20.807"N	80°26'20.636"W	450.57	329.676	2.15	-0.16	2.15
8895.00	89.910	353.560	7959.28	516.37	482.26	-238.64	1735340.89	398154.86	39°35'21.728"N	80°26'20.791"W	538.07	333.673	0.79	0.03	0.79
8990.00	90.090	352.990	7959.28	611.22	576.61	-249.76	1735329.76	398249.20	39°35'22.660"N	80°26'20.945"W	628.38	336.580	0.63	0.19	-0.60
9085.00	90.340	353.860	7958.93	706.05	679.98	-260.64	1735318.89	398343.57	39°35'23.591"N	80°26'21.097"W	719.82	338.772	0.95	0.26	0.92
9179.00	90.490	348.500	7958.25	799.99	763.83	-275.05	1735304.48	398436.42	39°35'24.507"N	80°26'21.293"W	811.84	340.197	5.70	0.16	-5.70
9273.00	90.620	347.530	7957.33	893.93	855.78	-294.36	1735284.96	398528.36	39°35'25.414"N	80°26'21.555"W	905.05	341.006	1.04	0.14	-1.03
9368.00	90.250	347.020	7956.61	988.82	948.44	-315.49	1735264.04	398621.01	39°35'26.328"N	80°26'21.875"W	999.54	341.601	0.66	-0.39	-0.54
9462.00	90.280	348.640	7956.18	1082.75	1040.32	-335.31	1735244.23	398712.89	39°35'27.234"N	80°26'22.100"W	1093.03	342.135	1.72	0.03	1.72
9556.00	90.280	344.540	7955.72	1176.56	1131.74	-357.10	1735222.43	398804.30	39°35'28.135"N	80°26'22.391"W	1186.74	342.488	4.36	0.00	-4.36
9651.00	90.250	345.260	7955.28	1271.18	1223.46	-381.85	1735197.69	398896.01	39°35'29.039"N	80°26'22.719"W	1281.66	342.667	0.76	-0.03	0.76
9745.00	90.310	350.380	7954.82	1365.08	1315.31	-401.67	1735177.86	398987.86	39°35'29.944"N	80°26'22.984"W	1375.28	343.018	5.45	0.06	5.45
9839.00	90.280	355.430	7954.34	1458.93	1408.56	-413.28	1735166.26	399081.10	39°35'30.865"N	80°26'23.145"W	1467.94	343.648	5.37	-0.03	5.37
9934.00	90.000	350.340	7954.10	1553.77	1502.80	-425.04	1735154.49	399173.34	39°35'31.795"N	80°26'23.308"W	1561.75	344.207	5.37	-0.29	-5.36
10028.00	89.970	343.940	7954.13	1647.61	1594.39	-445.95	1735133.58	399266.93	39°35'32.698"N	80°26'23.587"W	1655.59	344.374	6.81	-0.63	-6.81
10122.00	90.000	343.350	7954.15	1741.03	1684.59	-472.42	1735117.12	399357.12	39°35'33.587"N	80°26'23.938"W	1749.58	344.334	0.63	0.03	-0.63
10217.00	89.940	344.950	7954.20	1835.53	1775.97	-498.37	1735081.17	399448.50	39°35'34.487"N	80°26'24.281"W	1844.57	344.325	1.69	-0.06	1.68
10311.00	89.970	345.860	7954.28	1929.23	1866.94	-522.05	1735057.49	399539.46	39°35'35.384"N	80°26'24.596"W	1938.56	344.377	0.97	0.03	0.97
10405.00	90.000	353.300	7954.30	2023.16	1959.32	-539.04	1735040.50	399631.83	39°35'36.295"N	80°26'24.825"W	2032.12	344.618	7.91	0.03	7.91
10500.00	90.000	353.710	7954.30	2117.98	2053.71	-549.79	1735029.75	399726.22	39°35'37.226"N	80°26'24.975"W	2126.03	345.013	0.43	0.00	0.43
10594.00	90.050	352.940	7954.28	2211.82	2147.08	-560.72	1735018.83	399819.58	39°35'38.148"N	80°26'25.127"W	2219.09	345.364	0.82	0.03	-0.82
10688.00	89.970	355.640	7954.28	2305.55	2240.60	-576.07	1735009.48	399913.09	39°35'39.071"N	80°26'25.259"W	2311.98	345.725	2.87	-0.06	2.87
10783.00	90.030	355.560	7954.28	2400.10	2335.32	-577.36	1735002.19	400007.81	39°35'40.007"N	80°26'25.365"W	2405.63	346.113	0.11	0.06	-0.08
10877.00	90.150	355.470	7954.13	2493.66	2429.03	-584.71	1734994.84	400101.51	39°35'40.932"N	80°26'25.471"W	2498.42	346.465	0.16	0.13	-0.10

RECEIVED
Office of Oil and Gas

AUG 30 2017

WV Department of
Environmental Protection

Actual Wellpath Report

Wright 2H AWP Proj: 12992'

Page 7 of 8



REFERENCE WELLPATH IDENTIFICATION

Operator	TRANS ENERGY Inc.	Slot	Slot 02
Area	Marion County, WV	Well	Wright 2H
Field	Marion	Wellbore	Wright 2H AWB
Facility	Wright Pad		

WELLPATH DATA (174 stations)

MD [ft]	Inclination [°]	Azimuth [°]	TVD [ft]	Vert Sect [ft]	North [ft]	East [ft]	Grid East [US ft]	Grid North [US ft]	Latitude	Longitude	Closure Dist [ft]	Closure Dir [°]	DLS [°/100ft]	Build Rate [°/100ft]	Turn Rate [°/100ft]
10971.00	90.250	350.620	7953.80	2587.50	2522.31	-596.09	1754983.46	400194.79	39°35'41.853"N	80°26'25.629"W	2591.79	346.704	5.16	0.11	-5.16
11065.00	90.220	347.910	7953.41	2681.49	2614.66	-613.59	1754965.95	400287.13	39°35'42.763"N	80°26'25.865"W	2685.69	346.793	2.88	-0.03	-2.88
11160.00	90.650	339.490	7952.69	2776.45	2707.81	-632.21	1754947.34	400380.28	39°35'43.682"N	80°26'26.115"W	2780.63	346.858	1.72	0.45	1.66
11254.00	90.490	346.300	7951.76	2870.37	2799.78	-651.92	1754927.63	400472.16	39°35'44.588"N	80°26'26.379"W	2874.60	346.892	3.40	-0.17	-3.39
11349.00	90.550	347.370	7950.90	2965.22	2892.20	-675.55	1754906.00	400564.66	39°35'45.500"N	80°26'26.668"W	2969.60	346.890	1.13	0.06	1.13
11443.00	90.620	349.670	7949.94	3059.18	2984.31	-692.26	1754887.30	400656.76	39°35'46.408"N	80°26'26.919"W	3065.55	346.940	2.45	0.07	2.45
11537.00	90.090	350.820	7949.35	3153.18	3076.95	-708.18	1754871.37	400749.39	39°35'47.322"N	80°26'27.135"W	3157.39	347.039	1.35	-0.56	1.22
11632.00	90.370	352.890	7948.97	3248.12	3170.98	-721.64	1754857.91	400843.42	39°35'48.250"N	80°26'27.320"W	3252.66	347.179	2.20	0.29	2.18
11726.00	89.910	350.060	7948.74	3342.08	3263.94	-735.58	1754845.98	400936.37	39°35'49.167"N	80°26'27.510"W	3345.80	347.300	3.05	-0.49	-3.01
11820.00	89.880	348.960	7948.91	3436.08	3356.36	-752.69	1754826.87	401028.79	39°35'50.079"N	80°26'27.741"W	3439.73	347.360	1.17	-0.03	-1.17
11915.00	89.910	347.330	7949.09	3531.02	3449.33	-772.20	1754807.35	401121.75	39°35'50.996"N	80°26'28.003"W	3534.71	347.381	1.72	0.03	-1.72
12009.00	89.940	342.420	7949.21	3624.62	3540.05	-796.72	1754782.83	401212.46	39°35'51.890"N	80°26'28.328"W	3628.60	347.316	5.22	0.03	-5.22
12103.00	90.000	344.490	7949.26	3718.00	3630.15	-823.49	1754756.07	401302.36	39°35'52.778"N	80°26'28.682"W	3722.38	347.219	2.20	0.06	2.20
12198.00	90.310	347.310	7949.00	3812.75	3722.28	-846.63	1754732.93	401394.68	39°35'53.686"N	80°26'28.990"W	3817.35	347.186	2.99	0.33	2.97
12292.00	90.060	343.550	7948.70	3906.43	3813.24	-870.27	1754709.29	401485.61	39°35'54.582"N	80°26'29.304"W	3911.29	347.144	4.01	-0.27	-4.00
12386.00	90.680	351.530	7948.09	4000.27	3904.95	-890.54	1754689.03	401577.34	39°35'55.486"N	80°26'29.575"W	4005.21	347.153	8.51	0.66	8.49
12480.00	91.850	356.090	7946.02	4094.01	3998.35	-900.67	1754678.89	401670.74	39°35'56.408"N	80°26'29.717"W	4098.54	347.305	5.01	1.24	4.85
12575.00	90.520	352.410	7944.05	4188.71	4092.84	-910.18	1754669.38	401765.22	39°35'57.341"N	80°26'29.851"W	4192.82	347.462	4.12	-1.40	-3.87
12669.00	90.520	351.080	7943.28	4282.66	4185.86	-923.68	1754655.89	401858.23	39°35'58.259"N	80°26'30.036"W	4286.56	347.556	1.41	0.00	-1.41
12763.00	90.770	345.420	7942.14	4376.57	4277.84	-942.81	1754636.75	401950.21	39°35'59.166"N	80°26'30.293"W	4380.51	347.571	6.03	0.27	-6.02
12858.00	89.780	343.860	7941.68	4471.15	4369.44	-967.98	1754611.39	402041.81	39°36'00.069"N	80°26'30.627"W	4475.38	347.509	1.94	-1.04	-1.64
12952.00	89.420	346.870	7942.34	4564.83	4460.38	-991.72	1754587.85	402132.74	39°36'00.965"N	80°26'30.942"W	4569.30	347.465	3.22	-0.38	3.20
12968.00	89.420	348.180	7942.56	4580.81	4476.00	-995.18	1754584.39	402148.36	39°36'01.119"N	80°26'30.989"W	4585.50	347.465	8.19	0.00	8.19
12992.00	89.420	348.180	7942.74	4604.80	4499.49	-1000.09	1754579.48	402171.85	39°36'01.351"N	80°26'31.054"W	4609.30	347.469	0.00	0.00	0.00

RECEIVED
Office of Oil and Gas
AUG 30 2017
WV Department of
Environmental Protection

Actual Wellpath Report

Wright 2H AWP Proj: 12992'

Page 8 of 8



HEADINGS AND UNITS

Operator	TRANS ENERGY Inc.	Slot	Slot 02
Area	Marion County, WV	Well	Wright 2H
Field	Marion	Wellbore	Wright 2H AWB
Facility	Wright Pad		

TARGETS

Name	MD [ft]	TVD [ft]	North [ft]	East [ft]	Grid East [US ft]	Grid North [US ft]	Latitude	Longitude	Shape
Wright HL A		1522.00	2493.94	155.89	1735735.39	400366.42	39°35'41.650"N	80°26'16.020"W	point
Wright HL A1		1522.00	2559.34	94.72	1735674.23	400231.82	39°35'42.290"N	80°26'16.810"W	point
Wright HL A2		1522.00	2644.38	90.91	1735670.42	400316.85	39°35'43.130"N	80°26'16.870"W	point
Wright HL A3		1522.00	2798.23	86.26	1735665.76	400470.69	39°35'44.650"N	80°26'16.950"W	point
Wright HL C		1522.00	4467.72	-1064.27	1734515.31	402140.08	39°36'01.030"N	80°26'31.870"W	point
Wright HL D		1522.00	5497.35	-53.86	1735525.66	403169.65	39°36'11.310"N	80°26'19.100"W	point
Wright 2H LP_EOC Rev-2		7967.00	-1.65	-167.78	1735411.74	397670.98	39°35'16.953"N	80°26'19.821"W	point
Wright 2H PBHL Rev-1		7967.00	4508.77	-963.09	1734616.48	402181.12	39°36'01.446"N	80°26'30.583"W	point

WELLPATH COMPOSITION - Ref Wellbore: Wright 2H AWB Ref Wellpath: Wright 2H AWP Proj: 12992'

Start MD [ft]	End MD [ft]	Positional Uncertainty Model	Log Name/Comment	Wellbore
29.00	2934.00	ISCWSA MWD Rev 2 (Standard)	01_APS EM - 12-14" (1281'-2934') Proj 3000'	Wright 2H AWB
2934.00	6467.00	NaviTrak (MagCorr)	02_BHI MWD 8.75in Section 3070'-6467'	Wright 2H AWB
6467.00	12968.00	NaviTrak (MagCorr)	03_BHI AT Curve - 8.75" (6535'-12968')	Wright 2H AWB
12968.00	12992.00	Blind Drilling (std)	Projection to bit	Wright 2H AWB

RECEIVED
Office of Oil and Gas

AUG 30 2017

WV Department of
Environmental Protection

TRANS ENERGY Inc.

Location: Marion County, WV
 Field: Marion
 Facility: Wright Pad

Slot: Slot 02
 Well: Wright 2H
 Wellbore: Wright 2H PWB

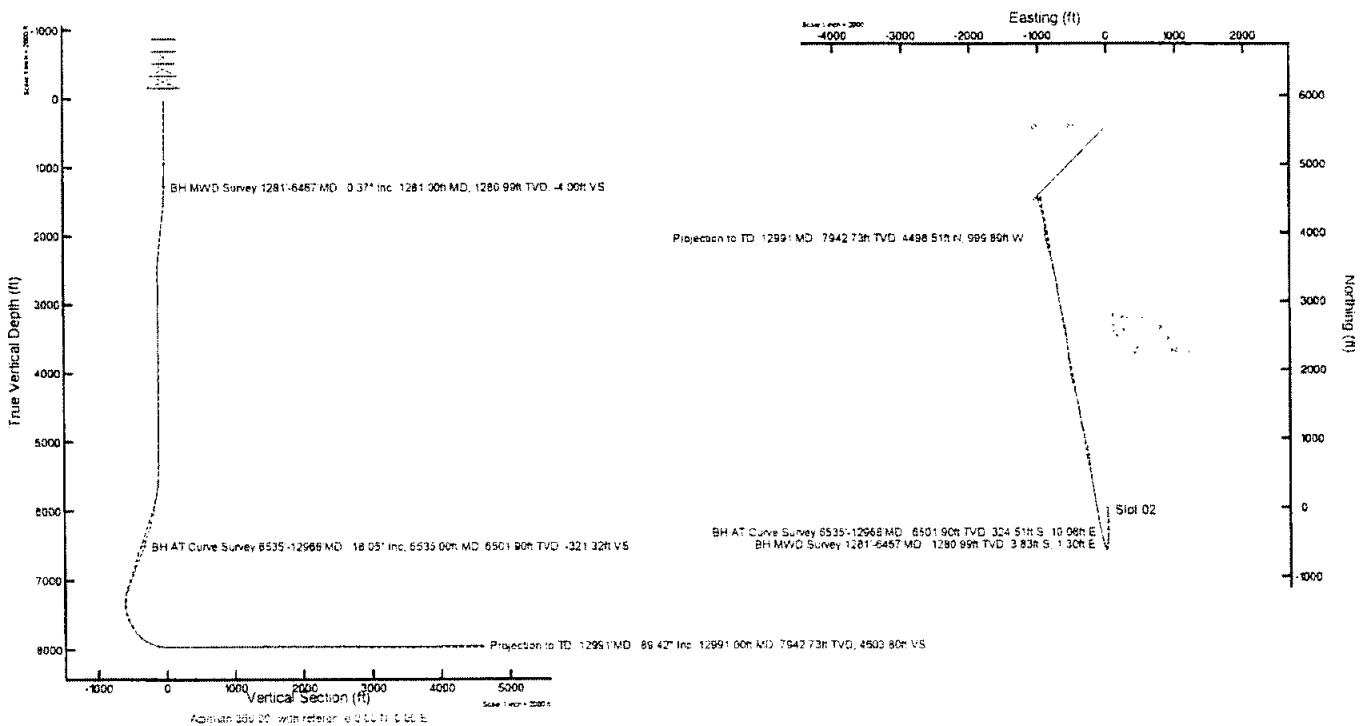


Most Reference Wellpaths is Wright 2H PWB Rev. C.0	
Well Name	Wright 2H PWB
Well Type	Production
Well Status	Active
Well Depth	1280.99h TVD
Well Orientation	0.37° Inc.

Location Information			
Facility Name	Wright Pad	Well Name	Wright 2H PWB
Well ID	1280.99h TVD	Well Depth	1280.99h TVD
Well Type	Production	Well Status	Active
Well Orientation	0.37° Inc.	Well Direction	0.37° Inc.

Planned Well Profile Data									
Design Comment	MD (ft)	TVL (ft)	TVL (ft)	Wellbore	Length (ft)	Depth (ft)	Direction	Inc. (°)	VS (ft)
Top of Hole	1280.99	1280.99	1280.99	1280.99h TVD	1280.99	1280.99	0.37	0.00	1280.99
End of Hole	1280.99	1280.99	1280.99	1280.99h TVD	1280.99	1280.99	0.37	0.00	1280.99

Well Data			
Well Name	Wright 2H PWB	Well Type	Production
Well ID	1280.99h TVD	Well Status	Active
Well Orientation	0.37° Inc.	Well Direction	0.37° Inc.



RECEIVED
 Office of Oil and Gas
 AUG 30 2017
 WV Department of
 Environmental Protection