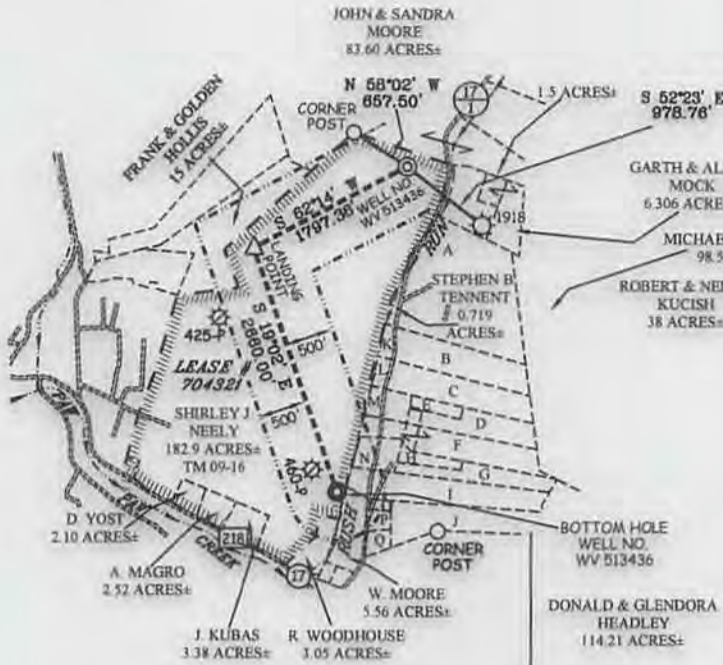


NOTES ON SURVEY

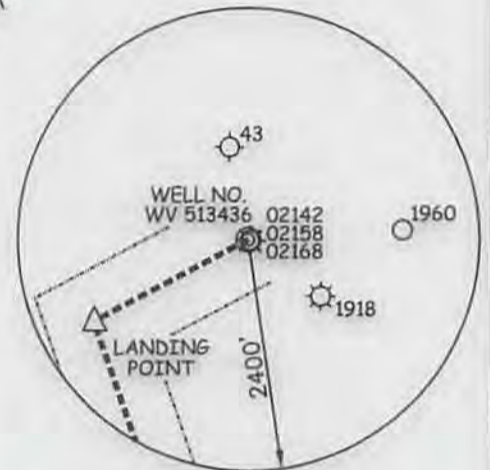
- 1. NO WATER WELLS WERE FOUND WITHIN 250' OF PROPOSED GAS WELL. NO AGRICULTURAL BUILDINGS ≥ 2500 SQ. FT. OR DWELLINGS WERE FOUND WITHIN 625' OF THE CENTER OF PROPOSED WELL PAD.

LEGEND

LEASE LINE	- - - - -
SURFACE LINE	- - - - -
WELL LATERAL	- - - - -
OFFSET LINE	- - - - -
TIE LINE	—————
CREEK	~~~~~
ROAD	—————
COUNTY ROUTE	⊕
STATE ROUTE	⊙
PROPOSED WELL	⊗
EXISTING WELL	⊘
PERMITTED WELL	⊙
TAX MAP-PARCEL	00-00



A - D. TENNANT ET AL	33.99 ACRES±
B - E. TENNANT	10.98 ACRES±
C - H. LAYMAN	9.35 ACRES±
D - C. TENNANT ET AL	8.61 ACRES±
E - C. TENNANT	1.57 ACRES±
F - C. TENNANT ET AL	9.46 ACRES±
G - W. ICE	5.65 ACRES±
H - H. HAUGHT	1.90 ACRES±
I - A. HENDERSON ET AL	11.70 ACRES±
J - D. HEADLEY ET AL	9.86 ACRES±
K - S. TENANT	1.2 ACRES±
L - R. EDDY	1.71 ACRES±
M - F. MARKLEY	2.29 ACRES±
N - R. HUNTER	3.35 ACRES±
O - D. WOOD ET AL	0.608 ACRES±
P - D. ROWAN	1 ACRES±
Q - P. MARKLEY	1.32 ACRES±



**EQT PRODUCTION COMPANY
D. HAUGHT LEASE
190.5 ACRES±
WELL NO. WV 513436**

(S.P.C. NORTH ZONE) (UTM(M) ZONE 17 NORTH)

NAD'27 S.P.C.(FT)	N. 400,932.2	E. 1,793,400.3
NAD'27 GEO.	LAT-(N) 39.598477	LONG-(W) 80.233183
NAD'83 UTM (M)	N. 4,383,483.7	E. 565,854.4

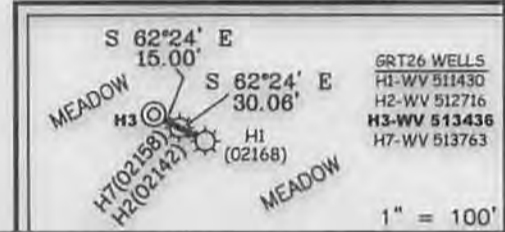
LANDING POINT

NAD'27 S.P.C.(FT)	N. 400,095.1	E. 1,791,809.8
NAD'27 GEO.	LAT-(N) 39.596143	LONG-(W) 80.238803
NAD'83 UTM (M)	N. 4,383,220.6	E. 565,374.2

BOTTOM HOLE

NAD'27 S.P.C.(FT)	N. 397,580.5	E. 1,792,677.2
NAD'27 GEO.	LAT-(N) 39.589259	LONG-(W) 80.235852
NAD'83 UTM (M)	N. 4,382,458.9	E. 565,651.2

REFERENCES



I THE UNDERSIGNED, HEREBY CERTIFY THAT THIS PLAT IS CORRECT TO THE BEST OF MY KNOWLEDGE AND BELIEF AND SHOWS ALL THE INFORMATION REQUIRED BY LAW AND THE REGULATIONS ISSUED AND PRESCRIBED BY THE DIVISION OF ENVIRONMENTAL PROTECTION.

P.S. 849 *C. Victor Moyers*



(+) DENOTES LOCATION OF WELL ON UNITED STATES TOPOGRAPHIC MAPS.

DATE	APRIL 29	20	13
REVISED	AUGUST 06	20	14
OPERATORS WELL NO.	WV 513436		
API WELL NO.	47	049	02345
STATE	COUNTY	PERMIT	

MINIMUM DEGREE OF ACCURACY	1 / 200	FILE NO.	7248P513436R4
HORIZONTAL & VERTICAL CONTROL DETERMINED BY	DGPS (SURVEY GRADE TIE TO CORS NETWORK)		

STATE OF WEST VIRGINIA
DIVISION OF ENVIRONMENTAL PROTECTION
OFFICE OF OIL AND GAS

WELL TYPE: OIL GAS LIQUID INJECTION WASTE DISPOSAL IF "GAS" PRODUCTION STORAGE DEEP SHALLOW

LOCATION: ELEVATION 1,141' WATERSHED RUSH RUN DISTRICT PAW PAW COUNTY MARION QUADRANGLE GRANT TOWN 7.5'

SURFACE OWNER SHIRLEY J. NEELY ACREAGE 182.9± ROYALTY OWNER JUDITH YOST ROBINSON, ET AL ACREAGE 190.5±

PROPOSED WORK: DRILL CONVERT DRILL DEEPER REDRILL FRACTURE OR STIMULATE PLUG OFF OLD FORMATION PERFORATE NEW FORMATION PLUG AND ABANDON CLEAN OUT AND REPLUG OTHER

PHYSICAL CHANGE IN WELL (SPECIFY) _____ TARGET FORMATION MARCELLUS ESTIMATED DEPTH TVD 7561'

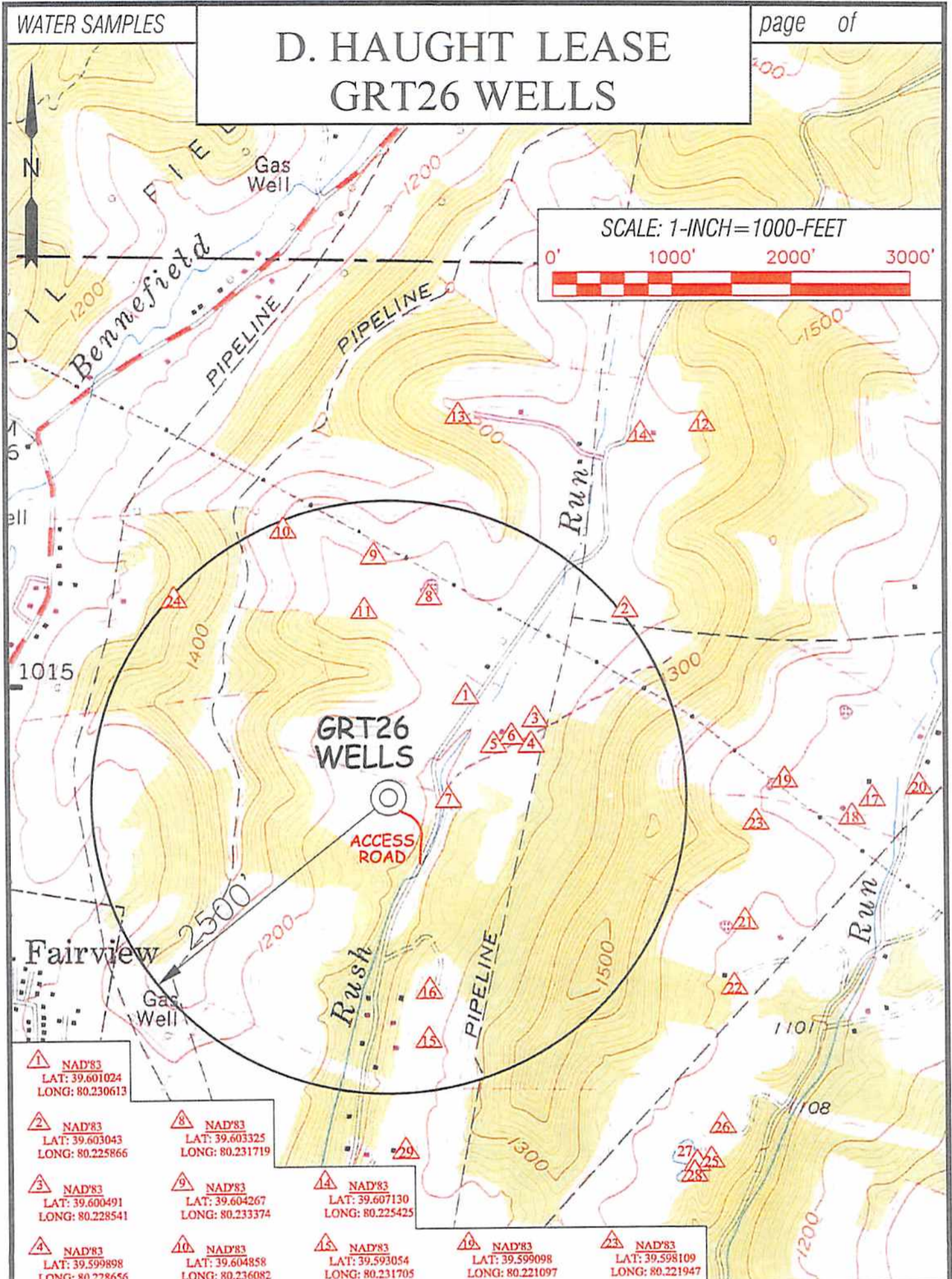
WELL OPERATOR	EQT PRODUCTION COMPANY	DESIGNATED AGENT	REX C. RAY
ADDRESS	115 PROFESSIONAL PLACE P.O. BOX 280 BRIDGEPORT, WV 26330	ADDRESS	115 PROFESSIONAL PLACE P.O. BOX 280 BRIDGEPORT, WV 26330

10/31/2014

WATER SAMPLES

page of

D. HAUGHT LEASE GRT26 WELLS



1 NAD'83 LAT: 39.601024 LONG: 80.230613	8 NAD'83 LAT: 39.603325 LONG: 80.231719	15 NAD'83 LAT: 39.593054 LONG: 80.231705	22 NAD'83 LAT: 39.594292 LONG: 80.222588	29 NAD'83 LAT: 39.590469 LONG: 80.232399
2 NAD'83 LAT: 39.603043 LONG: 80.225866	9 NAD'83 LAT: 39.604267 LONG: 80.233374	16 NAD'83 LAT: 39.594192 LONG: 80.231684	23 NAD'83 LAT: 39.598109 LONG: 80.221947	30 NAD'83 LAT: 39.590178 LONG: 80.223698
3 NAD'83 LAT: 39.600491 LONG: 80.228541	10 NAD'83 LAT: 39.604858 LONG: 80.236082	17 NAD'83 LAT: 39.598669 LONG: 80.218472	24 NAD'83 LAT: 39.603269 LONG: 80.239347	31 NAD'83 LAT: 39.589936 LONG: 80.223771
4 NAD'83 LAT: 39.599898 LONG: 80.228656	11 NAD'83 LAT: 39.603012 LONG: 80.233647	18 NAD'83 LAT: 39.598246 LONG: 80.219072	25 NAD'83 LAT: 39.590257 LONG: 80.223263	32 NAD'83 LAT: 39.591056 LONG: 80.222930
5 NAD'83 LAT: 39.599898 LONG: 80.229777	12 NAD'83 LAT: 39.607375 LONG: 80.223586	19 NAD'83 LAT: 39.598269 LONG: 80.221097	26 NAD'83 LAT: 39.591056 LONG: 80.222930	
6 NAD'83 LAT: 39.600090 LONG: 80.229246	13 NAD'83 LAT: 39.6075427 LONG: 80.230861	20 NAD'83 LAT: 39.598960 LONG: 80.217073		
7 NAD'83 LAT: 39.598626 LONG: 80.2311201	14 NAD'83 LAT: 39.594192 LONG: 80.231684	21 NAD'83 LAT: 39.595797 LONG: 80.222268		

Professional Energy Consultants
A DIVISION OF SARTH LAZAR SERVICES, INC.

SLS
SURVEYORS
ENGINEERS
ENVIRONMENTAL
PROJECT MGMT.

DRAWN BY: K.D.W. FILE NO: 7248 DATE: 07/10/14 CADD FILE: 7248WSCR26.dwg

TOPO SECTION OF:
GRANT TOWN, WV 7.5' QUAD

DISTRICT	COUNTY	TAX MAP-PARCEL NO.
PAW PAW	MARION	09-16

OPERATOR:
EQT PRODUCTION COMPANY
115 PROFESSIONAL PLACE
P.O. BOX 280
BRIDGEPORT, WV 26330

RESERVED Gas
Office of the State Auditor
Department of Environmental Protection