

WV 514746  
EQT Production Company  
Bower et al LEASE  
111.0 Acres ±

Lease No.	Acres	Owner
300884	79	Richard G. Thorne et. al.
993296	35	Rennie David Starkey
991928	34.5	Kennie S. Kettner Jr. et al.
993303	108.5	East Resources Inc. et al.

Latitude: 39° 35' 00"

WV 514746 Well Point Coordinates

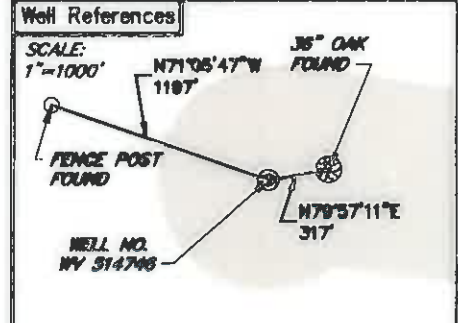
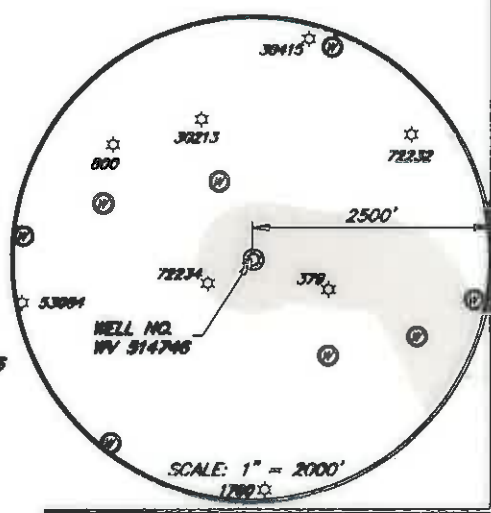
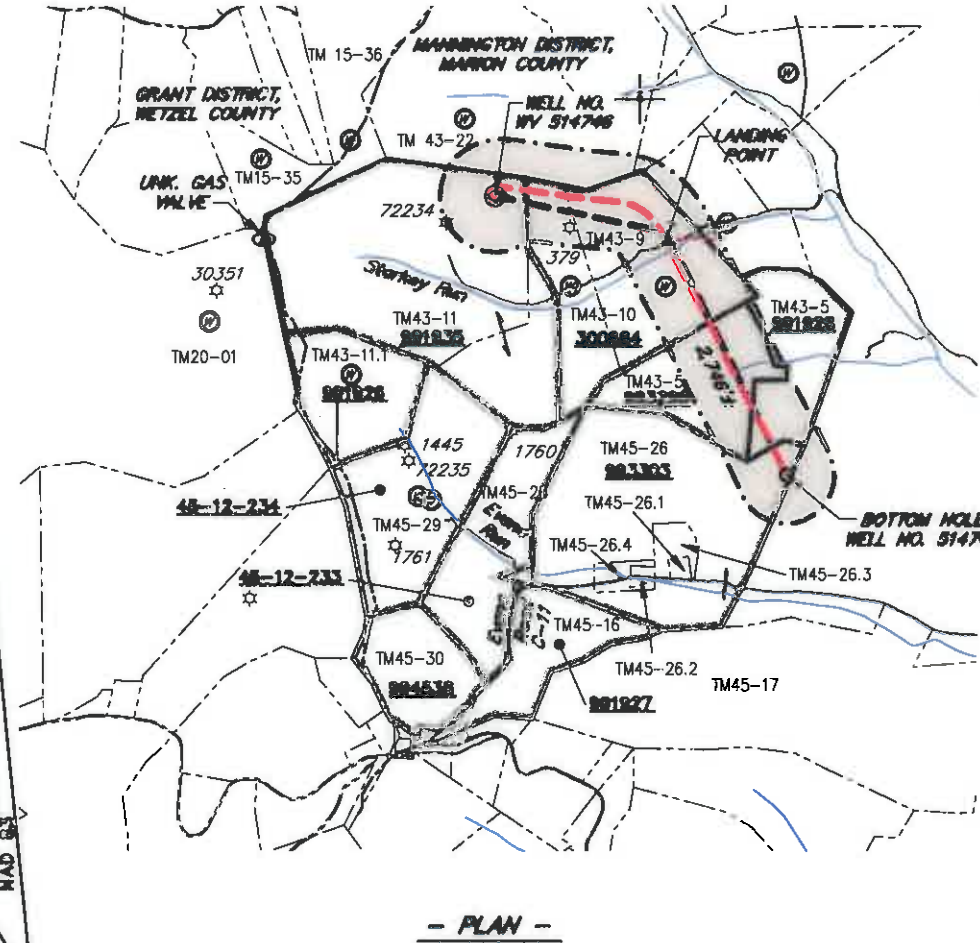
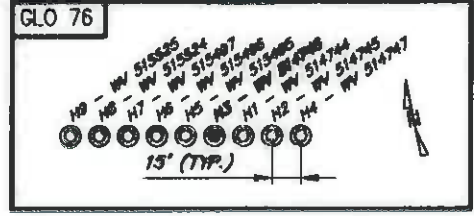
Top Hole Coordinates		
NAD 27 S.P.C. (F.)	N: 388,963.632	E: 1,721,006.643
NAD 27 GRS	LAT: 39.563998	LONG: 81.489594
NAD 83 UTM 17N (M)	N 4,379,439.8	E: 543,858.9
NAD 83 S.P.C. (F.)	N 389,301.3	E: 1,699,561.9
Landing Point Coordinates		
NAD 27 S.P.C. (F.)	N: 388,614.061	E: 1,722,785.305
NAD 27 GRS	LAT: 39.562808	LONG: 81.483286
NAD 83 UTM 17N (M)	N 4,379,372.0	E: 544,402.9
NAD 83 S.P.C. (F.)	N 388,682.3	E: 1,691,346.6
Bottom Hole Coordinates		
NAD 27 S.P.C. (F.)	N: 388,169.552	E: 1,724,036.215
NAD 27 GRS	LAT: 39.556134	LONG: 81.478755
NAD 83 UTM 17N (M)	N 4,378,638.5	E: 544,798.4
NAD 83 S.P.C. (F.)	N 388,207.1	E: 1,692,397.4

Longitude: 80° 27' 30"

**LEGEND**

- ☆ EXISTING OIL/GAS WELL
- ⊙ WATER FEATURE
- ⊙ WELL HEAD TOP HOLE
- ⊙ WELL LANDING POINT
- ⊙ WELL BOTTOM HOLE
- REBAR FOUND
- STONE FOUND
- - - DRILLED LATERAL LINE
- - - PERMITTED LATERAL LINE
- - - LEASE BOUNDARY
- - - BUFFER
- - - PROPERTY LINE
- - - STREAM
- - - 300' LATERAL COLLECTION

**Coordinate Notes**  
West Virginia Coordinate System of 1927 (North Zone) Based upon Differential GPS Measurements.  
Flat orientation, Corner and well ties are based upon the grid north meridian.  
Well location references are based upon the grid north meridian.  
UTM Coordinates are NAD83, Zone 17 Meters.



(+) DENOTES LOCATION OF WELL ON UNITED STATES TOPOGRAPHIC MAPS



I, THE UNDERSIGNED, HEREBY CERTIFY THAT THIS PLAT IS CORRECT TO THE BEST OF MY KNOWLEDGE AND BELIEF AND SHOWS ALL THE INFORMATION REQUIRED BY LAW AND REGULATIONS ISSUED AND PRESCRIBED BY THE DEPARTMENT OF ENVIRONMENTAL PROTECTION.

*William J. Whitman, II*



FILE NO.: EES-60635  
DRAWING NO.: GLO76 Well Plat  
SCALE: 1" = 2000'  
MINIMUM DEGREE OF ACCURACY: ±3'  
PROVEN SOURCE OF ELEVATION: GPS

STATE OF WEST VIRGINIA  
DEPARTMENT OF ENVIRONMENTAL PROTECTION  
OFFICE OF OIL AND GAS

DATE: APRIL 18, 2016  
OPERATORS WELL NO. WV 514746  
API WELL NO. 47 049 02347  
STATE COUNTY PERMIT

WELL TYPE:  OIL  GAS  LIQUID INJECTION  WASTE DISPOSAL  (IF GAS) PRODUCTION:  STORAGE  DEEP  SHALLOW  
LOCATION, ELEVATION: 1424' (Ground) 1455' (Prop.) WATERSHED: Starkey Run QUADRANGLE: GLO76 2016  
DISTRICT: MANNINGTON COUNTY: Marion  
SURFACE OWNER: Robert E. Tonkery ACREAGE: 111.00± AC  
ROYALTY OWNER: Lynn Ann Brower, et al LEASE NO.: 991935 ACREAGE: 111.00± AC  
PROPOSED WORK:  DRILL  CONVERT  DRILL DEEPER  FRACTURE OR STIMULATE  PLUG OFF  SHUT-IN  
 PERFORATE NEW FORMATION  OTHER PHYSICAL CHANGE IN WELL (SPECIFY)  
 PLUG AND ABANDON  CLEAN OUT AND REPLUG TARGET FORMATION: MARCELLUS ESTIMATED DEPTH: 7,640'

WELL OPERATOR: EQT Production Company DESIGNATED AGENT: Rex C. Roy  
ADDRESS: 115 Professional Pl. P.O. Box 280 ADDRESS: 115 Professional Pl. P.O. Box 280  
Bridgeport, WV 26330 Bridgeport, WV 26330

WWW.ENCOMPASSSERVICES.COM PLAT DATE: 4/19/2016 CAD FILE: GLO76\_WELL PLAT\_2016-04-18.DWG