

4902371P

WW-7
8-30-06



West Virginia Department of Environmental Protection
Office of Oil and Gas
WELL LOCATION FORM: GPS

API: 47-049- WELL NO.: 3940

FARM NAME: Wilson Nav

RESPONSIBLE PARTY NAME: Consolidation Coal Company

COUNTY: Marion DISTRICT: Mannington

QUADRANGLE: Mannington

SURFACE OWNER: Consolidation Coal Company

ROYALTY OWNER: _____

UTM GPS NORTHING: 4,376,587 m

UTM GPS EASTING: 554,616 m GPS ELEVATION: 396 m (298.3')

The Responsible Party named above has chosen to submit GPS coordinates in lieu of preparing a new well location plat for a plugging permit or assigned API number on the above well. The Office of Oil and Gas will not accept GPS coordinates that do not meet the following requirements:

- Datum: NAD 1983, Zone: 17 North, Coordinate Units: meters, Altitude: height above mean sea level (MSL) – meters.
- Accuracy to Datum – 3.05 meters
- Data Collection Method:
Survey grade GPS _____: Post Processed Differential _____
Real-Time Differential _____
Mapping Grade GPS X: Post Processed Differential X
Real-Time Differential _____
- Letter size copy of the topography map showing the well location.**

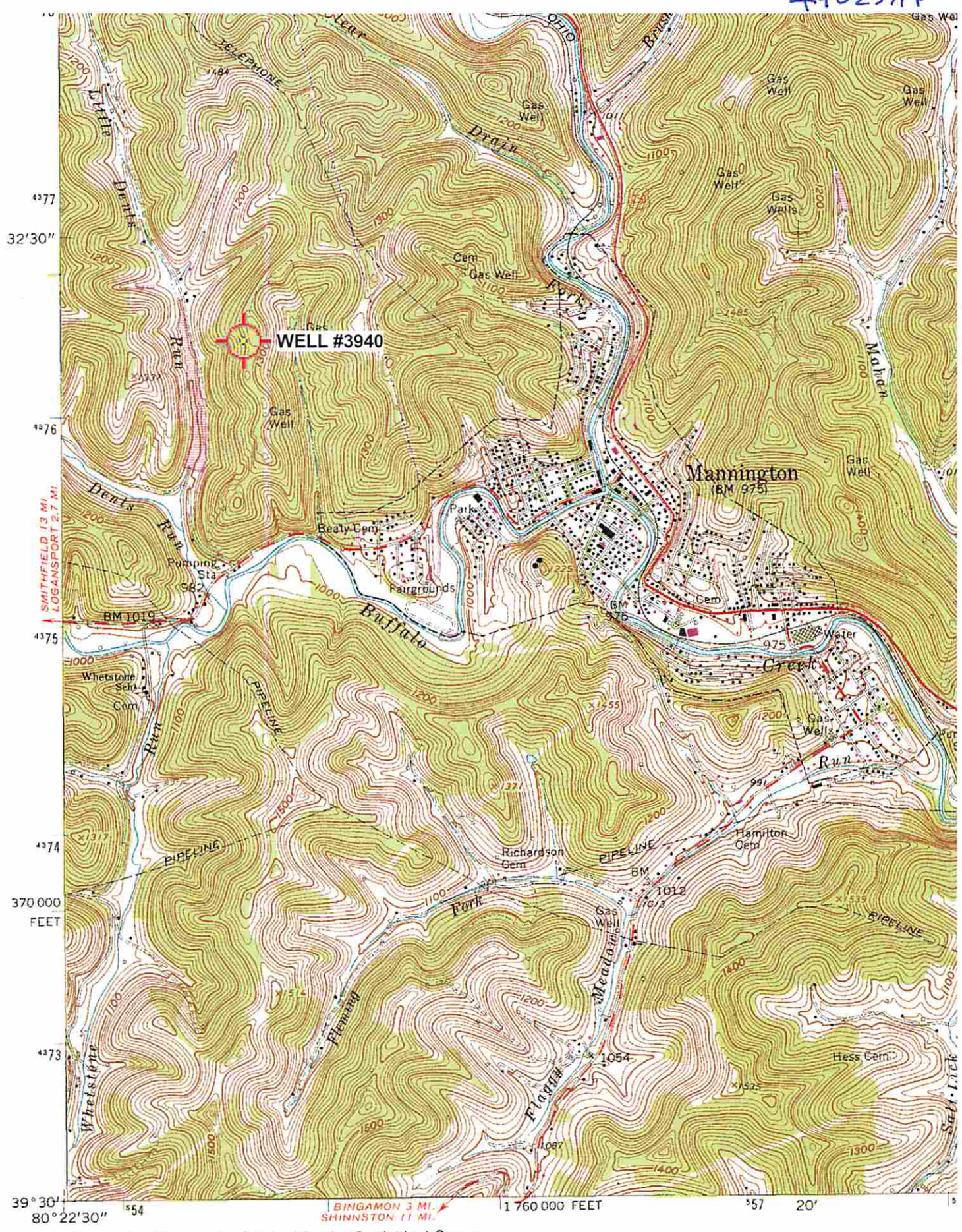
I the undersigned, hereby certify this data is correct to the best of my knowledge and belief and shows all the information required by law and the regulations issued and prescribed by the Office of Oil and Gas.

[Signature]
Signature
December 7, 2014
Date

Professional Surveyor
Title

RECEIVED
Office of Oil and Gas
DEC 11 2014
WV Department of
Environmental Protection

4902371 P



Mapped, edited, and published by the Geological Survey

Control by USGS and USC&GS

Topography by photogrammetric methods from aerial photographs taken 1957. Field checked 1960

Polyconic projection. 1927 North American datum
10,000-foot grid based on West Virginia coordinate system,
'Mannington; WV' Scale: 1" = 0.379Mi 610Mt 2,000Ft, 1 Mi = 2.640", 1 cm = 240Mt

(WALLACE)
4902371 NW

