

8,800'

Latitude: 39° 35' 00"

WV 514747
EQT Production Company
Bower et al LEASE
111.0 Acres ±

Lease No.	Acres	Owner
300684	79	Richard G. Thorne et. al.
993296	35	Ronnie David Starkey
993303	106.5	East Resources Inc. et. al.

WV 514747 Well Point Coordinates

Top Hole Coordinates		
NAD 27 S.P.C. (Ft.)	N: 389,056.1	E: 1,721,044.74
NAD 27 GEO	LAT: 39.56392	LONG: 80.489477
NAD 83 UTM 17N (M)	N 4,379,497.2	E: 543,870.4
NAD 83 S.P.C. (Ft.)	N 389,092.3	Z: 1,689,606.0

Landing Point Coordinates		
NAD 27 S.P.C. (Ft.)	N: 388,805.31	E: 1,721,885.18
NAD 27 GEO	LAT: 39.563305	LONG: 80.486486
NAD 83 UTM 17N (M)	N 4,379,207.0	E: 544,112.6
NAD 83 S.P.C. (Ft.)	N 388,842.9	E: 1,690,446.4

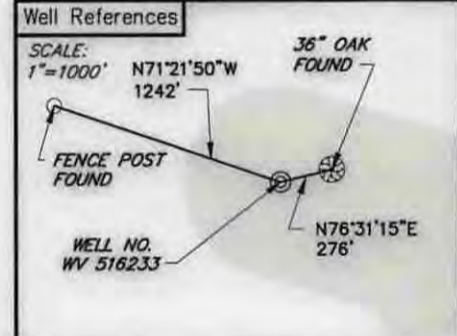
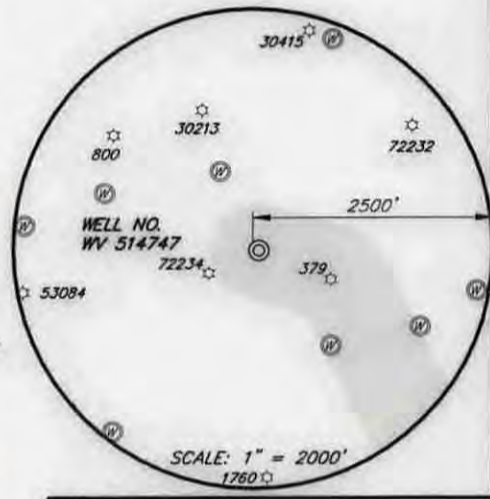
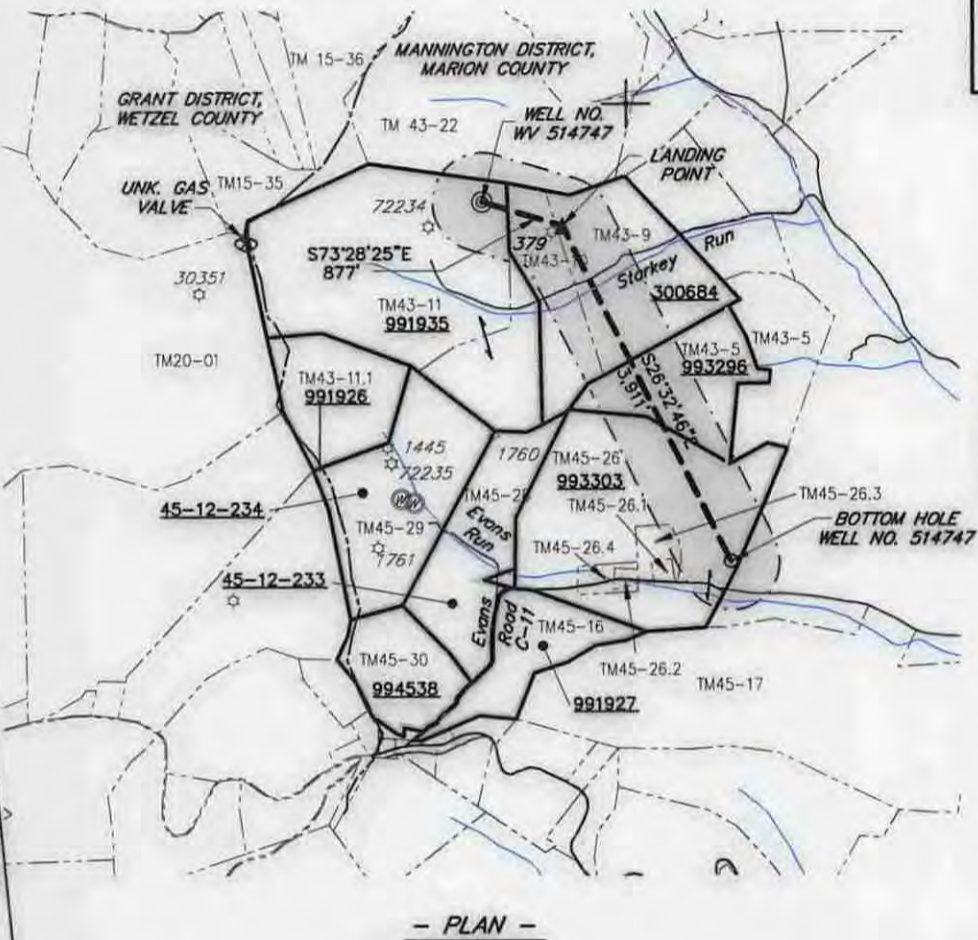
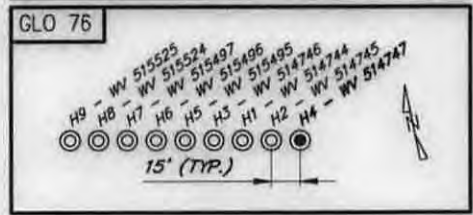
Bottom Hole Coordinates		
NAD 27 S.P.C. (Ft.)	N: 385,306.78	E: 1,723,633.14
NAD 27 GEO	LAT: 39.553753	LONG: 80.480151
NAD 83 UTM 17N (M)	N 4,378,368.6	E: 544,678.0
NAD 83 S.P.C. (Ft.)	N 385,344.4	E: 1,692,194.3

Longitude: 80° 27' 30"

LEGEND

- ☆ EXISTING OIL/GAS WELL
- ⊙ WATER FEATURE
- ⊙ WELL HEAD TOP HOLE
- ▲ WELL LANDING POINT
- WELL BOTTOM HOLE
- REBAR FOUND
- STONE FOUND
- WELL LATERAL LINE
- LEASE BOUNDARY
- BUFFER
- PROPERTY LINE
- STREAM
- 500' LATERAL COLLECTION

Coordinate Notes
West Virginia Coordinate System of 1927 (North Zone) Based upon Differential GPS Measurements.
Plat orientation, Corner and well ties are based upon the grid north meridian.
Well location references are based upon the grid north meridian.
UTM Coordinates are NAD83, Zone 17 Meters.



(+) DENOTES LOCATION OF WELL ON UNITED STATES TOPOGRAPHIC MAPS



I, THE UNDERSIGNED, HEREBY CERTIFY THAT THIS PLAT IS CORRECT TO THE BEST OF MY KNOWLEDGE AND BELIEF AND SHOWS ALL THE INFORMATION REQUIRED BY LAW AND REGULATIONS ISSUED AND PRESCRIBED BY THE DEPARTMENT OF ENVIRONMENTAL PROTECTION.



FILE NO.: EES-60635
DRAWING NO.: GLO76_Well Plat
SCALE: 1" = 2000'
MINIMUM DEGREE OF ACCURACY: ±3'
PROVEN SOURCE OF ELEVATION: GPS

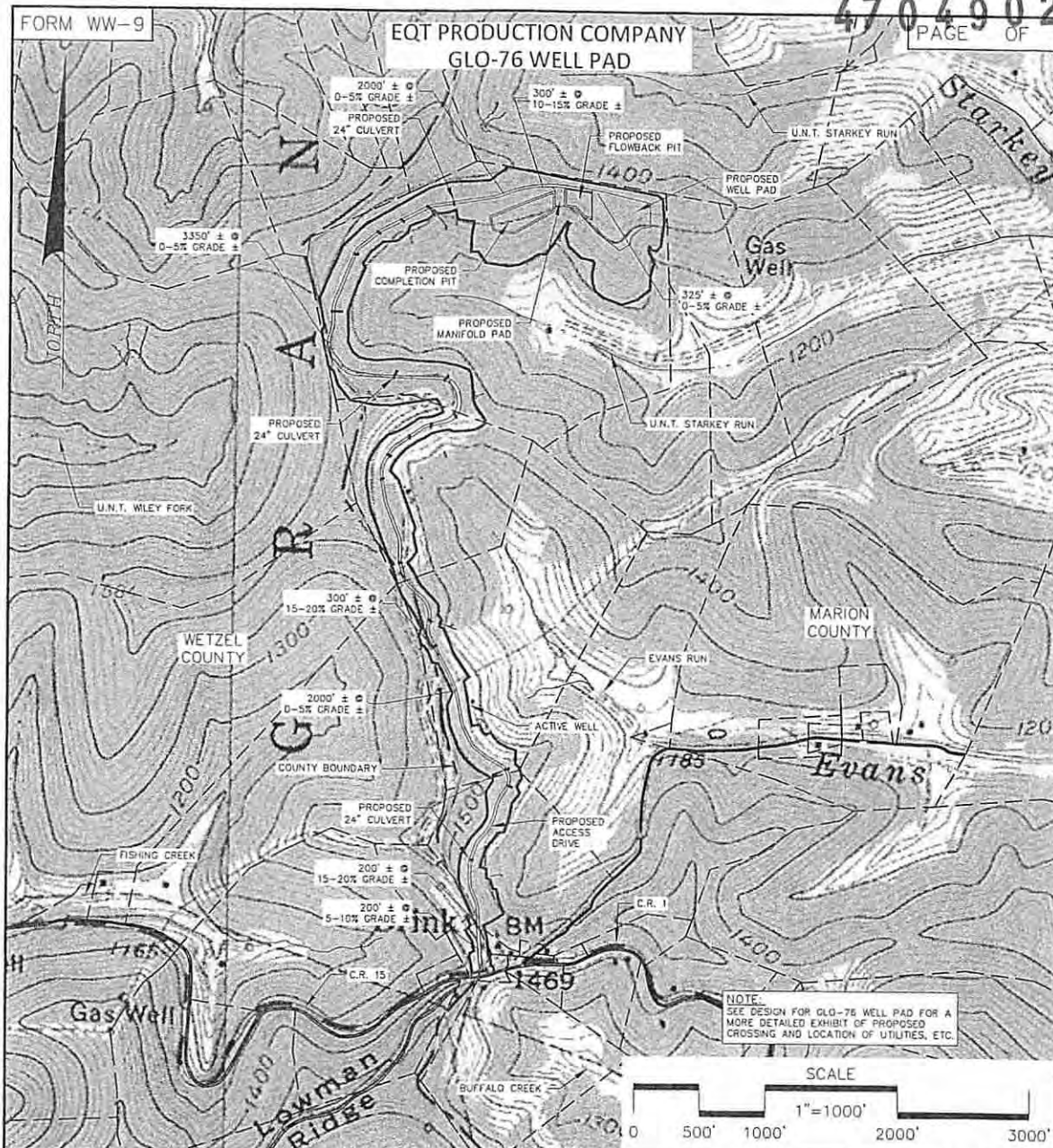
STATE OF WEST VIRGINIA
DEPARTMENT OF ENVIRONMENTAL PROTECTION
OFFICE OF OIL AND GAS

DATE: MAY 28, 2015
OPERATORS WELL NO. WV 514747
API WELL NO. 47 049 02401
STATE COUNTY PERMIT

WELL TYPE: OIL GAS LIQUID INJECTION WASTE DISPOSAL (IF GAS) PRODUCTION STORAGE DEEP SHALLOW
LOCATION, ELEVATION: 1455' (Ground) 1425' (Prop.) WATERSHED: Starkey Run QUADRANGLE: GLOVER GAP, WV
DISTRICT: MANNINGTON COUNTY: Marion
SURFACE OWNER: Robert E. Tonkery ACREAGE: 111.00± AC
ROYALTY OWNER: Lynn Ann Brower, et al LEASE NO.: 991935 ACREAGE: 111.00± AC
PROPOSED WORK: DRILL CONVERT DRILL DEEPER FRACTURE OR STIMULATE PLUG OFF OLD FORMATION
 PERFORATE NEW FORMATION OTHER PHYSICAL CHANGE IN WELL (SPECIFY)
 PLUG AND ABANDON CLEAN OUT AND REPLUG TARGET FORMATION: MARCELLUS ESTIMATED DEPTH: 7,649'

WELL OPERATOR: EQT Production Company DESIGNATED AGENT: Rex C. Ray
ADDRESS: 115 Professional Pl., P.O. Box 280 ADDRESS: 115 Professional Pl., P.O. Box 280
Bridgeport, WV 26330 Bridgeport, WV 26330

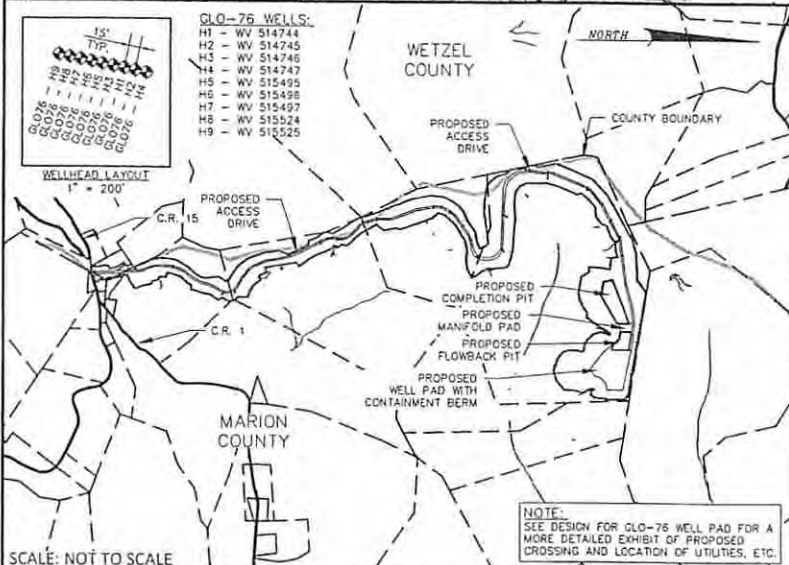
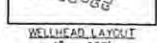
WWW.ENCOMPASSSERVICES.COM PLOT DATE: 5/28/2015 CAD FILE: GLO76_WELL PLAT_05-28-2015.DWG



WRH
6-3-15

GLO-76 WELLS:

H1	-	WV 514744
H2	-	WV 514745
H3	-	WV 514746
H4	-	WV 514747
H5	-	WV 515498
H6	-	WV 515498
H7	-	WV 515497
H8	-	WV 515524
H9	-	WV 515525



ALL ROADS SHOWN ARE EXISTING UNLESS OTHERWISE NOTED AND SHALL BE MAINTAINED IN ACCORDANCE WITH WV DEP OIL AND GAS BMP MANUAL. ENTRANCES AT COUNTY/STATE ROADS SHALL BE MAINTAINED IN ACCORDANCE WITH WV DOT REGULATION SEPARATE PERMITS MAY BE REQUIRED BY DOT.

SEDIMENT BASINS (TRAPS) AND APPROPRIATE EROSION CONTROL BARRIERS ARE TO BE CONSTRUCTED AT ALL CULVERT AND CROSS DRAIN INLETS AND OUTLETS AS REQUIRED IN THE WV DEP OIL AND GAS BMP MANUAL. FIELD CONDITIONS (ROCK OUTCROPS AND BEDROCK) MAY PROHIBIT INLET TRAPS BEING INSTALLED. WHEN THESE CONDITIONS EXIST, ADDITIONAL EROSION CONTROL MEASURES SHALL BE EVALUATED AND UTILIZED AS NEEDED.

EARTHWORK CONTRACTORS ARE RESPONSIBLE FOR NOTIFICATION TO THE OPERATOR AND INSPECTOR PRIOR TO ANY DEVIATION FROM THIS PLAN.

TEMPORARY SEED AND MULCH ALL SLOPES AFTER CONSTRUCTION OF LOCATION.

CUT AND STACK ALL MARKETABLE TIMBER.

STACKED BRUSH MAY BE USED FOR SEDIMENT CONTROL.

APPLICATIONS FOR SEPARATE PLC PERMITS ON THE ACCESS ROAD STREAM CROSSINGS HAVE BEEN PREPARED (IF APPLIES).

- = PROPOSED CULVERT 18" MIN UNLESS OTHERWISE NOTED
- = EXISTING CULVERT
- = APPROXIMATE LIMIT OF DISTURBANCE

SCALE: NOT TO SCALE

CONSTRUCTION AND RECLAMATION PLAN
GLO-76 WELL PAD
GRANT & MANNINGTON TAX DISTRICTS

EQT RETTEW
RETTEW Associates, Inc
One Robinson Plaza
Suite 200
8600 Steubenville Pike
Pittsburgh, PA 15205
Where energy meets innovation.

DRAWN BY: KRM
DATE: 3/05/2015
SCALE: AS NOTED

RECEIVED
Office of Oil and Gas

JUN 10 2015

WV Department of

07/24/2015