

- Proposed Gas Well
- Located Corner, as noted
- Surface Tract Lines
- - - Reference Line
- Lease Boundary
- Creek or Drain
- Ⓢ WV County Route
- Ⓢ WV State Route

(*) Denotes Location of Well on United States Topographic Maps



I, the undersigned, hereby certify that this plat is correct to the best of my knowledge and belief and shows all the information required by law and the regulations issued and prescribed by the Department of Environmental Protection.

Ben R. Singleton
P.S. 2092



SEAL

FILE NO: 92-21
DRAWING NO: Carnegie 17H
SCALE: 1" = 2000'
MINIMUM DEGREE OF ACCURACY: 1:2500
PROVEN SOURCE OF ELEVATION: NGS CORS Station

STATE OF WEST VIRGINIA
DEPARTMENT OF ENVIRONMENTAL PROTECTION
OIL AND GAS DIVISION

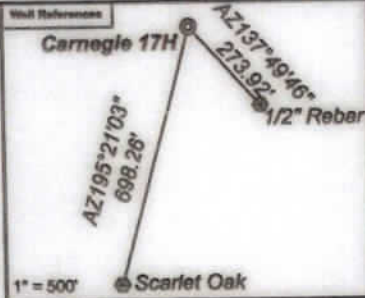
DATE: January 16 20 24
OPERATOR'S WELL NO.: Carnegie 17H
API WELL NO
47 - 049 - 02528
STATE COUNTY PERMIT

WELL TYPE: OIL GAS LIQUID INJECTION WASTE DISPOSAL
(IF GAS) PRODUCTION: STORAGE DEEP SHALLOW
LOCATION: ELEVATION: As-Built: 1318' WATERSHED: Laurel Run of Owen Davy Fork QUADRANGLE: Glover Gap
DISTRICT: Mannington COUNTY: Marion
SURFACE OWNER: Jeanne A. Musgrave Akers & Joseph Forte ACREAGE: 135
ROYALTY OWNER: Bounty Minerals, LLC, et al. LEASE NO: 112106000 ACREAGE: 135
PROPOSED WORK: DRILL CONVERT DRILL DEEPER FRACTURE OR STIMULATE PLUG OFF OLD FORMATION
 PERFORATE NEW FORMATION OTHER PHYSICAL CHANGE IN WELL (SPECIFY)
 PLUG AND ABANDON CLEAN OUT AND REPLUG TARGET FORMATION: Marcellus ESTIMATED DEPTH: 6489'

WELL OPERATOR: EQT Production Company DESIGNATED AGENT: Joseph C. Mallow
ADDRESS: 400 Woodcliff Drive ADDRESS: 427 Midstate Drive
Canonsburg, PA 15317 Clarksburg, WV 25301

**Carnegie 17H
Carnegie
EQT Production Company**

Tract ID	Tract Area	Plat No.	County	Owner	Acres
1	49	39	Marion	Marion Mannington	28.06
2	49	37	Marion	Marion Mannington	51.5
3	49	33.1	Marion	Marion Mannington	23.9
4	49	40	Marion	Marion Mannington	36
5	50	34	Marion	Marion Mannington	28
6	50	35	Marion	Marion Mannington	5.81
7	50	36	Marion	Marion Mannington	0.46
8	50	17	Marion	Marion Mannington	0.32
9	48	13	Marion	Marion Mannington	1.1
10	48	13.2	Marion	Marion Mannington	0.73
11	49	13.1	Marion	Marion Mannington	2.02
17	49	38	Marion	Marion Mannington	30
54	41	26	Marion	Marion Mannington	41.05
60	41	21	Marion	Marion Mannington	50
84	43	14	Marion	Marion Mannington	61
88	43	16	Marion	Marion Mannington	42
90	37	9	Marion	Marion Mannington	27.219
95	44	20	Marion	Marion Mannington	40
97	50	17	Marion	Marion Mannington	180.09
98	49	12	Marion	Marion Mannington	116.825
99	49	41	Marion	Marion Mannington	39
100	49	42	Marion	Marion Mannington	40.2
101	49	11	Marion	Marion Mannington	38.2
102	49	8	Marion	Marion Mannington	40.21
103	37	14	Marion	Marion Mannington	19.79
104	37	13	Marion	Marion Mannington	17.73
105	49	13	Marion	Marion Mannington	7.85
106	49	12.1	Marion	Marion Mannington	4.175
107	49	15	Marion	Marion Mannington	2.5
108	37	18.2	Marion	Marion Mannington	13.71
109	37	15	Marion	Marion Mannington	23.1
110	37	26	Marion	Marion Mannington	40.15
111	37	9.2	Marion	Marion Mannington	0.38
112	37	13.1	Marion	Marion Mannington	12.28
113	37	17	Marion	Marion Mannington	1.8
114	37	11	Marion	Marion Mannington	1.14
115	37	16	Marion	Marion Mannington	35
116	37	28	Marion	Marion Mannington	91
117	37	1.7	Marion	Marion Mannington	86.09
118	37	10	Marion	Marion Mannington	31
119	37	17.1	Marion	Marion Mannington	1.46
120	37	27.2	Marion	Marion Mannington	1.7
121	37	27.1	Marion	Marion Mannington	5.17
122	37	25	Marion	Marion Mannington	13.71
123	37	22	Marion	Marion Mannington	166.83
124	37	18	Marion	Marion Mannington	31.65
125	37	20	Marion	Marion Mannington	NA
126	37	3	Marion	Marion Mannington	49.25
127	37	5	Marion	Marion Mannington	14.6
128	37	2.7	Marion	Marion Mannington	1.07
129	37	2.5	Marion	Marion Mannington	1.07
130	37	2.1	Marion	Marion Mannington	2.83
131	44	27	Marion	Marion Mannington	23.226
132	37	21	Marion	Marion Mannington	1.05
133	37	23.1	Marion	Marion Mannington	13.171
134	37	13.1	Marion	Marion Mannington	16.56
135	37	13.2	Marion	Marion Mannington	1
136	37	13.3	Marion	Marion Mannington	13.87
137	44	1	Marion	Marion Mannington	107.3
138	44	7	Marion	Marion Mannington	1
139	44	4	Marion	Marion Mannington	54.33
140	44	24.1	Marion	Marion Mannington	43.76
141	41	21	Marion	Marion Mannington	16.27
142	41	6	Marion	Marion Mannington	30
143	44	5	Marion	Marion Mannington	24.51
144	44	9	Marion	Marion Mannington	62
145	38	10	Marion	Marion Mannington	176.15
146	38	10.1	Marion	Marion Mannington	1.15
147	38	11	Marion	Marion Mannington	115
148	38	8	Marion	Marion Mannington	64.76
149	38	8.1	Marion	Marion Mannington	7.09
150	41	6	Marion	Marion Mannington	15.5
151	41	7	Marion	Marion Mannington	15
152	41	9	Marion	Marion Mannington	13.73
153	44	10	Marion	Marion Mannington	0.49
154	44	4.1	Marion	Marion Mannington	0.67

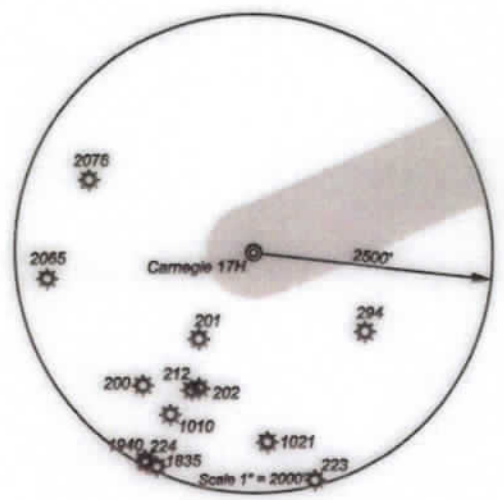


Notes:
 Carnegie 17H coordinates are
 NAD 27 N: 374,323.02 E: 1,735,849.88
 NAD 27 Lat: 39.523956 Long: -80.436421
 NAD 83 UTM N: 4,375,084.28 E: 548,455.72
 Carnegie 17H Landing Point coordinates are
 NAD 27 N: 376,432.31 E: 1,739,132.54
 NAD 27 Lat: 39.520841 Long: -80.424862
 NAD 83 UTM N: 4,375,743.59 E: 549,445.13
 Carnegie 17H Bottom Hole coordinates are
 NAD 27 N: 377,209.64 E: 1,738,770.12
 NAD 27 Lat: 39.531964 Long: -80.426175
 NAD 83 UTM N: 4,375,978.57 E: 549,330.77
 West Virginia Coordinate system of 1927 (North Zone)
 based upon Differential GPS Measurements.
 Plat orientation, corner and well ties are based upon
 the grid north meridian.
 Well location references are based upon the grid north
 meridian.
 UTM coordinates are NAD83, Zone 17, Meters.

Carnegie

Carnegie 18H	Carnegie 19H
Carnegie 16H	Carnegie 17H
Carnegie 14H	Carnegie 15H
Carnegie 12H	Carnegie 13H
Carnegie 10H	Carnegie 11H
Carnegie 8H	Carnegie 9H
Carnegie 6H	Carnegie 7H
Carnegie 4H	Carnegie 5H
Carnegie 2H	Carnegie 3H
	Carnegie 1H

Lease No.	Owner	Acres
112106000	Bounty Minerals, LLC, et al.	135
116966000	Judith Ann Myers, et al.	36
116261004	Sarahbeth Lamm, et al.	123
234751000	West Virginia Department of Transportation, Division of Highways	45.88



I, the undersigned, hereby certify that this plat is correct to the best of my knowledge and belief and shows all the information required by law and the regulations issued and prescribed by the Department of Environmental Protection.

Ben R. Singleton
 P.S. 2092



FILE NO: 92-21
 DRAWING NO: Carnegie 17H
 SCALE: 1" = 2000'
 MINIMUM DEGREE OF ACCURACY: 1:2500
 PROVEN SOURCE OF ELEVATION: NGS CORS Station



DATE: January 16 20 24
 OPERATOR'S WELL NO.: Carnegie 17H
 API WELL NO
 47 - 049 - 02528
 STATE COUNTY PERMIT

WELL TYPE: OIL GAS LIQUID INJECTION WASTE DISPOSAL
 (IF GAS) PRODUCTION: STORAGE DEEP SHALLOW
 LOCATION: ELEVATION: As-Built: 1316' WATERSHED: Laurel Run of Owen Davy Fork QUADRANGLE: Glover Gap
 DISTRICT: Mannington COUNTY: Marion
 SURFACE OWNER: Jeanne A. Musgrave Akers & Joseph Forte ACRES: 02/16/2024
 ROYALTY OWNER: Bounty Minerals, LLC, et al. LEASE NO: 112106000 ACREAGE: 135
 PROPOSED WORK: DRILL CONVERT DRILL DEEPER FRACTURE OR STIMULATE PLUG OFF OLD FORMATION
 PERFORATE NEW FORMATION OTHER PHYSICAL CHANGE IN WELL (SPECIFY)
 PLUG AND ABANDON CLEAN OUT AND REPLUG TARGET FORMATION: Marcellus ESTIMATED DEPTH: 6489'

WELL OPERATOR: EQT Production Company DESIGNATED AGENT: Joseph C. Mallow
 ADDRESS: 400 Woodcliff Drive ADDRESS: 427 Midstate Drive
 Canonsburg, PA 15317 Clarksburg, WV 25301