

4704902603



4391

40'

4389

4388000mN

120 000 FEET (PA.)

39°37'30"

80°22'30"

(MANNINGTON)
4983 III SE

5 MI. 3 MI. 25' 1:250 000 FEET (PA.) 51

INTERIOR-CLIMATICAL SURVEY, RESTON, VIRGINIA-1977
552 553000mE

1 MILE
7 FEET

RECEIVED
Office Of Oil and Gas
OCT 14 2025
WV Department of
Environmental Protection



QUADRANGLE LOCATION

ROAD CLASSIFICATION

Heavy duty
Medium-duty

Light duty
Unimproved dirt

U S Route

State Route

HUNDRED, W. VA.-PA.
NW/4 MANNINGTON 15' QUADRANGLE
N 3937.5 - W 8022.5/7.5

1958

PHOTO REVISIED 1978

10/31/2025

Revisions shown in purple compiled from aerial photographs
'Hundred; WV,PA' Scale: 1" = 0.379Mi 610M 2,000Ft, 1 Mi = 2.640", 1 cm = 240M

WELL#4721

Hundred WV/PA 7.5' Quad

Scale: 1" = 500'



Oil Well

WELL#4721

Oil Well

1300

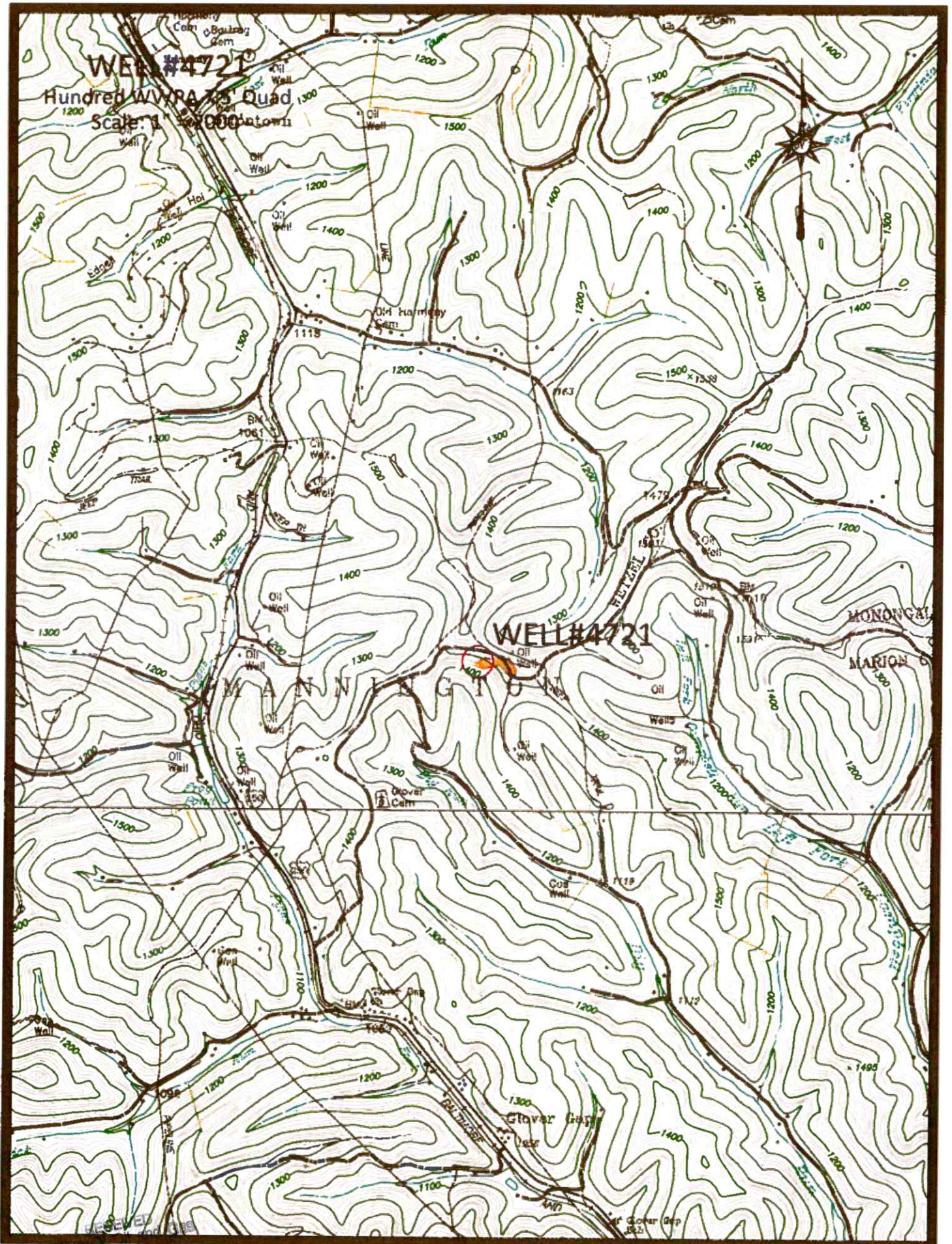
Big Run

1400

Glover
CemRECEIVED
Office Of Oil and Gas
OCT 14 2025
WV Department of
Environmental Protection

Access Road

10/31/2025



OCT 14 2025

Access Road

10/31/2025

10/31/2025

WW-7
8-30-06



West Virginia Department of Environmental Protection
Office of Oil and Gas
WELL LOCATION FORM: GPS

API: 47-049-70476 WELL NO.: 4721
FARM NAME: S G ASH 1
RESPONSIBLE PARTY NAME: WEST VIRGINIA LAND RESOURCES INC.
COUNTY: MARION DISTRICT: MANNINGTON
QUADRANGLE: HUNDRED WV, PA
SURFACE OWNER: STEVEN L. BARNS ET AL
ROYALTY OWNER: _____
UTM GPS NORTHING: 4,387,078 m
UTM GPS EASTING: 550,909 m GPS ELEVATION: 444 m

The Responsible Party named above has chosen to submit GPS coordinates in lieu of preparing a new well location plat for a plugging permit or assigned API number on the above well. The Office of Oil and Gas will not accept GPS coordinates that do not meet the following requirements:

1. Datum: NAD 1983, Zone: 17 North, Coordinate Units: meters, Altitude: height above mean sea level (MSL) meters.
2. Accuracy to Datum – 3.05 meters
3. Data Collection Method:
Survey grade GPS _____: Post Processed Differential _____

RECEIVED
Office Of Oil and Gas

OCT 14 2025

WV Department of
Environmental Protection

Real-Time Differential _____
Mapping Grade GPS X: Post Processed Differential X
Real-Time Differential _____

4. Letter size copy of the topography map showing the well location.

I the undersigned, hereby certify this data is correct to the best of my knowledge and belief and shows all the information required by law and the regulations issued and prescribed by the Office of Oil and Gas.

Signature

PS 2002

Title

OCTOBER 3, 2025

Date

10/31/2025