

LATITUDE 39 35

LONGITUDE 86 05

1.72 S
2.04 W

7'5 OGIS topo location

7.5' loc _____ 15' loc _____
(calc.) _____

Company _____

Farm LAWRENCE BAKER 107

Quad RIVESVILLE

County MARION

District Paw Paw

WELL LOCATION MAP

File No. 30093

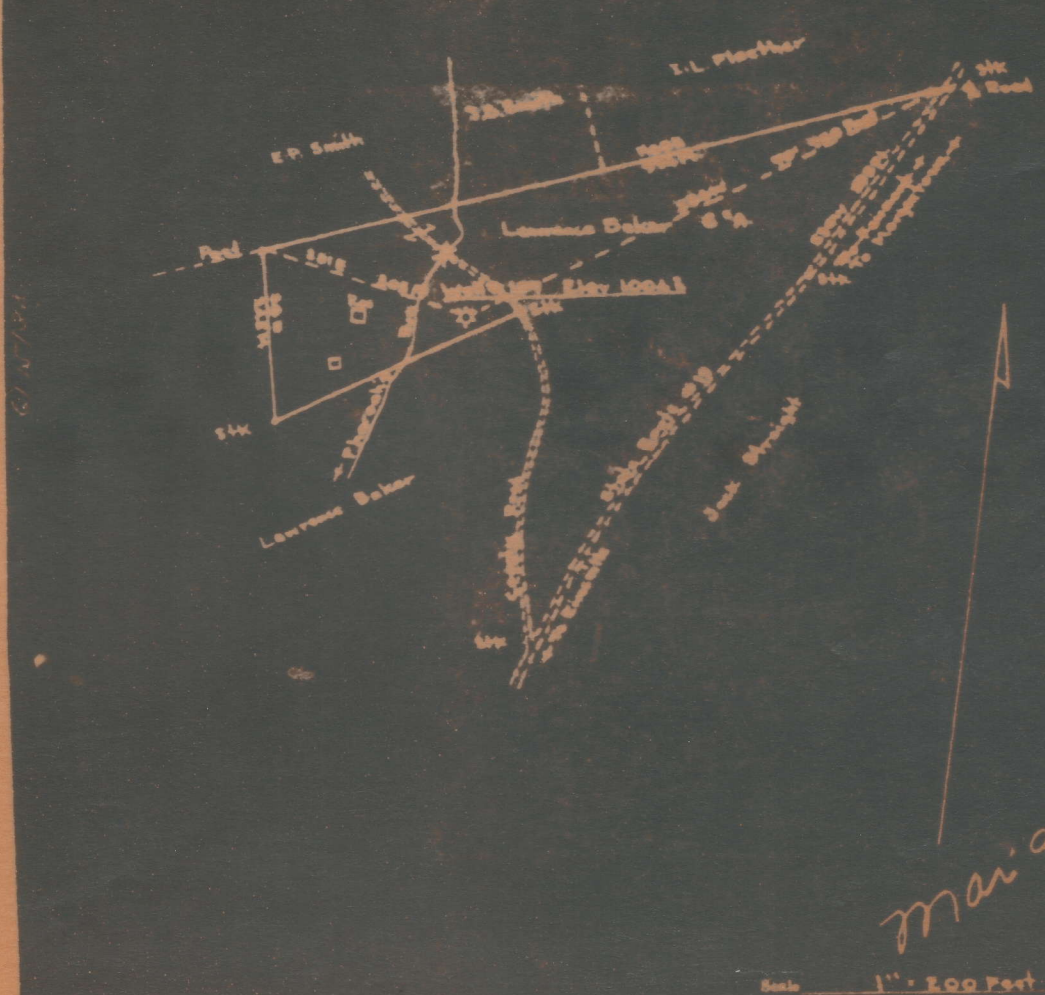
THE OWENS ILLINOIS GLASS COMPANY

GAS DEPARTMENT
CHARLESTON, W. VA.

PLAT OF PROPOSED LOCATION OF WELL No. 107

being Well No. 1 on Lawrence Baker Tract of 8 acres

located in Paul West State Marion County



ENGINEER'S CERTIFICATE

Paw Paw District, Marion County, W. Va.

By Owens-Illinois Glass Co., Gas Dept., P. O. Box 1375,
Charleston, W. Va.

On 6 acres, surface owned by Lawrence Baker, R. R. 2, Rivesville,
W. Va.

Well was completed May 29, 1927.

No elevation given.

16" conductor, 16'; 10" casing, 316'; 6-5/8", 1568'; 3" tubing, 2213'.

Heeter anchor packer, 6-5/8 x 3 x 16, set at 1892'.

3" tubing perforated at 2194-2199'.

Coal was encountered at 175-181 and 257-258'.

10" casing cemented in 16" hole through Mapletown and Pittsburgh

Coals, from 316' to 153', using 140 sacks of sand and 70 sacks
of cement.

Abandonment reported to Dept. of Mines June 12, 1934.

Well was shot at 2184-2205'.

Fresh water at 35' and 350'; salt water at 1302'.

Gas well.

?

MAR-93-A

	Top.	Bottom.	Thickness.
Clay	0	11	11
Lime	11	20	9
Slate	20	29	9
Lime (water at 35')	29	47	18
Slate	47	66	19
Lime	66	92	26
Slate	92	107	15
Lime	107	132	25
Slate	132	140	8
Sand	140	170	30
Slate	170	175	5
Mapletown (Sewickley) Coal	175	181	6
Lime	181	215	34
Slate	215	227	12
Lime	227	243	16
Slate	243	257	14
Pittsburgh Coal	257	258	1
Sand	258	270	12
Slate	270	280	10
Lime	280	300	20
Sand	300	310	10
Slate	310	340	30
Sand (water, 350')	340	355	15
Slate and shells	355	465	110
Lime	465	487	22
Red rock	487	511	24
Lime shells	511	563	52
Slate and shells	563	635	92
Lime	635	673	18
Slate and lime shells	673	903	230
Sand	903	947	44
Slate	947	1020	73
Sand	1020	1085	65
Slate	1085	1120	35
Sand	1120	1133	13
Slate	1133	1146	13
Sand	1146	1238	92

(OVER)

LAWRENCE BAKER ET AL. NO. 107 WELL (Continued).

	Top.	Bottom.	Thickness.
Slate	1238	- 1253	15
Sand (water, 1302-1304')	1253	- 1310	57
Slate	1310	- 1319	9
Sand	1319	- 1380	61
Slate	1380	- 1421	41
Red rock and lime	1421	- 1549	128
Little Lime	1549	- 1560	11
Pencil Cave	1560	- 1565	5
Big Lime	1565	- 1670	105
Big Injun Sand (show gas, 1720-1725'; show gas and oil, 1773-1778')	1670	- 1805	135
Slate and shells	1805	- 1877	72
Berea Sand	1877	- 1940	63
Slate and shells	1940	- 2105	165
Gantz Sand	2105	- 2150	45
Fifty-foot Sand (gas, 2195-2197')	2150	- 2240	90
Thirty-foot shells	2240	- 2300	60
Slate and shells	2300	- 2400	100
Sand	2400	- 2420	20
Red rock	2420	- 2483	63
Slate and shells	2483	- 2565	82
Sand	2565	- 2587	22
Slate	2587	- 2620	33
Fourth Sand	2620	- 2645	25
Slate	2645	- 2690	45
Fifth Sand	2690	- 2738	48
Slate	2738	- 2835	97
Total depth drilled		2835	
Well was plugged back as follows:			
- Total depth drilled		2835	
Stones	2835	- 2808	
3' wood plug	2808	- 2805	
Stones	2805	- 2640	
3' wood plug	2640	- 2637	
Open hole	2637	- 2338	
Bridged, stones and cement	2338	- 2213	
Present total depth		2213	