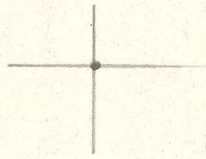


LATITUDE 39 30



1.29 S
1.33 W

LONGITUDE 80 22 30

7'5 OGIS topo location

7.5' loc _____ 15' loc _____
(calc.) _____

Company _____

Farm B F HELORETH I

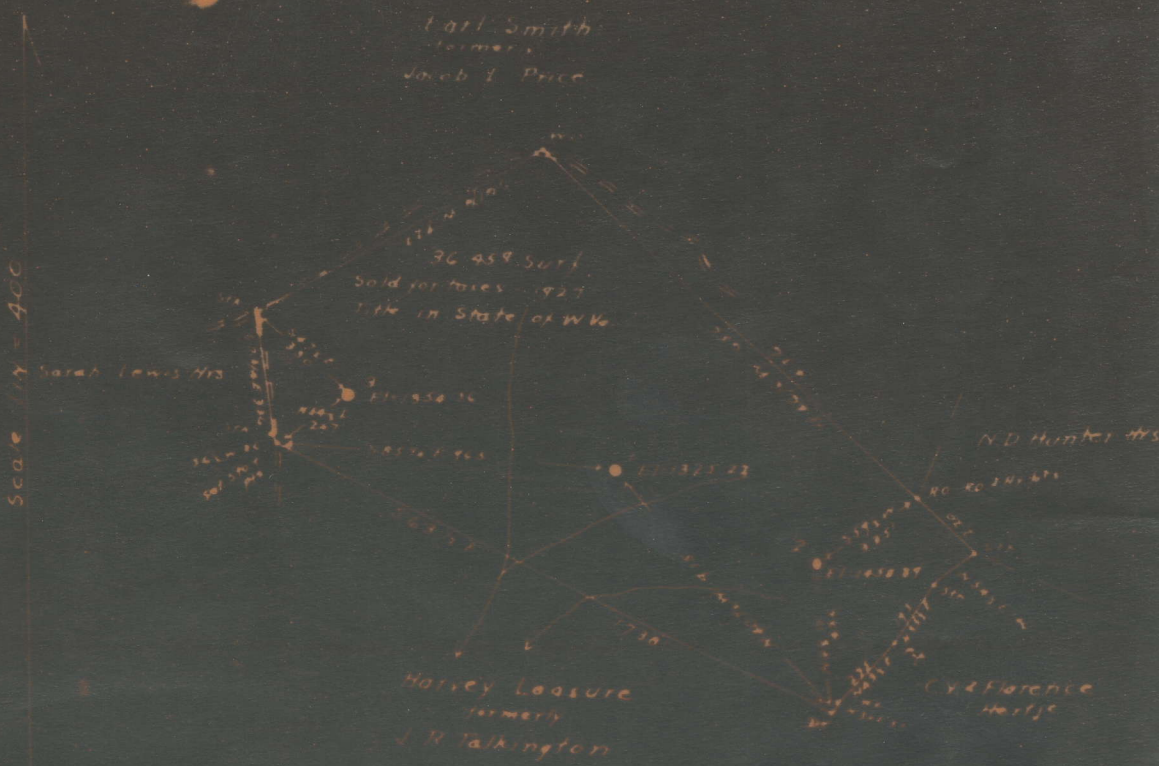
Quad WALLACE

County MARION

District MANNINGTON

WELL LOCATION MAP

File No. 30110



Scale 1/4" = 400'

Coal part of 110 429 assessed to Phillip Seiler et al
and Stein Bros Inc et al Uniontown, Pa

South Penn Oil Co
Survey for abandonment of Wells No. 1-2 & 3
B.F. Haldreth, Head of Quaker Fork of Binghamon Creek
Mannington Dist. Marion Co W Va - 4-19-35

M 110

Mannington District, Marion County, W. Va.
 By South Penn Oil Co., Chamber of Commerce Bldg., Pittsburgh, Pa.
 On 40 acres, surface owned by State of West Virginia, Charleston,
 W. Va., and mineral rights by B. F. Heldreth Heirs et al.,
 H. A. Harbert, Lumberport, W. Va.

Elevation, 1325.22' L.

16' conductor; 10" casing, 312' (pulled); 8 1/2", 1647' (pulled);
 6-5/8", 2487'; 5-3/16", 2652'.

Coal was encountered at 1215-1220'.

Liner: 150' of 4 1/2 x 4".

Abandonment reported to Dept. of Mines May 3, 1935.

Well was shot in Stray Sand, Oct. 26, 1910, with 40 qts.; and
 Jan. 15, 1919, with 20 qts.

Oil well.

MAR-110-A

	Top.	Bottom.
Pittsburgh Coal	1215	- 1220
Dunkard Sand	1720	- 1800
Salt Sand	2115	- 2215
Big Lime	2435	- 2518
Big Injun Sand	2518	- 2620
Fifty-foot Sand	3100	- 3115
Stray Sand (oil, 3275')	3230	- 3296
Slate	3296	- 3306
Gordon Sand	3306	- 3338
Slate, to bottom	3338	- 3340