

LATITUDE 39 35



.17W
1.35S

LONGITUDE 80 27 30

7'5 OGIS topo location

7.5' loc _____ 15' loc _____
(calc.) _____

Company _____

Farm J.A. HAWKINBERRY 2

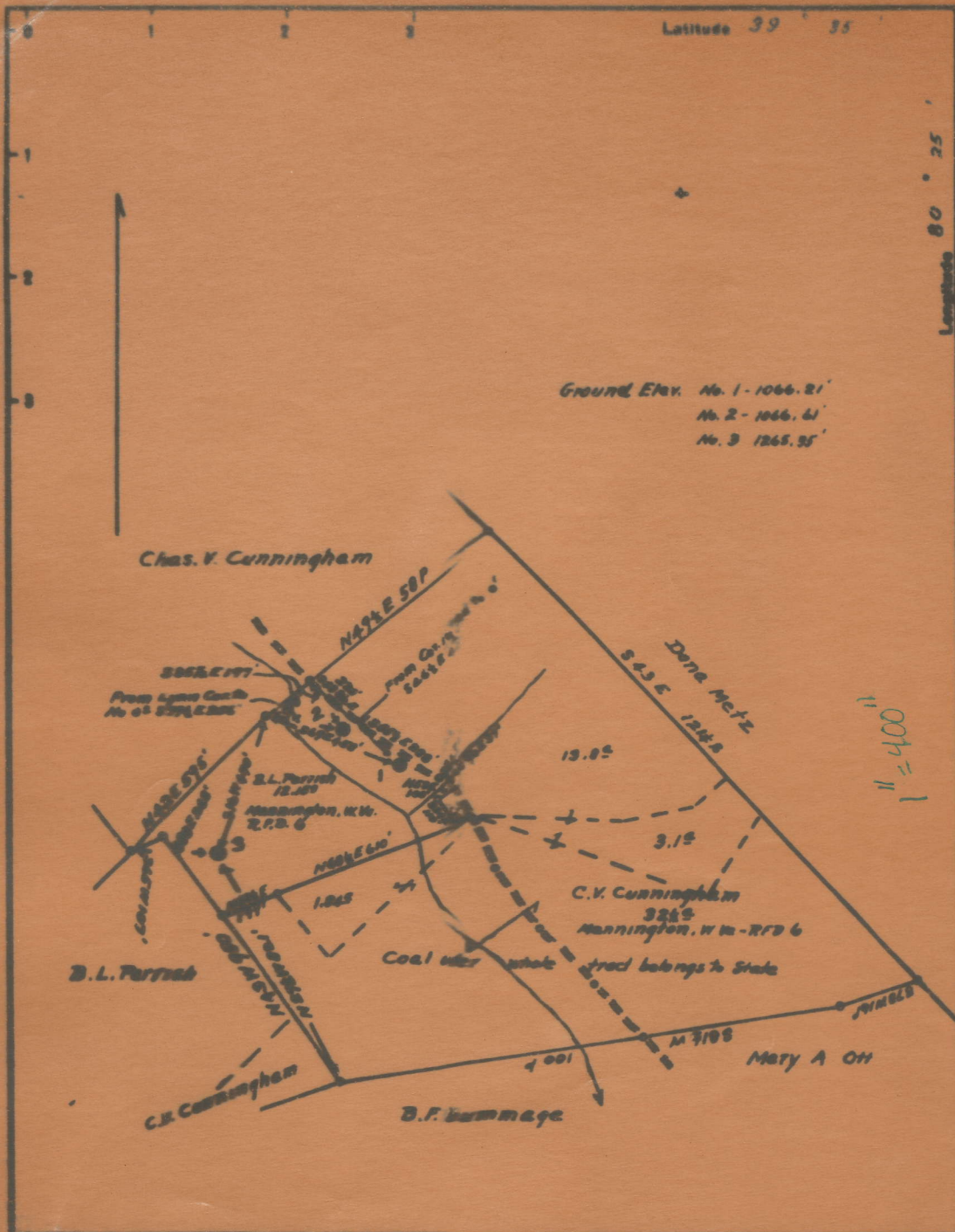
Quad GLOVER GAP

County MARION

District MANNINGTON

WELL LOCATION MAP

File No. 30136



Ground Elev. No. 1 - 1066.21'
 No. 2 - 1066.61'
 No. 3 - 1265.35'

Company South Penn Oil Co
 No. 64-36-A-1-Pittsburgh, Pa.
 Farm L.A. Hawthornberry
 Date June 25 1925 No. 48812

STATE OF WEST VIRGINIA
 DEPARTMENT OF MINES
 OIL AND GAS DIVISION
 CHARLESTON

Mannington District, Marion County, W. Va.
 By South Penn Oil Co., Chamber of Commerce Bldg., Pittsburgh, Pa.
 On 65 acres, surface owned by B. L. Parrish, R. D. No. 6, Mannington,
 W. Va., and mineral rights by Turner L. Sturm (1/2), Mannington,
 W. Va., and George W. Bowers (1/2), Mannington, W. Va.

Elevation, 1066.61' L.

10" casing, 204': 8 1/2", 1423'; 6-5/8", 1880'; 5-3/16", 2125'.

Coal was encountered at 795-800 and 898-905'.

Abandonment reported to Dept. of Mines May 21, 1936.

Well was shot August 1, 1927, with 10 qts.

Salt water at 1678 and 1805'.

Oil well.

MAR-136-A

	Top.	Bottom.
Mapletown (Sewickley) Coal	795	800
Pittsburgh Coal	898	905
Little Dunkard Sand	1240	1250
Big Dunkard Sand	1380	1445
Gas Sand (water, 1678')	1660	1688
1st Salt Sand (water, 1805')	1773	1845
2nd Salt Sand	1857	1955
Maxton Sand (oil and water, 2060')	1995	2065
Little Lime	2083	2095
Pencil Cave	2095	2100
Big Lime	2100	2181
Big Injun Sand (oil and water, 2249')	2181	
Total depth		2260