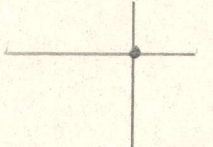


LATITUDE 39 35

LONGITUDE 80 27 30



1.41s
0.25w

7'5 OGIS topo location

7.5' loc _____ 15' loc _____
(calc.) _____

Company _____

Farm JA HAWKINBERG 3

Quad GLOVER GAP

County MARION

District MANNINGTON

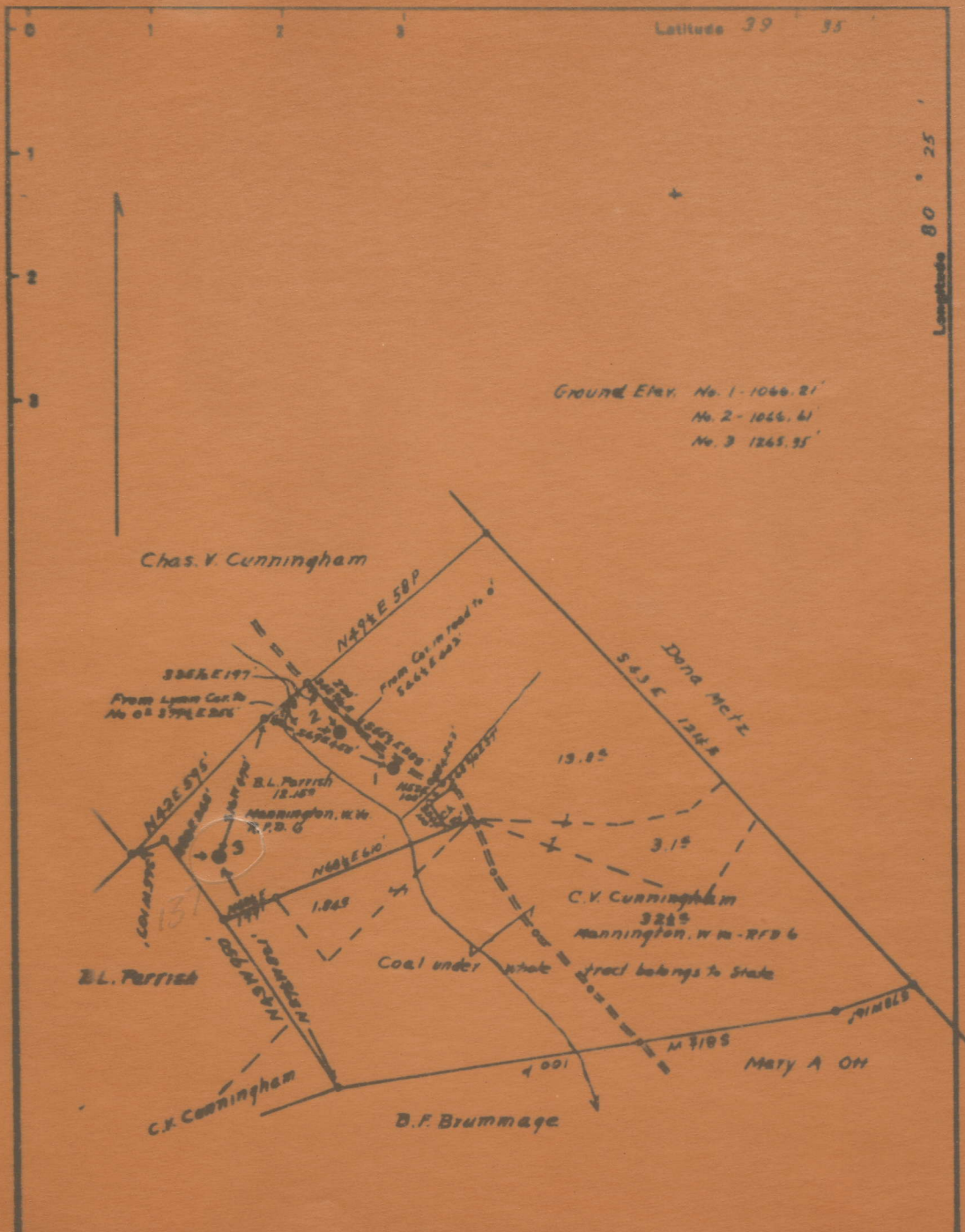
WELL LOCATION MAP

File No. 30137

Latitude 39 35

Longitude 80 25

Ground Elev. No. 1 - 1066.21'
No. 2 - 1056.61'
No. 3 - 1265.95'



Owner South Penn Oil Co
 Ad. 64-26 Ave - Pittsburgh, Pa.
 Form J.A. Montanberry
 Tract Area 65 Lease No 48812

STATE OF WEST VIRGINIA
 DEPARTMENT OF MINES
 OIL AND GAS DIVISION
 CHARLESTON
WELL LOCATION MAP

Mannington District, Marion County, W. Va.
 By South Penn Oil Co., Chamber of Commerce Bldg., Pittsburgh, Pa.
 On 65 acres, surface owned by B. L. Parrish, R. D. 6, Mannington,
 W. Va., and mineral rights by Turner L. Sturm (1/2), Mannington,
 W. Va., and George W. Bowers (1/2), Mannington, W. Va.
 Elevation, 1265.35' L.
 10" casing, 203' (pulled); 8 1/4", 1587'; 6-5/8", 2204'.
 Coal was encountered at 1007-1012 and 1100-1108'.
 Abandonment reported to Dept. of Mines May 21, 1936.
 Well was shot in Big Injun Sand, Dec. 21, 1920, with 30 qts.
 Salt water at 2004 and 2445'.
 Oil well.

MAR-137-A

	Top.	Bottom.
Mapletown (Sewickley) Coal	1007	- 1012
Pittsburgh Coal	1100	- 1108
Little Dunkard Sand	1490	- 1510
Big Dunkard Sand	1580	- 1615
1st Salt Sand (water, 2004')	1984	- 2023
2nd Salt Sand	2055	- 2132
Maxton Sand (gas, 2217-2222'; oil show, 2230')	2210	- 2286
Little Lime	2289	- 2298
Big Lime	2300	- 2382
Big Injun Sand (oil and water, 2445- 2451')	2382	
Total depth		2462