

LATITUDE 39 37 30

LONGITUDE 80 22 30



2.38S
2.16W

7'5 OGIS topo location

7.5' loc _____ 15' loc _____
(calc.) _____

Company _____ 370 _____

Farm JLHAYS 3

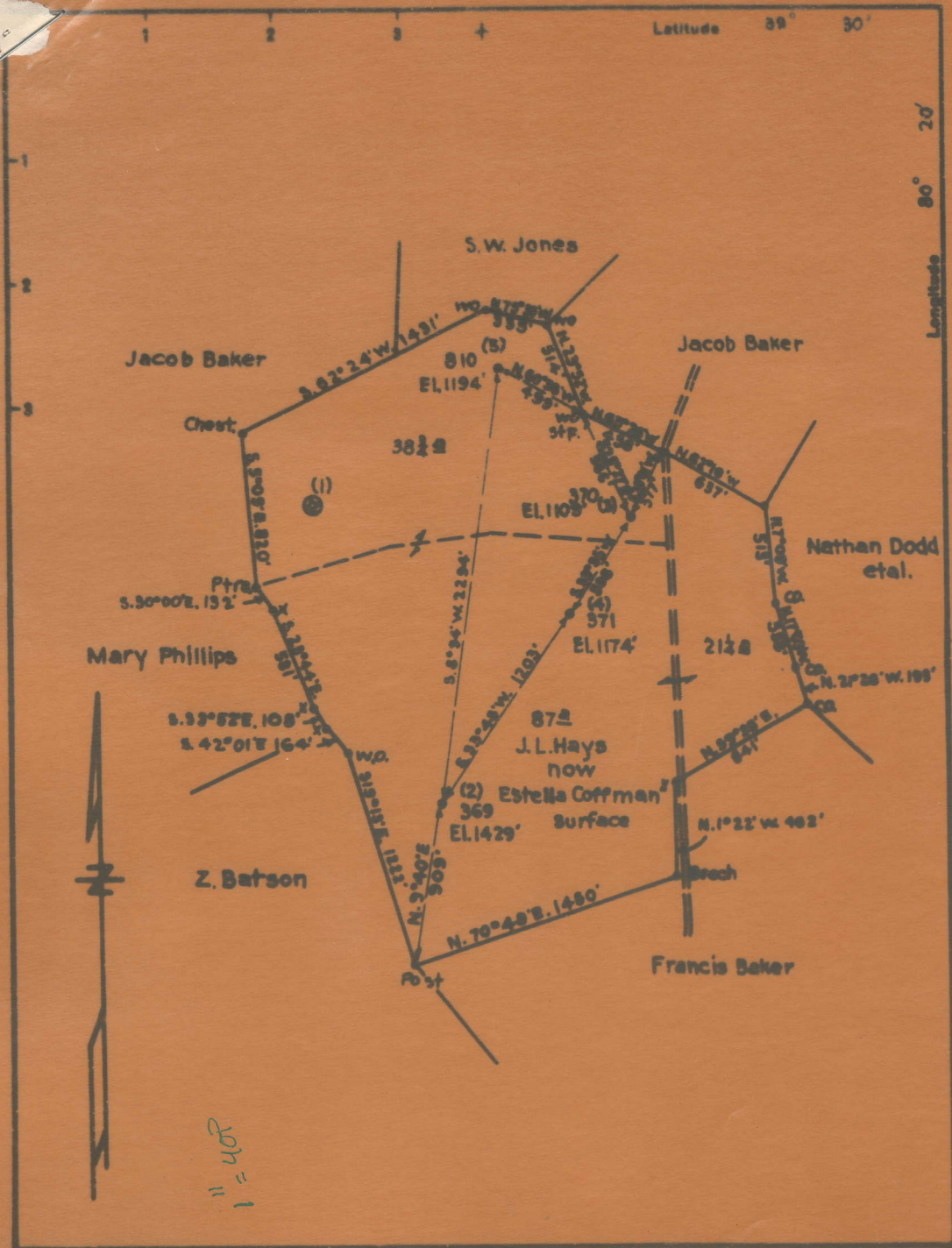
Quad GLOVER GAP

County MARION

District MANNINGTON

WELL LOCATION MAP

File No. 30141



Company Hops Construction & Refining Co.
 Address Clarksburg, W. Va.
 Farm J. L. Hays

STATE OF WEST VIRGINIA
 DEPARTMENT OF MINES
 OIL AND GAS DIVISION
 CHARLESTON

Mannington District, Marion County, W. Va.
 By Hope Construction & Refining Co., 445 W. Main St., Clarksburg, W. Va.
 On 175½ acres, surface owned by Mollie Hornor, Waynesburg, Pa., and
 mineral rights by Consolidation Coal Co., Fairmont, W. Va.
 Elevation, 1109' L.
 10" casing, 230'; 8½", 1354'; 6-5/8", 2143'; 5-3/16", 2563'.
 Coal was encountered at 774-778 and 872-878'.
 Abandonment reported to Dept. of Mines August 18, 1936.
 Well was shot at 2908-2918'.
 Fresh water at 60'; salt water at 1818 and 2192'.
 Producing hole.

MAR-141-A
 &
 200-A

	Top.	Bottom.	Thickness.
Native coal (Sewickley)	774	- 778	4
Pittsburgh Coal	872	- 878	6
Little Dunkard Sand	1255	- 1300	45
Big Dunkard Sand	1330	- 1390	60
Gas Sand	1400	- 1440	40
First Salt Sand	1625	- 1665	40
Second Salt Sand (salt water, 1818')	1700	- 1910	210
Maxton Sand	2022	- 2058	36
Little Lime	2065	- 2078	13
Pencil Cave	2078	- 2090	12
Big Lime	2090	- 2170	80
Big Injun Sand (water, 2192'; gas, 2188-2191' and 2265-2268')	2170	- 2345	175
Sand	2682	- 2740	58
Gantz Sand	2820	- 2840	20
Fifty-foot Sand	2846	- 2873	27
Thirty-foot Sand (oil, 2910'; gas, 2910-2915')	2902		
Total depth			2933