

Latitude

+

.68s
1.09w

Longitude

Topo Location

7.5' Loc. _____ 15' Loc. _____
_____ (calc.) _____

Company _____

Farm _____

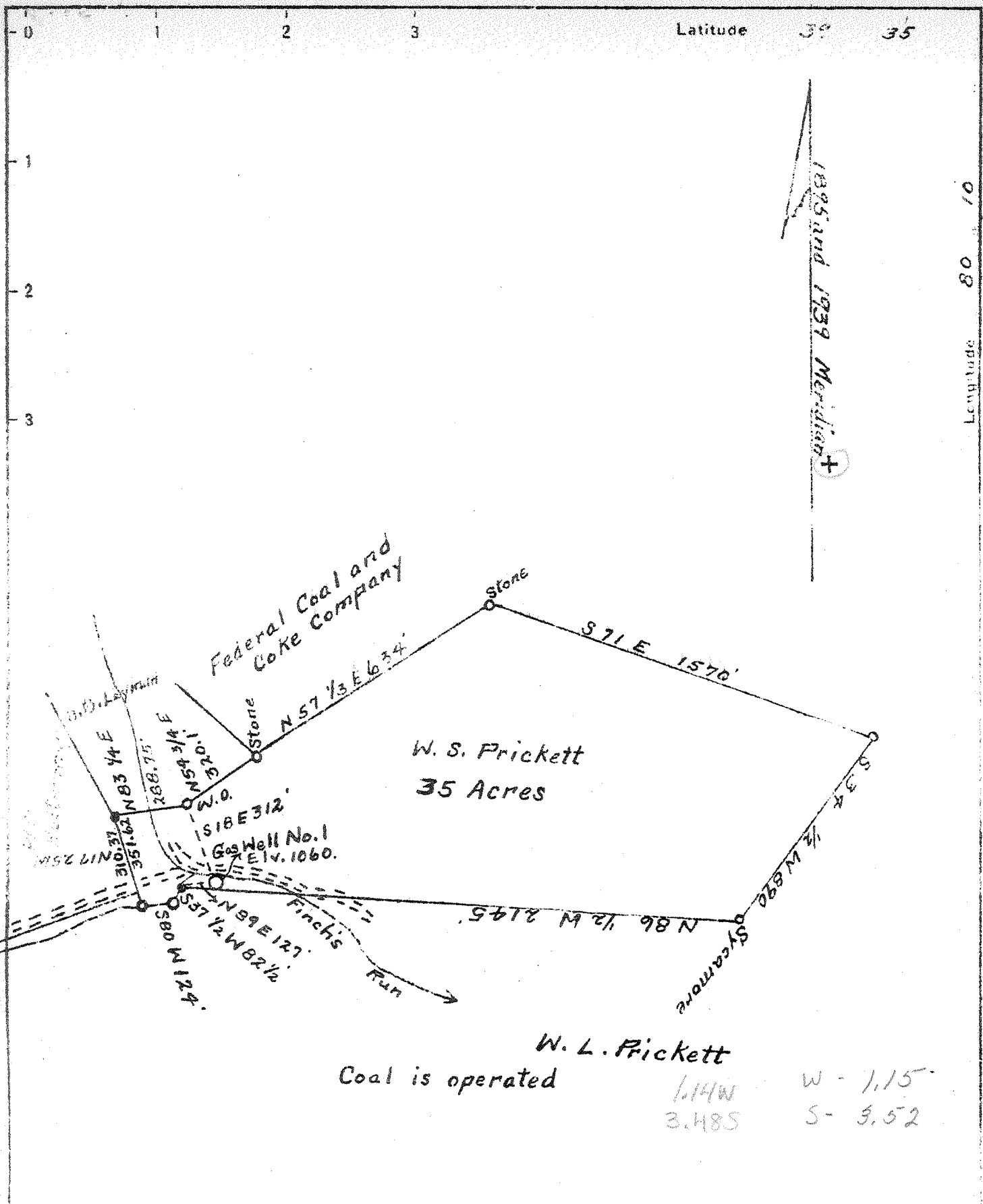
15' Quad _____
(sec.)

7.5' Quad Grant Town

District Farmington

WELL LOCATION PLAT

County 049 Permit 30247



W. L. Prickett
 Coal is operated
 1.14W W - 1.15
 3.48S S - 3.52

New Location
 Drill Deeper
 Abandonment

Company William Moses
 Address Salem, West Virginia
 Farm W. S. Prickett
 Tract Acres 35 Lease No. _____
 Well (Farm) No. 1 Serial No. _____
 Elevation (Spirit Level) 1060
 Quadrangle Blacksville S.W.
 County Marion District Fairmont
 Engineer C.C. Fittro, C.E.
 Engineer's Registration No. 818
 File No. XYZ Drawing No. 147
 Date Nov. 20, 1939 Scale 500 Ft. = 1 inch

STATE OF WEST VIRGINIA
 DEPARTMENT OF MINES
 OIL AND GAS DIVISION
 CHARLESTON

WELL LOCATION MAP
 FILE NO. MAR-247A

+ Denotes location of well on United States Topographic Maps, scale 1 to 62,500, latitude and longitude lines being represented by border lines as shown.

-- Denotes one inch spaces on border line of original tracing.