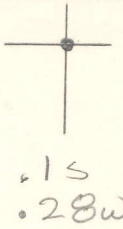


LATITUDE 39 37 30



LONGITUDE 80 25

7'5 OGIS topo location

7.5' loc _____ 15' loc _____
 _____ (calc.) _____

Company _____ 617

Farm Wm SNYDER

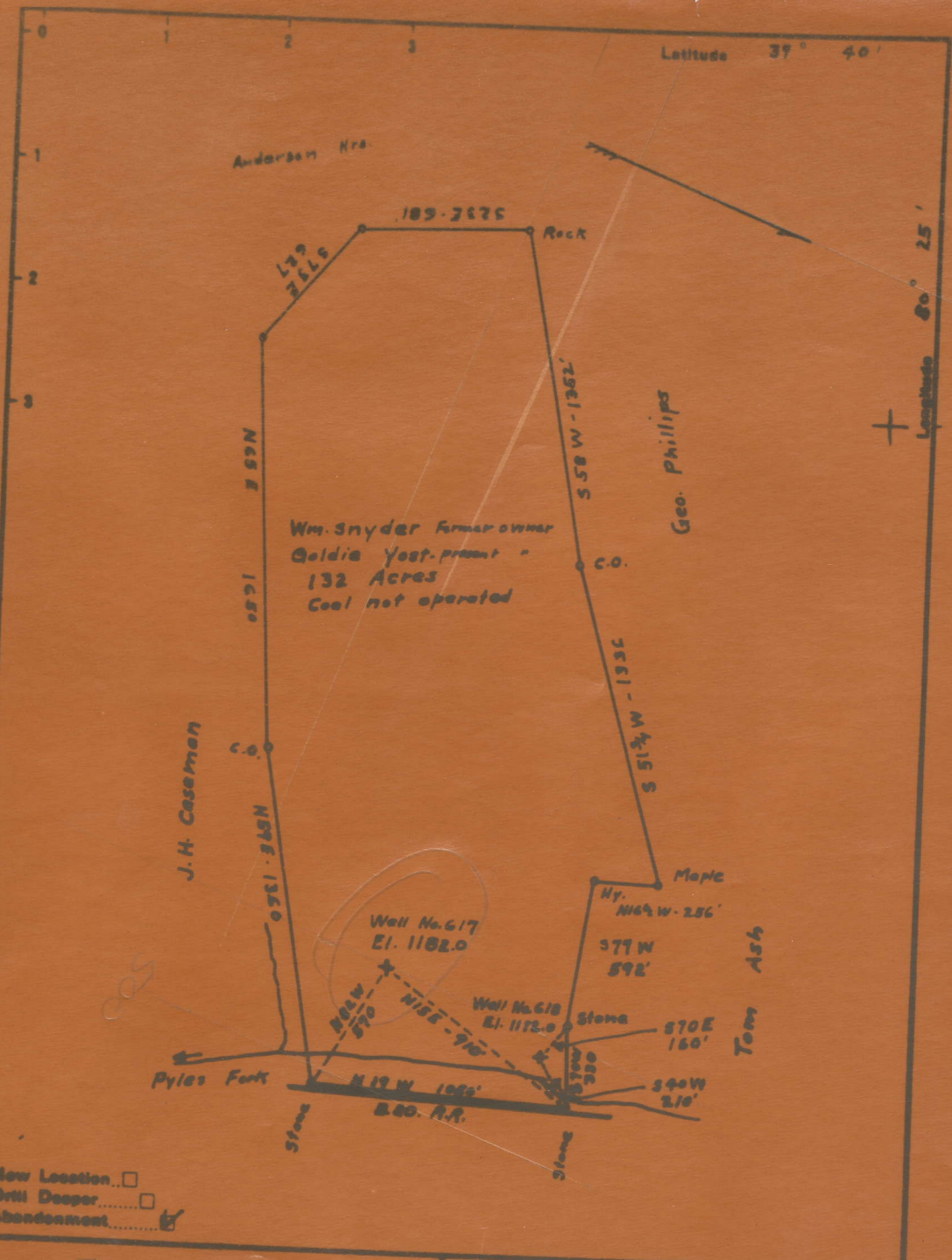
Quad GLOVER GAP

County MARION

District MANNINGTON

WELL LOCATION MAP

File No. 30305



New Location
 Drill Deeper
 Abandonment

Company The Interstate Gas & Supply Co.
 Address Box 611 Marietta Ohio
 Farm Wm. Snyder
 Tract Acres 132 Lease No.
Co. No. 2172212

STATE OF WEST VIRGINIA
 DEPARTMENT OF MINES
 OIL AND GAS DIVISION
 CHARLESTON