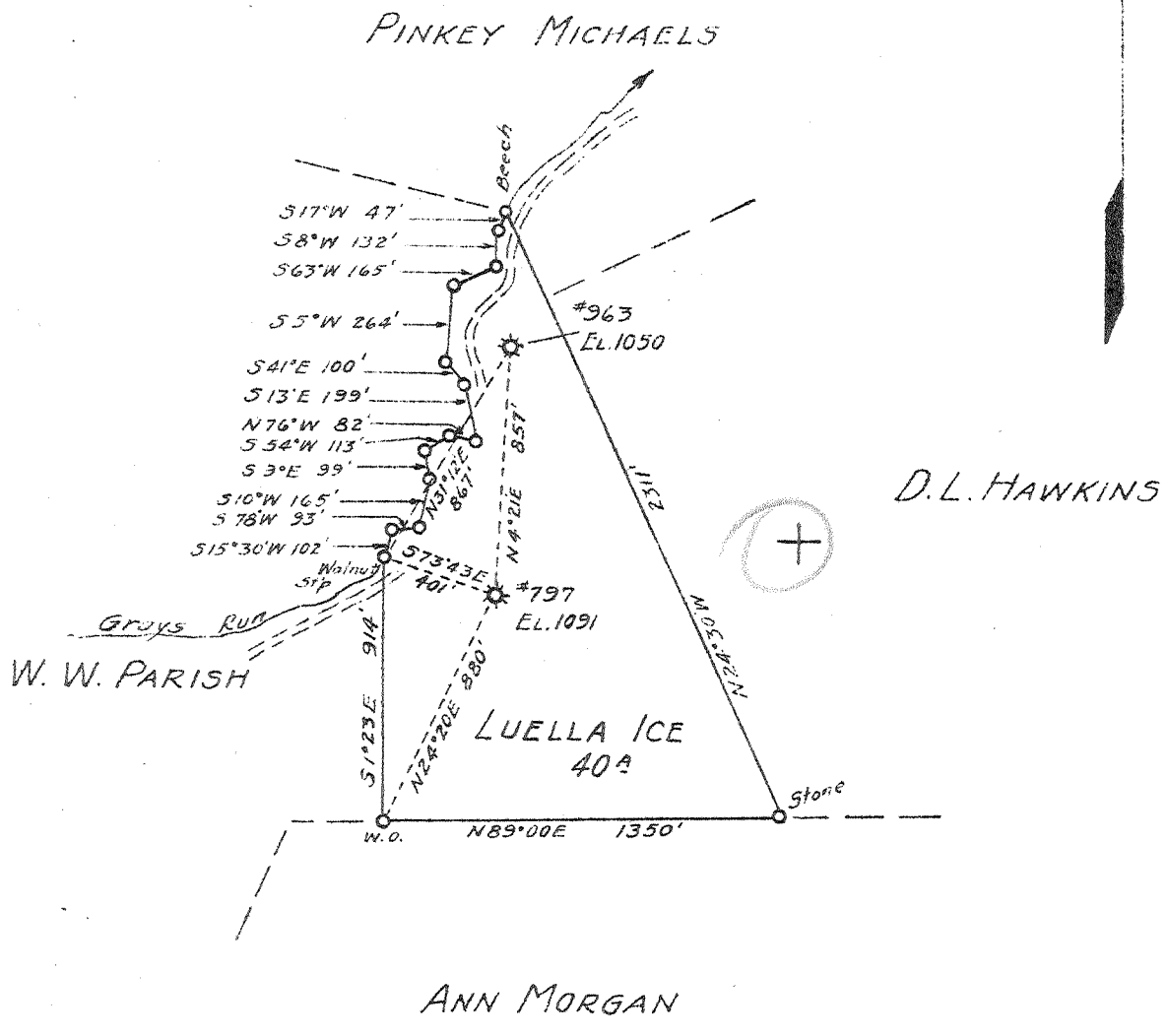


Latitude 39 35'

Longitude 80 15'



3.0W
5.25
JUL 18 1944
3.05 W
5.3 Q

New Location
Drill Deeper
Abandonment x 797

Map 5h. 30 Sq. N4E17 FB. 591 P.32

Company Hope Natural Gas Co.
 Address Clarksburg, W. Va.
 Farm Luella Ice
 Tract _____ Acres 40 Lease No. 5050
 Well (Farm) No. 797 Serial No. As Shown
 Elevation (Spirit Level) As Shown 1091
 Quadrangle Mannington
 County Marion District Lincoln
 Engineer W. W. Bowers
 Engineer's Registration No. 900
 File No. _____ Drawing No. _____
 Date 6-27-44 Scale 1" = 660'

STATE OF WEST VIRGINIA
DEPARTMENT OF MINES
OIL AND GAS DIVISION
CHARLESTON

WELL LOCATION MAP
FILE NO. MAR-401-A

+ Denotes location of well on United States Topographic Maps, scale 1 to 62,500, latitude and longitude lines being represented by border lines as shown.
 - Denotes one inch spaces on border line of original tracing



475

STATE OF WEST VIRGINIA
DEPARTMENT OF MINES
OIL AND GAS DIVISION

WELL RECORD

Permit No. YOK-AD

Oil or Gas Well Gas
(KIND)

Company Hope Natural Gas Company
Address 445 W. Main St. Clarksburg, W. Va.
Farm Luella Ice Acres 40
Location (waters) _____
Well No. 797 Elev. 1091
District Lincoln County Marion
The surface of tract is owned in fee by _____
Address _____
Mineral rights are owned by _____
Address _____
Drilling commenced Dec. 20, 1905
Drilling completed Feb. 2, 1906
Date Shot 1-17-44 From 2843 To 2855
With 40 qts. glycerine

| Casing and Tubing | Used in Drilling | Left in Well | Packers |
|-------------------|------------------|--------------|----------------|
| Size | | | Kind of Packer |
| 16 | | | |
| 13 | 60 | 0 | |
| 10 | 516 | 0 | Size of |
| 8 3/4 | 1755 1745 | 0 | |
| 6 5/8 | 2006 | 2006 | Depth set |
| 5 3/16 | 2637 | 2637 | |
| 3 | | | Perf. top |
| 2 | | | Perf. bottom |
| Liners Used | | | Perf. top |
| | | | Perf. bottom |

Open Flow /10ths Water in _____ Inch
/10ths Merc. in _____ Inch
Volume _____ Cu. Ft.
Rock Pressure _____ lbs. _____ hrs.
Oil _____ bbls., 1st 24 hrs.
Fresh water 60 feet _____ feet
Salt water 1385 feet _____ feet

CASING CEMENTED _____ SIZE _____ No. Ft. _____ Date _____
No cementing reported
COAL WAS ENCOUNTERED AT 155 FEET ? INCHES
315 FEET ? INCHES 435 FEET 120 INCHES
_____ FEET _____ INCHES _____ FEET _____ INCHES

| Formation | Color | Hard or Soft | Top | Bottom | Oil, Gas or Water | Depth Found | Remarks |
|----------------|-------|--------------|------|--------|-------------------|-------------|---------|
| Little Coal | | | 155 | | Fresh water | 60 | |
| Mapletown Coal | | | 315 | | | | |
| Pgh. Coal | | | 435 | 445 | | | |
| Little Dunkard | | | 860 | 870 | | | |
| Big Dunkard | | | 920 | 1015 | | | |
| Gas Sand | | | 1170 | 1230 | | | |
| Salt Sand | | | 1375 | 1490 | Water | 1385 | |
| Red Rock | | | 1615 | 1700 | | | |
| Little Lime | | | 1700 | 1715 | | | |
| Big Lime | | | 1725 | 1800 | | | |
| Injun | | | 1800 | 1950 | Gas | 1808 | Show |
| Fifty Foot | | | 2371 | 2438 | | | |
| Stray | | | 2623 | 2658 | | | |
| Gordon | | | 2684 | 2710 | | | |
| Fifth Sand | | | 2841 | 2861 | Gas | 2844-2852 | |
| Slate | | | 2861 | 2914 | | | |
| Total depth | | | | 2914 | | | |

TO BE ABANDONED

