

Latitude

Longitude

2.05s
.58w

Topo Location

7.5' Loc. _____ 15' Loc. _____
 _____ (calc.) _____

Company _____

Farm _____

15' Quad _____
(sec.)

7.5' Quad Claver Gap

District Mannington

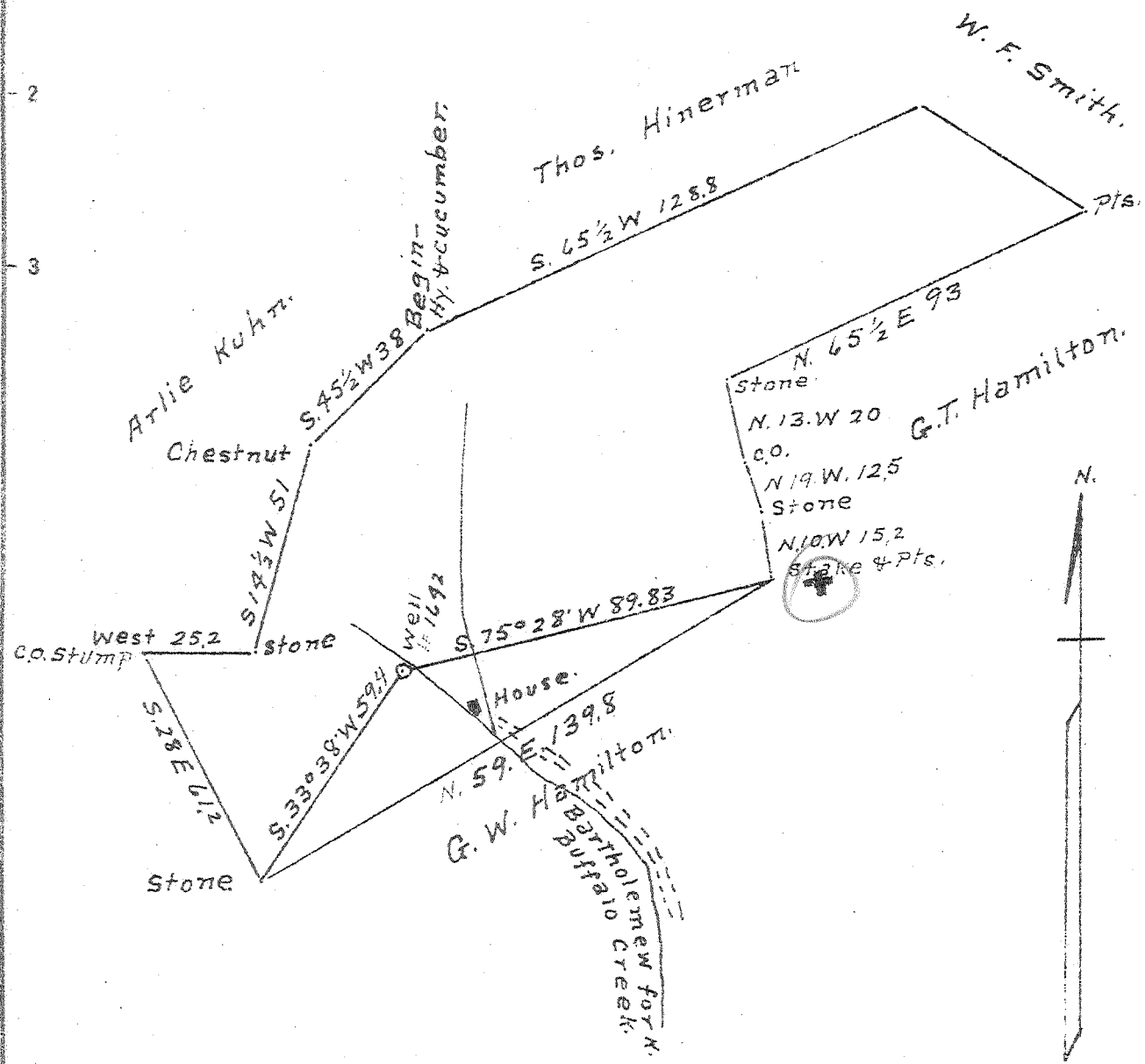
WELL LOCATION PLAT

County 049 Permit 30445

Latitude 79 40'

W.M.T. Co. Op # 360

Longitude 80 25'



New Location
 Drill Deeper
 Abandonment X

5.065
 2.72W
 JUL 22 1946
 2.75W
 5.17

Company Dunn-Mar Oil & Gas Co.
 Address Washington, Pa
 Farm Geo. W. Hamilton
 Tract one, Acres 96 1/2 Lease No. _____
 Well (Farm) No. _____ Serial No. 1642
 Elevation (Spirit Level) 1205'
 Quadrangle Mannington
 County Marion District Mannington
 Engineer A. L. Headley
 Engineer's Registration No. _____
 File No. _____ Drawing No. _____
 Date 6-29-1946 Scale 1 in = 40 poles

STATE OF WEST VIRGINIA
 DEPARTMENT OF MINES
 OIL AND GAS DIVISION
 CHARLESTON

WELL LOCATION MAP
 FILE NO. MAR-445-A

+ Denotes location of well on United States Topographic Maps, scale 1 to 62,500, latitude and longitude lines being represented by border lines as shown.
 - Denotes one inch spaces on border line of original tracing.



STATE OF WEST VIRGINIA
DEPARTMENT OF MINES
OIL AND GAS DIVISION

519

6064

WELL RECORD

Permit No. 4457A

Oil or Gas Well (KIND)

Company Dunn-Mar Oil and Gas Company
Address Washington, Pa.
Farm Geo. W. Hamilton Acres 98
Location (waters) _____
Well No. 1642 Elev. 1205
District Mannington County Marion
The surface of tract is owned in fee by _____
Address _____
Mineral rights are owned by _____
Address _____
Drilling commenced March 21, 1910
Drilling completed November 25, 1911
Date Shot _____ From _____ To _____
With _____

| Casing and Tubing | Used in Drilling | Left in Well | Packers |
|-------------------|------------------|--------------|----------------|
| Size | | | Kind of Packer |
| 16 | | | |
| 18 | | | |
| 10 | | | Size of |
| 8 1/4 | | | |
| 6 3/8 | | 2278' 8" | Depth set |
| 5 3/16 | | 3023' 4" | |
| 3 | | | Perf. top |
| 2 | | 3074' 7" | Perf. bottom |
| Liners Used | | | Perf. top |
| | | | Perf. bottom |

Open Flow _____ /10ths Water in _____ Inch
_____ /10ths Merc. in _____ Inch
Volume _____ Cu. Ft.
Rock Pressure _____ lbs _____ hrs.
Oil _____ bbls., 1st 24 hrs.
Fresh water _____ feet _____ feet
Salt water _____ feet _____ feet

CASING CEMENTED _____ SIZE _____ No. Ft. _____ Date _____
COAL WAS ENCOUNTERED AT _____ FEET _____ INCHES
_____ FEET _____ INCHES _____ FEET _____ INCHES
_____ FEET _____ INCHES _____ FEET _____ INCHES

| Formation | Color | Hard or Soft | Top | Bottom | Oil, Gas or Water | Depth Found | Remarks |
|------------|-------|--------------|------|--------|-------------------|-------------|---------|
| PITTSBURGH | COAL | | 965 | 973 | | | |
| Dunkard | Sand | | 1325 | 1525 | | | |
| Salt | Sand | | 1750 | 1995 | | | |
| Maxon | Sand | | 2075 | 2200 | | | |
| Injun | | | 2260 | 2440 | | | |
| Stray | | | 3010 | 3030 | | | |
| Gordon | Sand | | 3048 | 3088 | Gas at 3079' | | |
| Total | Depth | | | 3138 | | | |

| Formation | Color | Hard or Soft | Top | Bottom | Oil, Gas or Water | Depth Found | Remarks |
|-----------|-------|--------------|-----|--------|-------------------|-------------|---------|
| | | | | | | | |
| | | | | | | | |
| | | | | | | | |
| | | | | | | | |
| | | | | | | | |
| | | | | | | | |
| | | | | | | | |
| | | | | | | | |
| | | | | | | | |
| | | | | | | | |
| | | | | | | | |
| | | | | | | | |
| | | | | | | | |
| | | | | | | | |
| | | | | | | | |
| | | | | | | | |
| | | | | | | | |
| | | | | | | | |
| | | | | | | | |
| | | | | | | | |
| | | | | | | | |
| | | | | | | | |

Date _____, 194__

APPROVED _____, Owner

By _____

(Title)