

**Latitude**

**Longitude**

+  
1.83s  
.46w

**Topo Location**

7.5' Loc. \_\_\_\_\_ 15' Loc. \_\_\_\_\_  
\_\_\_\_\_ (calc.) \_\_\_\_\_

**Company** \_\_\_\_\_

**Farm** \_\_\_\_\_

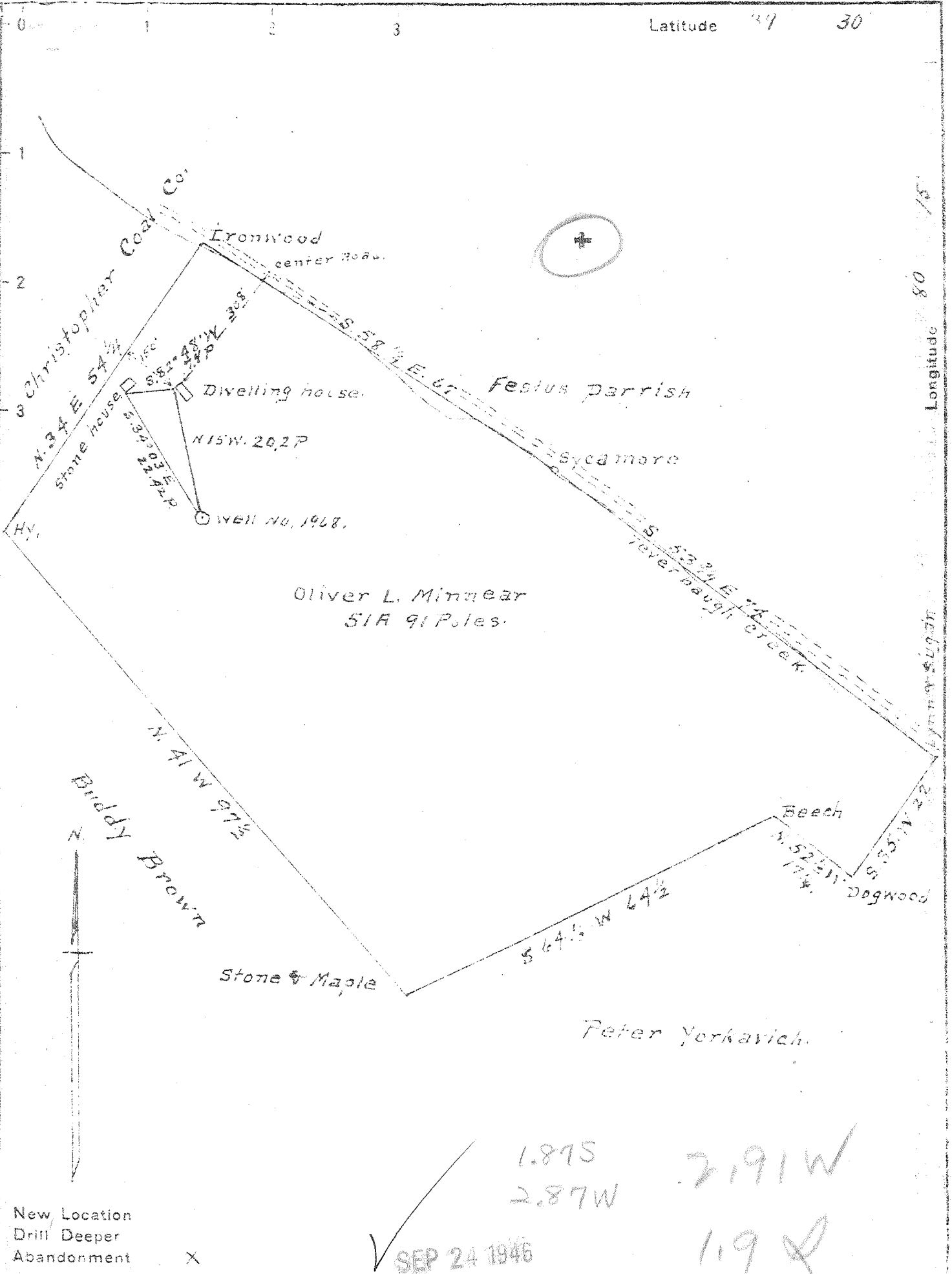
**15' Quad** \_\_\_\_\_  
(sec.)

**7.5' Quad** Shumston

**District** Lincoln

**WELL LOCATION PLAT**

**County** 049 **Permit** 30446



Oliver L. Minnear  
SIR 91 Poles

1.875  
2.87W  
2.91W  
1.19

New Location  
Drill Deeper  
Abandonment X

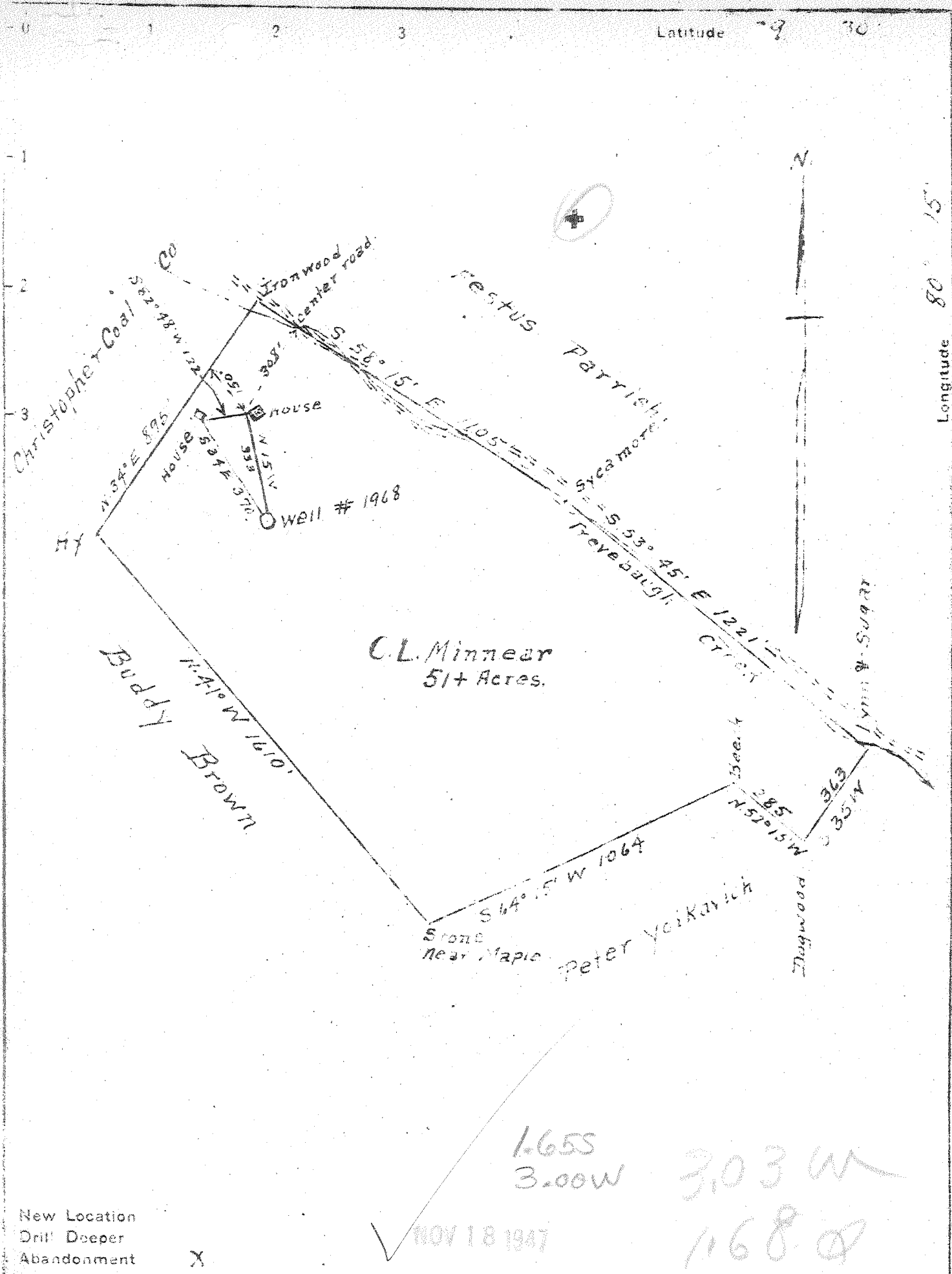
SEP 24 1946

Company Dunn Mar. Oil & Gas Co.  
 Address Washington Pa.  
 Farm Oliver L. Minnear  
 Tract ONE Acres 51.7 Lease No. \_\_\_\_\_  
 Well (Farm) No. ONE Serial No. 1968  
 Elevation Spirit Level 1199  
 Quadrangle Clarksburg  
 County Marton District Lincoln  
 Engineer A. L. Headley  
 Engineer's Registration No. \_\_\_\_\_  
 File No. \_\_\_\_\_ Drawing No. \_\_\_\_\_  
 Date 7-12-1946 Scale 1 inch = 20 ft

STATE OF WEST VIRGINIA  
DEPARTMENT OF MINES  
OIL AND GAS DIVISION  
CHARLESTON

WELL LOCATION MAP  
FILE NO. MAR-446-A

+ Denotes location of well on United States Topographic Maps, scale 1 to 62,500, latitude and longitude lines being represented by border lines as shown.  
 - Denotes one inch spaces on border line of original tracing.



New Location  
 Drill Deeper  
 Abandonment X

NOV 18 1947

1.655  
 3.00W  
 3.03W  
 1.680

Company Junn-Mar Oil & Gas Co.  
 Address Waynesburg, Pa.  
 Farm O.L. Minnear  
 Tract 1 Acres 51+ Lease No. \_\_\_\_\_  
 Well (Farm) No. 1 Serial No. 1968  
 Elevation (Spirit Level) 1099  
 Quadrangle Clarksburg  
 County Marion District Lincoln  
 Engineer A.L. Headley  
 Engineer's Registration No. \_\_\_\_\_  
 File No. \_\_\_\_\_ Drawing No. \_\_\_\_\_  
 Date 10-24-1947 Scale 1" = 400'

STATE OF WEST VIRGINIA  
 DEPARTMENT OF MINES  
 OIL AND GAS DIVISION,  
 CHARLESTON

WELL LOCATION MAP  
 FILE NO. MAR-491-A

+ Denotes location of well on United States Topographic Maps, scale 1 to 62,500, latitude and longitude lines being represented by border lines as shown.

- Denotes one inch spaces on border line of original tracing.



STATE OF WEST VIRGINIA  
DEPARTMENT OF MINES  
OIL AND GAS DIVISION

574

WELL RECORD

Permit No. 491-A

Oil or Gas Well \_\_\_\_\_  
(KIND)

Company Dunn Mar Oil & Gas Company  
Address Waynesburg, Pennsylvania  
Farm O. L. Minner Acres 51  
Location (waters) Trevebaugh Creek  
Well No. 1968 Elev. 1099  
District Lincoln County Marion  
The surface of tract is owned in fee by Consol. Coal Co.  
Address \_\_\_\_\_  
Mineral rights are owned by \_\_\_\_\_  
Address \_\_\_\_\_

Casing and Tubing	Used in Drilling	Left in Well	Packers
Size			Kind of Packer
16			
13			
10	402	402	Size of
8 1/4			
6 3/8	1419	1419	Depth set
5 3/16	2460	2460	
3			Perf. top
2			Perf. bottom
Liners Used			Perf. top
			Perf. bottom

Drilling commenced \_\_\_\_\_  
Drilling completed \_\_\_\_\_  
Date Shot \_\_\_\_\_ From \_\_\_\_\_ To \_\_\_\_\_  
With \_\_\_\_\_  
Open Flow \_\_\_\_\_ /10ths Water in \_\_\_\_\_ Inch  
\_\_\_\_\_ /10ths Merc. in \_\_\_\_\_ Inch  
Volume \_\_\_\_\_ Cu. Ft.  
Rock Pressure \_\_\_\_\_ lbs. \_\_\_\_\_ hrs.  
Oil \_\_\_\_\_ bbls., 1st 24 hrs.  
Fresh water \_\_\_\_\_ feet \_\_\_\_\_ feet  
Salt water \_\_\_\_\_ feet \_\_\_\_\_ feet

CASING CEMENTED 10" SIZE 390' No. Ft. \_\_\_\_\_ Date \_\_\_\_\_  
COAL WAS ENCOUNTERED AT \_\_\_\_\_ FEET \_\_\_\_\_ INCHES  
\_\_\_\_\_ FEET \_\_\_\_\_ INCHES FEET \_\_\_\_\_ INCHES  
\_\_\_\_\_ FEET \_\_\_\_\_ INCHES FEET \_\_\_\_\_ INCHES

Formation	Color	Hard or Soft	Top	Bottom	Oil, Gas or Water	Depth Found	Remarks
Native Coal			250	254			
Pittsburgh Coal			359	366			
Little Dunkard			740	770			
Big Dunkard			830	910			
Gas Sand			<del>1090</del> 1090	1130			
Salt Sand			1145	1410			
Big Injun			1757	1842			
Line			1642	1757			
Gordon Stray			2550	2578			
Gordon			2591	2615			
Fourth Sand			2625	2638			
Fifth Sand			2743	2774			
Total Depth				2825'			