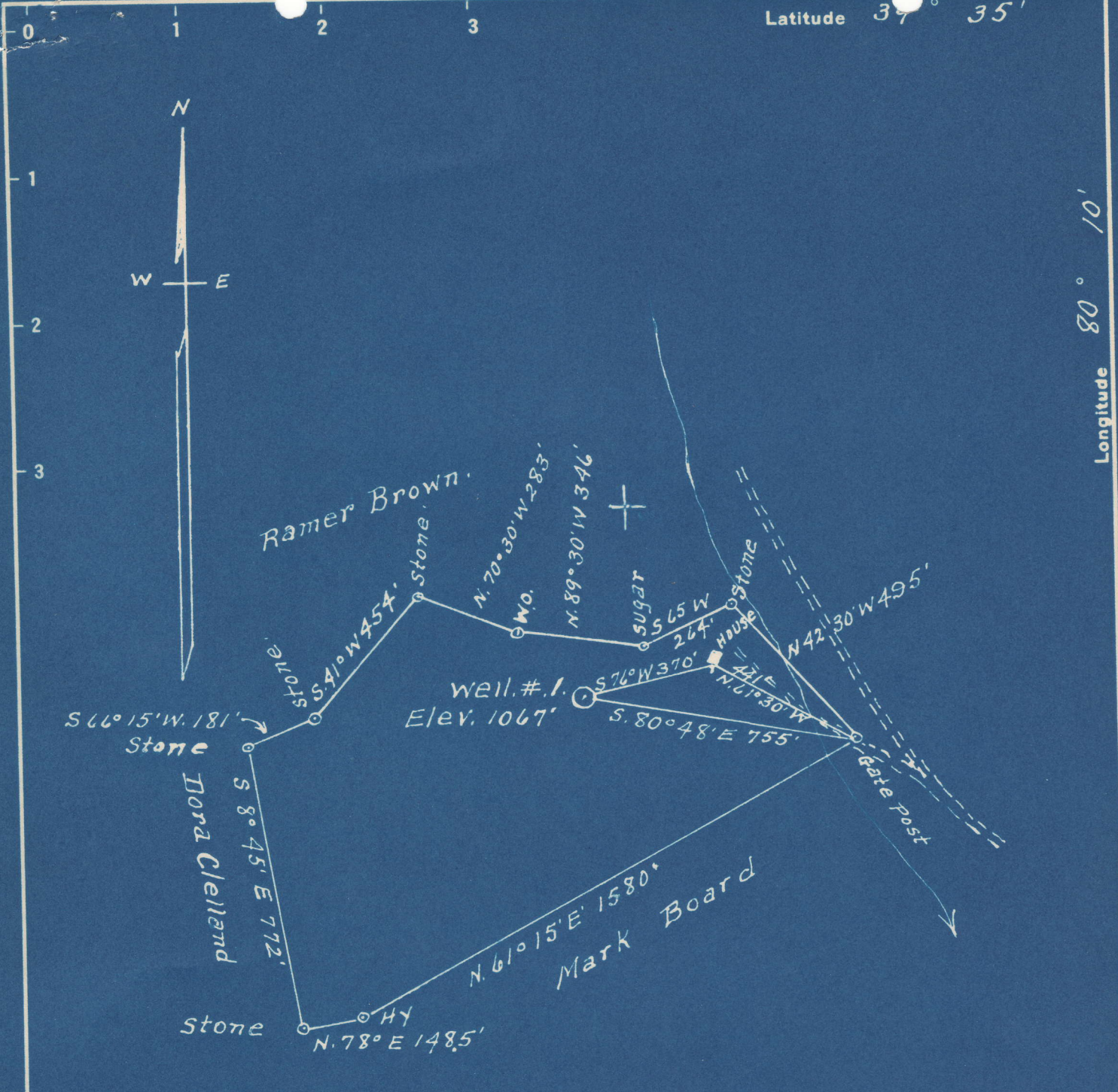


Latitude 37° 35'

Longitude 80° 10'



Surface: Orval Clelland, Farmington, W.Va.  
 Coal: Jamison Coal & Coke Co. Barrackville W.Va.

3.45S  
 3.35W  
 3.51 S  
 3.39 W

New Location   
 Drill Deeper   
 Abandonment

Company Harry C. Isabel  
 Address 309 Morgantown, St. Uniontown Pa  
 Farm Sadie Clelland  
 Tract 1 Acres 24 Lease No. 20708  
 Well (Farm) No. 1 Serial No. 2456  
 Elevation (Spirit Level) 1067'  
 Quadrangle Blacksville  
 County Marion District Lincoln  
 Engineer A. L. Headley  
 Engineer's Registration No. 2021  
 File No. \_\_\_\_\_ Drawing No. \_\_\_\_\_  
 Date 1-17-49 Scale 1" = 400'

STATE OF WEST VIRGINIA  
 DEPARTMENT OF MINES  
 OIL AND GAS DIVISION  
 CHARLESTON

WELL LOCATION MAP  
 FILE NO. MAR-604-A

+ Denotes location of well on United States Topographic Maps, scale 1 to 62,500, latitude and longitude lines being represented by border lines as shown.  
 - Denotes one inch spaces on border line of original tracing.



STATE OF WEST VIRGINIA  
DEPARTMENT OF MINES  
OIL AND GAS DIVISION

727

WELL RECORD

Permit No. 604-A Oil or Gas Well \_\_\_\_\_ (KIND)

Company <u>Harry C. Isabel</u>	Casing and Tubing	Used in Drilling	Left in Well	Packers
Address <u>Uniontown, Pa.</u>	Size			
Farm <u>Sadie Clelland</u> Acres <u>24</u>	16			See Below
Location (waters)	13			Kind of Packer
Well No. <u>1</u> Elev. <u>1067'</u>	10	<u>443'6"</u>	<u>443'6"</u>	Size of
District <u>Lincoln</u> County <u>Marion</u>	8 1/4	<u>1166</u>	<u>1166</u>	Depth set
The surface of tract is owned in fee by <u>Orval Clelland</u>	6 1/2	<u>1679</u>	<u>1666'1"</u>	Perf. top
Address <u>Farmington, W. Va.</u>	5 3/16	<u>2607'5"</u>	<u>2607'5"</u>	Perf. bottom
Mineral rights are owned by <u>Coal: Industrial Collieries Corp.</u>	3			Perf. top
Address <u>Barrackville, W. Va.</u>	2	<u>1746'5"</u>	<u>Pulled</u>	Perf. bottom
Drilling commenced <u>January 27, 1912</u>	2	<u>2813'6"</u>	<u>2813'6"</u>	Perf. top
Drilling completed <u>April 5, 1912</u>				Perf. bottom
Date Shot <u>SEE BELOW</u> From _____ To _____				
With _____				

Open Flow \_\_\_\_\_ /10ths Water in \_\_\_\_\_ Inch  
 \_\_\_\_\_ /10ths Merc. in \_\_\_\_\_ Inch  
 Volume \_\_\_\_\_ Cu. Ft.  
 Rock Pressure \_\_\_\_\_ lbs. \_\_\_\_\_ hrs.  
 Oil \_\_\_\_\_ bbls., 1st 24 hrs.  
 Fresh water \_\_\_\_\_ feet \_\_\_\_\_ feet  
 Salt water 1340-50 feet \_\_\_\_\_ feet

CASING CEMENTED \_\_\_\_\_ SIZE \_\_\_\_\_ No. Ft. \_\_\_\_\_ Date \_\_\_\_\_  
10" casing cemented 320' to 437'  
 COAL WAS ENCOUNTERED AT 370 FEET 108 INCHES  
 \_\_\_\_\_ FEET \_\_\_\_\_ INCHES FEET \_\_\_\_\_ INCHES  
 \_\_\_\_\_ FEET \_\_\_\_\_ INCHES FEET \_\_\_\_\_ INCHES

Formation	Color	Hard or Soft	Top	Bottom	Oil, Gas or Water	Depth Found	Remarks
Pittsburgh Coal			370	379	Water 45		
Dunkard Sand			875	900	Gas 1010		
Gas Sand			997	1135			
Salt Sand			1167	1408	Gas 1113	Water 1340-50	
Maxon Sand			1505	1520			
Injun Sand			1701		Gas 1707-34		
Berea Sand			1927	1950			
Gentz Sand			2220	2248	Gas 2228		
Fifty Foot Sand			2265	2352			
Thirty Foot Sand			2365	2384			
Stray Sand			2585	2622			
Gordon Sand			2632	2649	Gas 2644		
Fourth Sand			2669	2678			
Fifth Sand			2740	2765	Gas 2746		
TOTAL DEPTH			2794				

PACKERS			SHOOTING		
SIZE	MAKE	SET AT	DATE	QTS.	SAND
8 x 10	L. A.	997	12-16-24	15	5th
6 x 8	B. H.				
2 x 6	S. A.	1680			
5 x 2	A.	2669			

