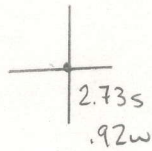


Latitude

Longitude



Topo Location

7.5' Loc. \_\_\_\_\_ 15' Loc. \_\_\_\_\_  
 \_\_\_\_\_ (calc.) \_\_\_\_\_

Company \_\_\_\_\_

Farm \_\_\_\_\_

15' Quad \_\_\_\_\_  
(sec.)

7.5' Quad Grant Town

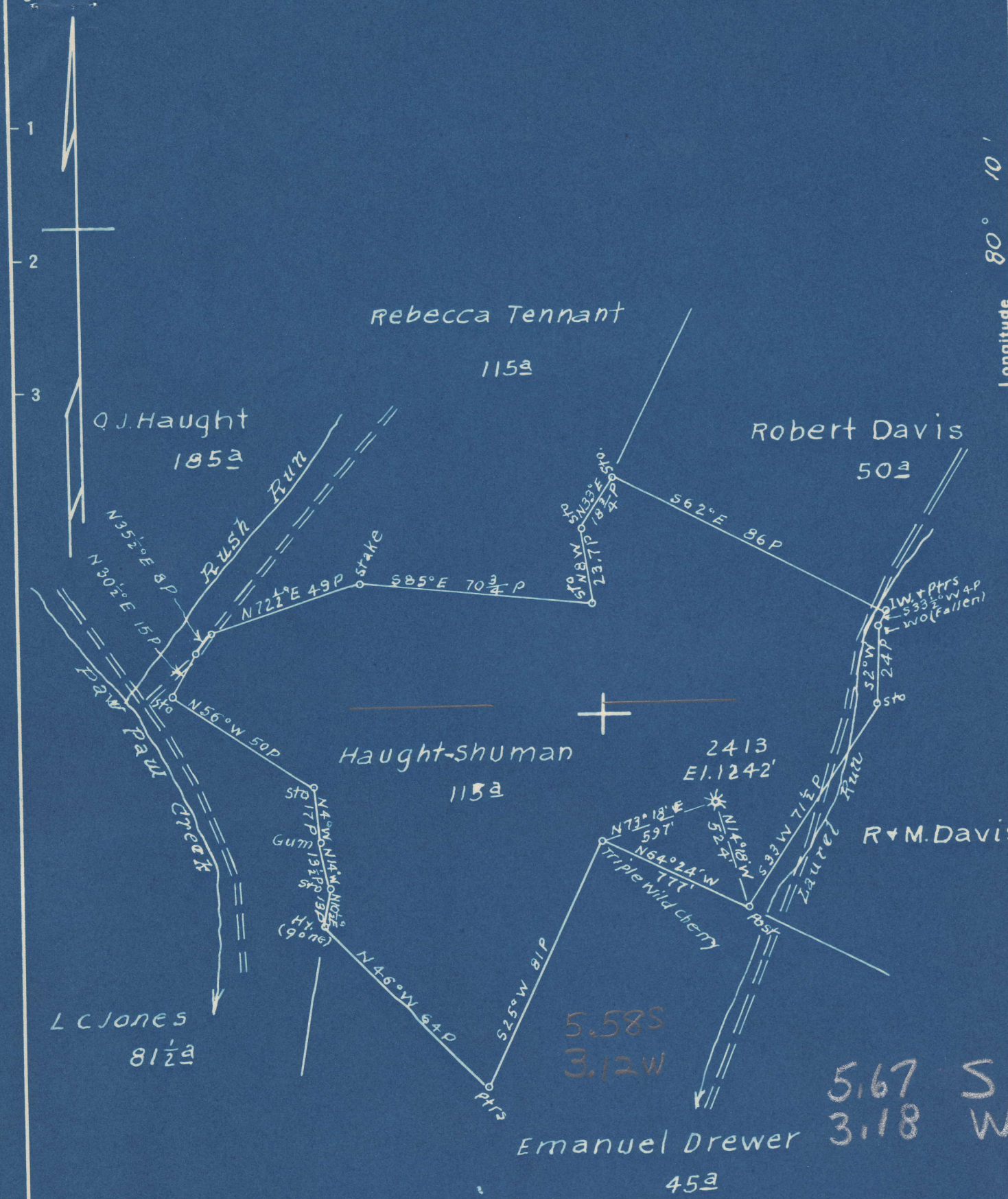
District Paw Paw

WELL LOCATION PLAT

County 049 Permit 30639

Latitude 39° 40'

Longitude 80° 10'



- New Location
- Drill Deeper
- Abandonment

Map Sh. 27 N 9 E 22 FB-932 P 32-33

Company Hope Natural Gas Co.  
 Address Clarksburg W.Va.  
 Farm Haught-shuman  
 Tract \_\_\_\_\_ Acres 115 Lease No. 20672  
 Well (Farm) No. \_\_\_\_\_ Serial No. 2413  
 Elevation (Spirit Level) 1242'  
 Quadrangle Blacksville  
 County Marion District PawPaw  
 Engineer Wm Bowers  
 Engineer's Registration No. 900  
 File No. \_\_\_\_\_ Drawing No. \_\_\_\_\_  
 Date 6-2-49 Scale 1" = 40P

STATE OF WEST VIRGINIA  
 DEPARTMENT OF MINES  
 OIL AND GAS DIVISION  
 CHARLESTON

**WELL LOCATION MAP**  
 FILE NO. MAR-639-A

+ Denotes location of well on United States Topographic Maps, scale 1 to 62,500, latitude and longitude lines being represented by border lines as shown.

- Denotes one inch spaces on border line of original tracing.



737

STATE OF WEST VIRGINIA  
DEPARTMENT OF MINES  
OIL AND GAS DIVISION

WELL RECORD

Permit No. 639-A

Oil or Gas Well XXX  
(KIND)

Company Hope Natural Gas Company.  
 Address 445 West Main St. Clarksburg, W.Va.  
 Farm Haught Shuman Acres 115  
 Location (waters) (?)  
 Well No. 2413 Elev. 1242  
 District Paw Paw County Marion  
 The surface of tract is owned in fee by \_\_\_\_\_  
 Address \_\_\_\_\_  
 Mineral rights are owned by \_\_\_\_\_  
 Address \_\_\_\_\_  
 Drilling commenced January 4, 1912  
 Drilling completed January 26, 1912  
 Date Shot \_\_\_\_\_ From \_\_\_\_\_ To \_\_\_\_\_  
 With \_\_\_\_\_  
 Open Flow \_\_\_\_\_ /10ths Water in \_\_\_\_\_ Inch  
 \_\_\_\_\_ /10ths Merc. in \_\_\_\_\_ Inch  
 Volume \_\_\_\_\_ Cu. Ft.  
 Rock Pressure \_\_\_\_\_ lbs. \_\_\_\_\_ hrs.  
 Oil \_\_\_\_\_ bbls., 1st 24 hrs.  
 Fresh water none recorded feet \_\_\_\_\_ feet  
 Salt water none recorded feet \_\_\_\_\_ feet

Casing and Tubing	Used in Drilling	Left in Well	Packers
Size			Kind of Packer
16			
13			
10	518	518	Size of
8 1/4	1009	1009	
6 5/8			Depth set
5 3/16			
3			Perf. top
2			Perf. bottom
Liners Used			Perf. top
			Perf. bottom

CASING CEMENTED 1912 SIZE 10" No. Ft. 518 Date \_\_\_\_\_  
 COAL WAS ENCOUNTERED AT 65 FEET 60 INCHES  
457 FEET 60 INCHES FEET INCHES  
 FEET INCHES FEET INCHES

Formation	Color	Hard or Soft	Top	Bottom	Oil, Gas or Water	Depth Found	Remarks
Native coal			65	70			
Pittsburgh Coal			457	462			
Little Dunkard			900	921			
Big Dunkard			980	1023			
Gas Sand			1207	1223	gas	1208	
Total depth				1223			



6-1950

