

39°35'00"

Latitude

80°20'00"

Longitude



**Topo Location**

7.5' Loc. \_\_\_\_\_ 15' Loc. \_\_\_\_\_  
 \_\_\_\_\_ (calc.) \_\_\_\_\_

Company \_\_\_\_\_

Farm \_\_\_\_\_

15' Quad \_\_\_\_\_  
(sec.)

7.5' Quad Mannington

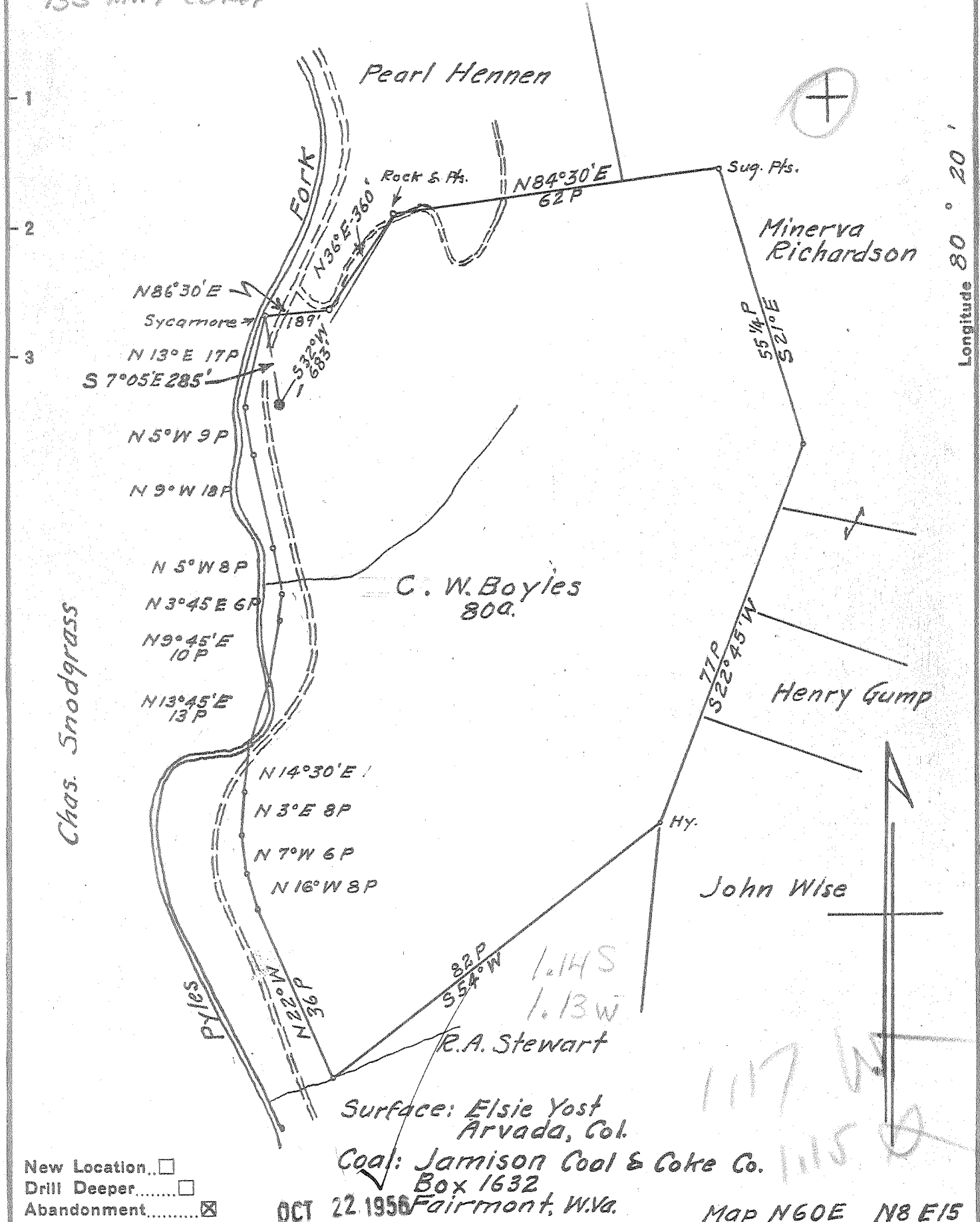
District Mannington

**WELL LOCATION PLAT**

County 049 Permit 30834

Latitude 9° 35'

433 MM7 Co. ROP



New Location...   
 Drill Deeper...   
 Abandonment...

OCT 22 1956

Map N60E N8E15

Company South Penn Natural Gas Co.  
 Address Parkersburg W.Va.  
 Farm C. W. Boyles  
 Tract \_\_\_\_\_ Acres 80a. Lease No. 11837  
 Well (Farm) No. 1 Serial No. \_\_\_\_\_  
 Elevation (Spirit Level) 995.7 Ground  
 Quadrangle Mannington  
 County Marion District Mannington  
 Engineer Wm. A. Hayes  
 Engineer's Registration No. 1429  
 File No. \_\_\_\_\_ Drawing No. \_\_\_\_\_  
 Date Sept. 27, 1956 Scale 1" = 400'

STATE OF WEST VIRGINIA  
 DEPARTMENT OF MINES  
 OIL AND GAS DIVISION  
 CHARLESTON

WELL LOCATION MAP  
 FILE NO. MAR-834-A

+ Denotes location of well on United States Topographic Maps, scale 1 to 62,500, latitude and longitude lines being represented by border lines as shown.

- Denotes one inch spaces on border line of original tracing.

C.W. BOYLES No. 1 - SOUTH PENN. N.G. Co. - MAR-834-A



916

STATE OF WEST VIRGINIA  
DEPARTMENT OF MINES  
OIL AND GAS DIVISION

*Mannington*  
Permit No. 834A

WELL RECORD

Oil or Gas Well Oil  
(KIND)

Company South Penn Natural Gas Company  
 Address P. O. Box 1280, Parkersburg, W. Va.  
 Farm C. W. Boyles Acres 80  
 Location (waters) Pyles Fork  
 Well No. 1 Elev. 995.7  
 District Mannington County Marion  
 The surface of tract is owned in fee by Elsie Yost  
RFD 2, Box 158-A Address Arvada, Colorado  
 Mineral rights are owned by Elsie Yost  
RFD 2, Box 158-A Address Arvada, Colorado  
 Drilling commenced 3-11-94  
 Drilling completed 5-18-94  
 Date Shot 1 1/2 qts. From \_\_\_\_\_ To \_\_\_\_\_  
 With \_\_\_\_\_  
 Open Flow \_\_\_\_\_ /10ths Water in \_\_\_\_\_ Inch  
 \_\_\_\_\_ /10ths Merc. in \_\_\_\_\_ Inch  
 Volume \_\_\_\_\_ Cu. Ft.  
 Rock Pressure \_\_\_\_\_ lbs. \_\_\_\_\_ hrs.  
 Oil \_\_\_\_\_ bbls., 1st 24 hrs.  
 Fresh water \_\_\_\_\_ feet \_\_\_\_\_ feet  
 Salt water \_\_\_\_\_ feet \_\_\_\_\_ feet

Casing and Tubing	Used in Drilling	Left in Well	Packers
Size			Kind of Packer
16			
13	248	248	
10	1137	1137	Size of
8 1/4	1736	1736	
6 1/2			Depth set
5 3/16			
3			Perf. top
2			Perf. bottom
Liners Used			Perf. top
			Perf. bottom

CASING CEMENTED \_\_\_\_\_ SIZE \_\_\_\_\_ No. Ft. \_\_\_\_\_ Date \_\_\_\_\_

COAL WAS ENCOUNTERED AT 617 FEET 120 INCHES  
 \_\_\_\_\_ FEET \_\_\_\_\_ INCHES \_\_\_\_\_ FEET \_\_\_\_\_ INCHES  
 \_\_\_\_\_ FEET \_\_\_\_\_ INCHES \_\_\_\_\_ FEET \_\_\_\_\_ INCHES

Formation	Color	Hard or Soft	Top	Bottom	Oil, Gas or Water	Depth Found	Remarks
Conductor				17			
Pittsburgh Coal			617	627			
Bankard			1137				
Big Injun			1930	2056	Gas & Oil	2040	
Antz			2500	2570			
Fifty Foot			2580	2600	Gas	2580	
Thirty Foot			2707	2737			
Tray			2779	2813			
Gordon			2815	2842	1st Pay	2831	
Total Depth				2899			

MAR 28 1957

