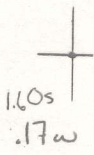


Latitude

  
 Longitude

Topo Location

7.5' Loc. \_\_\_\_\_ 15' Loc. \_\_\_\_\_  
 \_\_\_\_\_ (calc.) \_\_\_\_\_

Company \_\_\_\_\_

Farm \_\_\_\_\_

15' Quad \_\_\_\_\_  
(sec.)

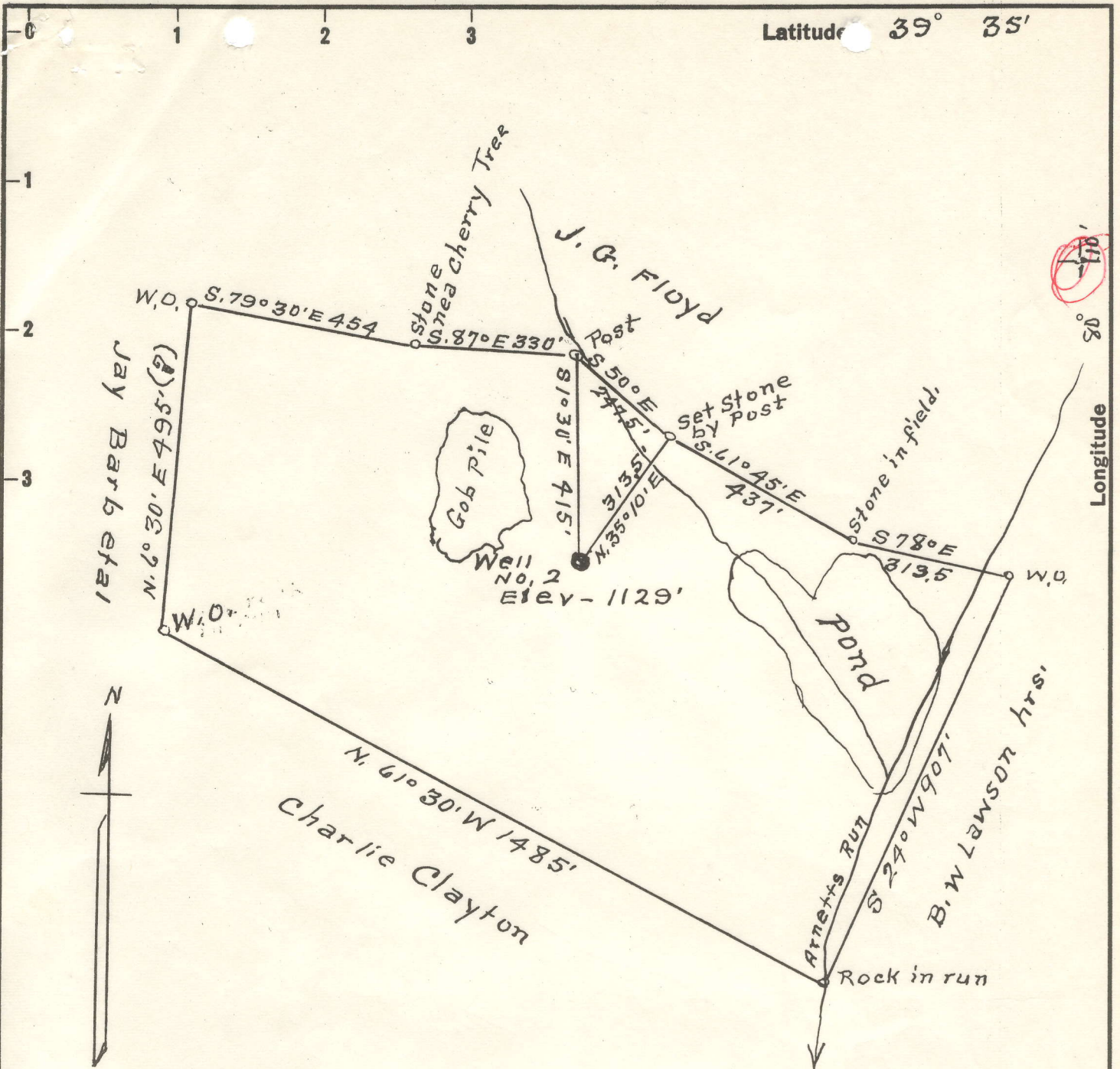
7.5' Quad Grant Town

District Paw Paw

WELL LOCATION PLAT

County 049 Permit 30885

Latitude 39° 35'



Surface & Coal.  
 Eastern Gas & Fuel Associates  
 Grant TOWN  
 MAY 31 1960 W.Va.

0.2 W  
 1.7 Q

New Location   
 Drill Deeper   
 Abandonment

Company Lawrence Snider  
 Address Hundred W.Va.  
 Farm Robert C. Brock et ux  
 Tract 1 Acres 34 1/2 Lease No. \_\_\_\_\_  
 Well (Farm) No. 2 Serial No. \_\_\_\_\_  
 Elevation (Spirit Level) 1129'  
 Quadrangle Blacksville W.Va.  
 County Marion District Paw Paw  
 Engineer A. L. Headley  
 Engineer's Registration No. 2021  
 File No. \_\_\_\_\_ Drawing No. \_\_\_\_\_  
 Date 4-20-60 Scale 1" = 300'

STATE OF WEST VIRGINIA  
 DEPARTMENT OF MINES  
 OIL AND GAS DIVISION  
 CHARLESTON

WELL LOCATION MAP  
 FILE NO. MAR-885-A

+ Denotes location of well on United States Topographic Maps, scale 1 to 62,500, latitude and longitude lines being represented by border lines as shown.

- Denotes one inch spaces on border line of original tracing.

GW



936

STATE OF WEST VIRGINIA  
DEPARTMENT OF MINES  
OIL AND GAS DIVISION

Quadrangle Blacksville, W.VA

WELL RECORD

Permit No. 888A Oil or Gas Well Gas  
(KIND)

Company Snyder Well Service  
Address Hundred, W.Va.  
Farm R.C. Brock Acres 34.5  
Location (waters) Paw Paw  
Well No. I Elev. 1129  
District Paw Paw County Marion  
The surface of tract is owned in fee by Eastern Gas & Fuel  
Grant Town Address W.VA.  
Mineral rights are owned by \_\_\_\_\_  
Address \_\_\_\_\_

Casing and Tubing	Used in Drilling	Left in Well	Packers
Size			
16			Kind of Packer
13	16 Ft.	16 Ft.	
10	481'	481'	Size of
8 1/4	1524'	1524'	
6 3/8	1719'	1719'	Depth set
5 3/16			
3			Perf. top
2	Tubin 1890'	Removed	Perf. bottom
Liners Used		Jan. 15th 1930	Perf. top
			Perf. bottom

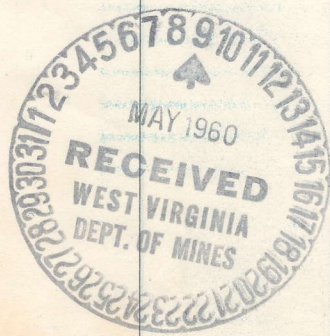
Drilling commenced Dec. 9th 1920  
Drilling completed Mar. 28th 1921  
Date Shot \_\_\_\_\_ From \_\_\_\_\_ To \_\_\_\_\_  
With \_\_\_\_\_  
Open Flow 10/10ths Water in 2 Inch  
\_\_\_\_\_/10ths Merc. in \_\_\_\_\_ Inch  
Volume 170,000 Cu. Ft.  
Rock Pressure \_\_\_\_\_ lbs. \_\_\_\_\_ hrs.  
Oil \_\_\_\_\_ bbls., 1st 24 hrs.  
WELL ACIDIZED \_\_\_\_\_  
WELL FRACTURED \_\_\_\_\_

CASING CEMENTED \_\_\_\_\_ SIZE \_\_\_\_\_ No. Ft. \_\_\_\_\_ Date \_\_\_\_\_

COAL WAS ENCOUNTERED AT \_\_\_\_\_ FEET \_\_\_\_\_ INCHES  
\_\_\_\_\_  
FEET \_\_\_\_\_ INCHES FEET \_\_\_\_\_ INCHES  
\_\_\_\_\_  
FEET \_\_\_\_\_ INCHES FEET \_\_\_\_\_ INCHES

RESULT AFTER TREATMENT \_\_\_\_\_  
ROCK PRESSURE AFTER TREATMENT \_\_\_\_\_  
Fresh Water \_\_\_\_\_ Feet Salt Water \_\_\_\_\_ Feet

Formation	Color	Hard or Soft	Top	Bottom	Oil, Gas or Water	Depth	Remarks
Mapletown Coal			344	348			
Pittsburgh Coal			457	465			
Little Dunkard Sand			840	855			
Big Dunkard Sand			915	950			
Gas Sand			1120	1175			
Gas Sand			1270	1300			
Salt Sand			1340	1530			
Maxon Sand			1540	1580			
Little Lime			1580	1690			
Pencil Cave			1690	1696			
Big Lime			1696	1770			
Big Injun			1770	1915	Gas	1875	
Shale to 1950, from here to Bottom					2998 all water		



APR 6 1962