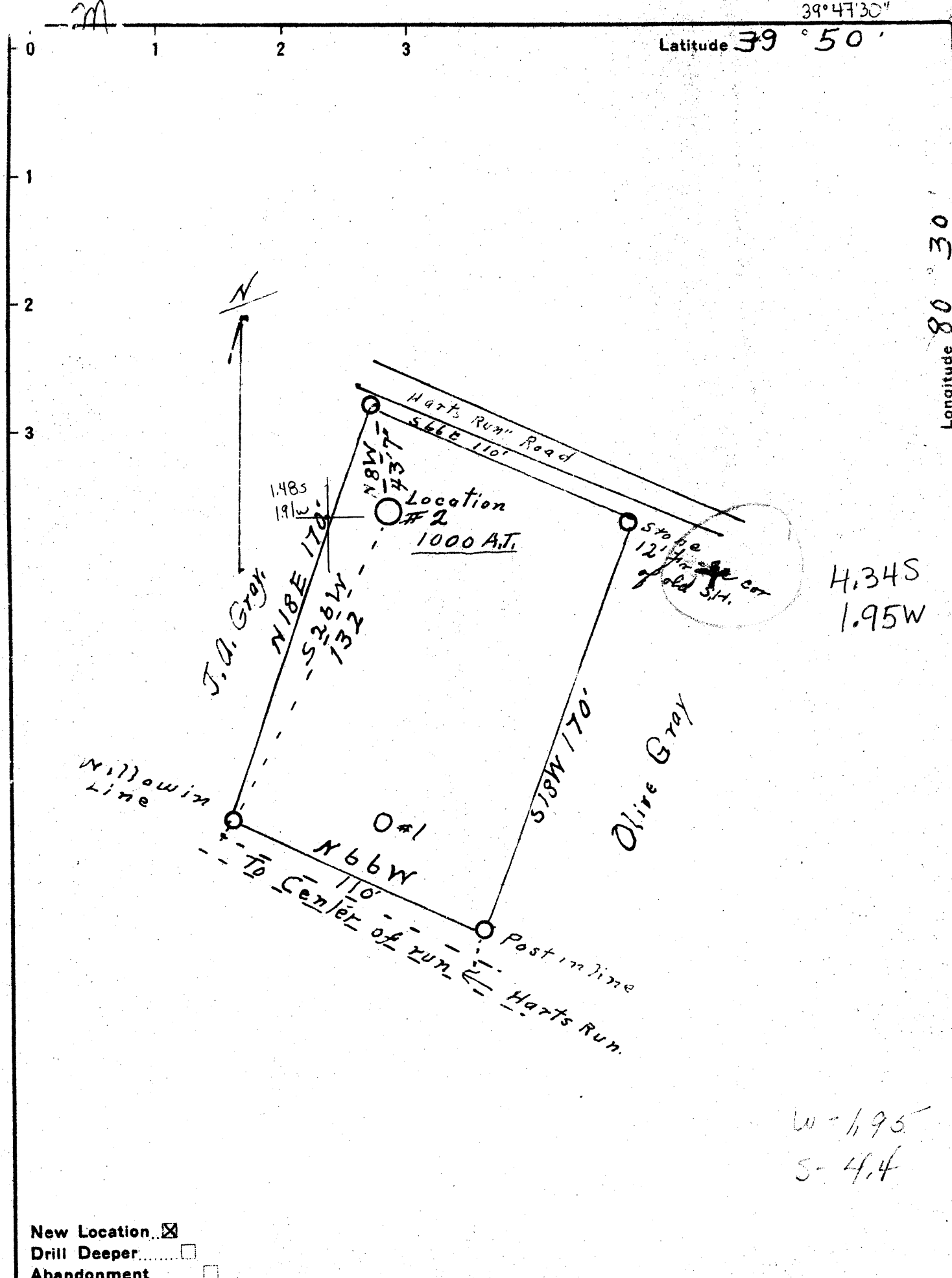


39°47'30"

Latitude 39° 50'

Longitude 80° 30'

80°30'00"



New Location   
 Drill Deeper   
 Abandonment

Company Guy B. & A.G. Patterson  
 Address Cameron, W. Va.  
 Farm Olive Gray,  
 Tract \_\_\_\_\_ Acres 1± Lease No. \_\_\_\_\_  
 Well (Farm) No. 2 Serial No. \_\_\_\_\_  
 Elevation (Spirit Level) 1000'  
 Quadrangle Cameron  
 County Marshall District Liberty  
 Engineer J.W. Parsons  
 Engineer's Registration No. 203  
 File No. O.V.V. Drawing No. \_\_\_\_\_  
 Date 1-8-1941 Scale 1" = 50'

STATE OF WEST VIRGINIA  
 DEPARTMENT OF MINES  
 OIL AND GAS DIVISION  
 CHARLESTON

WELL LOCATION MAP  
 FILE NO. MARS-114

+ Denotes location of well on United States Topographic Maps, scale 1 to 62,500, latitude and longitude lines being represented by border lines as shown.  
 - Denotes one inch spaces on border line of original tracing.

WEST VIRGINIA DEPARTMENT OF MINES  
OIL & GAS DIVISION  
W E L L R E C O R D

Permit No. Mars-114			
Company	Guy D. & A.G.Patterson	Dry Hole	
Address	--	Casing & Tubing	
Farm	Olive Gray Acres 1	10 15	--
Location	North Fork Fish Creek	8 1/2 40	--
Well No	2 Elev.--- 1000	6 5/8 132	--
District	Liberty Marshall County	Coal at 676', 682'	
Surface	Olive Gray		
Mineral	Estate		
Commenced	1-30-41		
Completed	2-6-41		
Flow	10/10ths W in 1/2" plate		
Volume	2000 C.F.		
Rock Pressure	40 lbs. 5 hrs.		
Fresh Water	50' -Hole Full		
Salt Water	Pitts. Coal---water 5 blrs.pr.hr.		

Sand	D	S		15	
Limestone	W	H	15	24	
Clay	W	S	24	30	
Lime-Gritty	W	H	30	45	
Slate	D	S	45	50-Water 50 Hole Full	
Lime	W	H	50	55	
Red Rock		S	55	75	
Lime	W	H	75	90	
Slate	D	S	90	105	
Lime	W	H	105	120	
Red Rock	R	S	120	130	
Lime	W	H	130	136	
Red Rock	R	S	136	145	
Sand	W	S	145	190	
Lime	W	H	190	346	
Bluff Sand	W	M	346	375	
Waynesburgh Coal	D	S	375	380-show gas 377	
Lime	W	H	380	410	
Slate	D	S	410	460	
Lime	W	H	460	510	
Slate	D	S	510	550	
Lime	W	H	550	565	
Lime	W	S	565	600	
Slate	D	S	600	635	
Lime	W	H	635	676	
Pitts. Coal	D	S	676	682 Show Gas 679 -Water 5 blrs. pr.hr.	
Lime	D	H	682	685	
TOTAL DEPTH				685	