

39°50'00"

Latitude 39 50

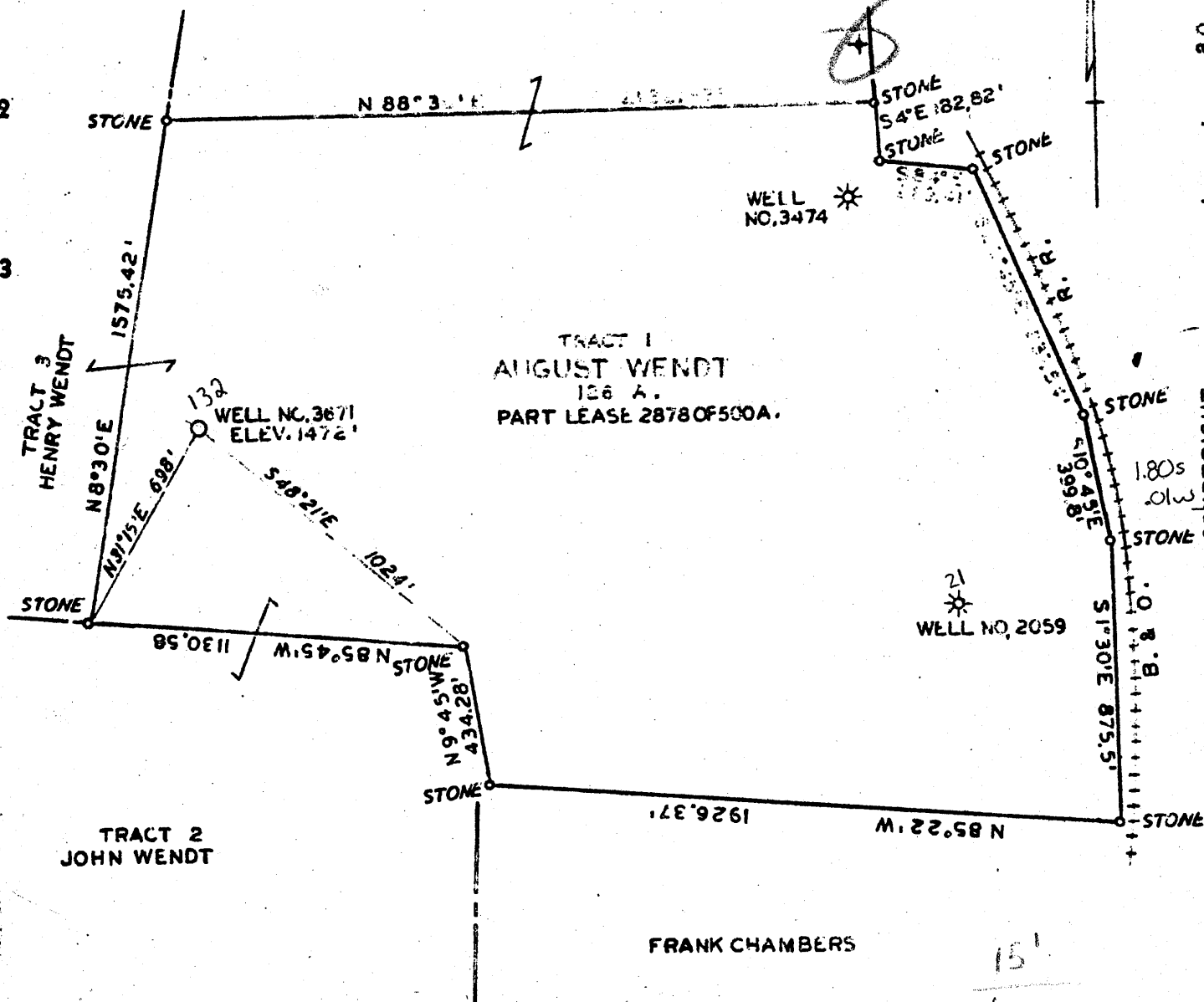
Longitude 80 32 30"

TRACT 4  
GEORGE WENDT

TRACT 1  
AUGUST WENDT  
126 A.  
PART LEASE 2878 OF 500A.

TRACT 2  
JOHN WENDT

TRACT 3  
HENRY WENDT



COAL OWNED BY GEO. E. RICE  
WAYNESBURG, PA.

New Location ::

Drill Deeper .....

Abandonment .....

Company THE MANUFACTURERS LIGHT & HEAT CO.  
 Address 800 UNION TRUST BLDG. PITTSBURGH, PA.  
 Farm AUGUST WENDT  
 Tract 1 Acres 126 - PART Lease No. 2878-500 A.  
 Well (Farm) No. 7 Serial No. 3671  
 Elevation (Spirit Level) 1472'  
 Quadrangle CAMERON S. E.  
 County MARSHALL District LIBERTY  
 Engineer [Signature]  
 Engineer's Registration No. \_\_\_\_\_  
 File No. \_\_\_\_\_ Drawing No. Y-10 740  
 Date JULY 6, 1942. Scale 1" = 500'

FRANK CHAMBERS

15'  
1.778  
2.214

*Added April 47*

180 S  
2.23 W

STATE OF WEST VIRGINIA  
 DEPARTMENT OF MINES  
 OIL AND GAS DIVISION  
 CHARLESTON

WELL LOCATION MAP

File No. MA RS - 132

+ Denotes location of well on United States Topographic Maps, scale 1 to 62,500, latitude and longitude lines being represented by border lines as shown.

— Denotes one inch spaces on border line of original tracing.

6-0-24

WEST VIRGINIA DEPARTMENT OF MINES  
OIL & GAS DIVISION  
W E L L R E C O R D

Permit No. Mars 132  
Cameron Quad . S.E.

Dry Hole  
CASING & TUBING

Company	The Mfrs. Light & Heat Company		
Address	800 Union Trust Bldg., Pittsburgh, Pa.	10	311'
Farm	August Wendt Acres 500	8 1/2	1624'8"
Location	--	6 5/8	2243'7"
Well No	7- 3671	Elev. 1472'	
District	<del>Liberty</del> Marshall County		Coal at 751' 12";
Surface	Henry Wendt, Cameron, W.Va.		810' 12"; 992' 24";
Mineral	The Mfrs. L & H. Co. 800 Union Trust Bldg.,		1104' 72"
	Pittsburgh, Pa.		
Commenced	9-7-42		
Completed	10-16-42		
Open Flow	56/10ths W in 1" <i>79 HCF</i>		

Clay, Rock, Slate, Shale	0	195
Sand	195	215
Slate (little Rock & Lime)	215	515
Sand	515	534
Lime, Slate, Red Rock	534	575
Slate	575	665
Lime & Slate	665	751
✓ Coal	751	752
Lime	752	770
Sand	770	810
✓ Waynesburg Coal	810	811
Lime	811	840
slate	840	868
Lime	868	992
✓ Coal	992	994
Slate & Lime	994	1104
✓ Pittsburgh Coal	1104	1110
Slate & Lime	1110	1160
Sand	1160	1180
Slate & Lime	1180	1200
Sand	1200	1228
Rock, Slate, Lime	1228	1490
✓ Little Dunkard	1490	1500
Slate ( with little Lime)	1500	1725
Sand	1725	1795
Slate	1795	1900
✓ Salt Sand	1900	2000
Slate	2000	2055
Sand	2055	2134
Slate	2134	2180
Sand	2180	2195
Lime, Slate, Red Rock	2195	2267
✓ Big Injun	2267	2528
Slate & Shells	2528	2635
Lime Shells	2635	2700
Slate & Shells	2700	2865
Lime Shells	2865	2976
Pink Rock	2976	2996
Slate & Shells	2996	3060
✓ 50' Sand	3060	3115
Slate	3115	3130
✓ Gordon Stray	3130	3160
Slate	3160	3162
✓ Gordon	3162	3170
Slate	3170	3289 1/2
Total Depth		3289 1/2

*2227  
1472  
795*

*1472*

Gas at 2122-2127

*2195  
1472  
723*

*2195  
1472  
795*

*2267  
1472  
795*

WELL TO BE PLUGGED TO SALT SAND\* WILL OPERATE. FROM THERE.